

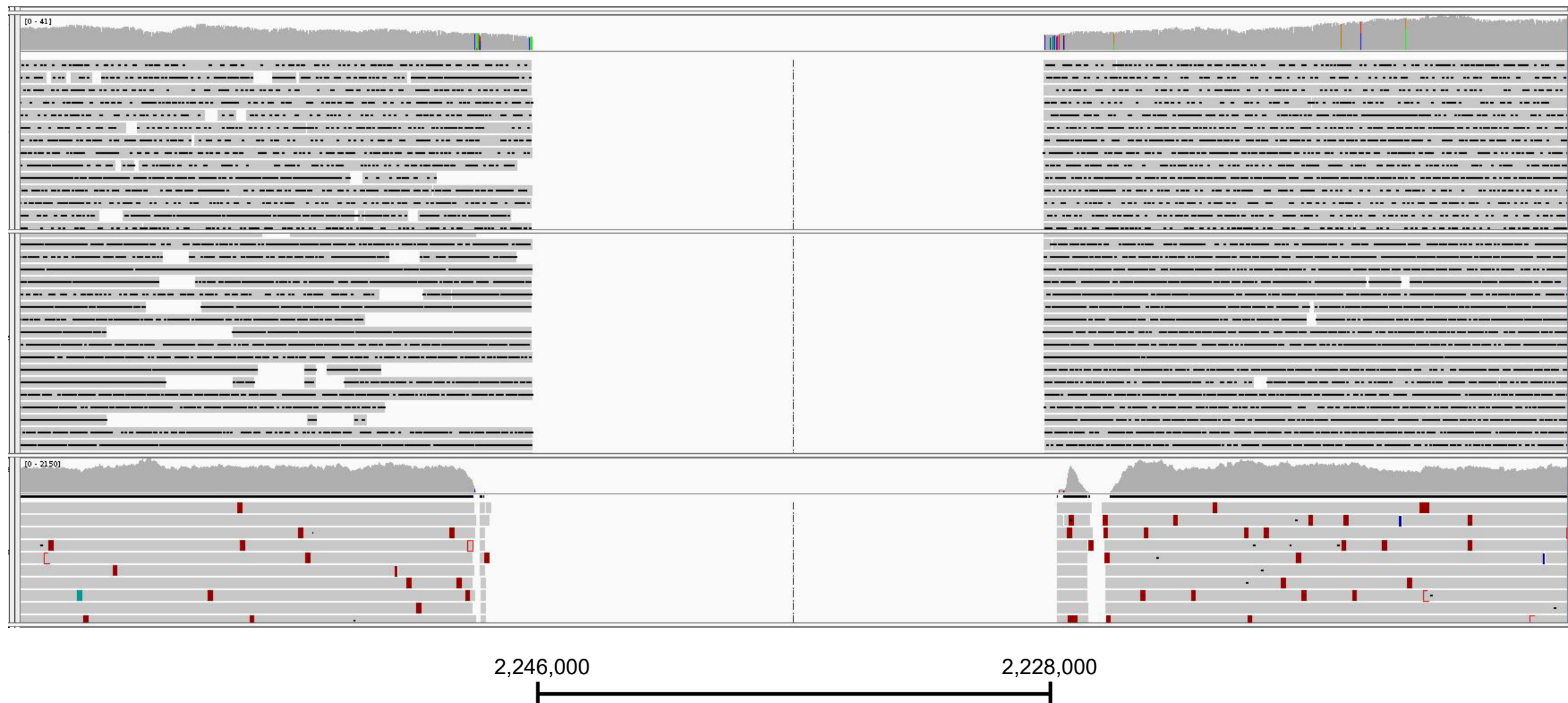
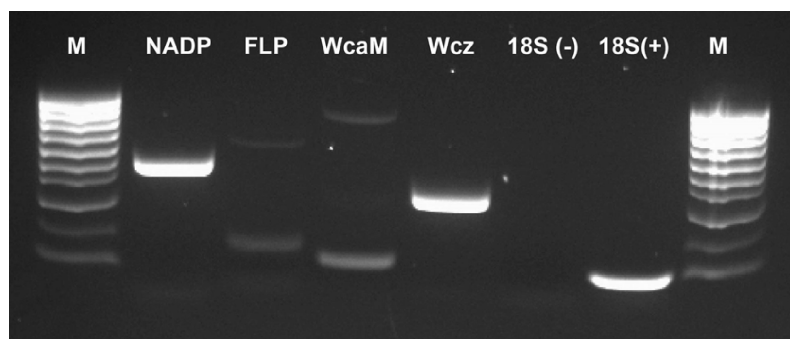
**A**

ONT RAPID

PB CLR

Illumina

FM180568.1

**B****Figure S2. Validation of a deletion region in *E. coli*.**

**A.** ONT RAPID, PacBio Sequel II, and Illumina reads were mapped to a previously reported *E. coli* E2348/69 genome assembly (Genbank GCA\_000026545.1). Mapped reads were visualized in IGV. Reads did not map to a ~18 kbp region in the genome sequence (Genbank FM180568.1, shown here reverse complemented and rotated) and this region was not present in any *de novo* assembly performed in this study. **B.** Agarose gel electrophoresis of gene sequences in *E. coli* E2348/69. Primers were designed for the following sequences: NADP: NADP-dependent phosphogluconate dehydrogenase (WP\_000043439.1) FLP: M-antigen undecaprenyl disphosphate flippase (WP\_000058470.1), WcaM: colanic acid biosynthesis protein WcaM (WP\_001115987.1), Wcz: tyrosine-protein kinase Wzc (WP\_000137154.1), 18S(-): *D. ananassae* 18S rRNA primers with no DNA, 18S(+): *D. ananassae* 18S rRNA primers with fly DNA. M: Marker. The putative ~18 kbp deletion region includes FLP and WcaM while the NADP and Wcz genes on opposite sides of this region are present in *E. coli* assemblies generated in this study.