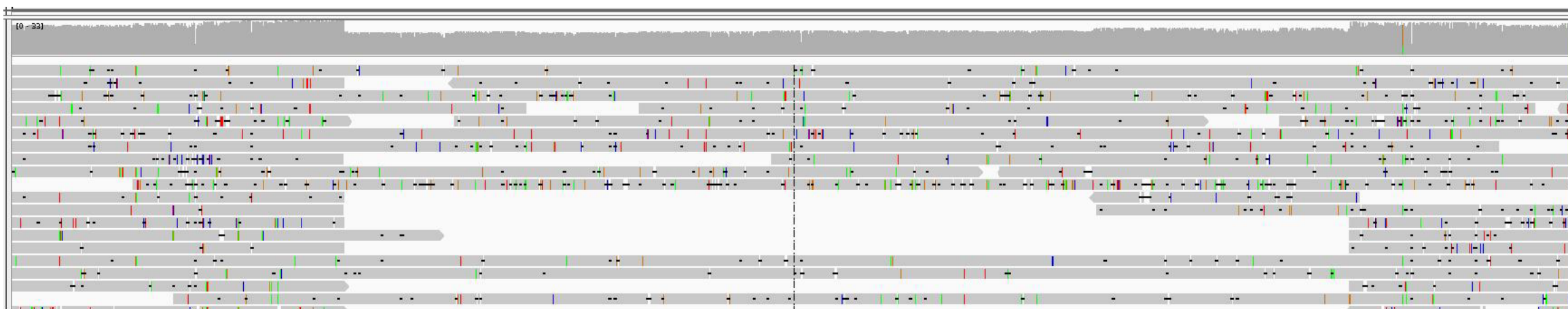
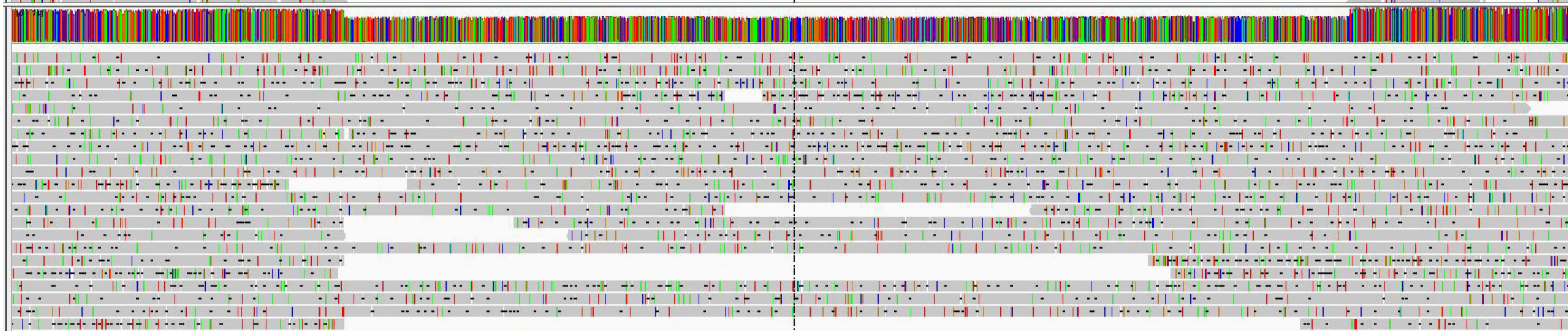


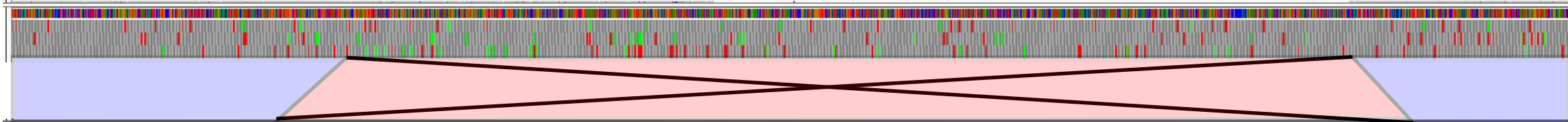
ONT RAPID



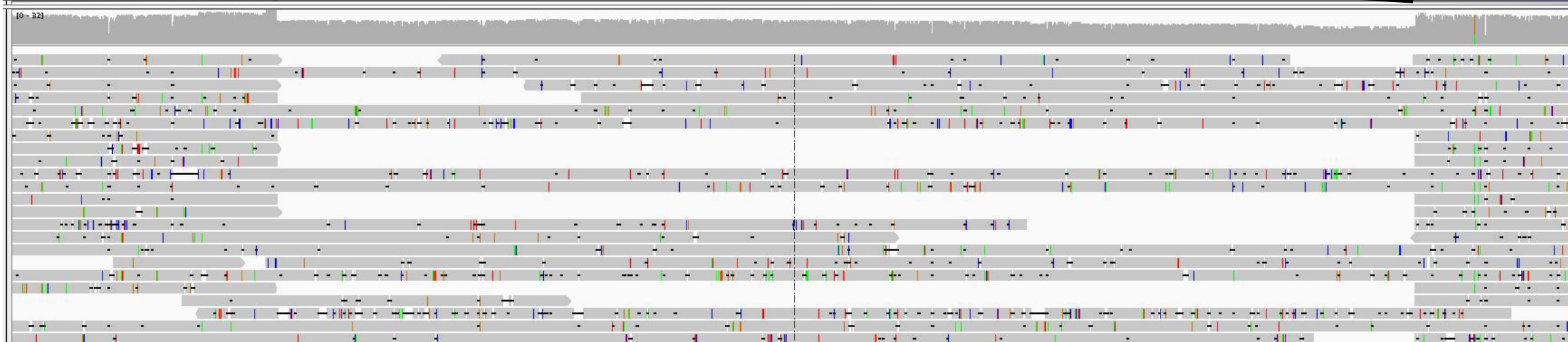
PB CLR



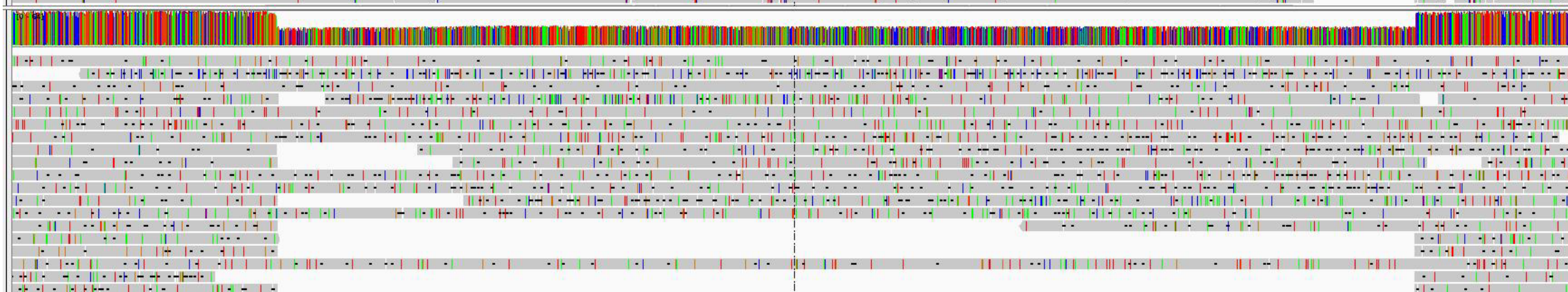
Ecoli.UMIGS



ONT RAPID



PB CLR



Flye CLR

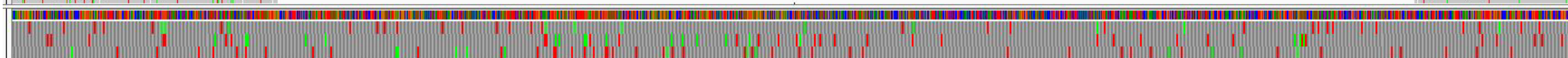


Figure S1. Evidence of long read mapping to *E. coli* inversion region

ONT RAPID and PacBio Sequel II CLR reads were mapped to two assemblies containing an inversion region in the *E. coli* genome. Mapped reads were visualized in IGV. The region highlighted in red corresponds to the ~2 kbp region with an inverted orientation in the Flye PacBio CLR assembly relative to Ecoli.UMIGS. Regions highlighted in blue are syntenic. There were individual ONT and PacBio reads spanning the entire inversion regions in both orientations.