

C. afra genomic synteny with *C. elegans* *let-7* locus

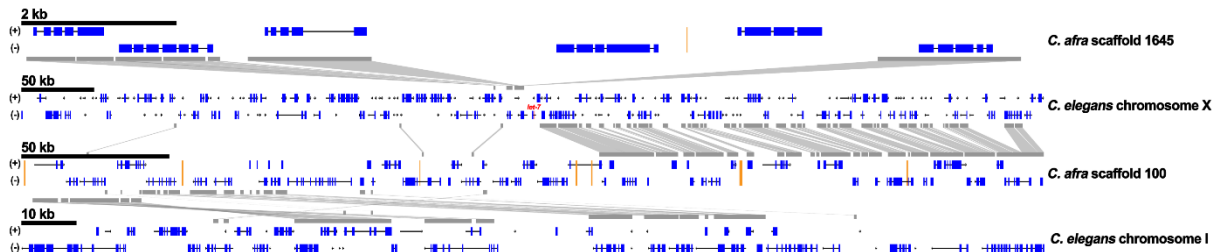


Figure S3 The genomic region containing the *let-7* sequence in *C. elegans* is syntenic to multiple scaffolds in *C. afra*. A portion of *C. elegans* chromosome X that is 3' of the *let-7* sequence (left side of *let-7* in the image) is syntenic to *C. afra* scaffold 1645. A portion of *C. elegans* chromosome X that is 5' of the *let-7* sequence (right side of *let-7* in the image) is syntenic to a portion of *C. afra* scaffold 100. Another portion of *C. afra* scaffold 100 is also syntenic to a portion of *C. elegans* chromosome I. Regions with sequence similarity are outlined in gray. Sequence gaps are shown in orange. *let-7* is shown in red (center of the *C. elegans* chromosome X portion shown).