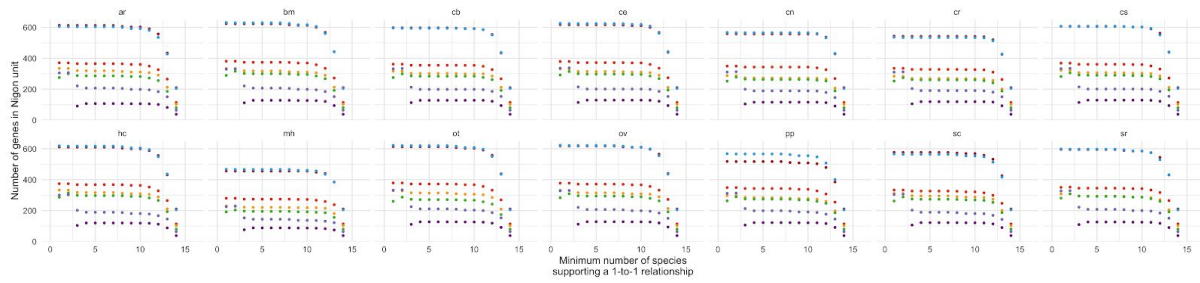
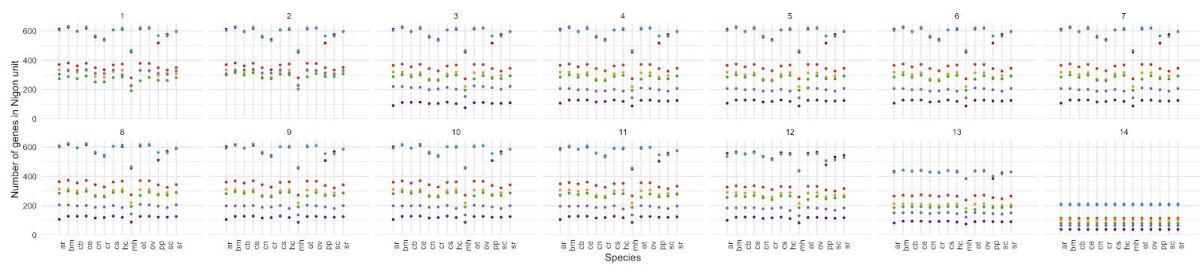


A



B



C



Figure S8. Exploring the robustness of definition of Nigon element-defining sets of orthologues.

A Numbers of orthologous gene sets assigned to each putative Nigon-defining set in analyses using different numbers of species (from 2-14) as the minimum number of species having a 1-to-1 orthologous relationships input to the K-means clustering. Species abbreviations are ar: *Auanema rhodensis*, bm: *Brugia malayi*, cb: *Caenorhabditis briggsae*, ce: *C. elegans*, cn: *C. nigoni*, cr: *C. remanei*, cs: *C. sp34*, hm: *Haemonchus contortus*, mh: *Meloidogyne hapla*, ot: *Oscheius tipulae*, ov: *Onchocerca volvulus*, pp: *Pristionchus pacificus*, sc: *Steinernema carpocapsae* and sr: *Strongyloides ratti*

B Same data as A, grouped by species rather than by minimum number of species having a 1 to 1 orthologous relationship. The number of orthologues assigned is stable in each species between K=3 and K=10.

C Colours used in panels A and B.

