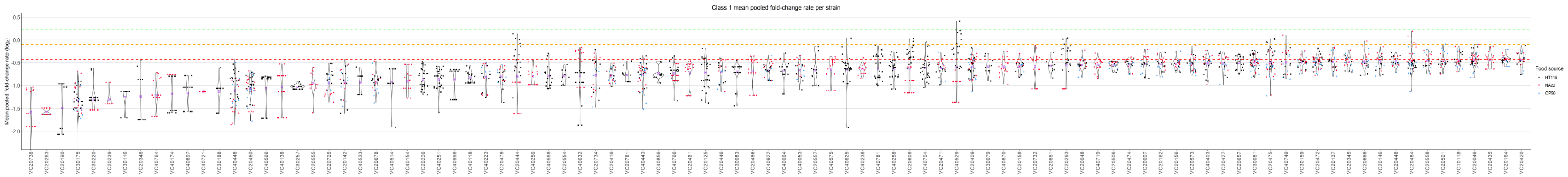
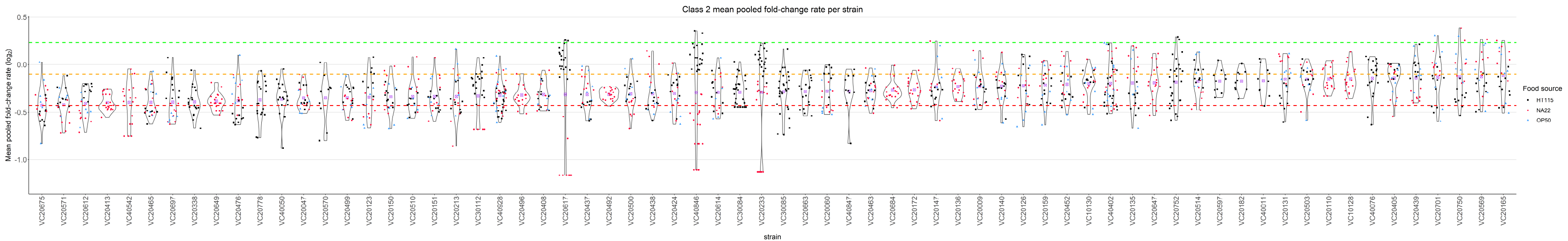


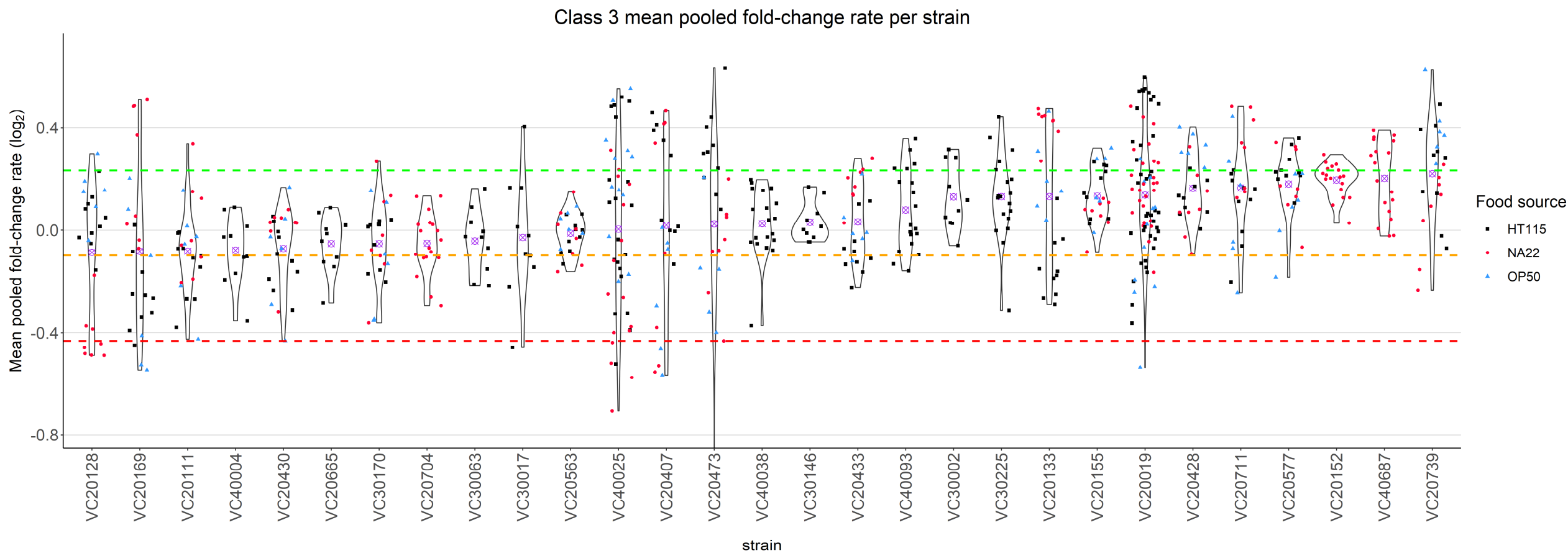
A



B

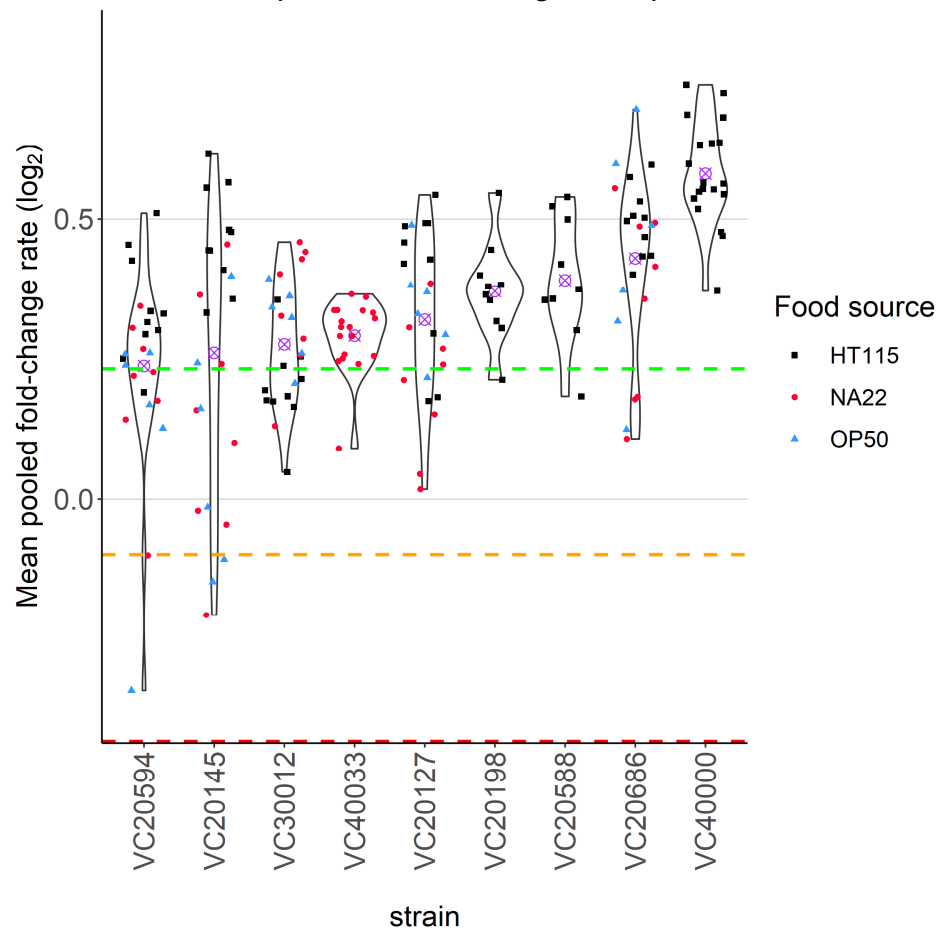


C



D

Class 4 mean pooled fold-change rate per strain



Supplemental Figure S5. PhenoMIP can generate a gradient of fitness phenotypes from severe to subtle. Violin plots of mean fold-change rate per replicate for 202 MMP strains across the 4 defined classes 1 (A), class 2 (B), class 3 (C), and class 4 (D). Each violin plot discriminates between food sources HT115 (black squares), NA22 (red circles) and OP50 (blue triangles). Strains are sorted within class by the mean FCR (\log_2 , purple \otimes) of all replicate conditions for that strain. Coloured dotted lines represent category boundaries using an FCR of -0.4315 (red), -0.0985 (yellow), and 0.2327 (green).