

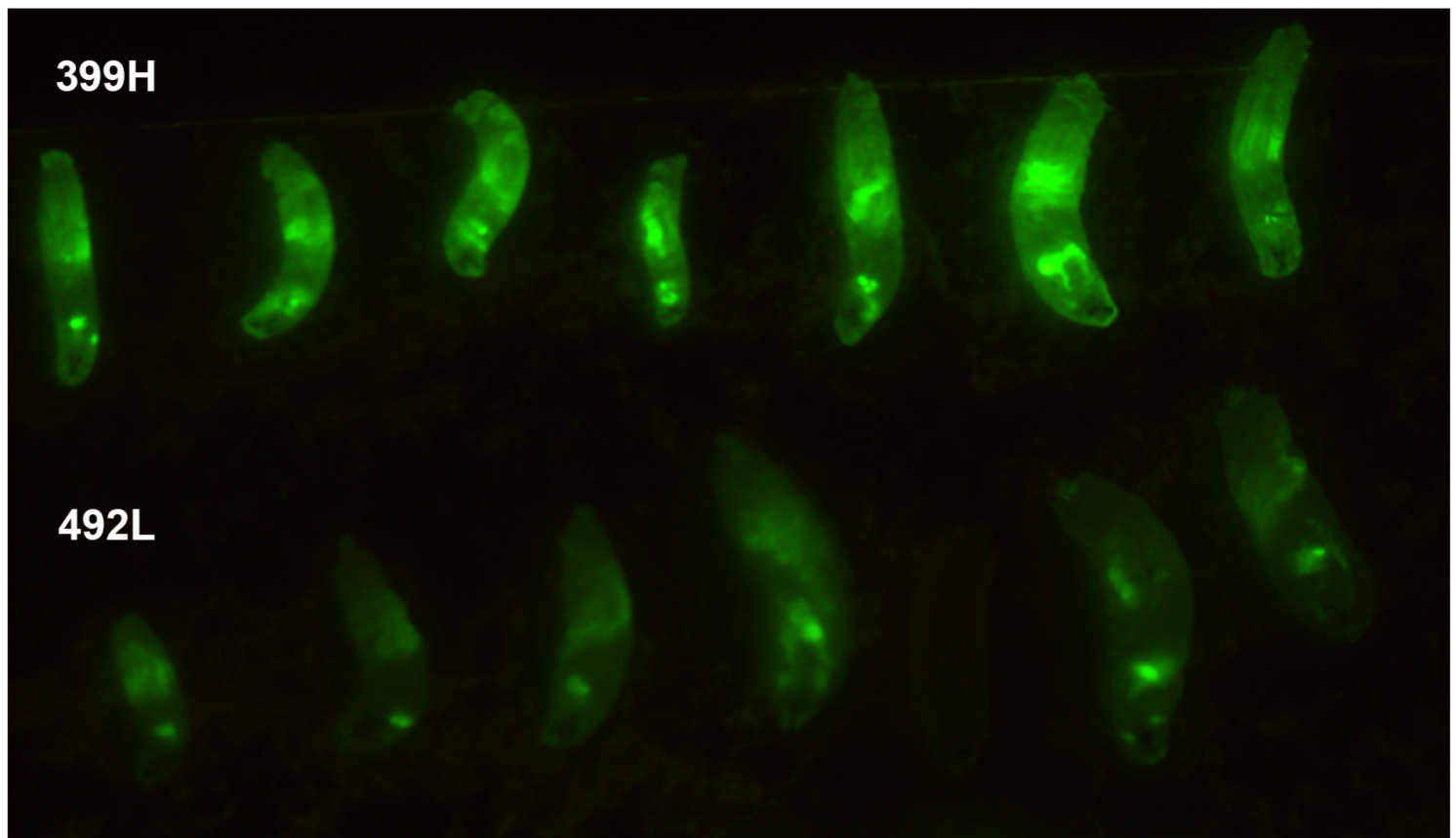
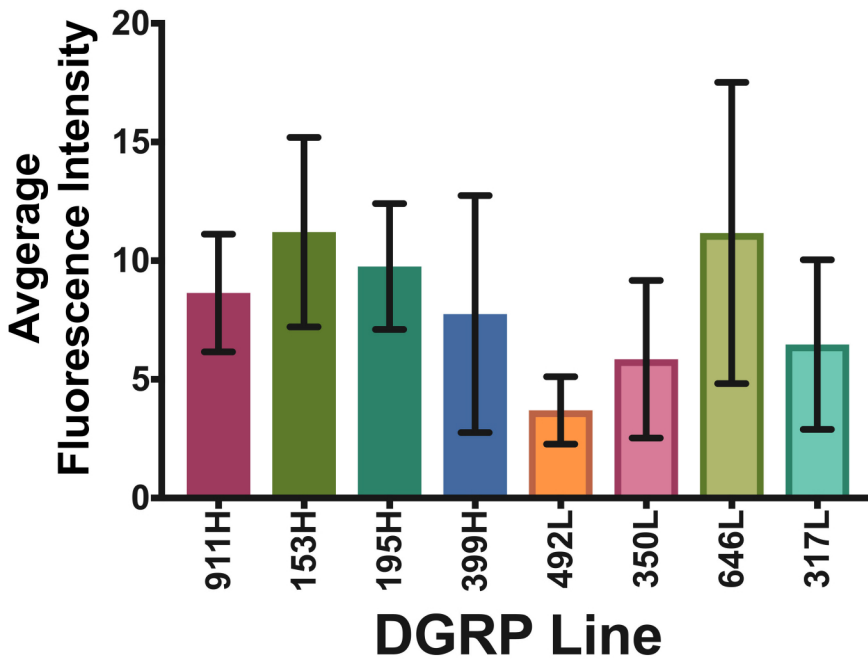
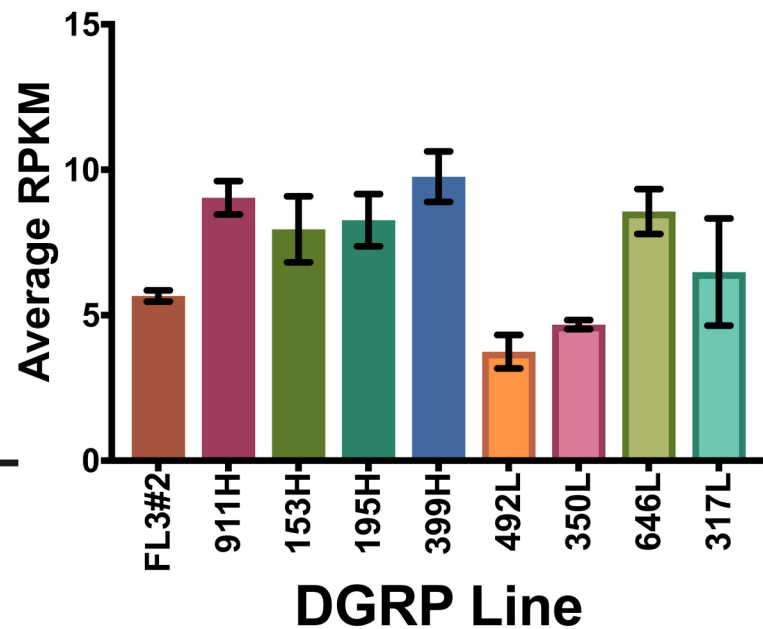
A**B****Larval Fluorescence****C****RNAseq - ZsGreen**

Figure S3. ZsGreen expression in larvae of offspring of FL3#2 crossed with selected DGRP lines. (A) Photograph showing fluorescence of ZsGreen in third instar larvae. Line 399H (top row) showed high female lethality in the experimental crosses, while line 492L (bottom row) showed low female lethality in the experimental crosses. (B) Mean and standard error of fluorescence intensity due to overexpression of the linked ZsGreen marker gene for n replicates where 911H $n = 8$, 153H $n = 8$, 195H $n = 9$, 399H $n = 16$, 492L $n = 13$, 350L $n = 5$, 646L $n = 8$, and 317L $n = 5$. (C) RPKM per line for the ZsGreen marker. Values represented for FL3#2 are half of the actual value seen to account for homozygosity of the FL3#2 line.