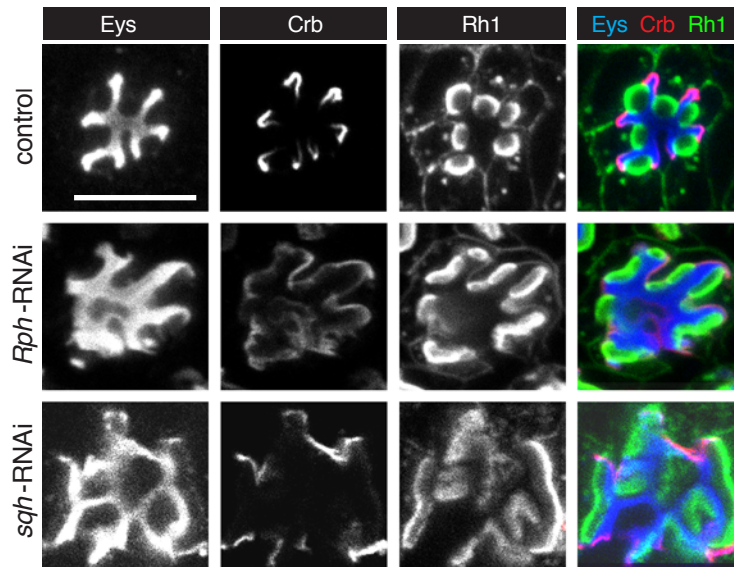


## Laffafian and Tepass, Figure S3



**Figure S3. Genes affecting Crb and Eys trafficking.**

Flies with UAS-RNAi constructs were crossed to UAS-dicer-2; pGMR-Gal4 flies. The retinas of adult progeny were stained for Rh1, Eys, and Crb. UAS-dicer-2/+; pGMR-Gal4/+ was used as a control. **Rph** knockdown resulted in an increase in Eys and the expansion of the IRS and stalk membrane. Rhabdomeres are larger and appear rectangular. RNAi line BDSC 25950 was used.

**Sqh** knockdown led to an increase in Eys and the expansion of the IRS and stalk membrane. Rhabdomeres are larger and appear rectangular. RNAi line BDSC 33892 was used.

Scale bar, 5  $\mu$ m.