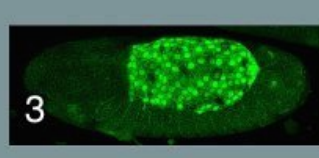
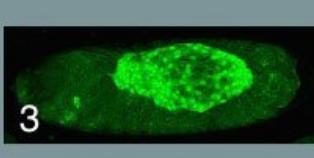
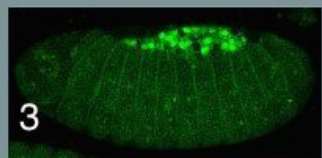
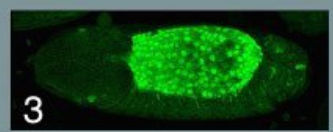
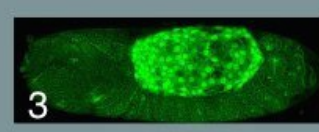
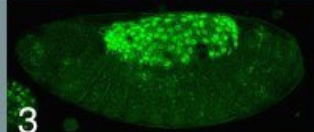
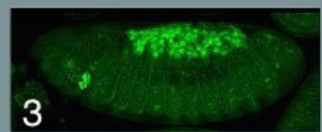
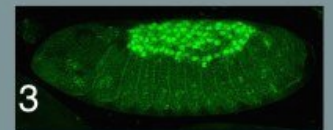
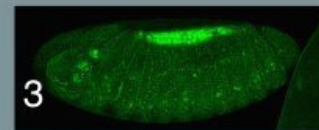
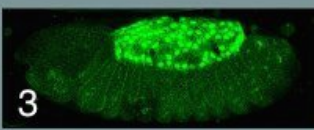
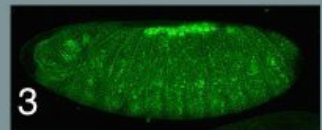
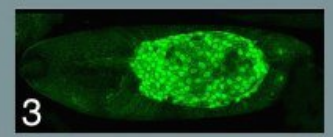
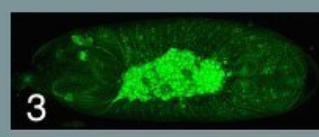
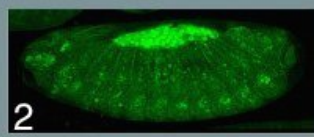
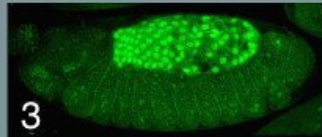
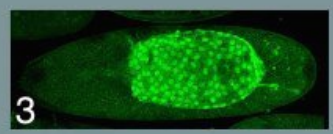
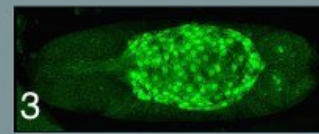
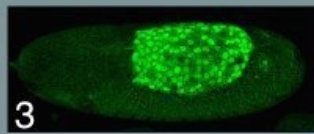
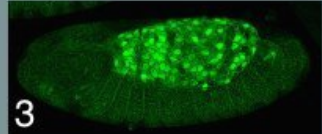
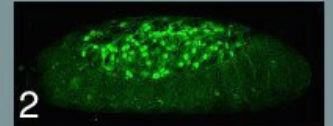
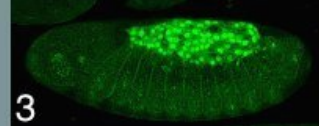
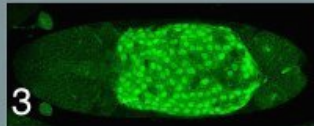
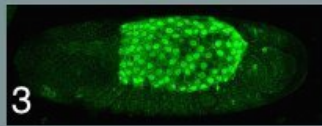
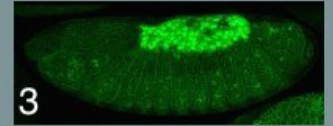
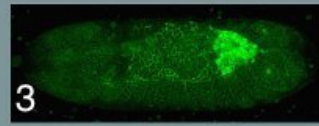
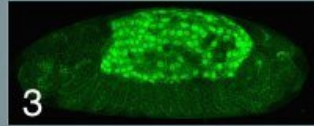
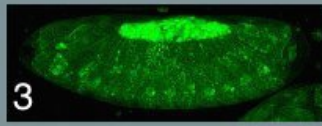


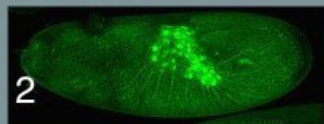
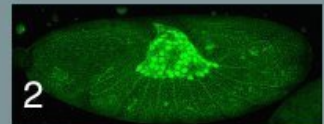
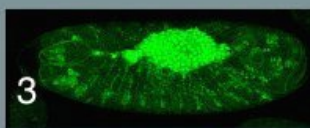
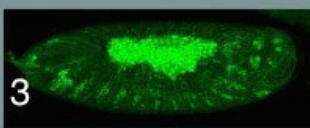
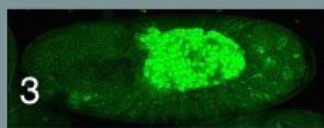
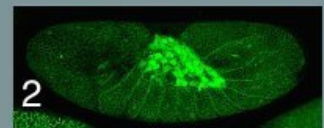
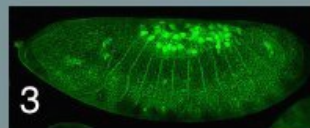
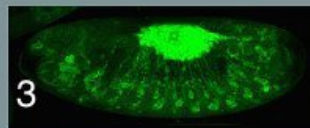
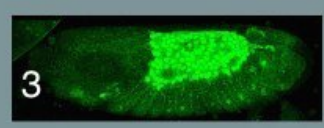
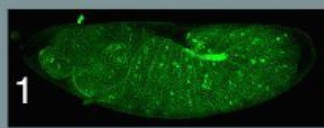
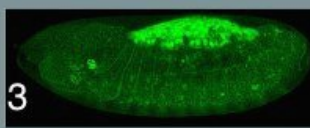
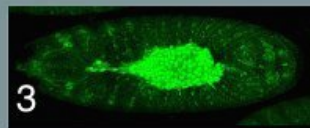
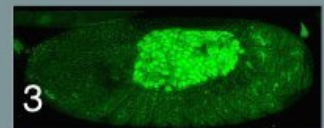
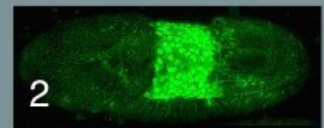
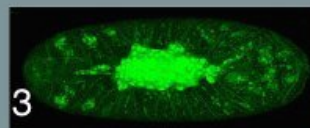
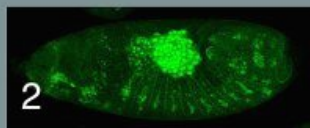
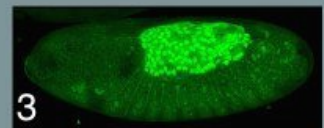
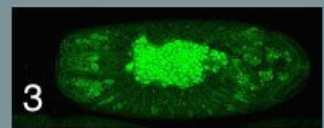
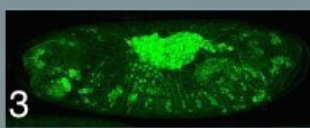
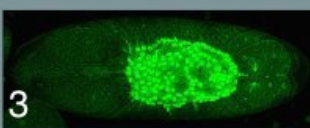
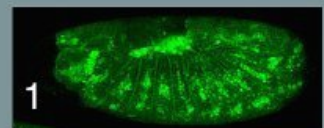
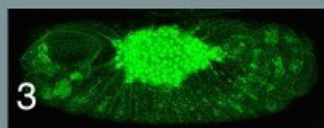
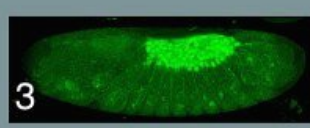
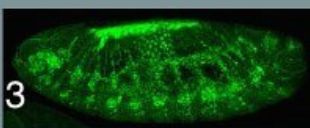
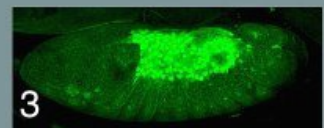
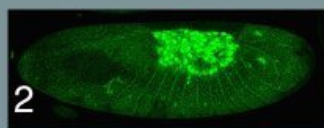
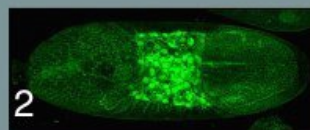
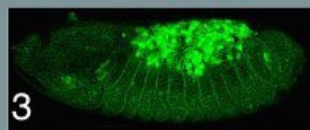
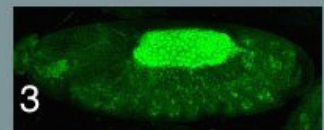
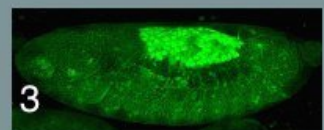
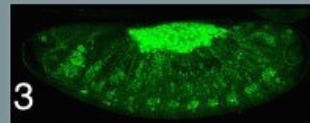
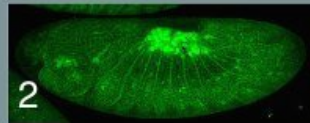
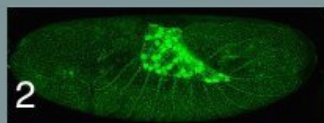
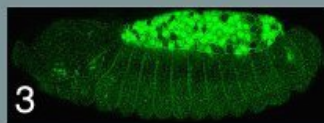
all completed GBR

except this one

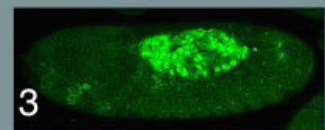
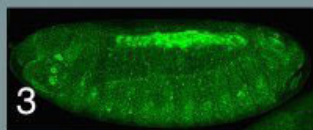
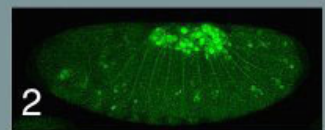
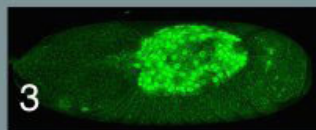
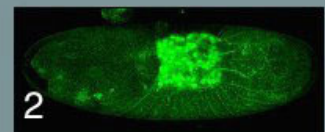
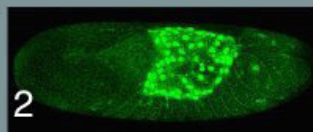
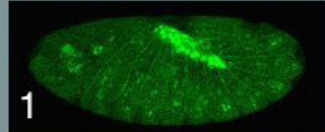
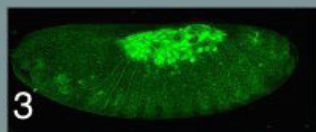
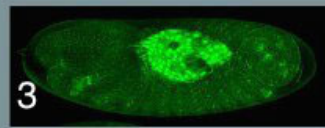
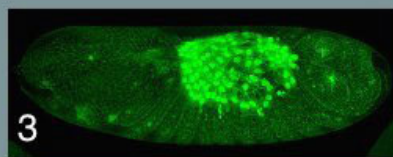
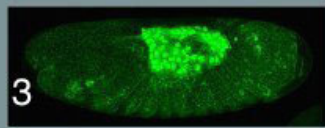
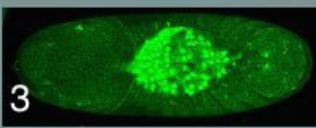
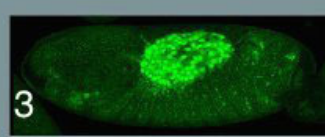
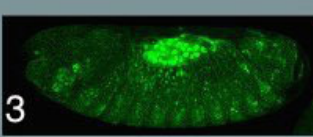
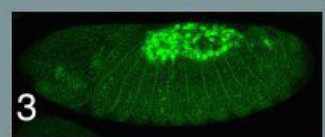
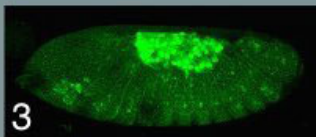
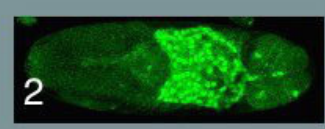
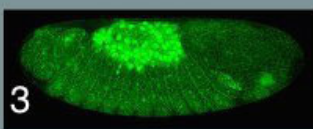
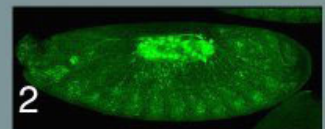
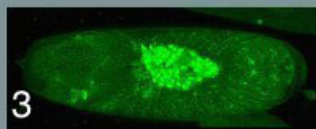
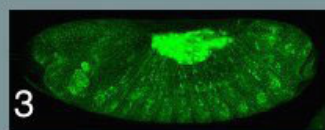
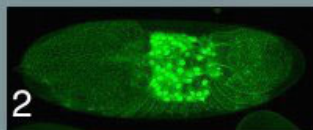
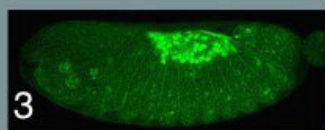
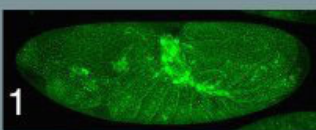
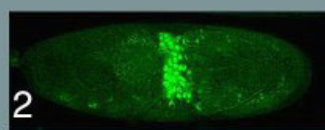
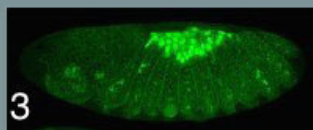
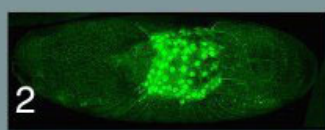
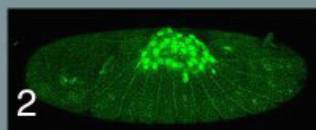
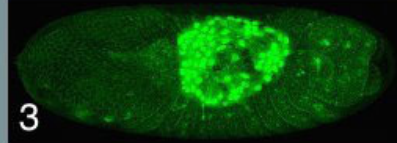
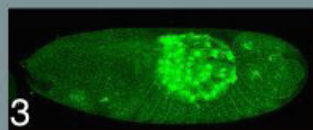
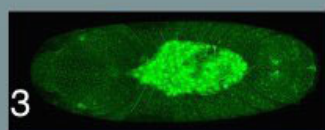
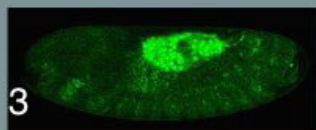
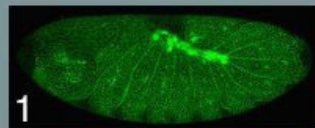
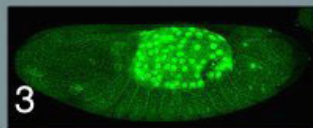
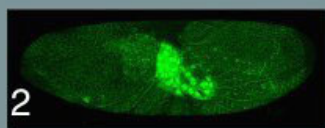
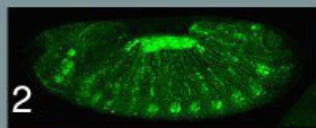
hnt[NP7278ex1]/Y or /hnt[XE81] + pebBAC
control rescue experiment
1 = GBR failure
2 = GBR partial
3 = GBR complete



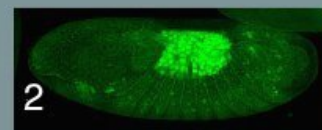
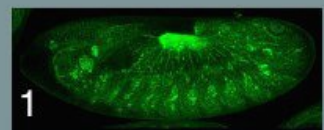
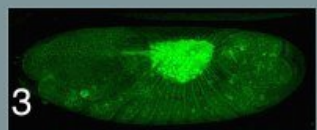
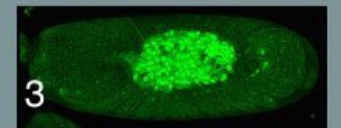
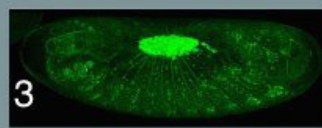
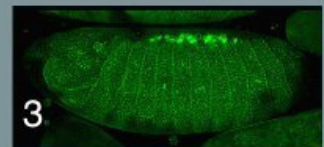
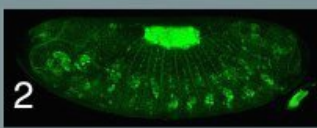
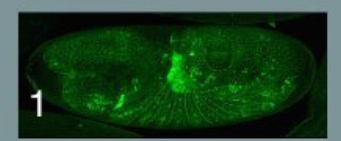
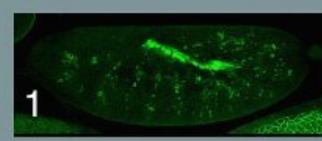
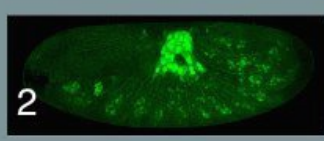
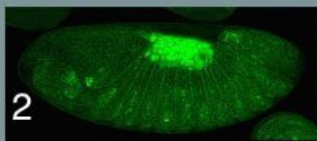
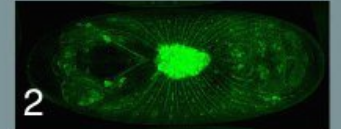
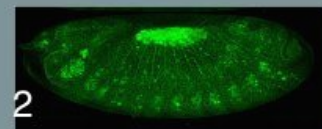
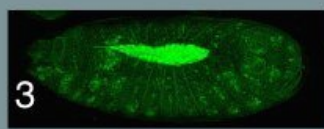
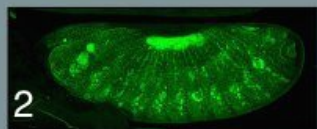
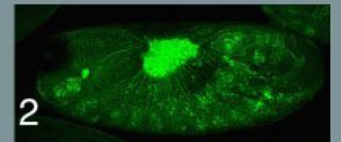
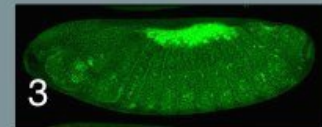
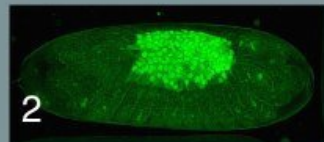
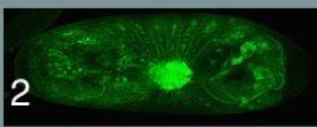
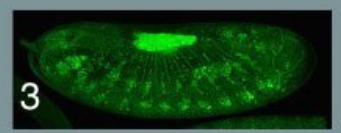
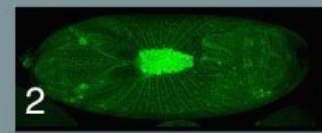
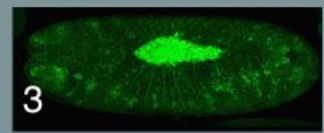
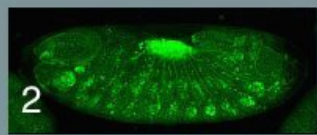
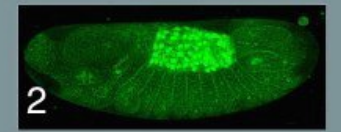
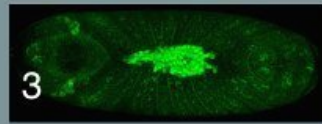
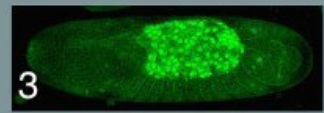
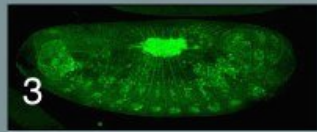
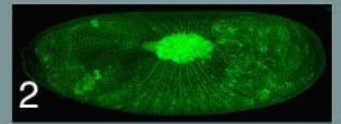
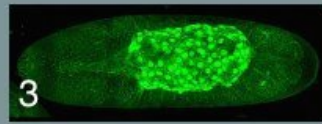
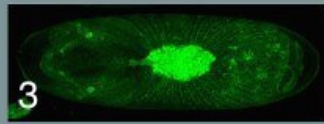
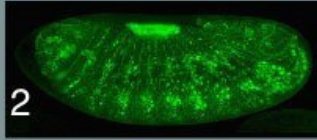
hnt[NP7278ex1] + UAS-sSpi
rescue experiment
1 = GBR failure
2 = GBR partial
3 = GBR complete



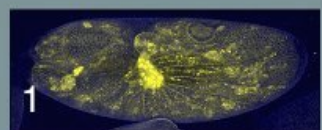
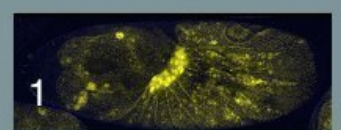
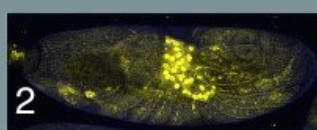
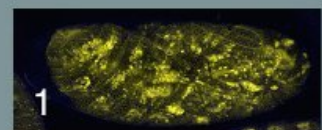
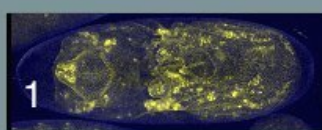
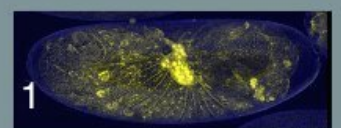
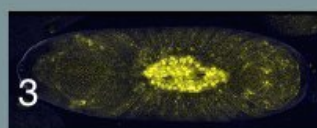
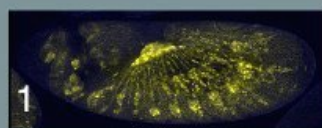
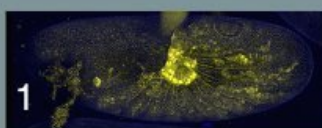
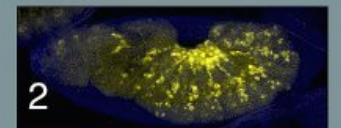
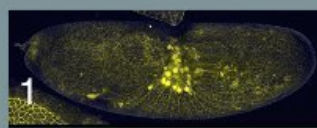
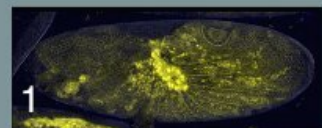
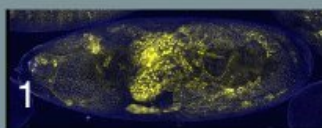
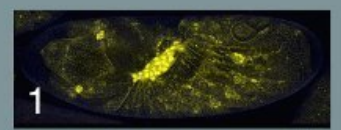
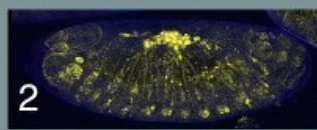
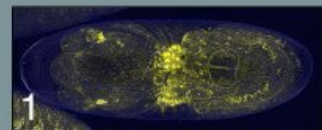
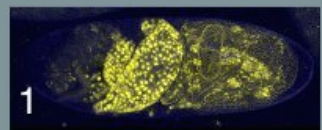
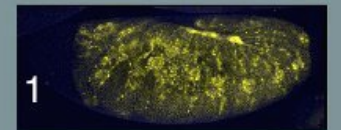
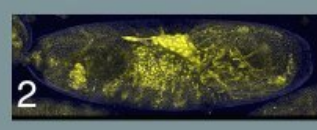
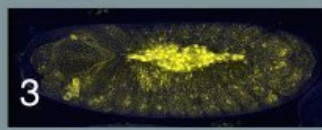
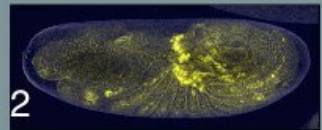
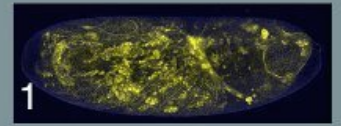
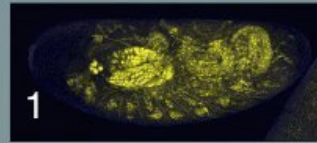
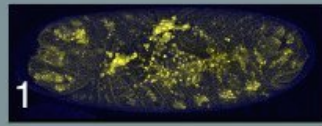
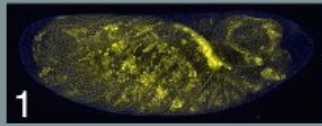
hnt[NP7278ex1] + UAS-p35
 rescue experiment
 1 = GBR failure
 2 = GBR partial
 3 = GBR complete



hnt[NP7278ex1] + UAS-Ras85D[V12]
rescue experiment
1 = GBR failure 2 = GBR partial
3 = GBR complete



hnt[NP7278ex1]
+ UAS-pnt[P1]
rescue experiment
1 = GBR failure
2 = GBR partial
3 = GBR complete



hnt[NP7278ex1] + UAS-pnt[P2]
 rescue experiment
 1 = GBR failure
 2 = GBR partial 3 = GBR complete

Figure S1. Data sets used in *hnt*^{NP7278ex1} rescue experiment .

The above labeled pages present all confocal images that were used to generate the stacked bar graph as presented in Figure 5K. Phenotype scores are present beside each image where 1 = GBR failure; 2 = GBR partial; and 3 = GBR complete.