

Figure S1

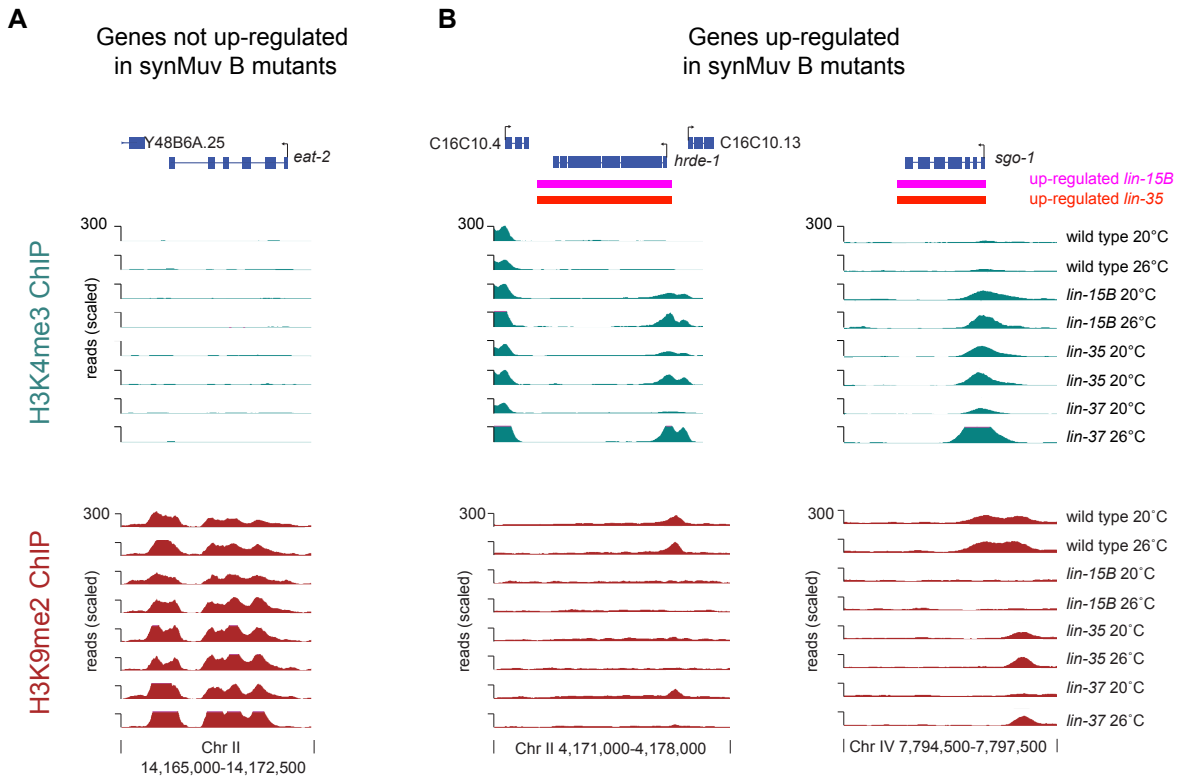


Figure S1: H3K4me3 and H3K9me2 on synMuv B regulated genes. (A, B) H3K4me3 and H3K9me2 ChIP-seq data visualized on the UCSC genome browser at one gene *eat-2* (A) with no change in expression in synMuv B mutants and at two genes *hrde-1* and *sgo-1* (B) that are upregulated in synMuv B mutants. The vertical lines and arrows indicate the location of the transcript start site (TSS) and the direction of transcription. Locations of up-regulation in *lin-15B* (pink) and *lin-35* (red) are shown above the ChIP signals tracks. Signals shown are ChIP-seq reads scaled to 5 million total reads for H3K4me3 and 15 million total reads for H3K9me2 (see Materials and Methods).