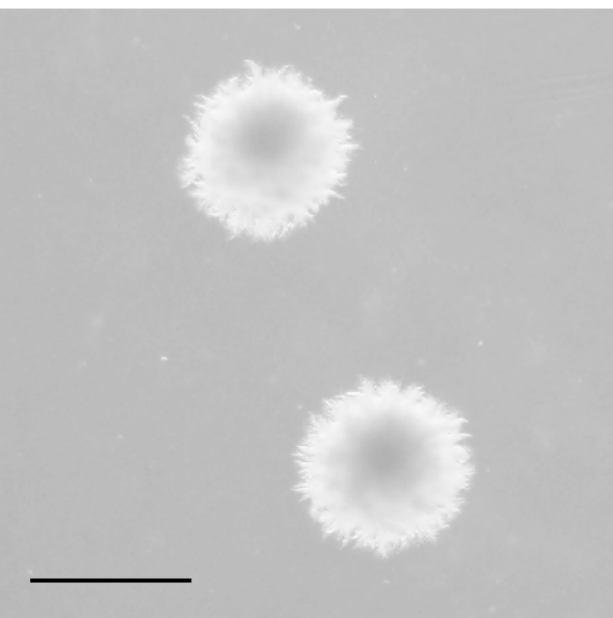


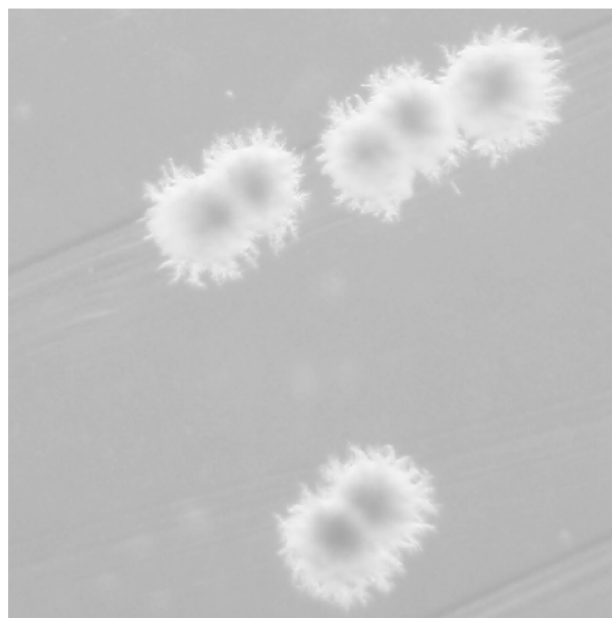
Figure S4: Comparison of psh colonies produced via streaking and pinning for Sigma1278b. A single colony from a YPD plate was streaked onto SLAD, SLAD + PheOH, and SLAD + TrpOH plates, and incubated at 30C for 5 days before imaging; scale bar represent 1 mm. Bottom row contains images of pinned colonies from OmniTrays with the same medium.

Sigma1278b (YJM1290)

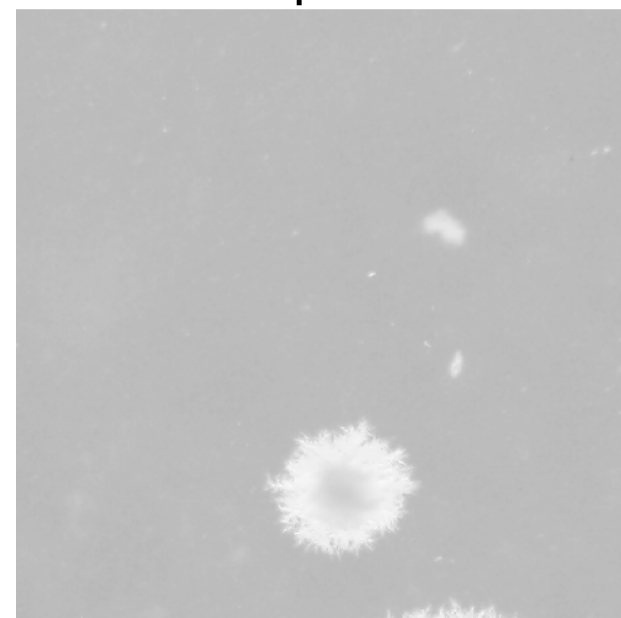
Control



PheOH



TrpOH



streaked colonies



pinned colonies