

Identification of quantitative trait loci for component traits of flowering capacity across temperature in *Petunia*.

### **Supplemental Table and Figures**

QiuXia C. Chen, Yufang Guo, and Ryan M. Warner<sup>1</sup>

Department of Horticulture, Michigan State University, 1066 Bogue Street, East Lansing, MI 48824

<sup>1</sup>Corresponding author. ORCID 0000-0003-1780-0146. Email address: warnerry@msu.edu

Supplementary Table S1. Pearson's correlation coefficients at different air temperature treatments for traits measured in *P. axillaris* × *P. exserta* F<sub>7</sub> recombinant inbred line population in 2014-15 and 2015-16.

Trait <sup>z</sup>	DRate	DTA	FIBud	FIBudLS	FIBudPS	Branch	FIBranch	FIDiam	Nodes	HghtFI	Internode	LLeng
Temperature 14 °C												
DTA	-0.64**											
FIBud	-0.44**	0.62**										
FIBudLS	-0.04	0.07	0.31**									
FIBudPS	-0.48**	0.46**	0.65**	0.57**								
Branch	0.26**	-0.23**	-0.1*	-0.09*	-0.07*							
FIBranch	-0.21**	0.27**	0.45**	-0.09*	0.41**	0.51**						
FIDiam	-0.19**	0.10*	0.31**	0.08	0.18**	-0.18**	-0.06					
Nodes	0.33**	0.11**	0.12**	0.16**	-0.04	0.14**	0.00	-0.02				
HghtFI	0.14**	-0.14**	-0.12**	0.35**	0.06	0.41**	0.05	0.12**	0.29**			
Internode	-0.04	-0.18**	-0.17**	0.25**	0.11**	0.35**	0.08*	0.14**	-0.18**	0.88**		
LLeng	-0.15**	0.03	-0.26**	-0.13*	-0.04	0.07*	-0.01	-0.15**	-0.56**	-0.14**	0.13**	
LWid	-0.11**	-0.06	-0.30**	0.06	-0.03	0.18**	0.04	-0.24**	-0.51**	0.04	0.29**	0.80**
Temperature 17 °C												
DTA	-0.50**											
FIBud	-0.21**	0.64**										
FIBudLS	0.13*	-0.25**	0.31**									
FIBudPS	-0.26**	0.63**	0.77**	0.46**								
Branch	-0.03	0.13**	0.22**	-0.01**	0.22**							
FIBranch	-0.18**	0.50**	0.66**	-0.01	0.60**	0.60**						
FIDiam	-0.12**	0.22**	0.29**	-0.18**	0.19**	-0.06	0.12**					
Nodes	0.35**	0.13**	0.12**	0.05	0.05	0.16**	0.01	0.06				
HghtFI	0.03	-0.02	-0.08*	0.26**	0.01	0.27**	-0.05	0.08*	0.43**			
Internode	-0.18**	-0.08*	-0.13**	0.23**	0.01	0.21**	-0.04	0.06	-0.1*	0.85**		
LLeng	-0.26**	0.11**	-0.22**	-0.24**	-0.02	0.09*	0.00	-0.05	-0.43**	-0.08*	0.16**	
LWid	-0.23**	0.04	-0.27**	-0.08	-0.03	0.18**	0.00	-0.18**	-0.31**	0.06	0.25**	0.77**

Table S1 (cont'd)

	Temperature 20 °C											
DTA	-0.29**											
FIBud	-0.08*	0.66**										
FIBudLS	0.07	-0.13*	0.41**									
FIBudPS	-0.13**	0.64**	0.83**	0.53**								
Branch	0.07*	0.21**	0.36**	0.03	0.26**							
FIBranch	0.01	0.51**	0.75**	0.06	0.65**	0.64**						
FIDiam	-0.07*	0.16**	0.25**	0.06	0.20**	0.00	0.12**					
Nodes	0.30**	0.24**	0.10**	0.13*	-0.05	0.26**	0.05	0.09*				
HghtFI	-0.09*	0.28**	0.23**	0.23**	0.27**	0.35**	0.18**	0.10*	0.41**			
Internode	-0.27**	0.16**	0.19**	0.15**	0.32**	0.21**	0.16**	0.05	-0.17**	0.82**		
LLeng	-0.13**	0.08*	-0.08*	-0.14*	0.06	0.13**	0.05	-0.09*	-0.30**	0.03	0.21**	
LWid	-0.18**	0.16**	0.01	0.02	0.18**	0.19**	0.10**	-0.14**	-0.23**	0.19**	0.33**	0.74**

<sup>z</sup> Trait abbreviations as defined in Table 1.

<sup>y</sup> \* and \*\* indicate significance at  $P < 0.05$  and  $0.001$ , respectively.

Figure S1. Weekly temperature (mean  $\pm$  standard deviation) data for all treatments.

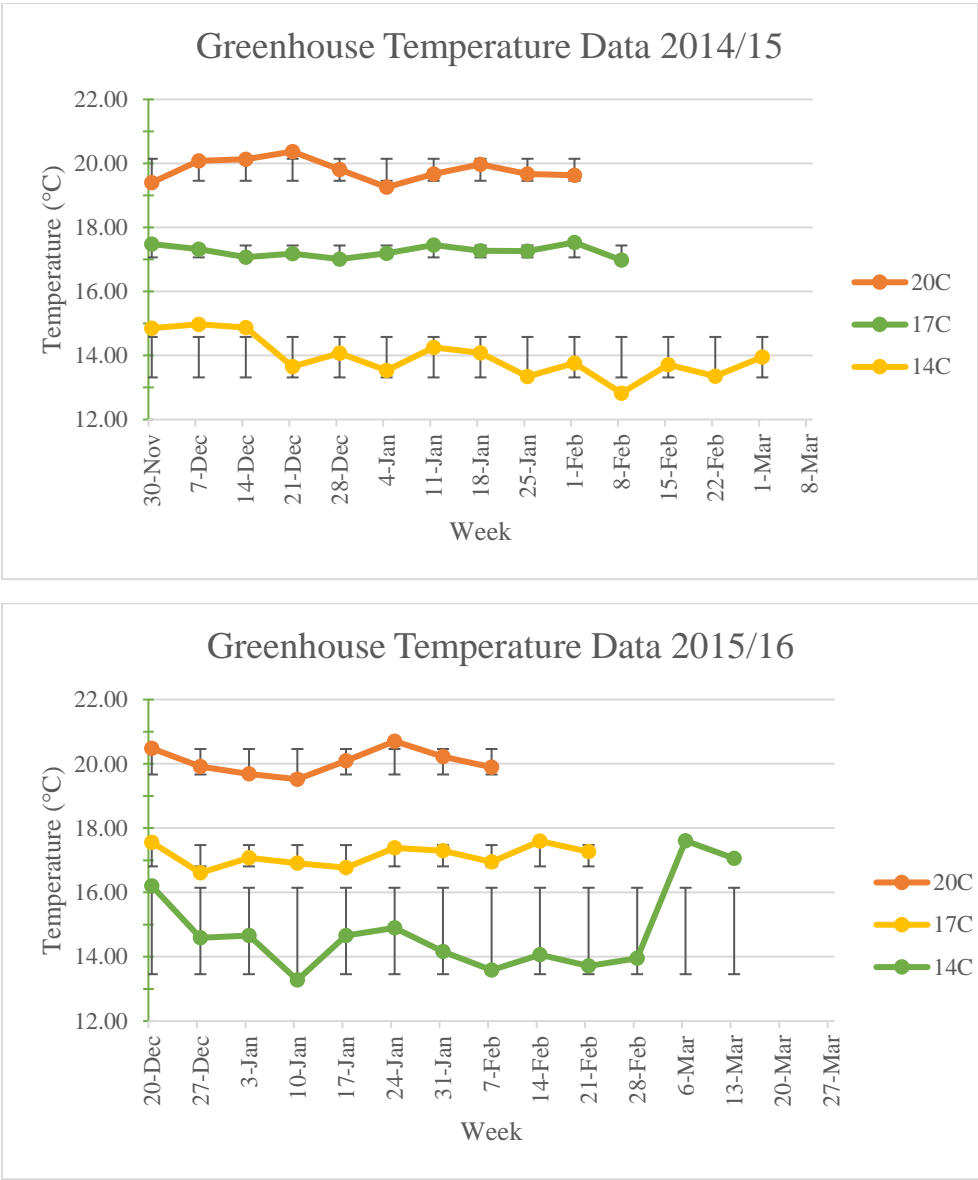


Figure S2. Frequency distribution for crop timing and quality traits for *P. axillaris* × *P. exserta* F<sub>7</sub> recombinant inbred line population at 14 °C evaluated in 2014 and 2015. Parental values for *P. axillaris* (AX) and *P. exserta* (EX) are indicated with arrows.

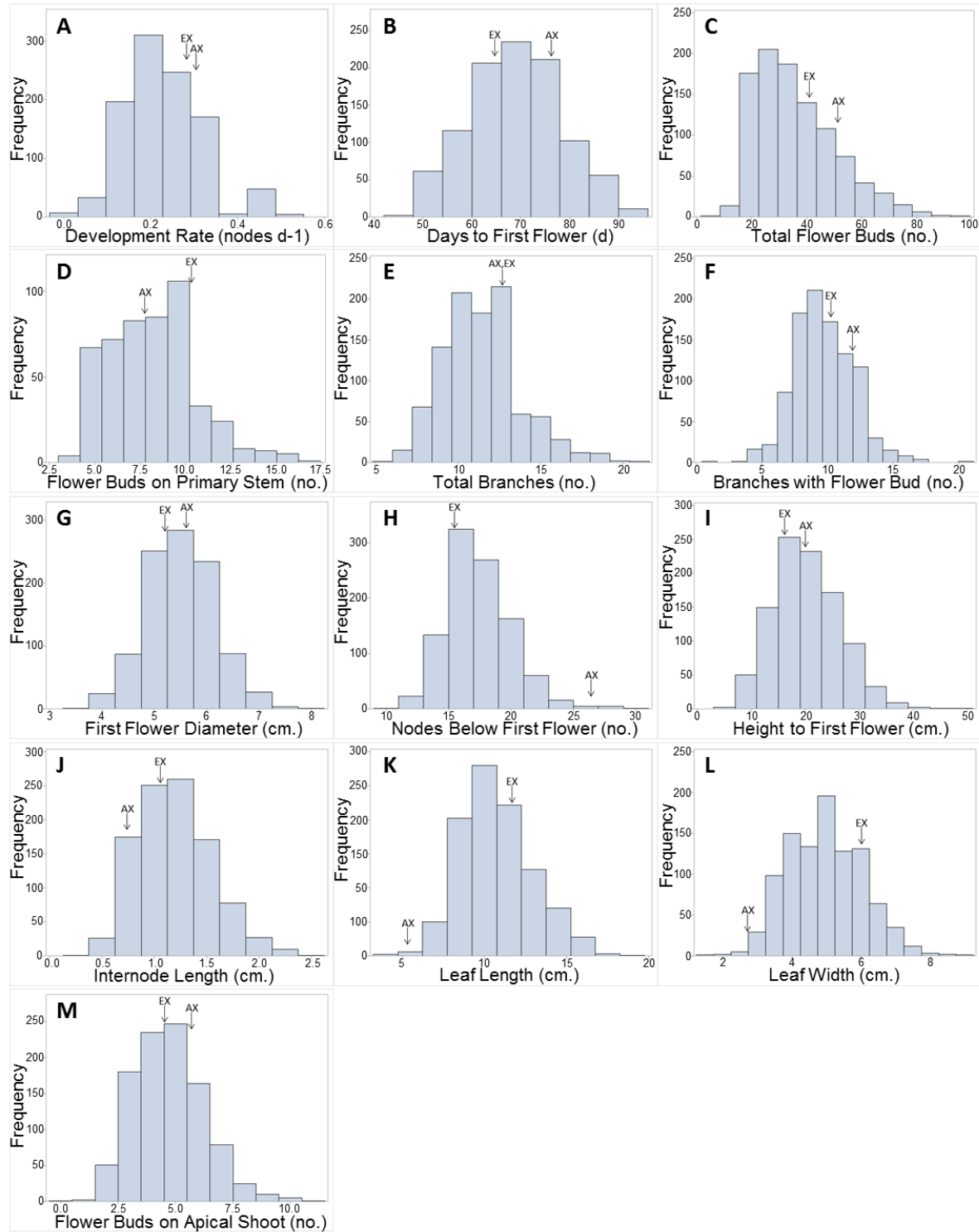


Figure S3. Frequency distribution for crop timing and quality traits for *P. axillaris* × *P. exserta* F<sub>7</sub> recombinant inbred line population at 17 °C evaluated in 2014 and 2015. Parental values for *P. axillaris* (AX) and *P. exserta* (EX) are indicated with arrows.

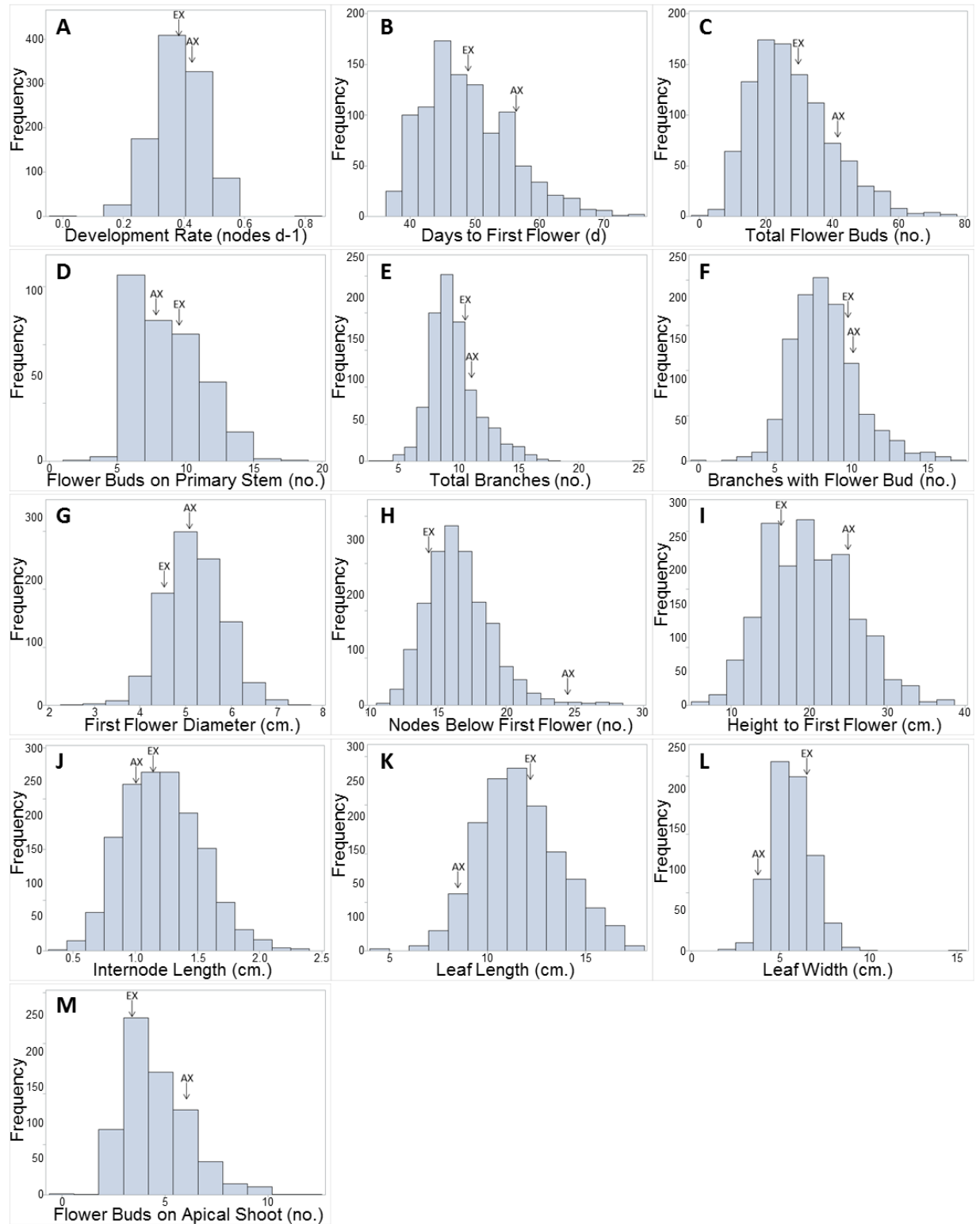


Figure S4. Frequency distribution for crop timing and quality traits for *P. axillaris* × *P. exserta* F<sub>7</sub> recombinant inbred line population at 20 °C evaluated in 2014 and 2015. Parental values for *P. axillaris* (AX) and *P. exserta* (EX) are indicated with arrows.

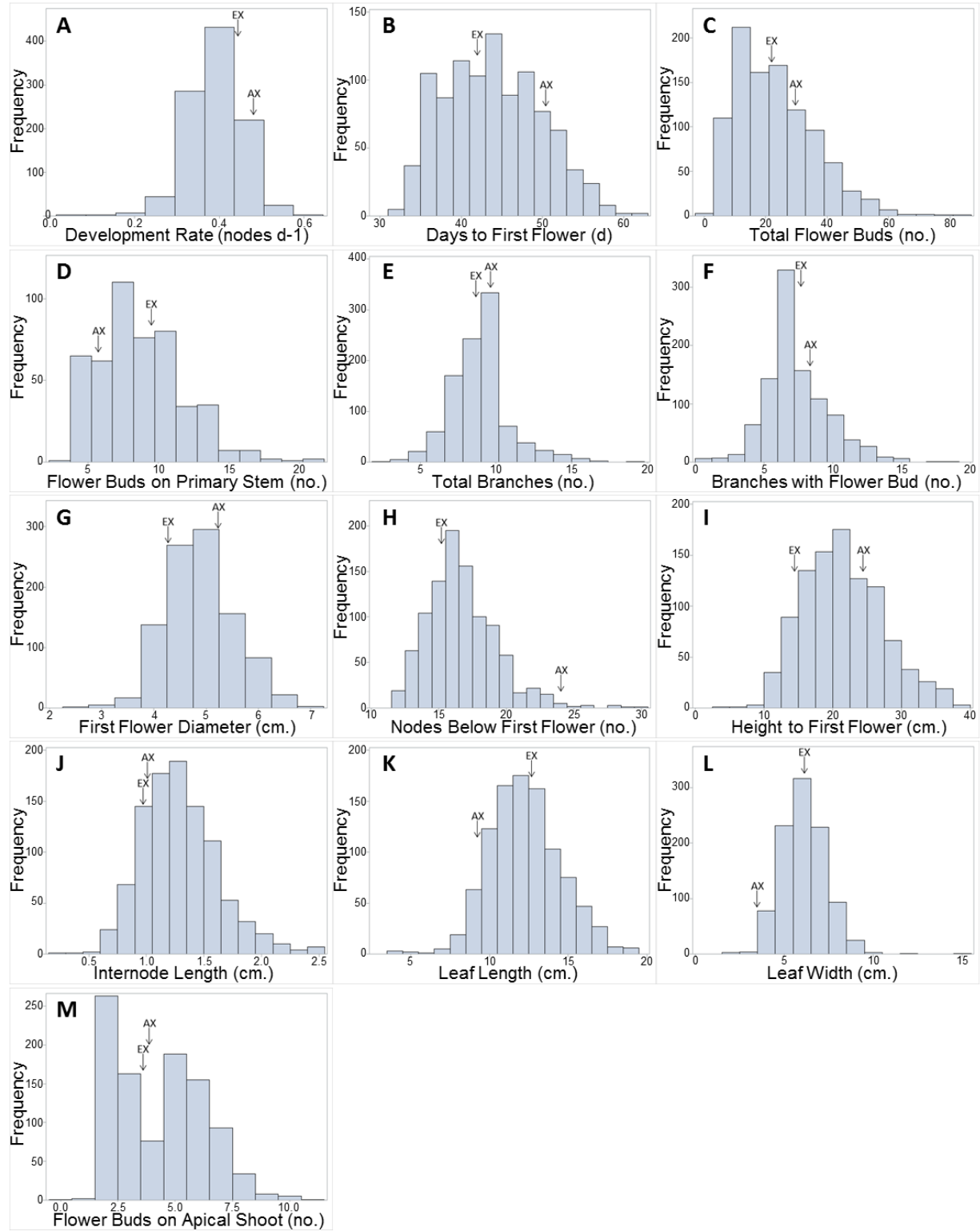


Fig. S5. Linkage map for the *P. axillaris* × *P. exserta* F<sub>7</sub> recombinant inbred line population

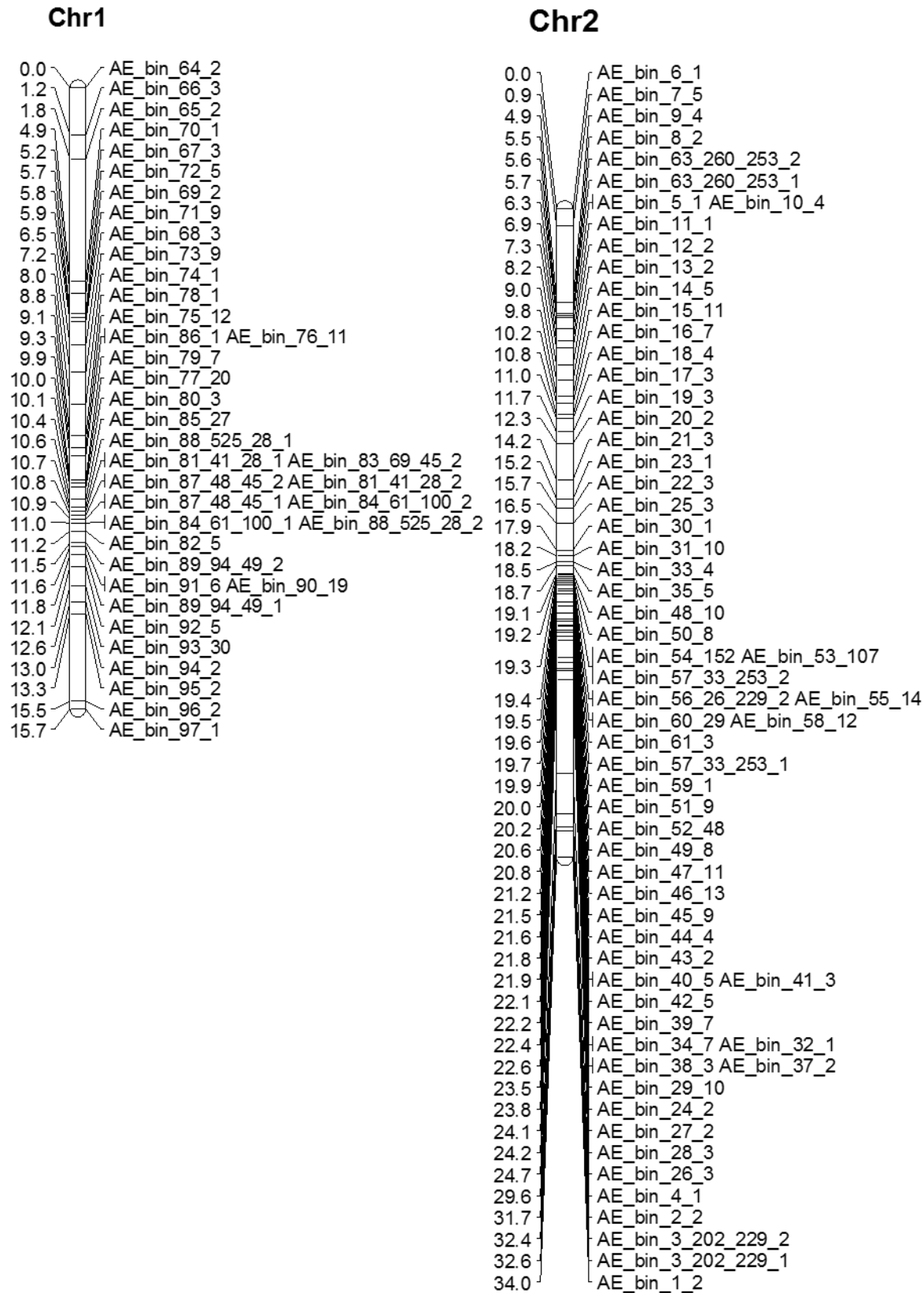




Fig. S5 (cont'd). Linkage map for the *P. axillaris* × *P. exserta* F<sub>7</sub> recombinant inbred line population

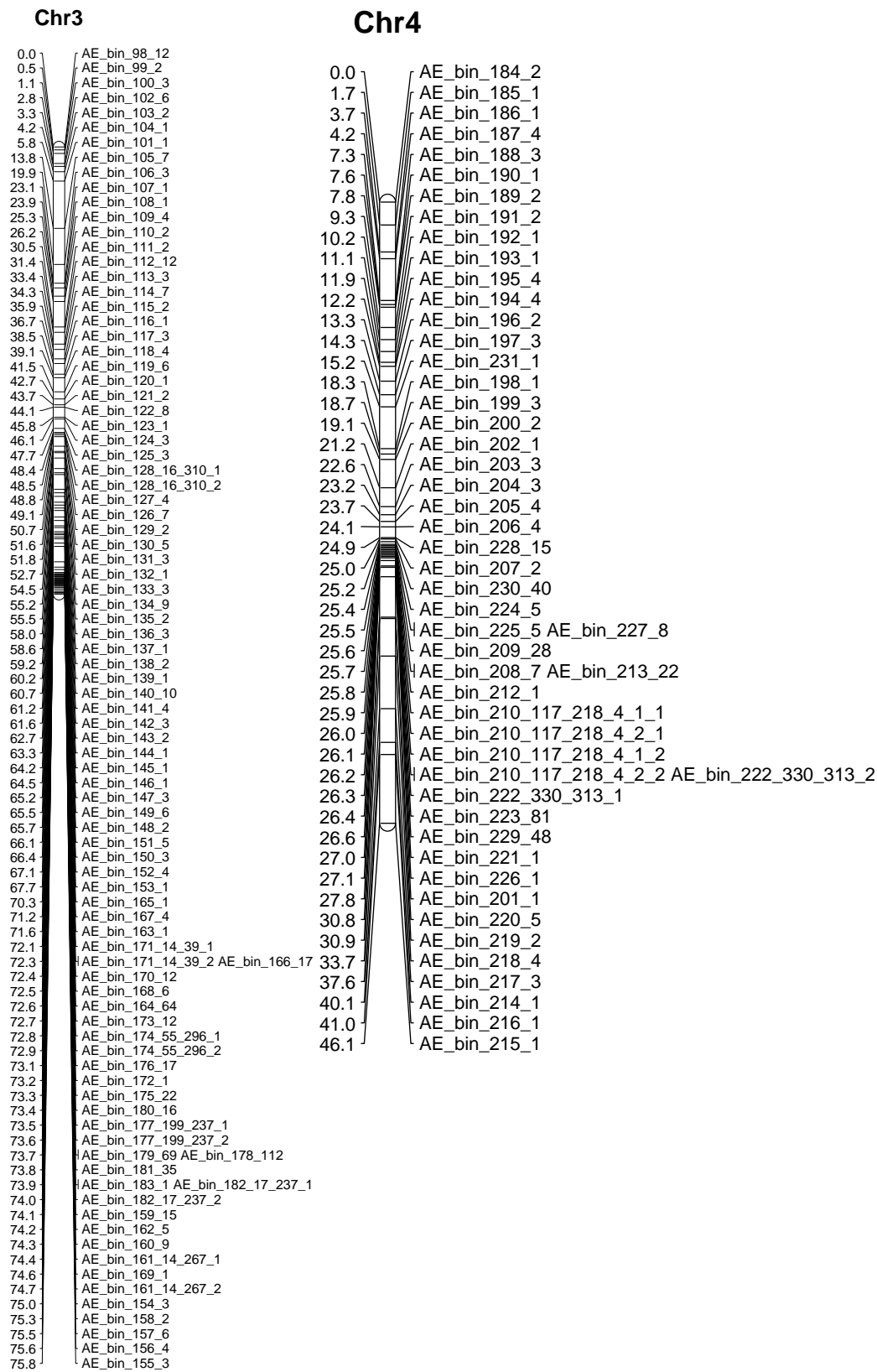


Fig. S5 (cont'd). Linkage map for the *P. axillaris* × *P. exserta* F<sub>7</sub> recombinant inbred line population

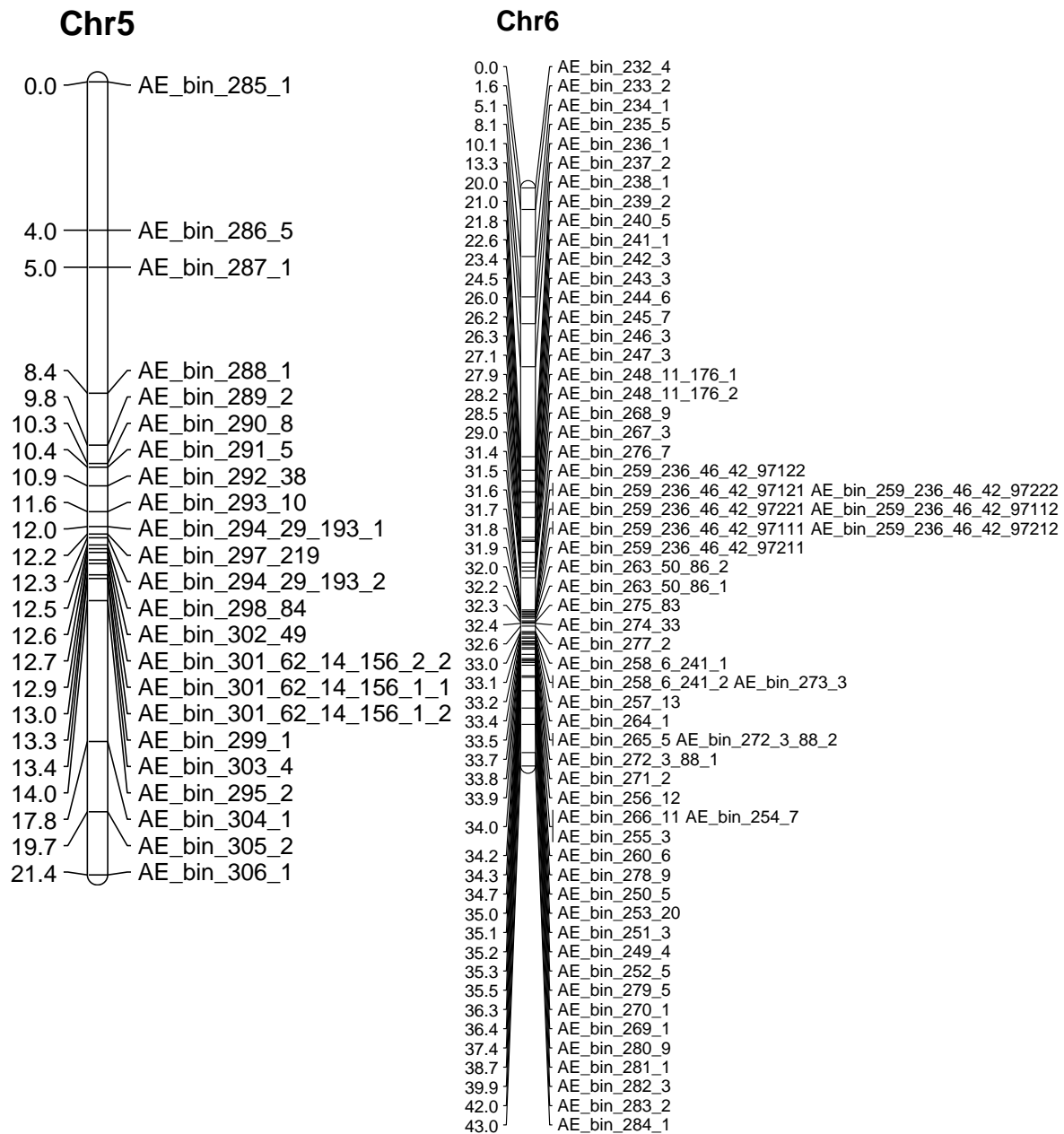


Fig. S5 (cont'd). Linkage map for the *P. axillaris* × *P. exserta* F<sub>7</sub> recombinant inbred line population

