

Genome-wide association study for morphological, phenological, quality and yield traits in
einkorn (*Triticum monococcum* L. subsp. *monococcum*)

Andrea Volante^{*1,2}, Delfina Barabaschi^{†,2}, Rosanna Marino[‡], Andrea Brandolini[§]

^{*} CREA - Research Centre for Cereal and Industrial Crops, s.s. 11 to Torino, km 2.5, 13100 Vercelli, Italy. Present
address: CREA - Research Centre for Vegetable and Ornamental Crops. E-mail: andrea.volante@crea.gov.it.

ORCID: 0000-0002-0463-5375

[†] CREA – Research Centre for Genomics and Bioinformatics. E-mail: delfina.barabaschi@crea.gov.it. ORCID:

0000-0002-1107-0210

[‡] CREA - Research Centre for Animal Production and Aquaculture. E-mail: rosanna.marino@crea.gov.it. ORCID:

0000-0002-5868-6696

[§] CREA - Research Centre for Animal Production and Aquaculture. E-mail: andrea.brandolini@crea.gov.it.

ORCID: 0000-0002-4552-4081

**File S3. Manhattan and QQplot resulting from the association analyses for the considered traits.
These latter are shown in alphabetical order.**

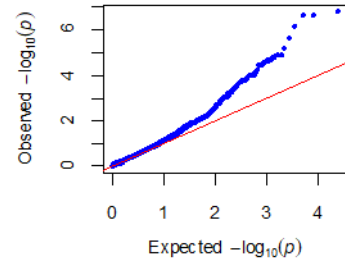
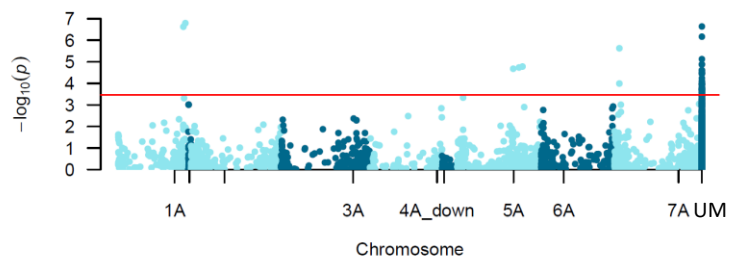
Unmapped markers are labeled “UM”. The red line represents the significance threshold of 0.05
adjusted for the False Discovery Rate with the Benjamini-Hochberg test (see Materials and Methods
for details).

¹ Present Address: CREA Research Centre for Vegetable and Ornamental Crops, Corso Inglesi 508, 18038
Sanremo, IM, Italy

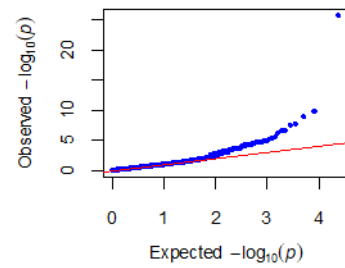
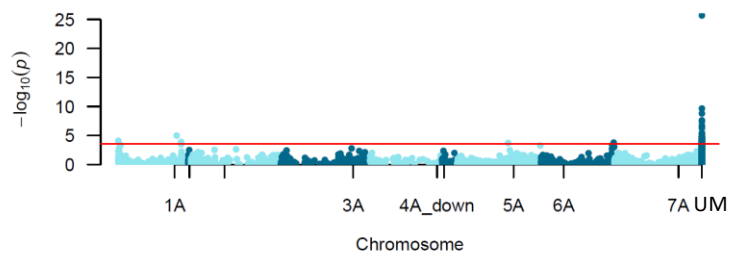
² These two authors contributed equally to the paper

MLM+K

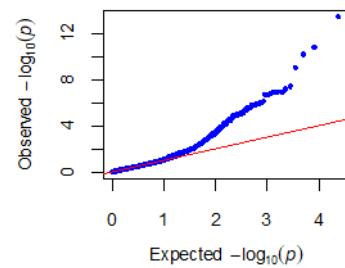
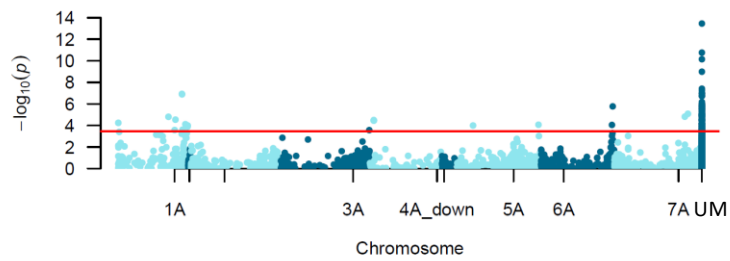
AWN



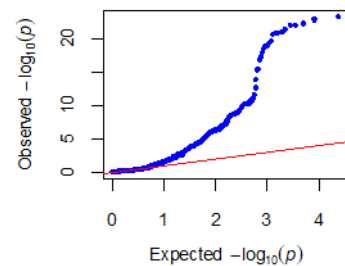
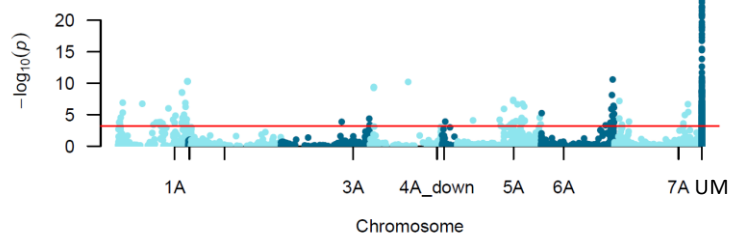
GLC



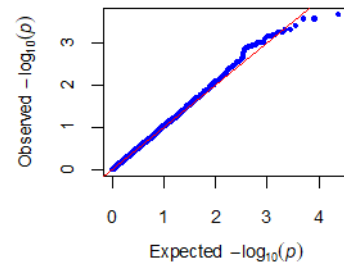
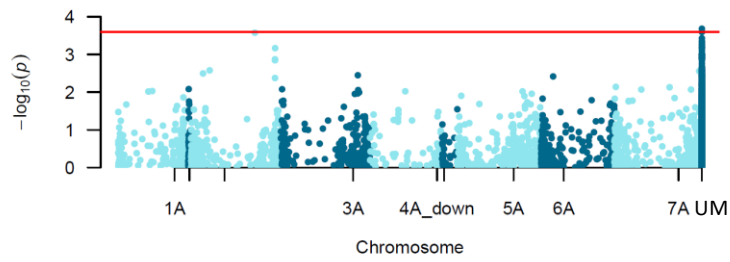
GLH



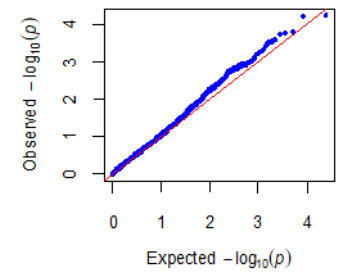
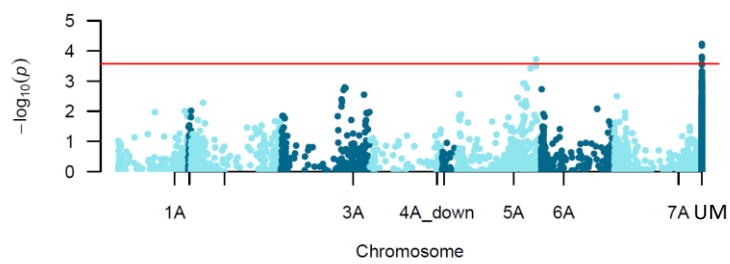
GRC



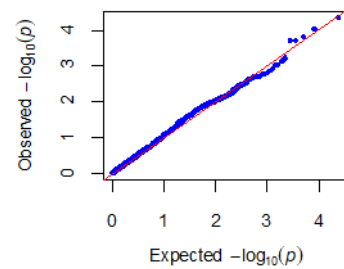
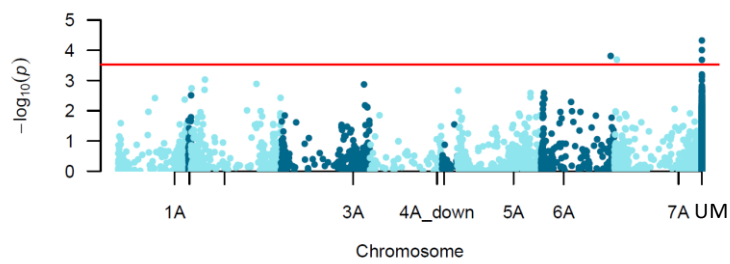
GRL



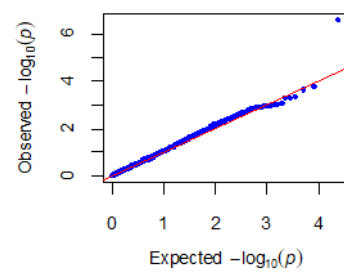
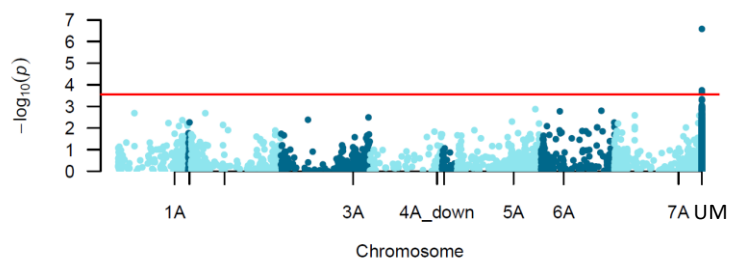
GRT



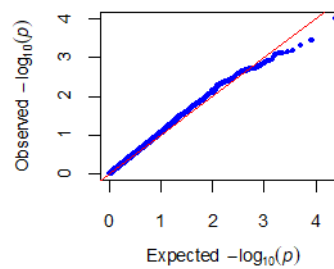
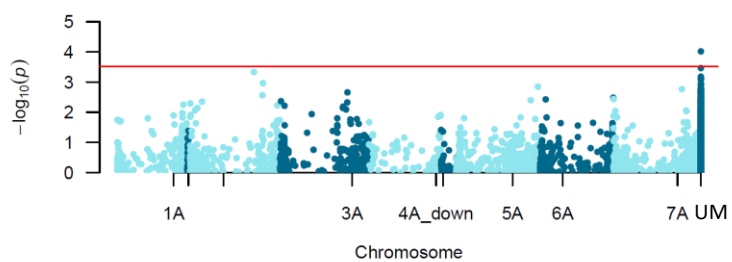
GRW



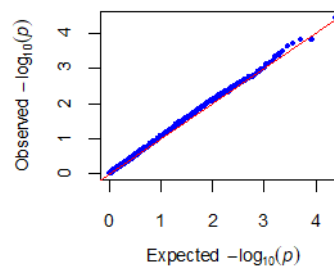
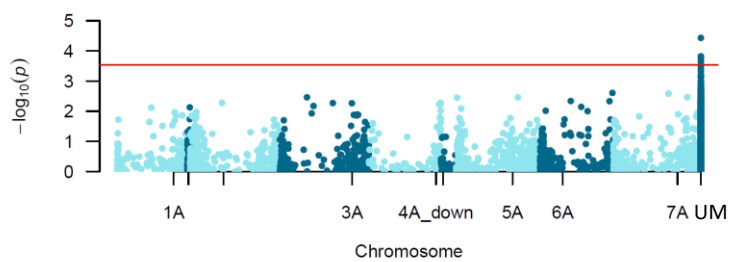
RAB



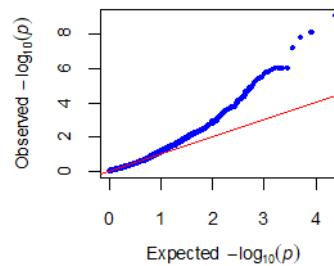
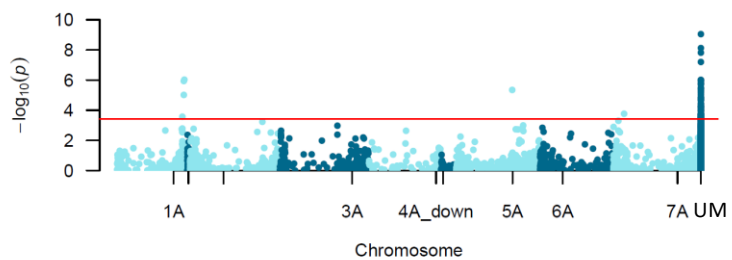
SPD



SPL

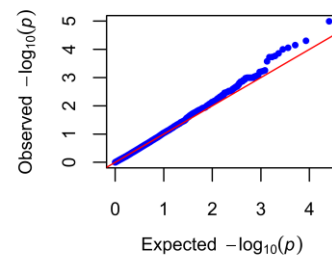
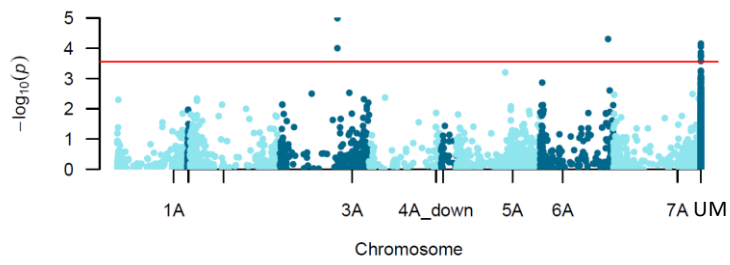


SSH

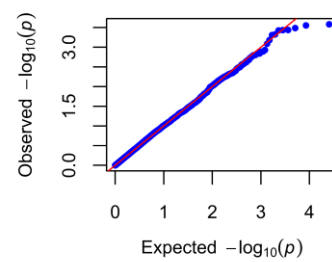
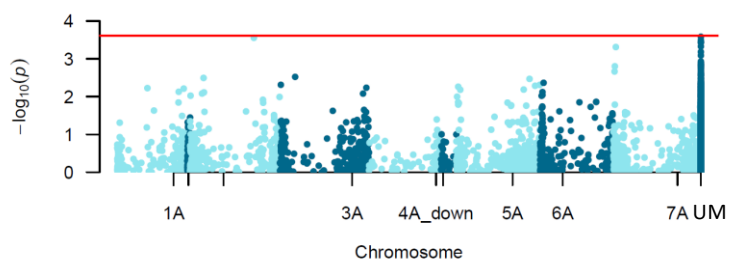


MLM + K+ PCA

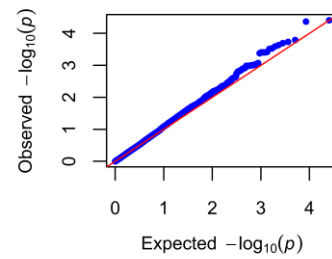
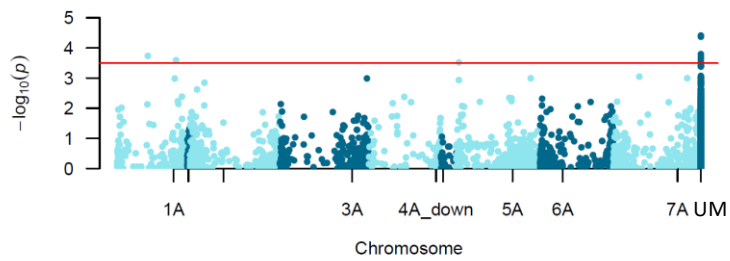
CAR



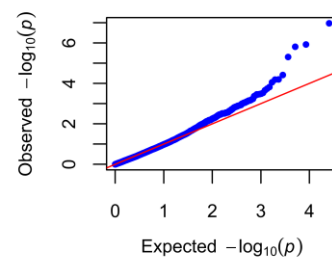
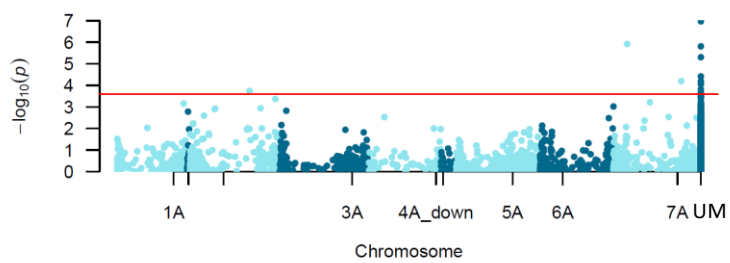
GRV



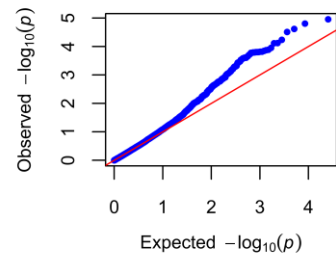
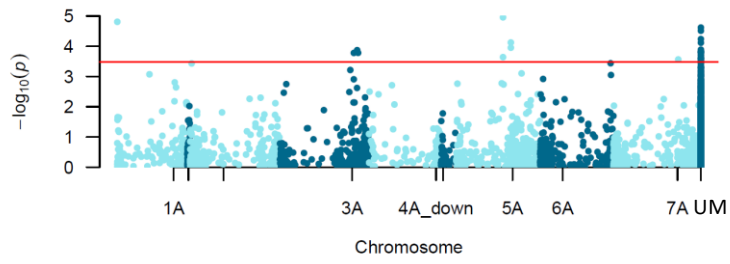
GTX



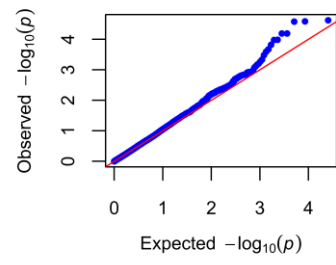
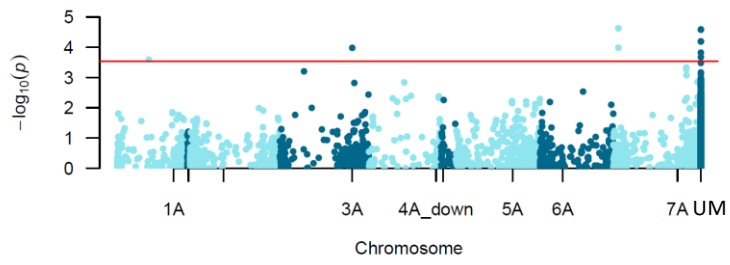
HDA



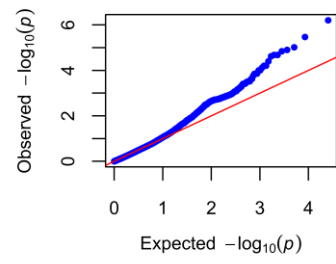
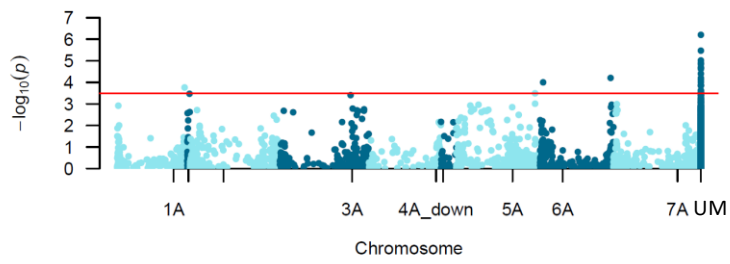
PLH



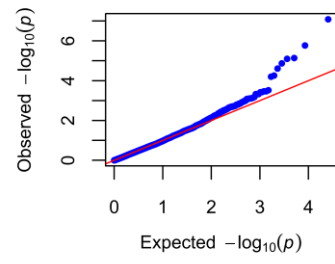
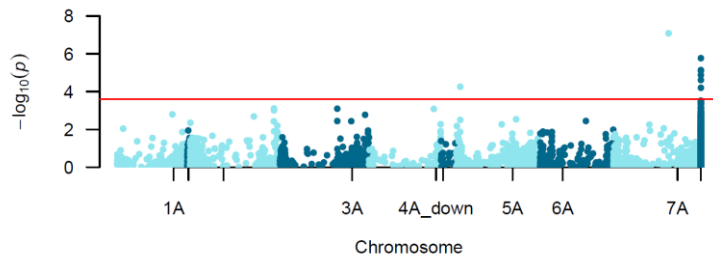
PRO



SDS



SPS



TGW

