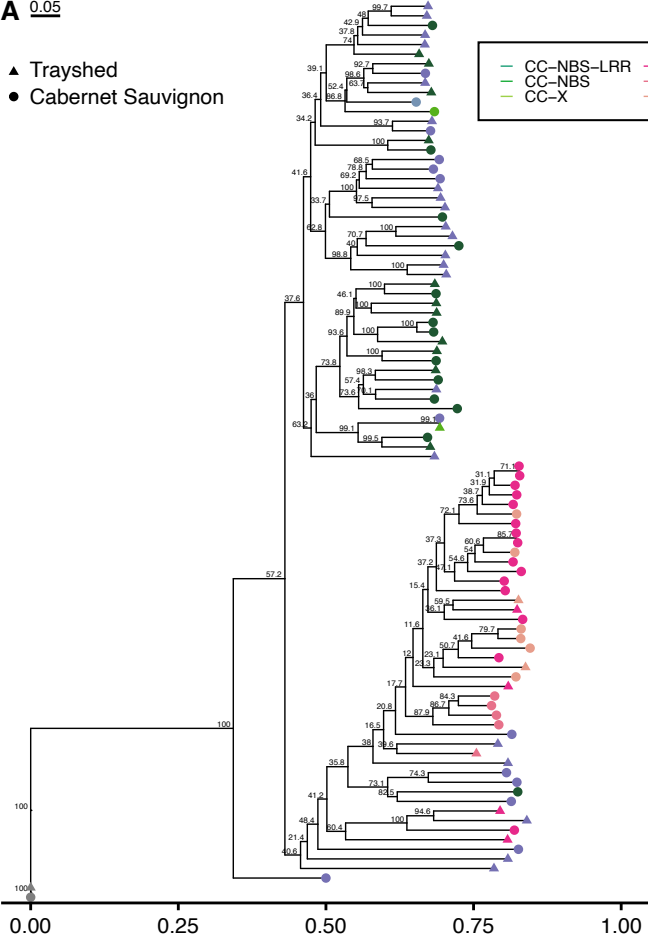
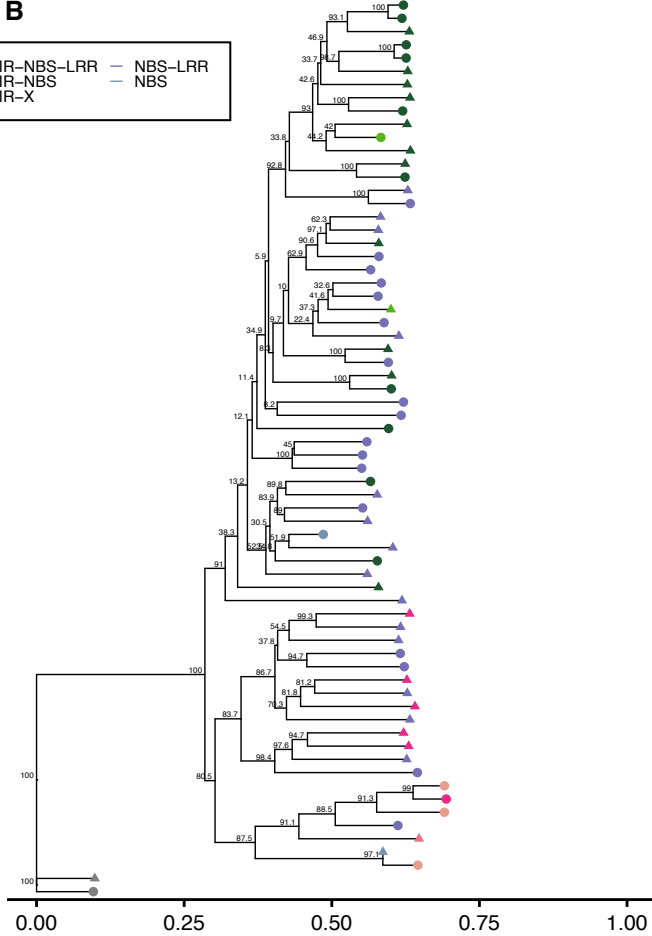


A

- ▲ Trayshed
- Cabernet Sauvignon

**B**

Supplemental Figure S8: Phylogenetic analysis of the NBS-LRR proteins in Trayshed and Cabernet Sauvignon *RUN1/RPV1* loci.

Phylogenetic trees built using Trayshed Hap1 and Cabernet Sauvignon Hap2 NBS-LRR proteins from their respective *RUN1/RPV1* loci (**A**), and Trayshed Hap2 with Cabernet Sauvignon Hap1 (**B**). GAPDH was used to root the tree and is colored in grey.