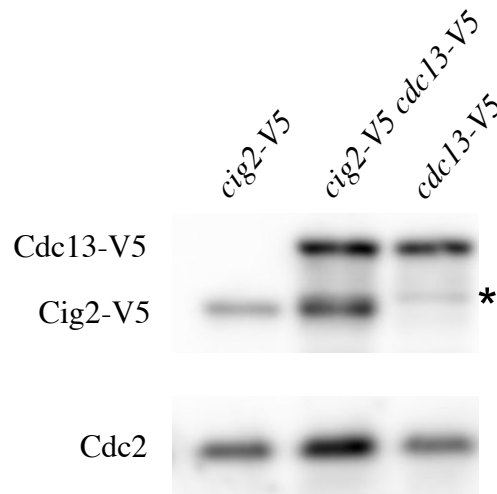


Figure S2



Supplemental Figure 2: Cdc13 protein levels are higher than Cig2 protein levels in cycling cells

Strains expressing C-terminal V5 fusion proteins for Cig2 (yFS1084; *cig2-V5*), Cdc13 (yFS1085; *cdc13-V5*) or both Cig2 and Cdc13 (yFS1086; *cig2-V5 cdc13-V5*) were grown in YES to mid-log phase, and whole cell extracts were analyzed for V5 expression by Western Blot. Protein levels were normalized to the Cdc2 loading control. The asterisk indicates a smaller V5-tagged protein product in the Cdc13-V5 sample. To determine relative expression of Cdc13-V5 and Cig2-V5, the intensity of this band was subtracted from the *cig2-V5 cdc13-V5* sample. The ratio of relative Cdc13-V5: Cig2-V5 protein levels in the *cdc13-V5* strain: *cig2-V5* strain is 1.4 and in the *cig2-V5 cdc13-V5* strain is 3.0.