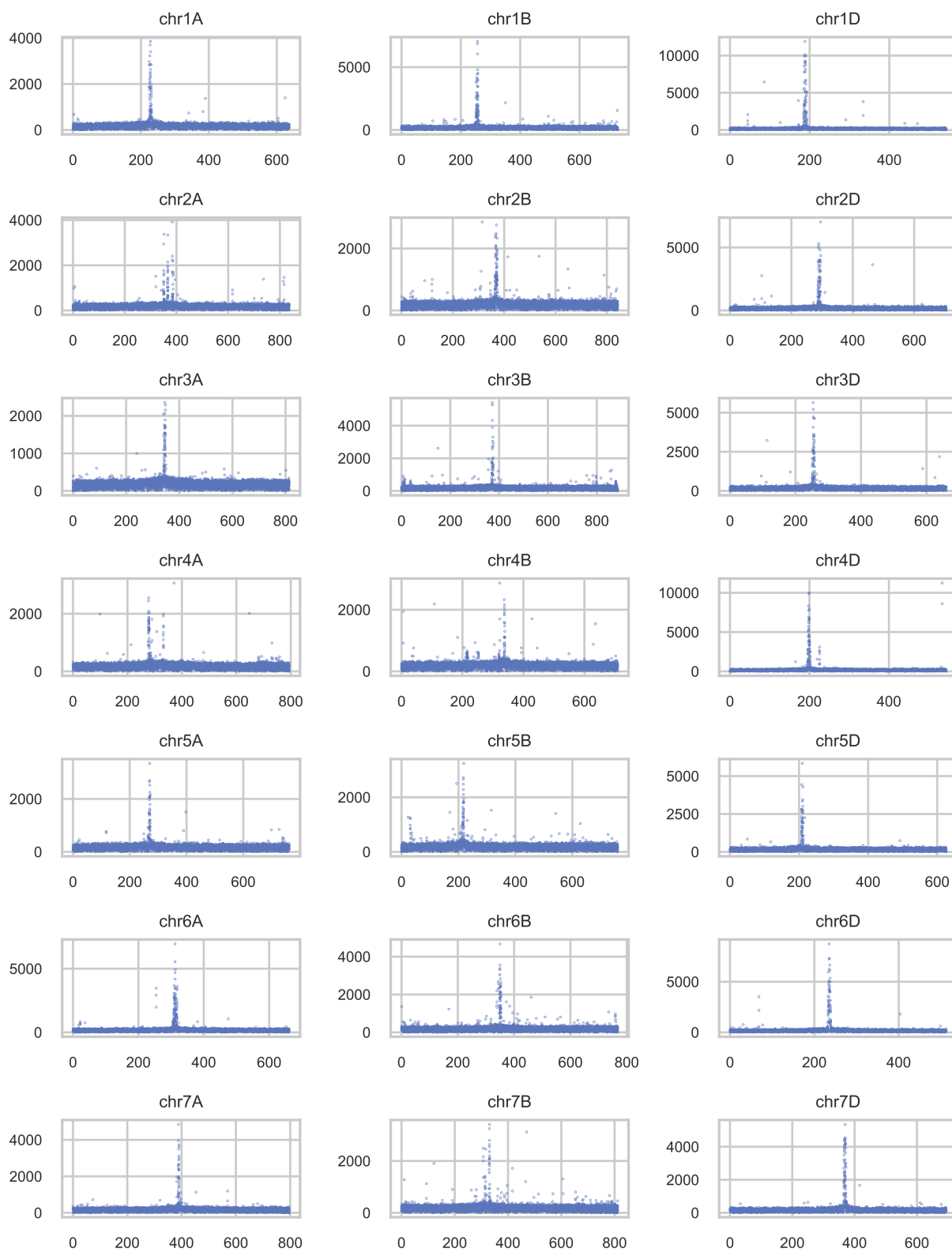


CENH3 ChIP-seq Reads



Position (Mbp)

Figure S3. *Triticum aestivum*_4.0 CENH3 ChIP-seq coverage. Scatter plots depicting the number of CENH3 ChIP-seq read alignments (y-axis) in 100 kbp non-overlapping windows (x-axis) of the *Triticum aestivum*_4.0 genome assembly. Peaks in these scatterplots correspond to putative centromere sequences.