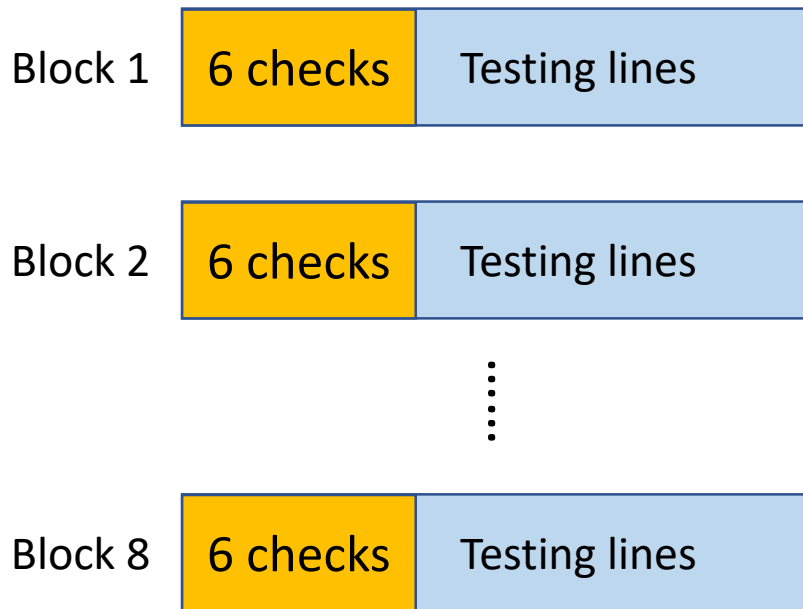


Experimental design

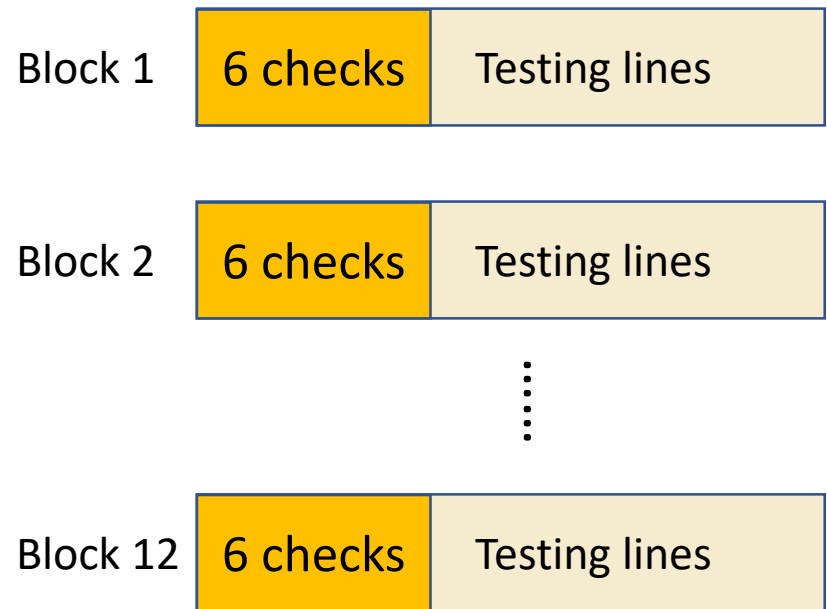
- Augmented design

Replicate 1 in Taipei



(sample size varying from 118 to 156)

Replicate 2 in Aberdeen



(sample size varying from 48 to 144)

Figure S1

Illustration of average growth at Day 5



X9503-1

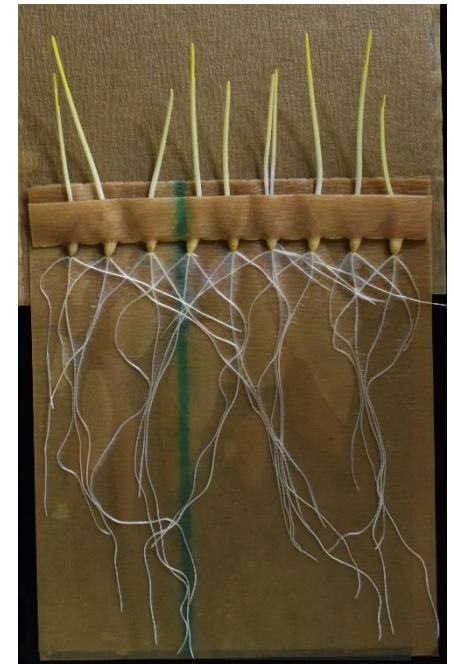


HA05AB9-32

Replicate done in Aberdeen



X9503-1



HA05AB9-32

Replicate done in Taipei

Figure S2

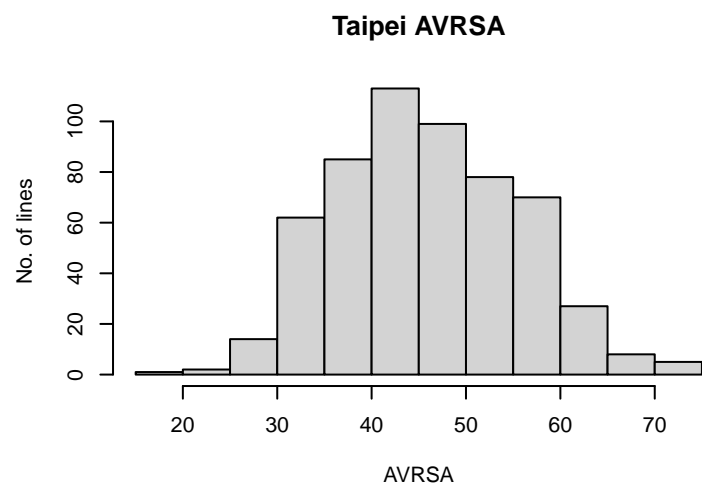
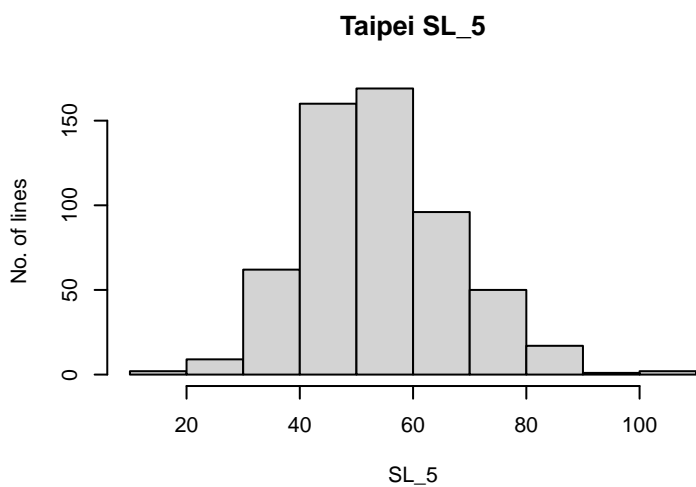
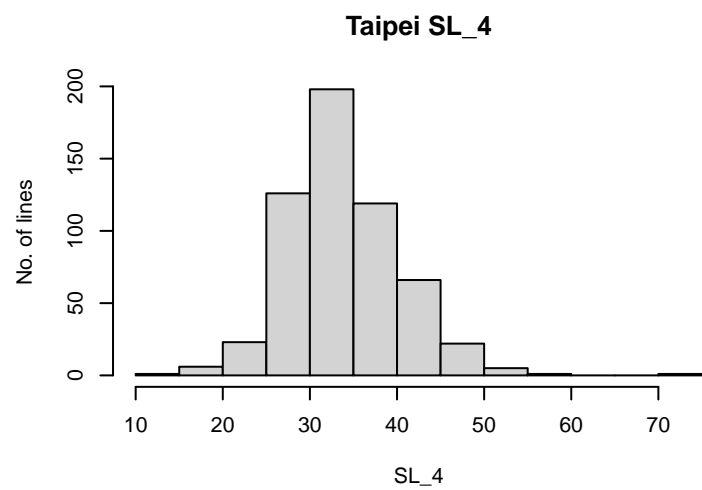
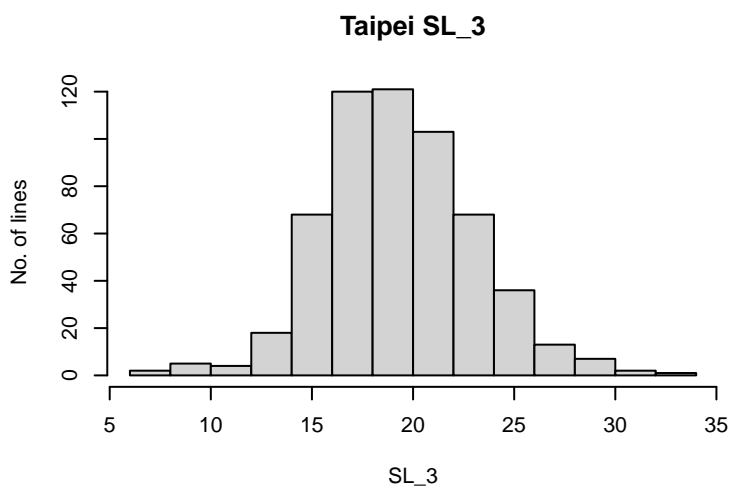
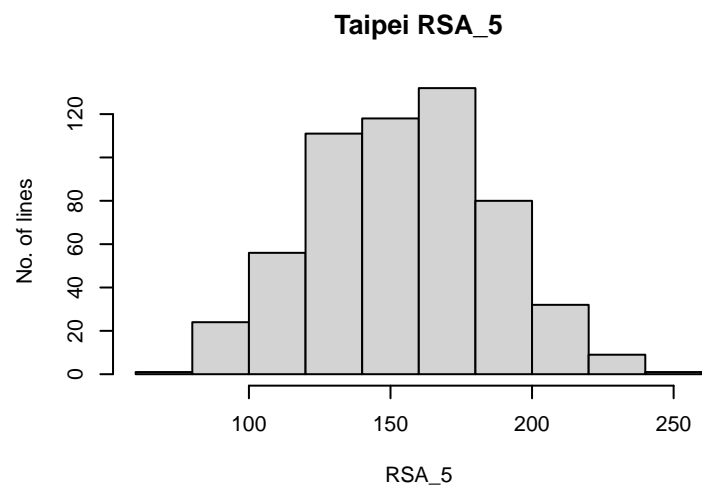
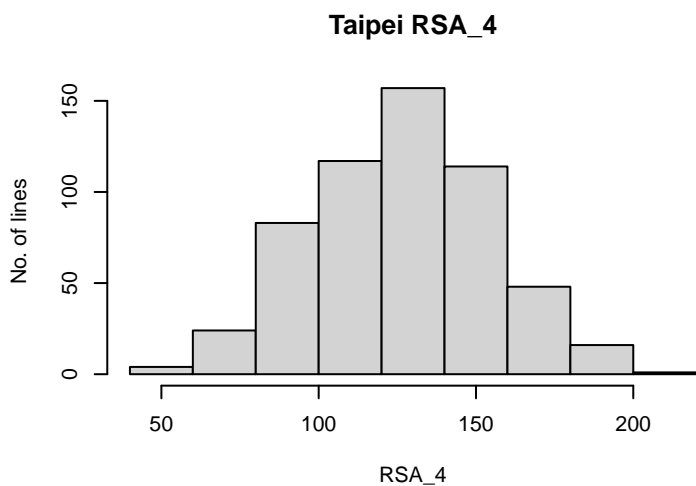
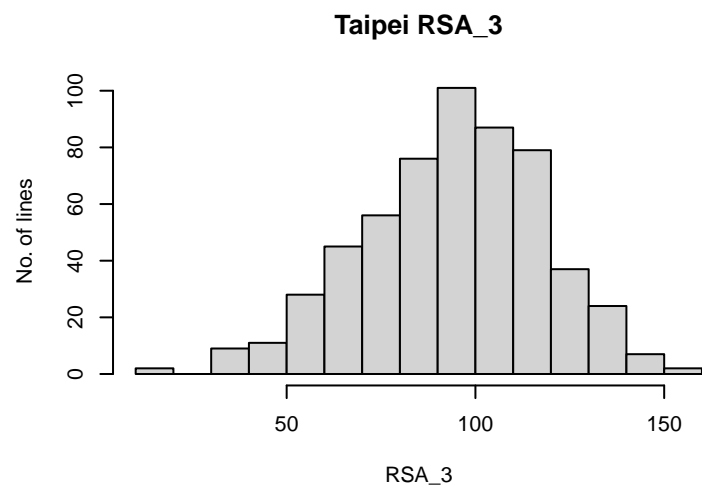
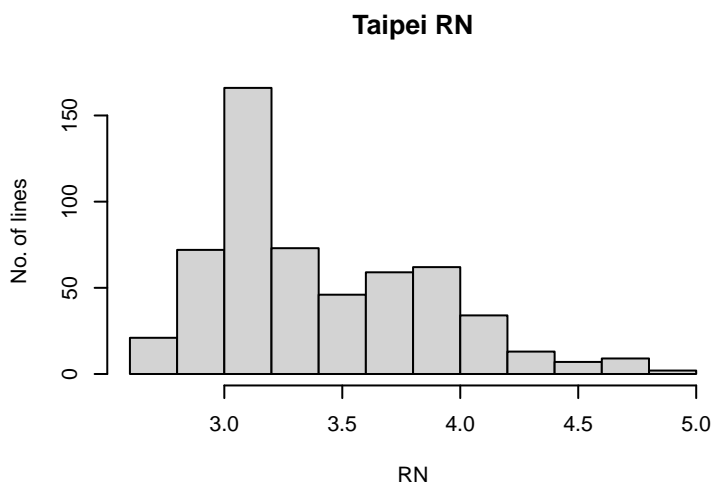
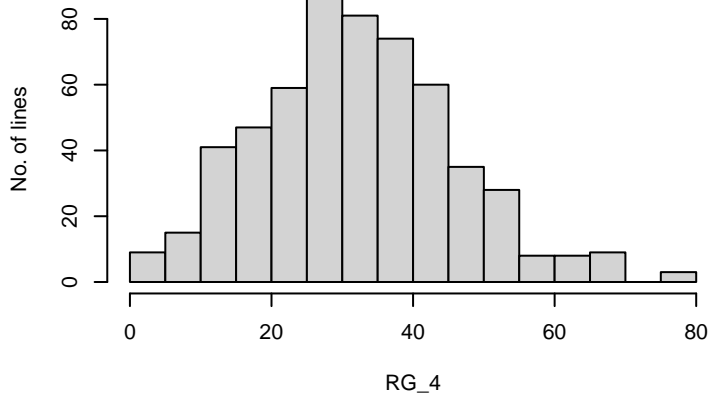
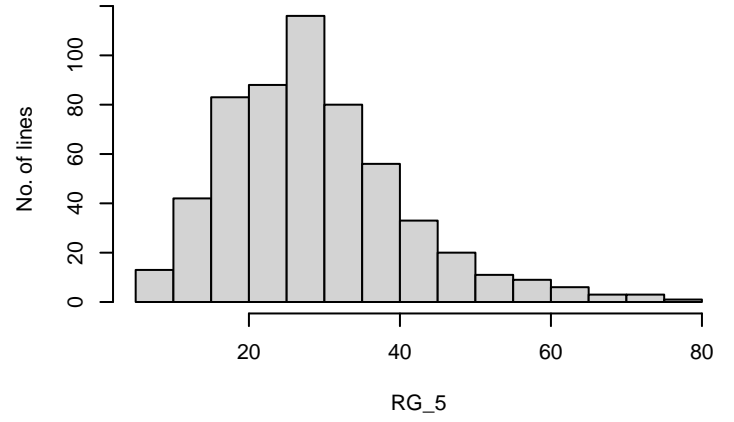


Figure S3: Trait distribution (continue)

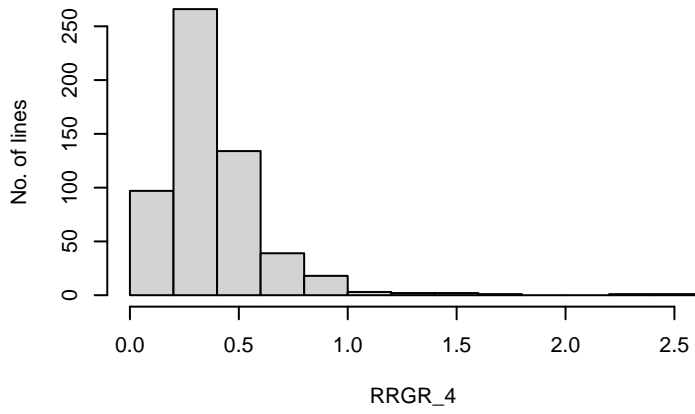
Taipei RG_4



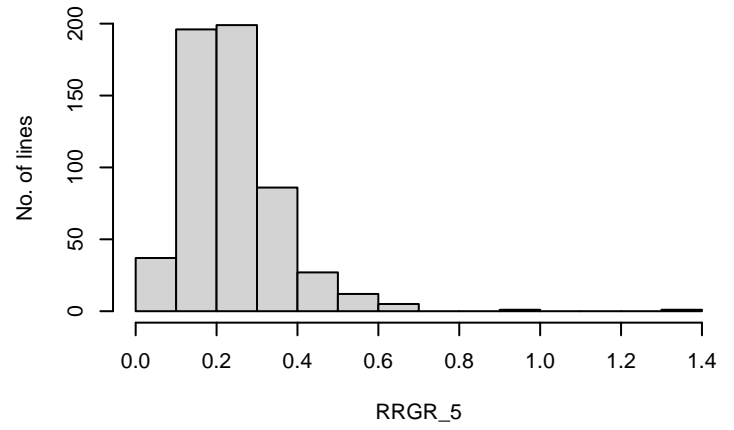
Taipei RG_5



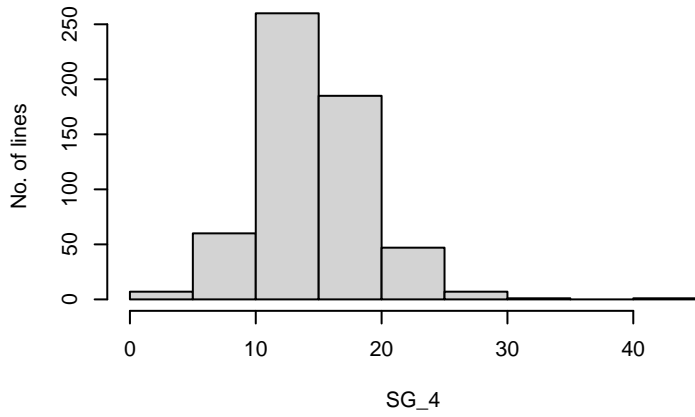
Taipei RRGR_4



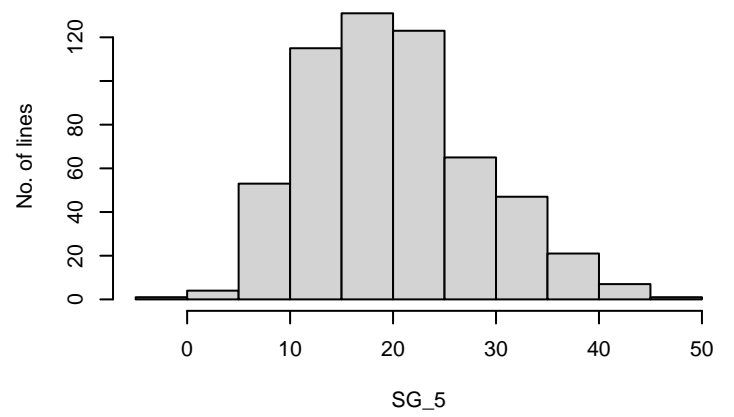
Taipei RRGR_5



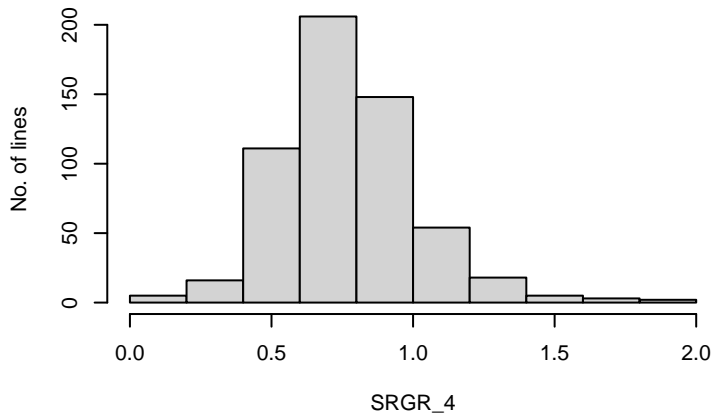
Taipei SG_4



Taipei SG_5



Taipei SRGR_4



Taipei SRGR_5

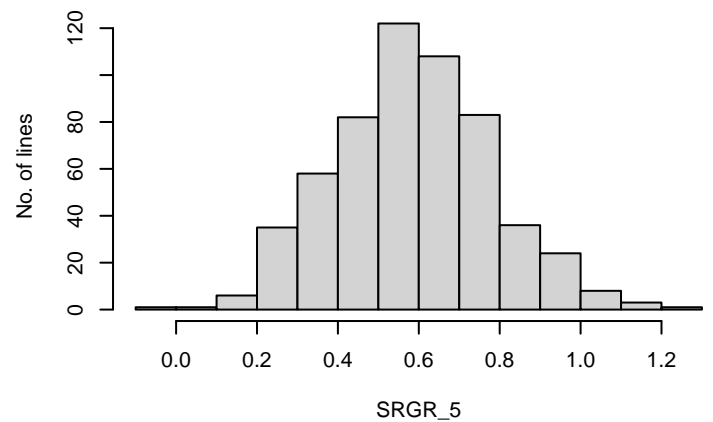


Figure S3: Trait distribution (continue)

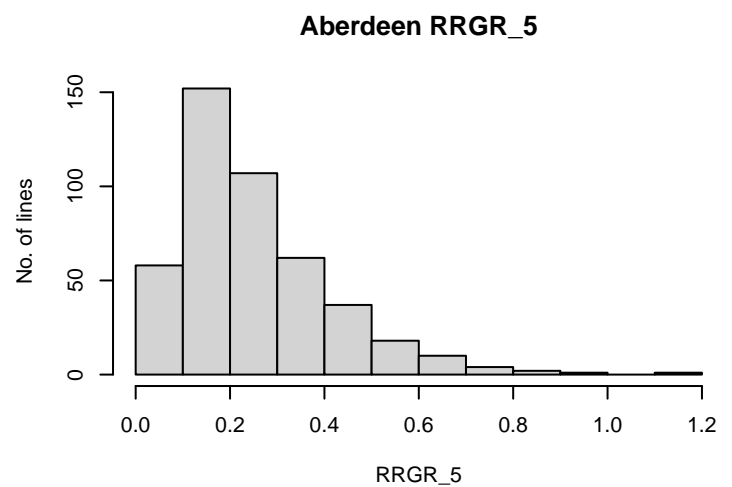
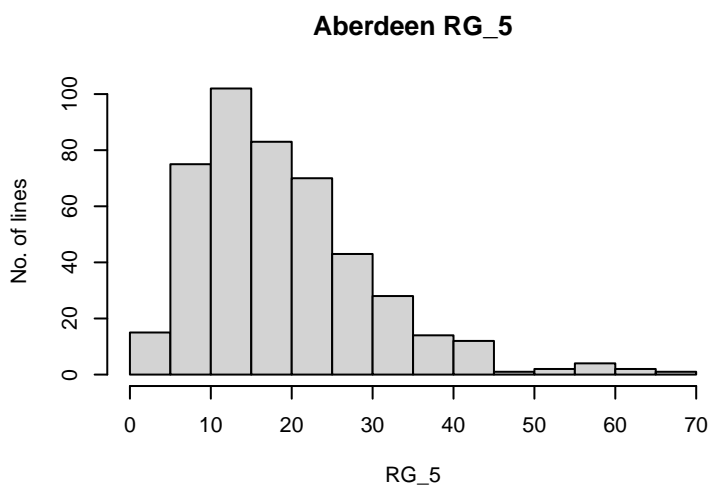
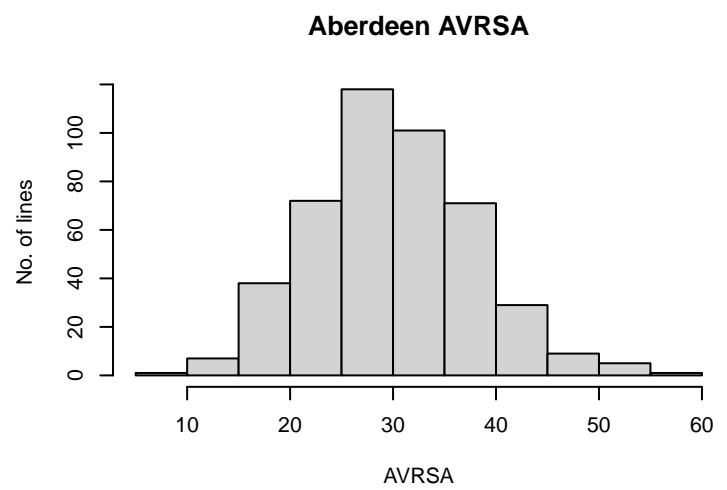
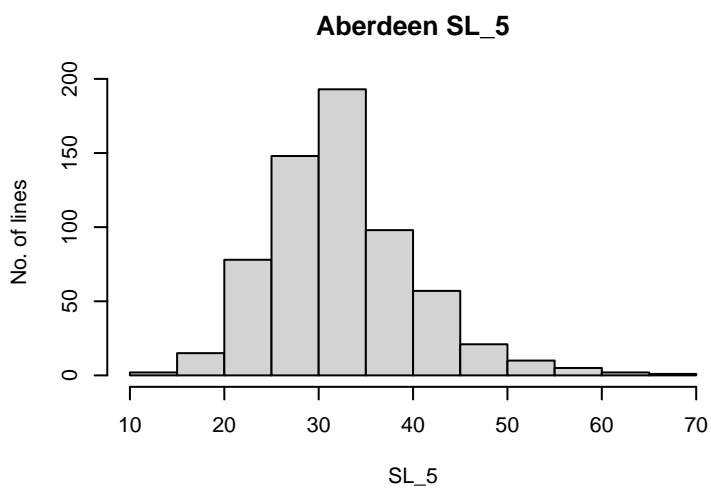
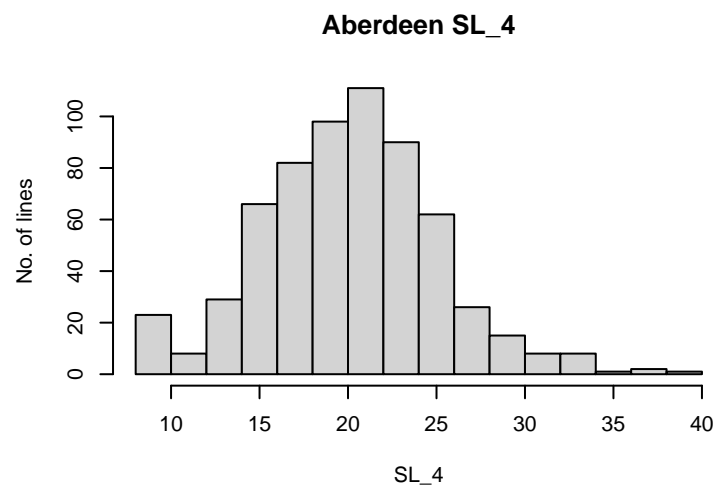
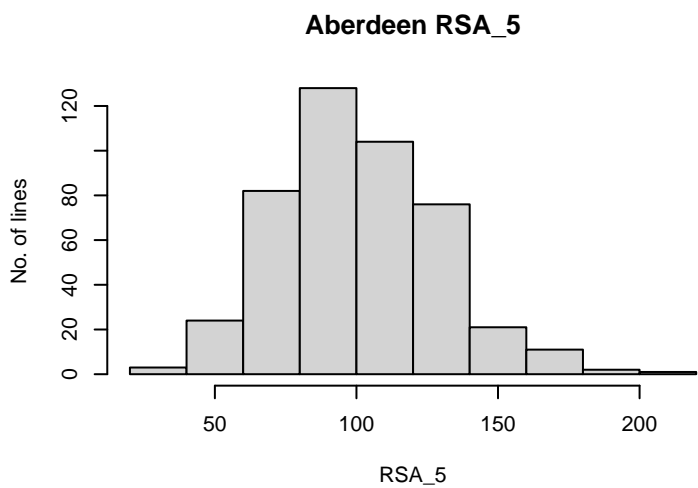
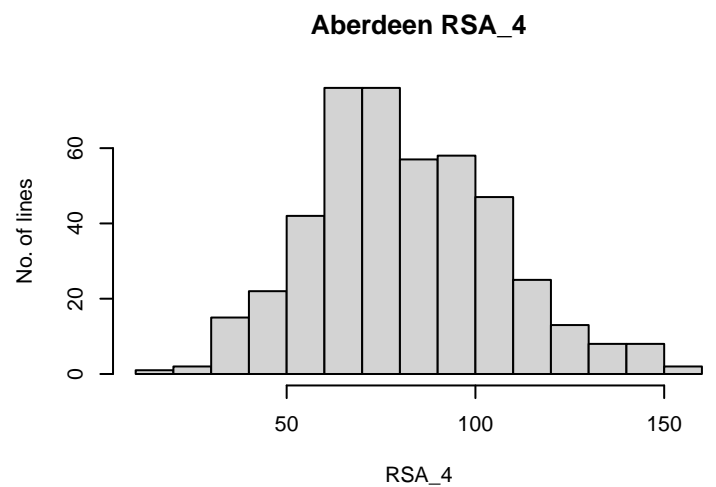
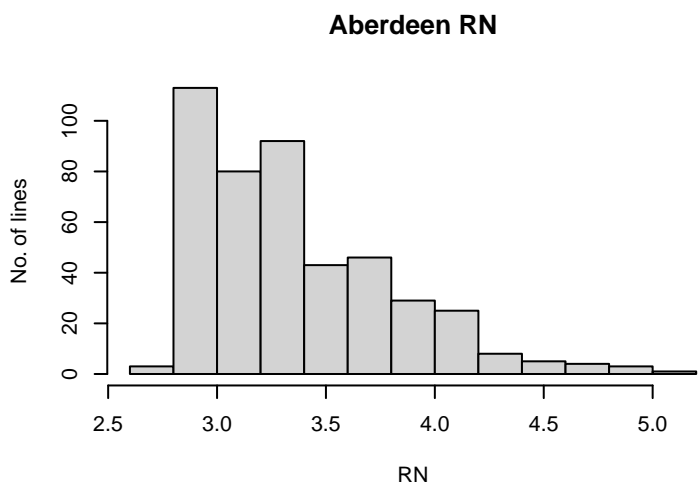


Figure S3: Trait distribution (continue)

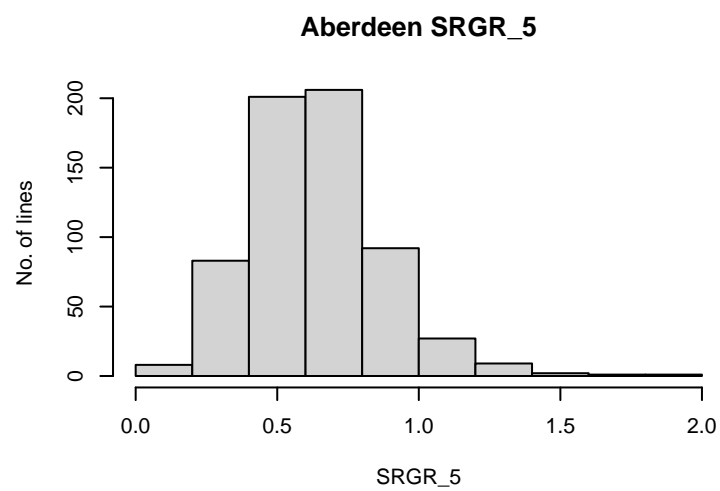
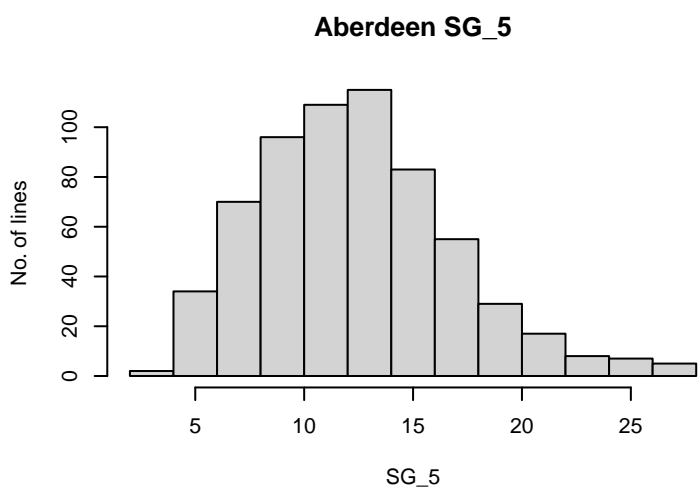


Figure S3: Trait distribution

Correlation between traits (Taipei vs. Aberdeen)

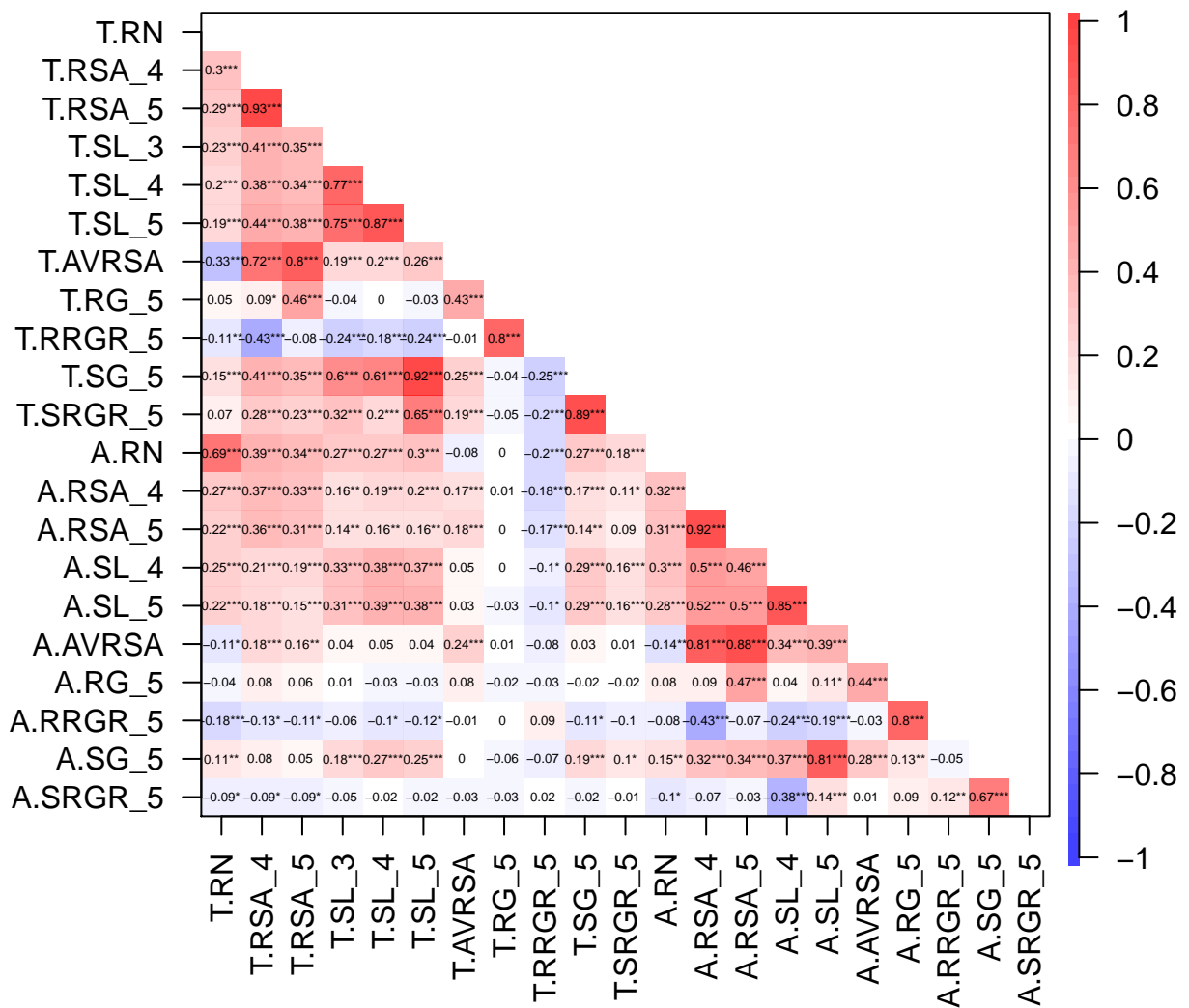


Figure S4: Correlation between traits (Taipei vs. Aberdeen)

Correlation between traits (Taipei)

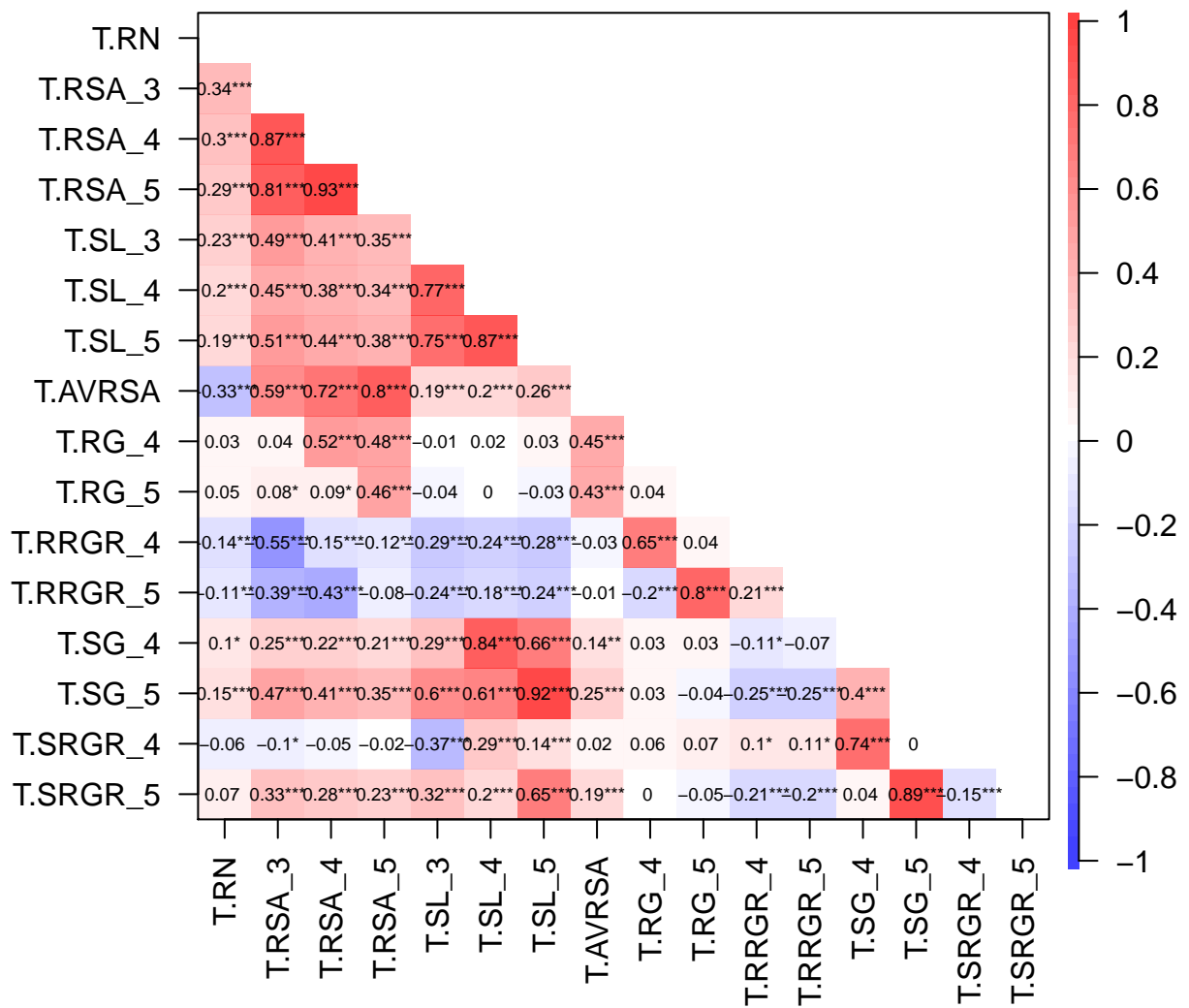


Figure S5: Correlation between traits (Taipei)

Correlation between traits (Aberdeen)

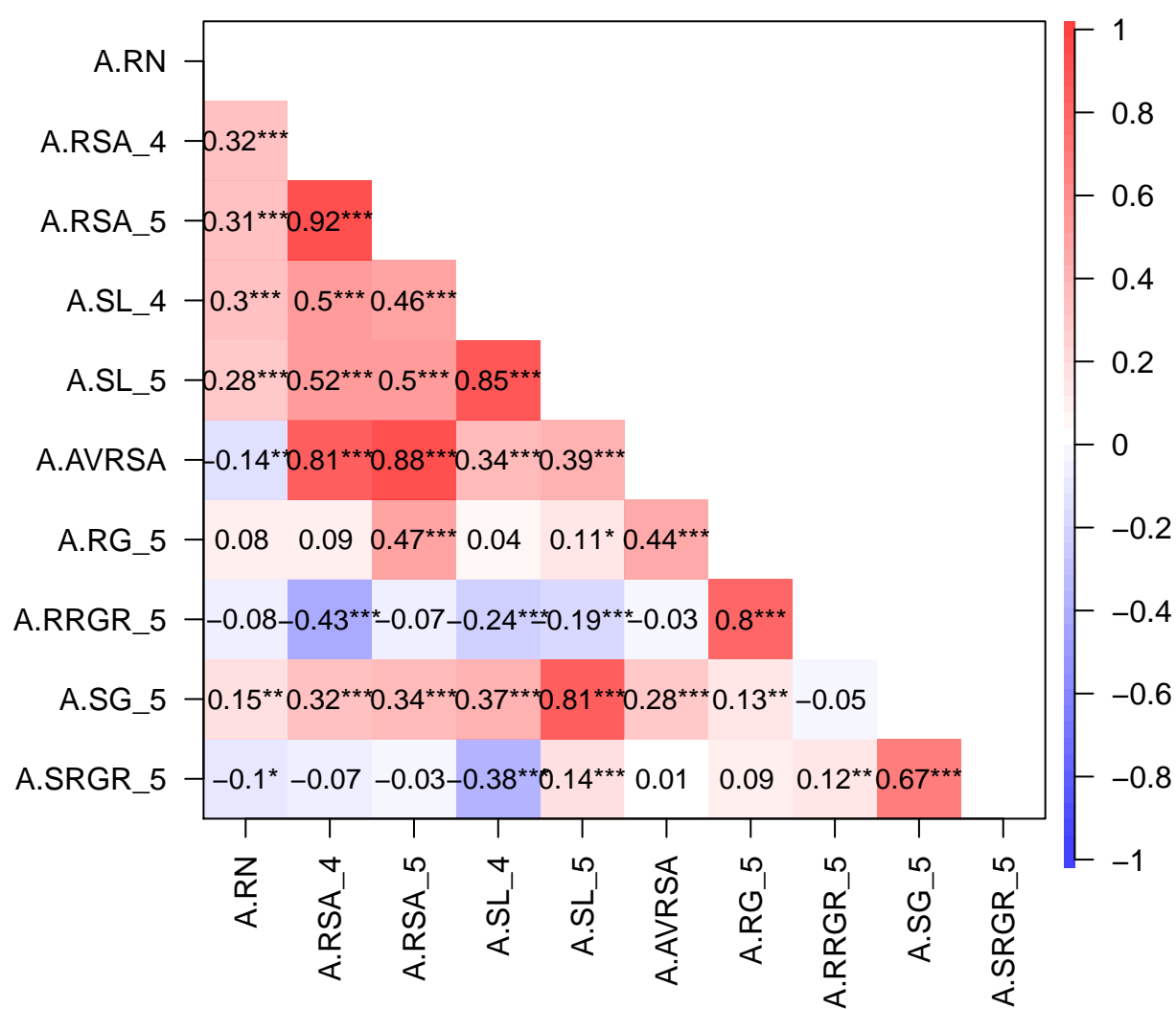


Figure S6: Correlation between traits (Aberdeen)