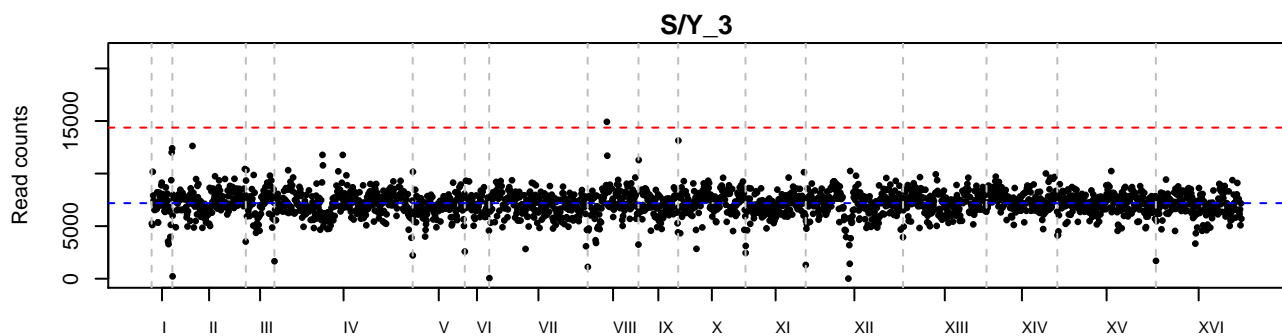
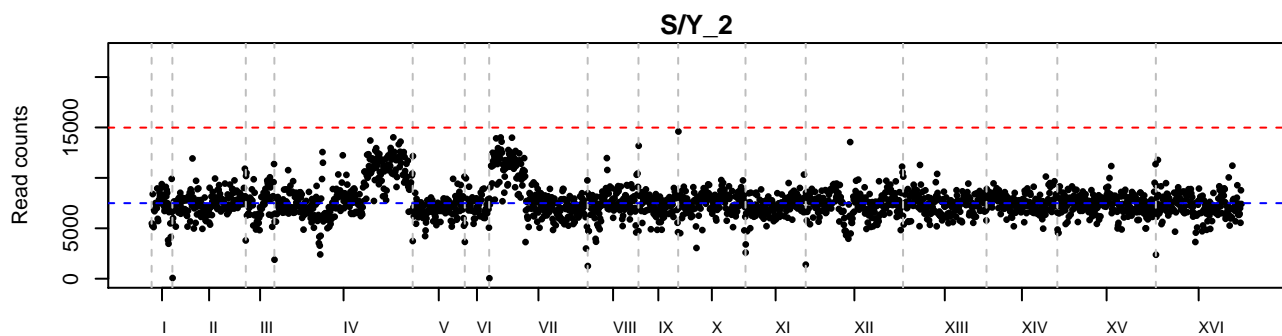
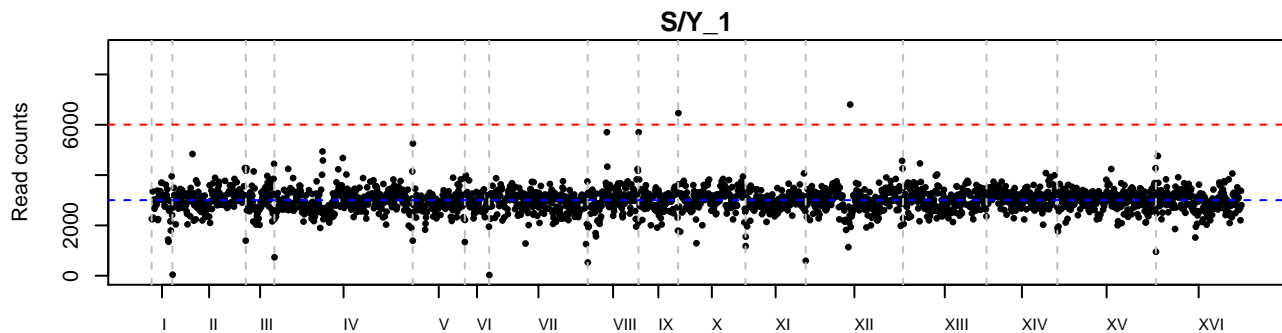
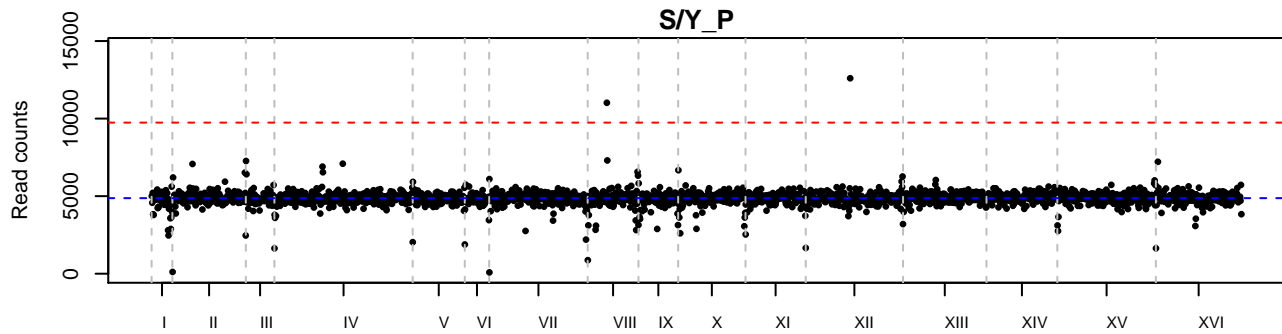
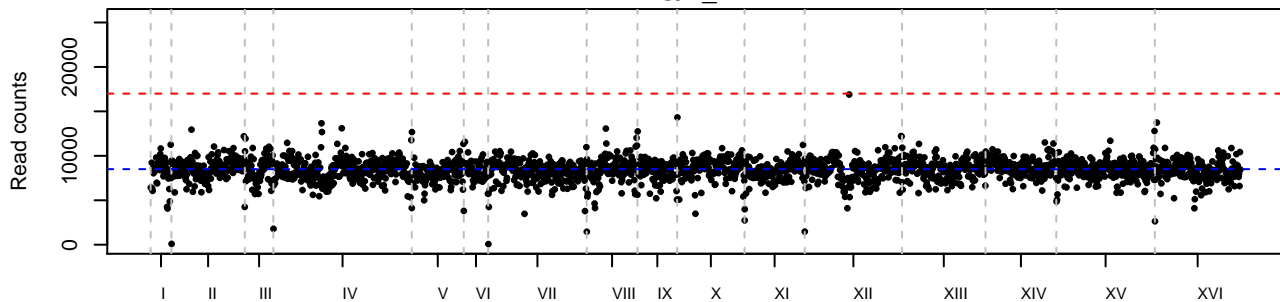
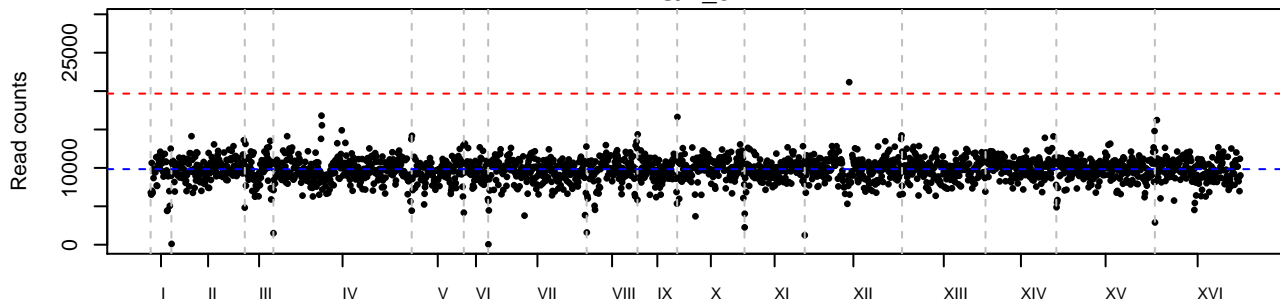
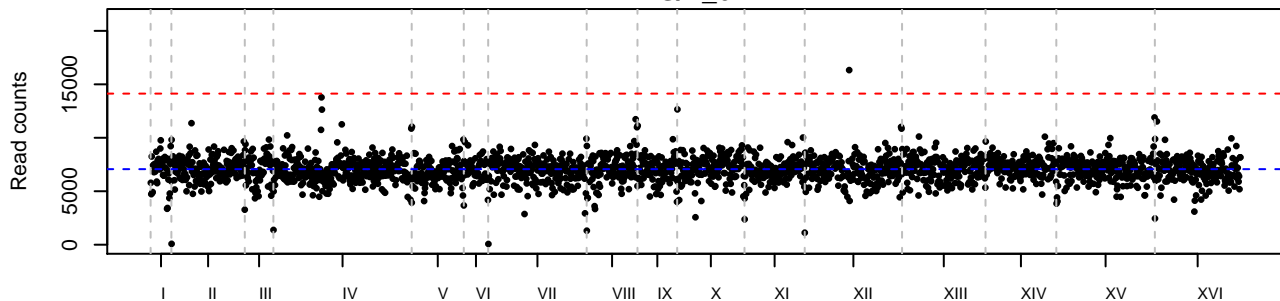
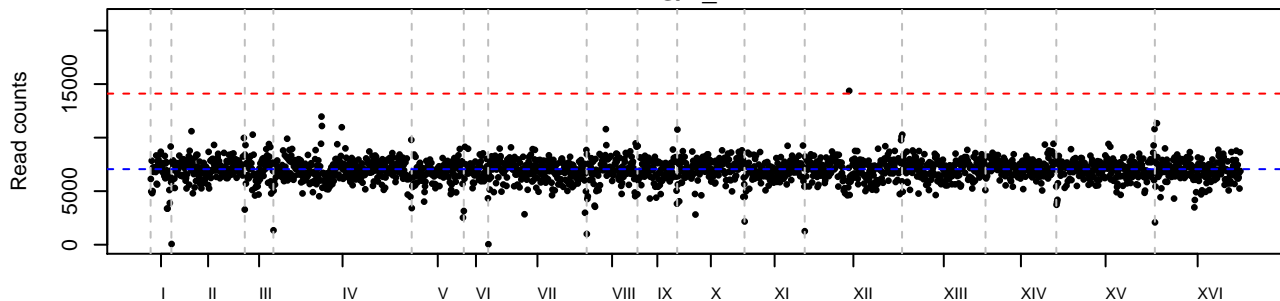
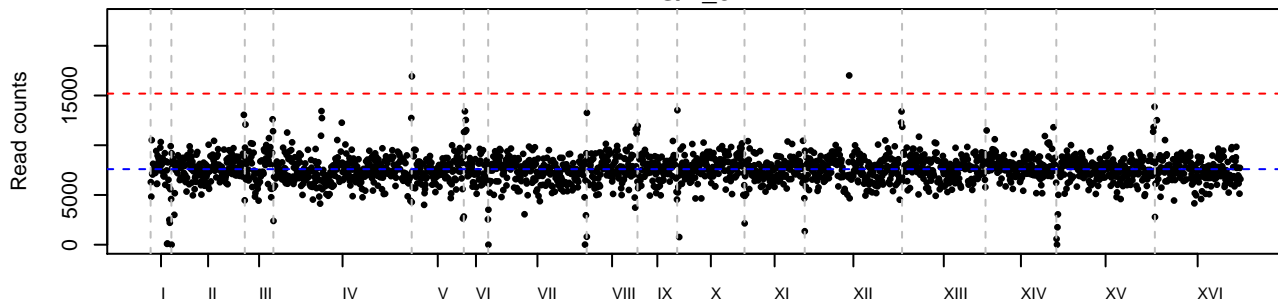


Figure S3. Analysis of read counts mapping to the chromosomes in the MA lines and parent strains. Each dot indicates the total read count in 5 kb bins. Grey vertical lines show chromosomal boundaries. Horizontal blue and red lines show the median and 2x median read counts that map to the chromosomes, respectively.

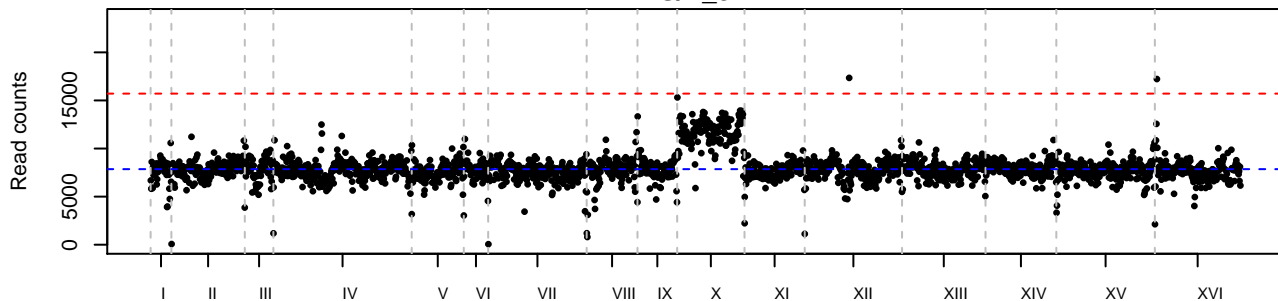


S/Y_4**S/Y_5****S/Y_6****S/Y_7**

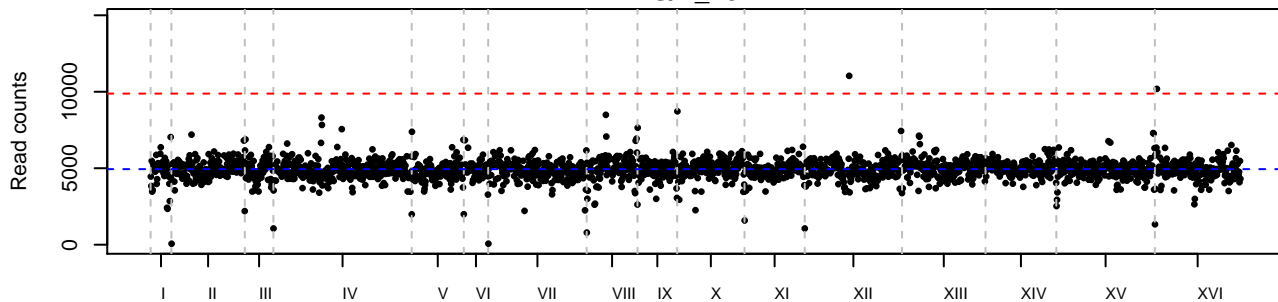
S/Y_8



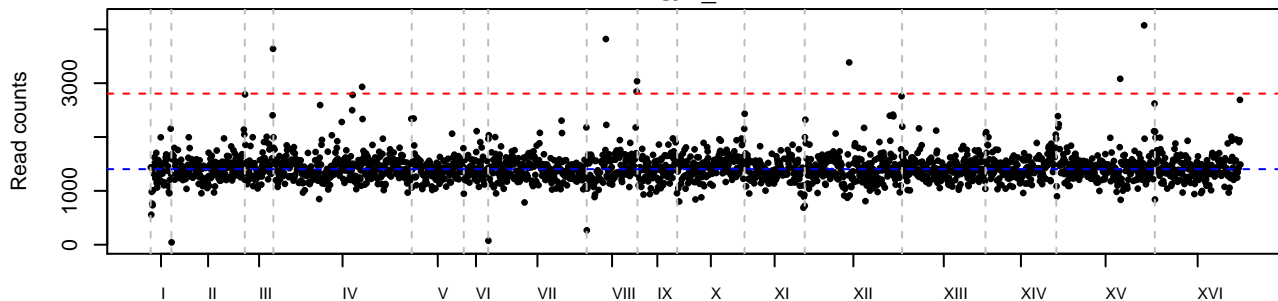
S/Y_9

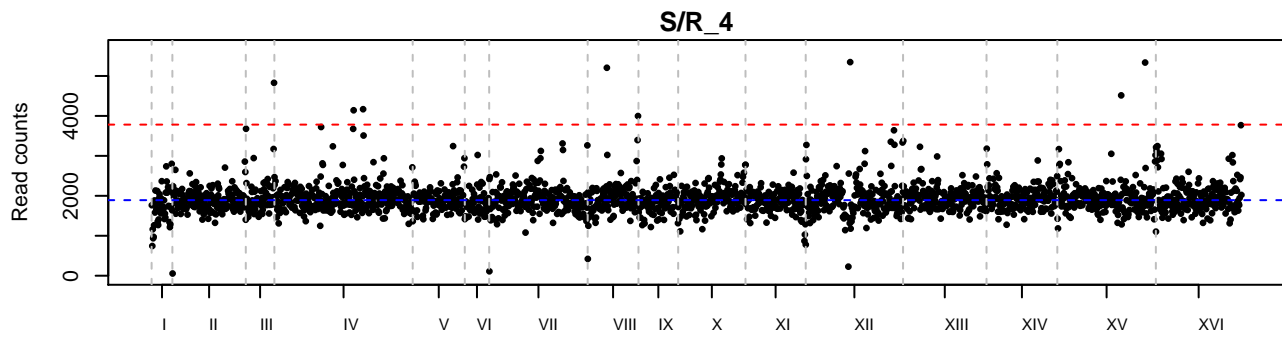
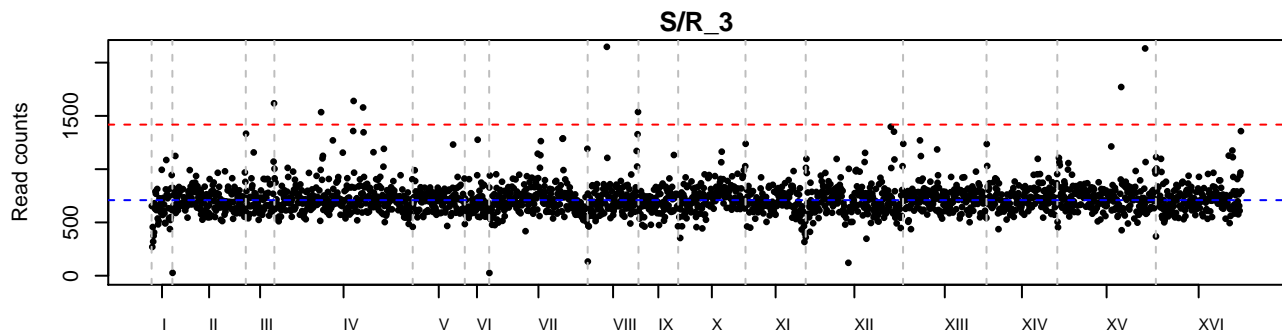
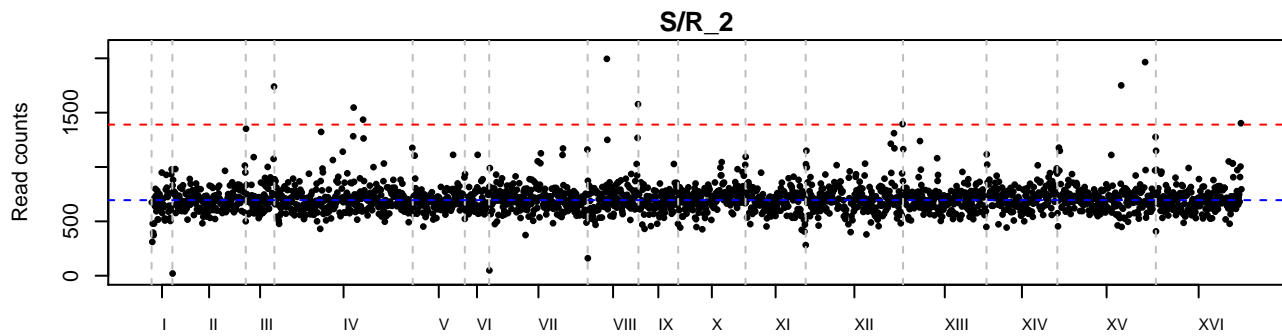
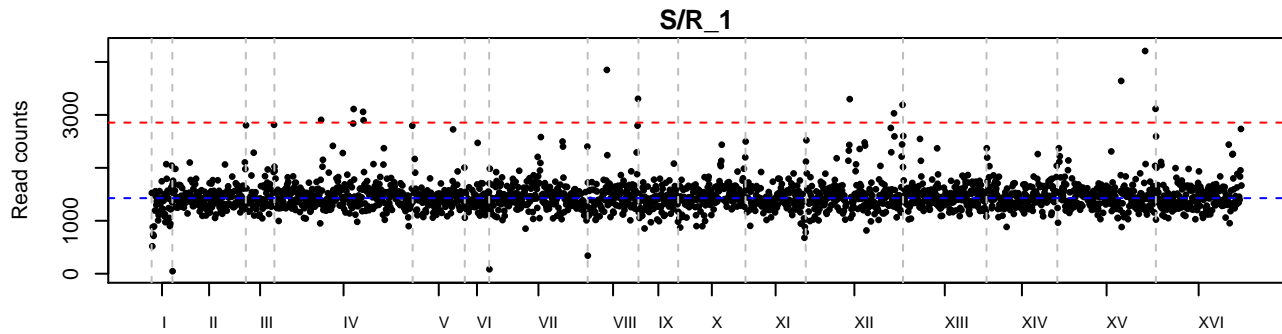


S/Y_10

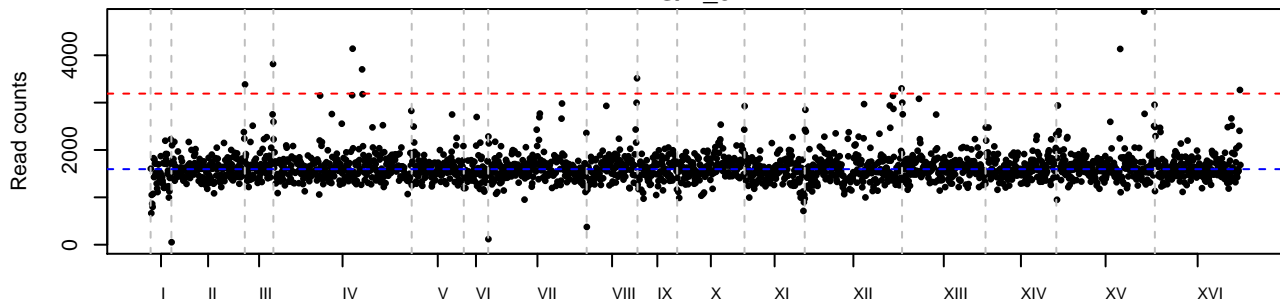


S/R_P

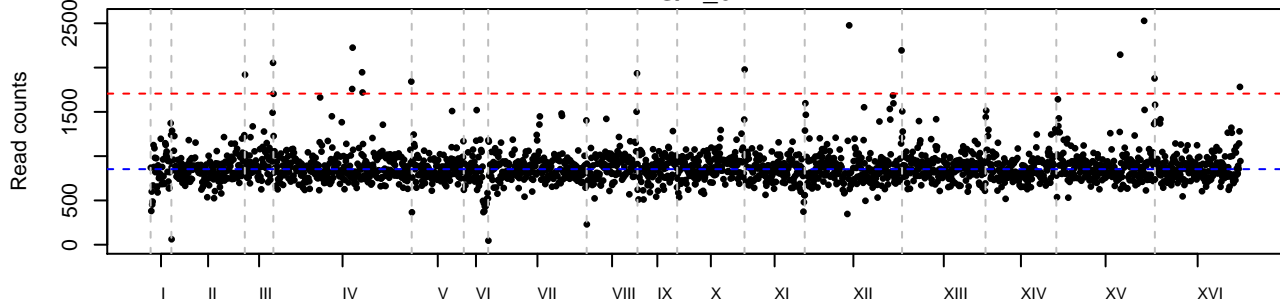




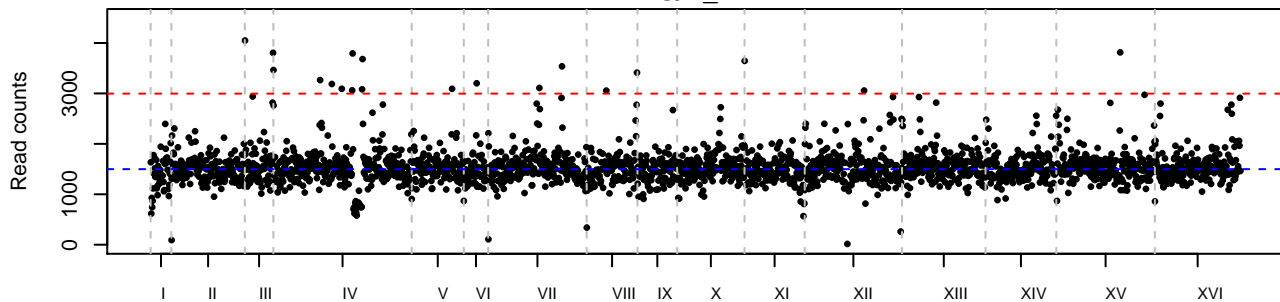
S/R_5



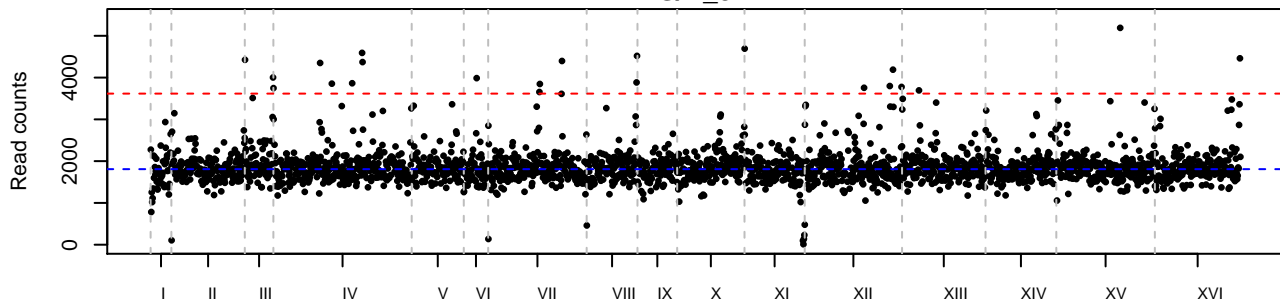
S/R_6

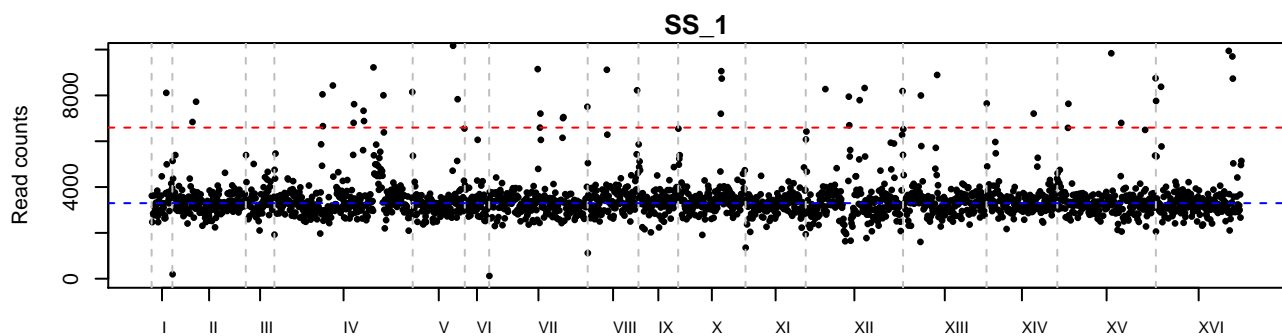
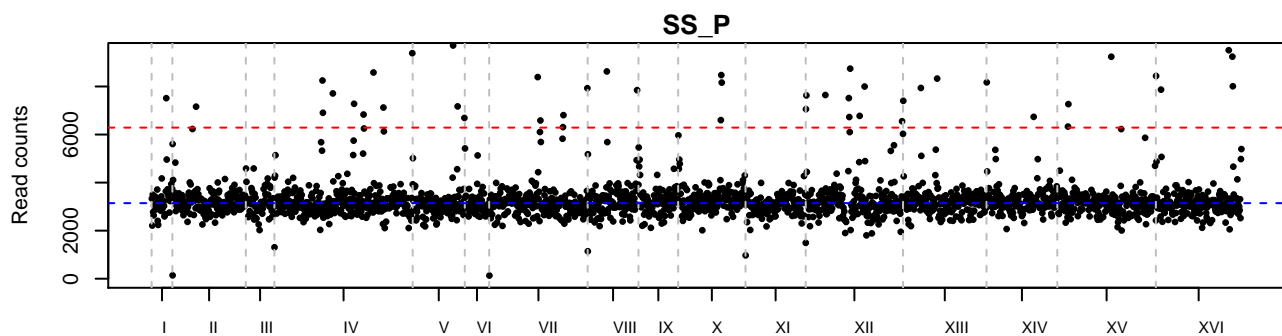
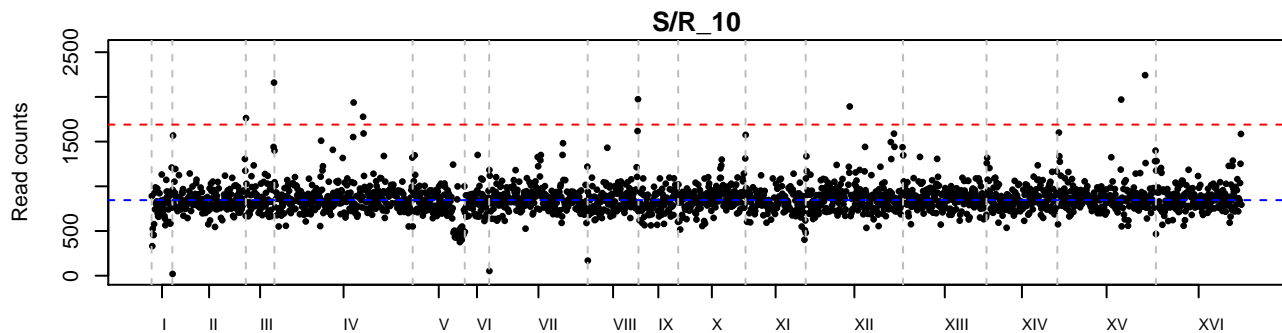
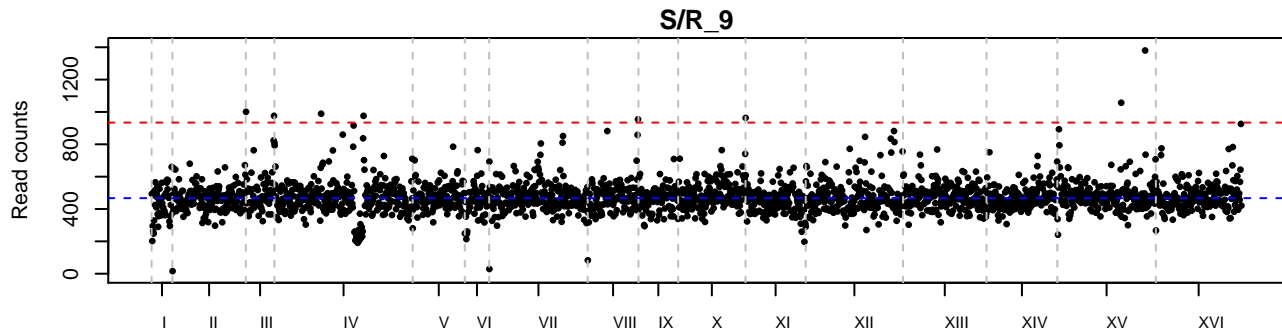


S/R_7

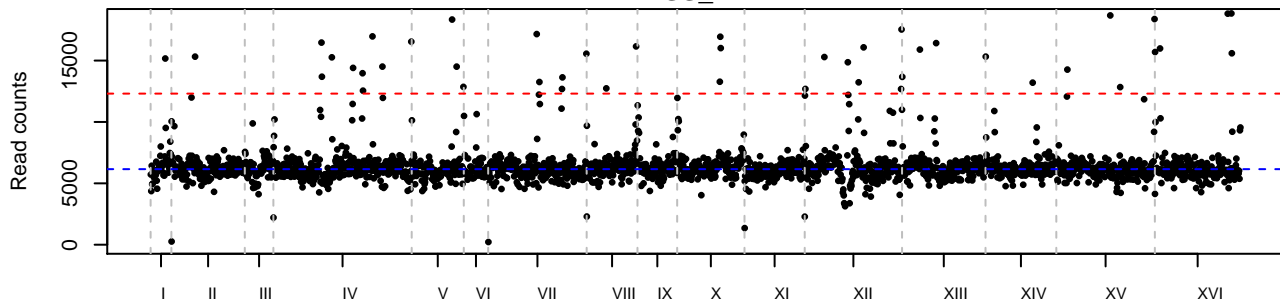


S/R_8

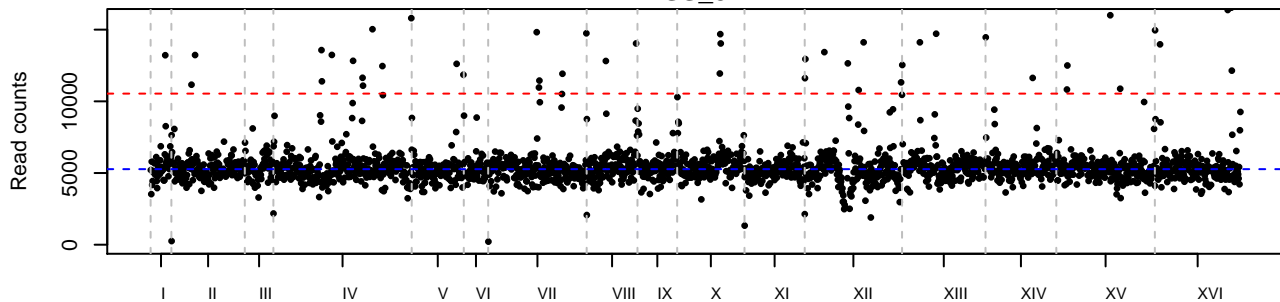




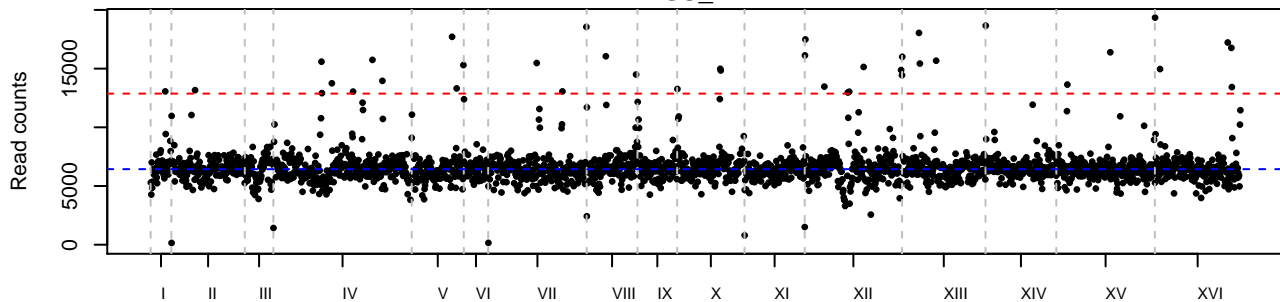
SS_2



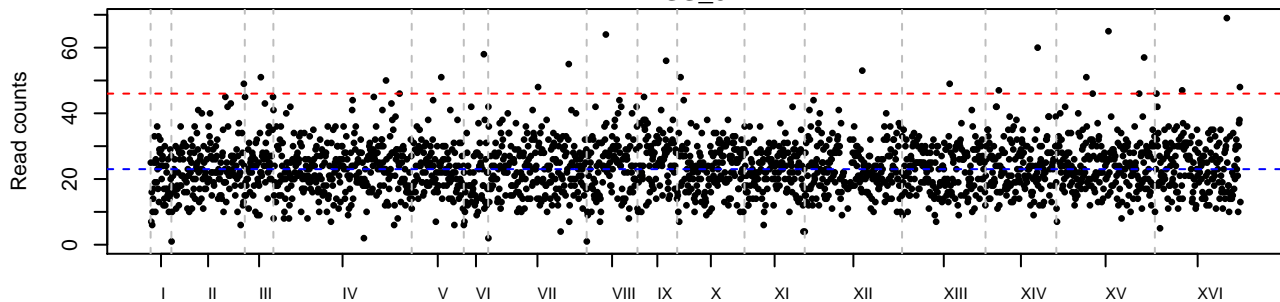
SS_3

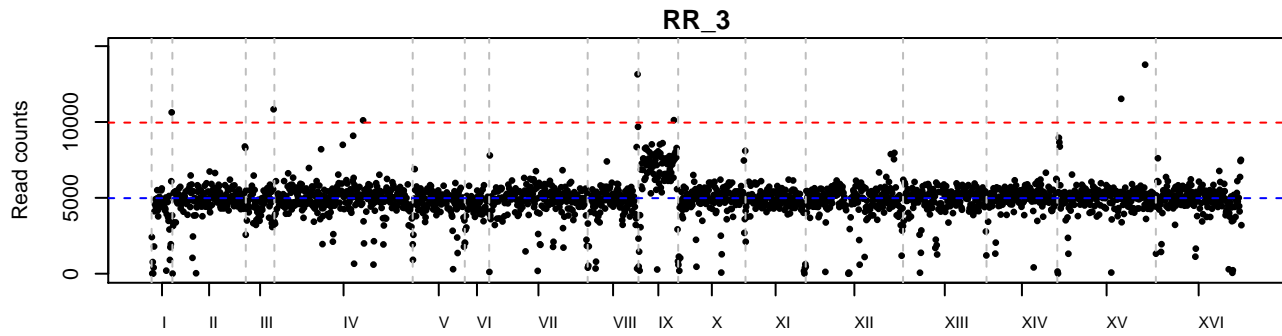
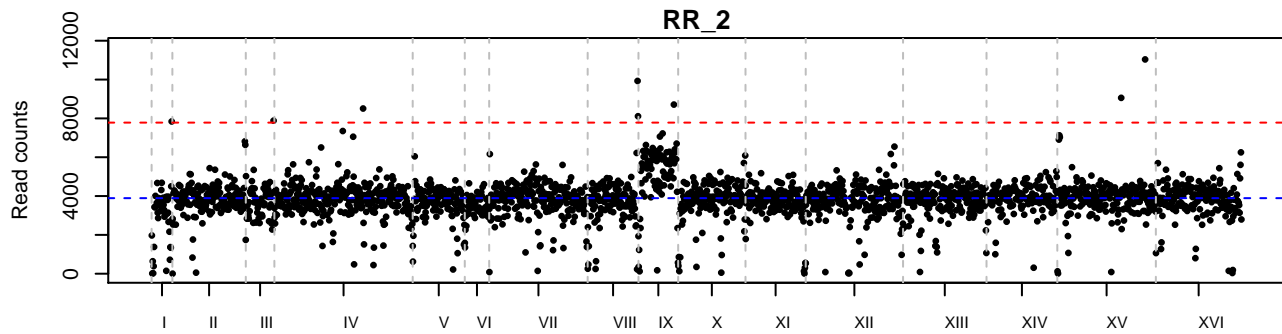
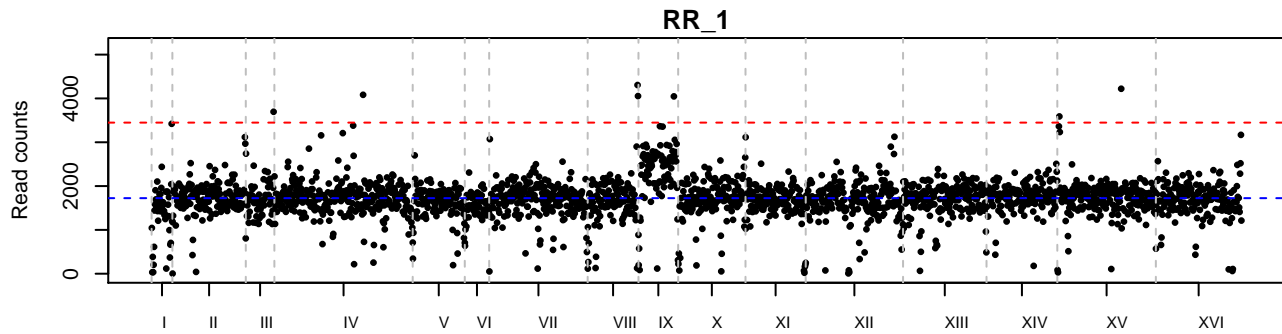
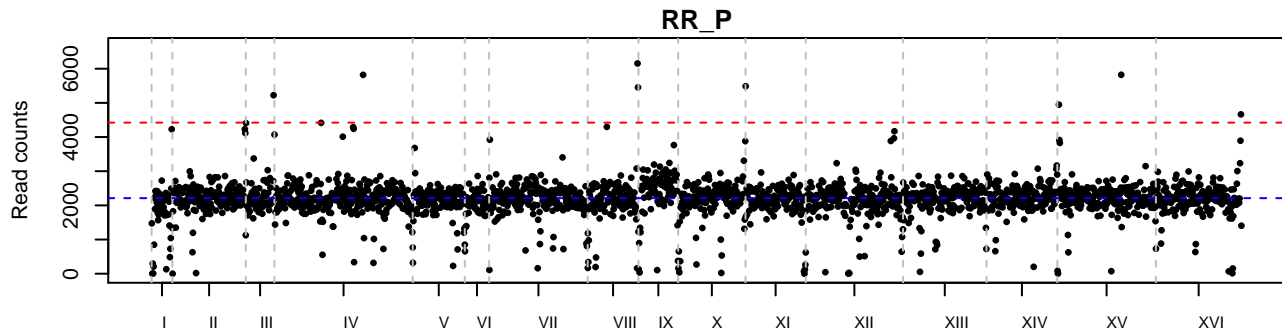


SS_4

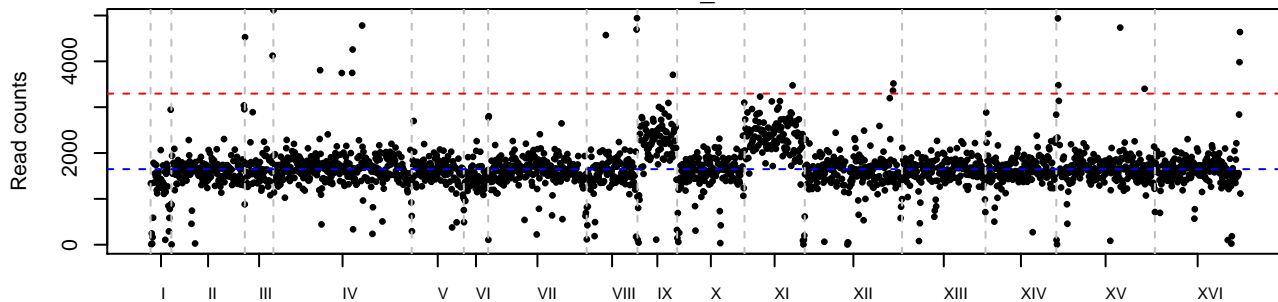


SS_5

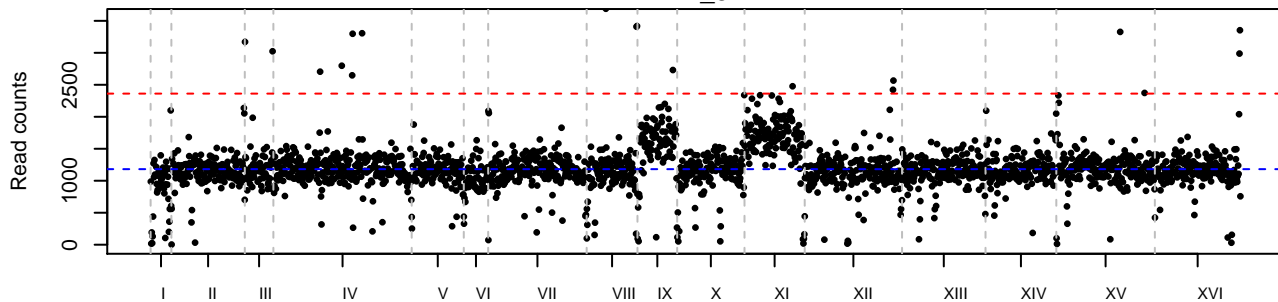




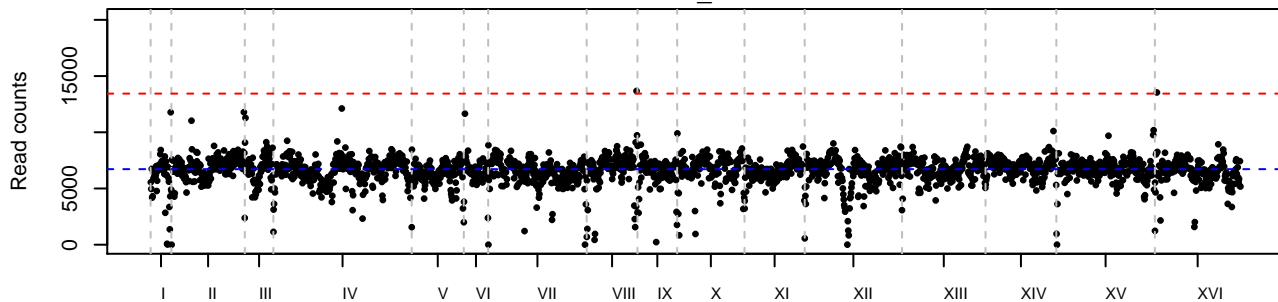
RR_4



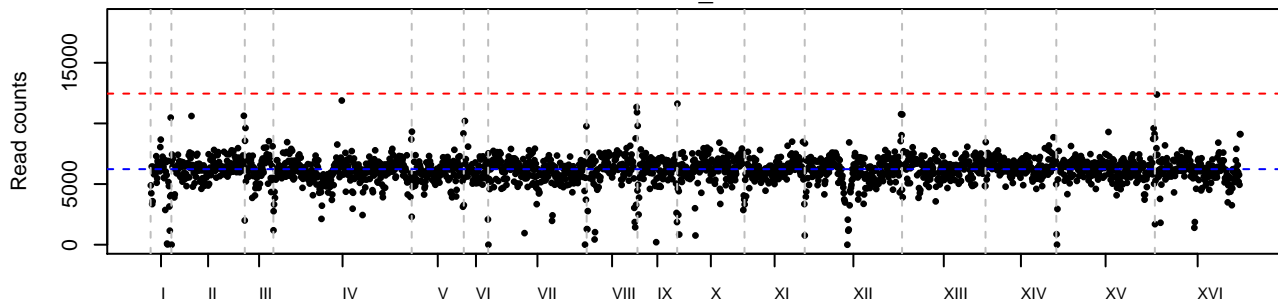
RR_5



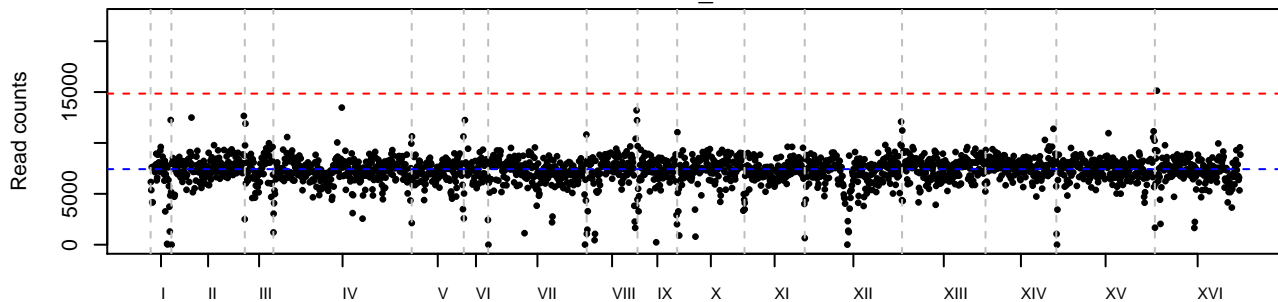
YY_P



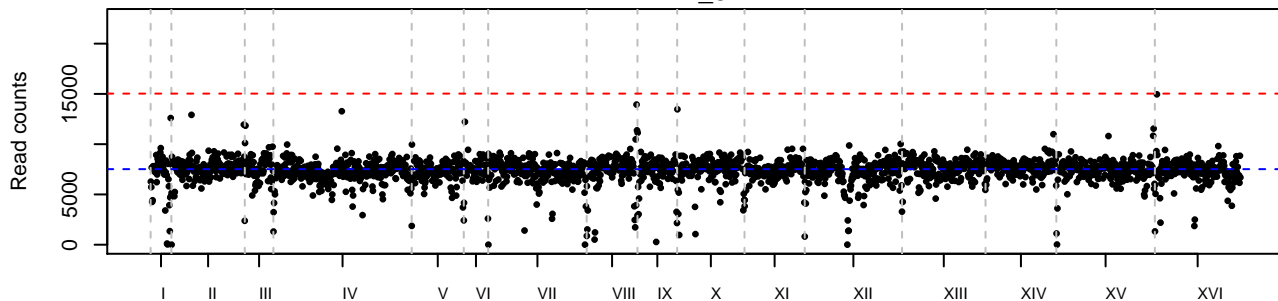
YY_1



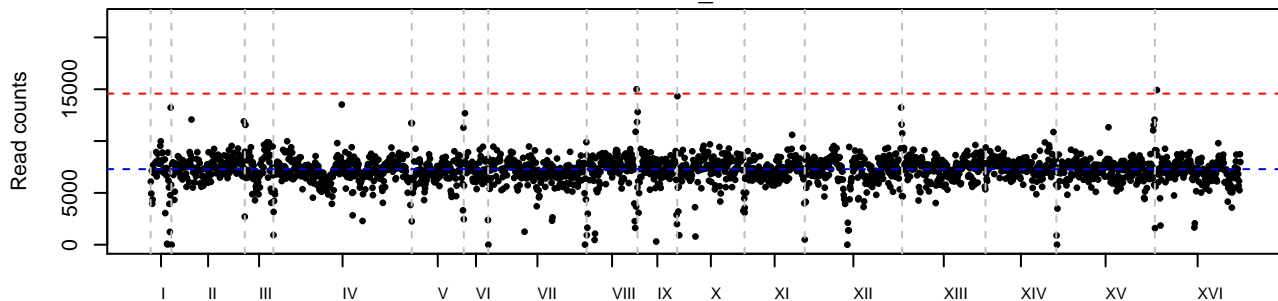
YY_2



YY_3



YY_4



YY_5

