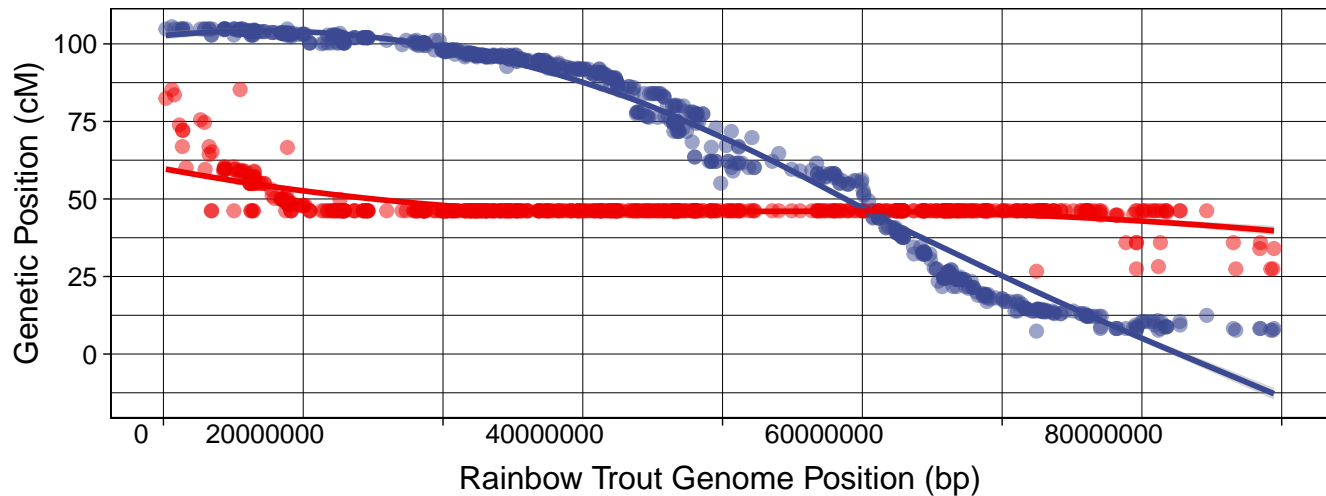
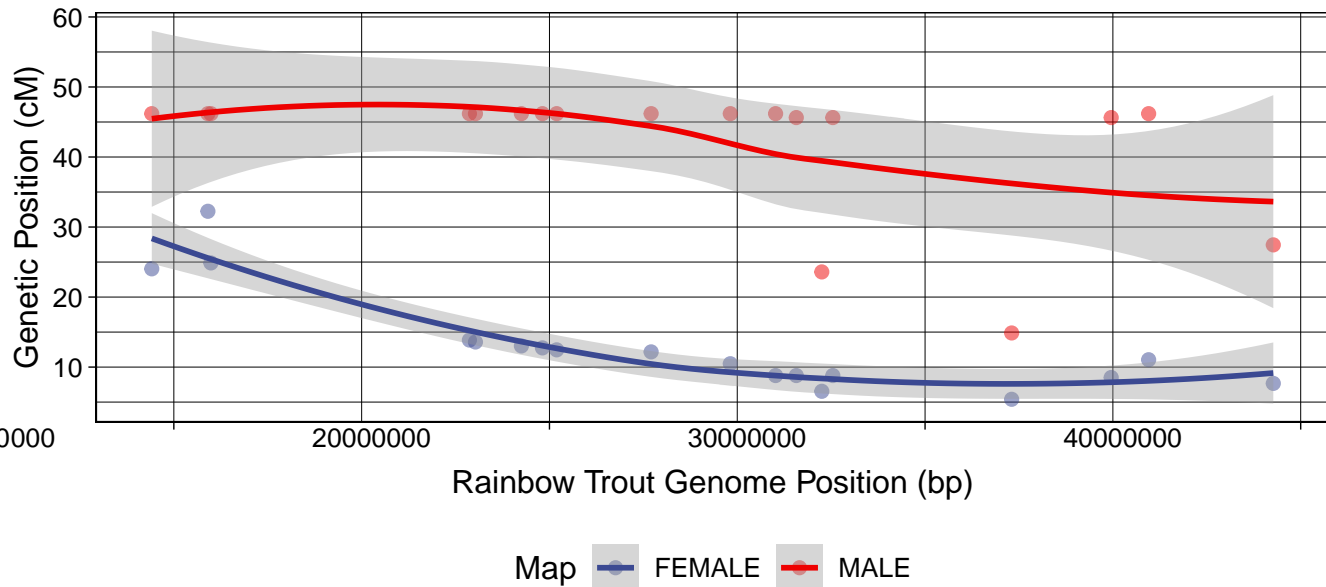


Figure S2: Alignments of male and female lake trout linkage maps to the Rainbow Trout chromosomes. The following figures display the linkage map position on the Y-axis and the chromosomal position on the X-axis for the two chromosomes with the most alignments for a given linkage group. Figure headings list the lake trout linkage group first (sna1-42) and the Rainbow Trout chromosome to which they align second. The male linkage map is displayed in red and the female linkage map is displayed in blue.

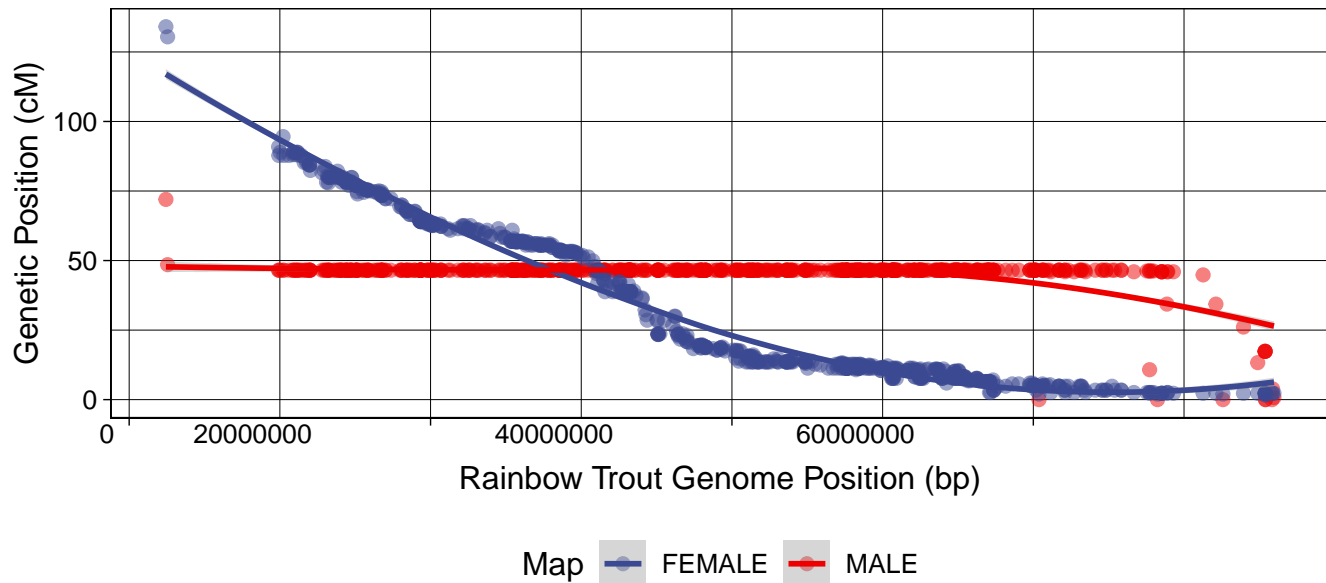
sna1 vs. omy6



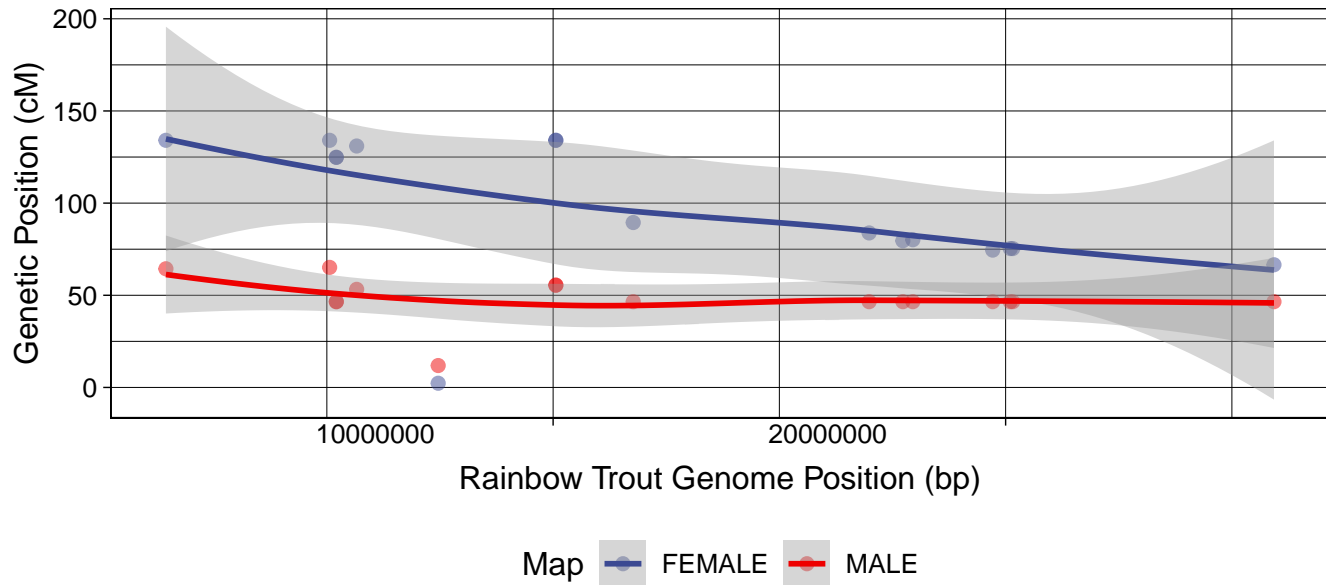
sna1 vs. omy26



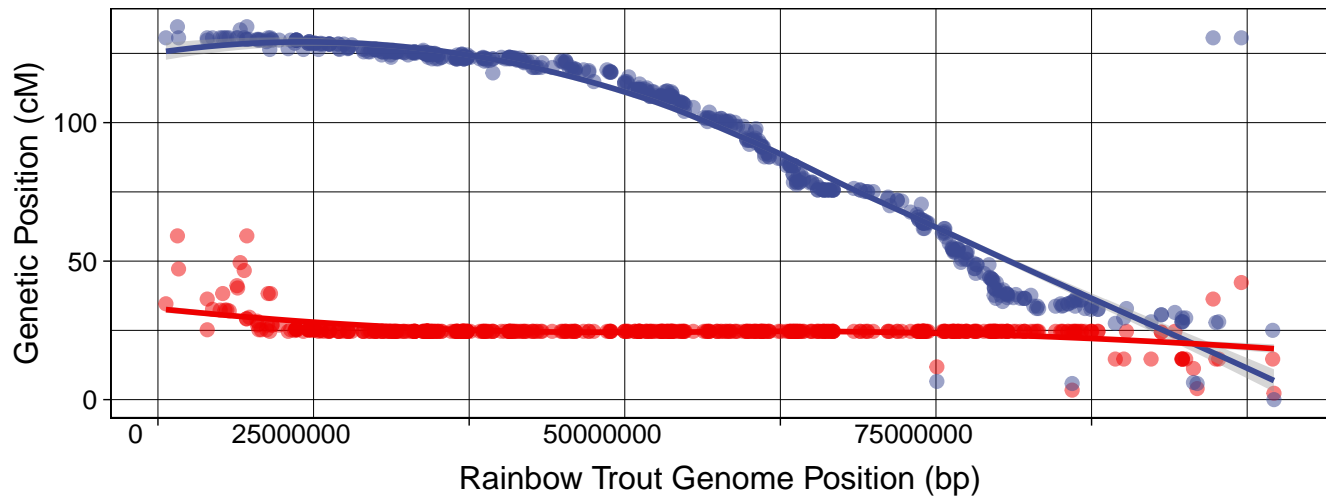
sna2 vs. omy17



sna2 vs. omy13

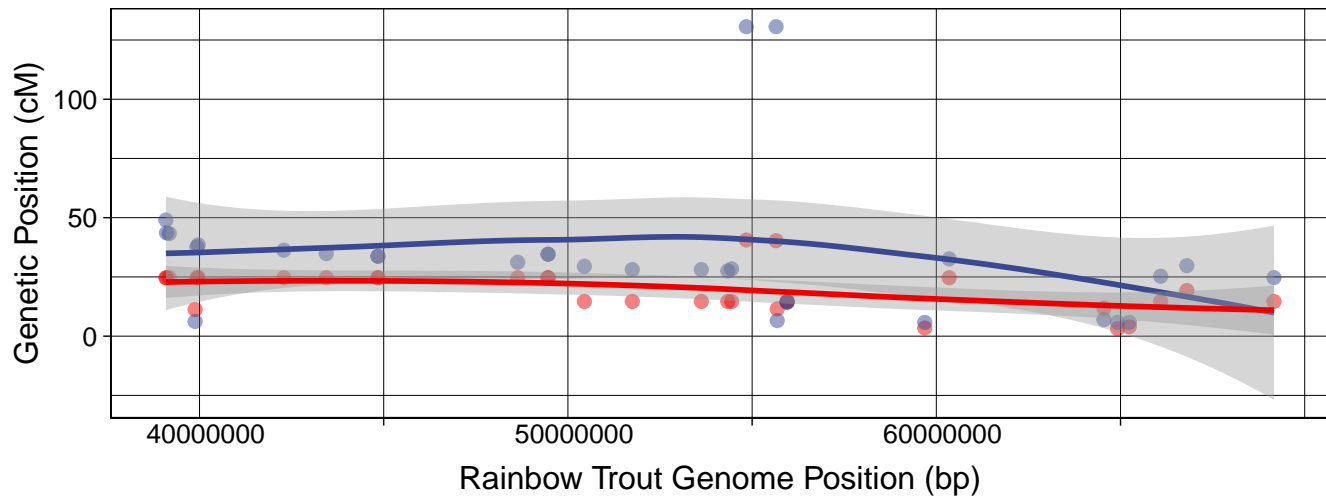


sna3 vs. omy12



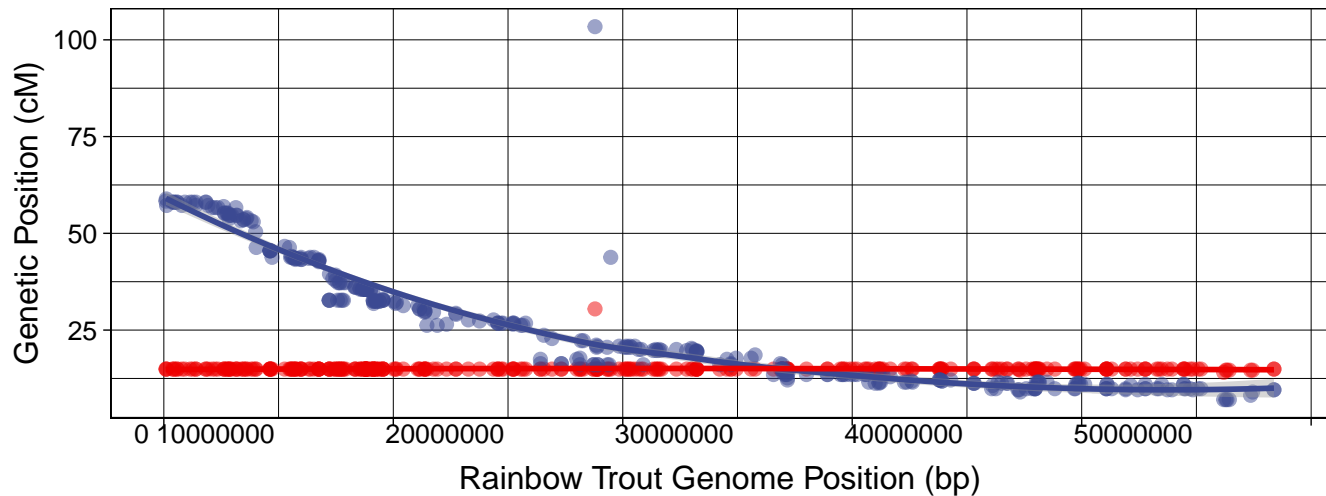
Map  FEMALE  MALE

sna3 vs. omy13

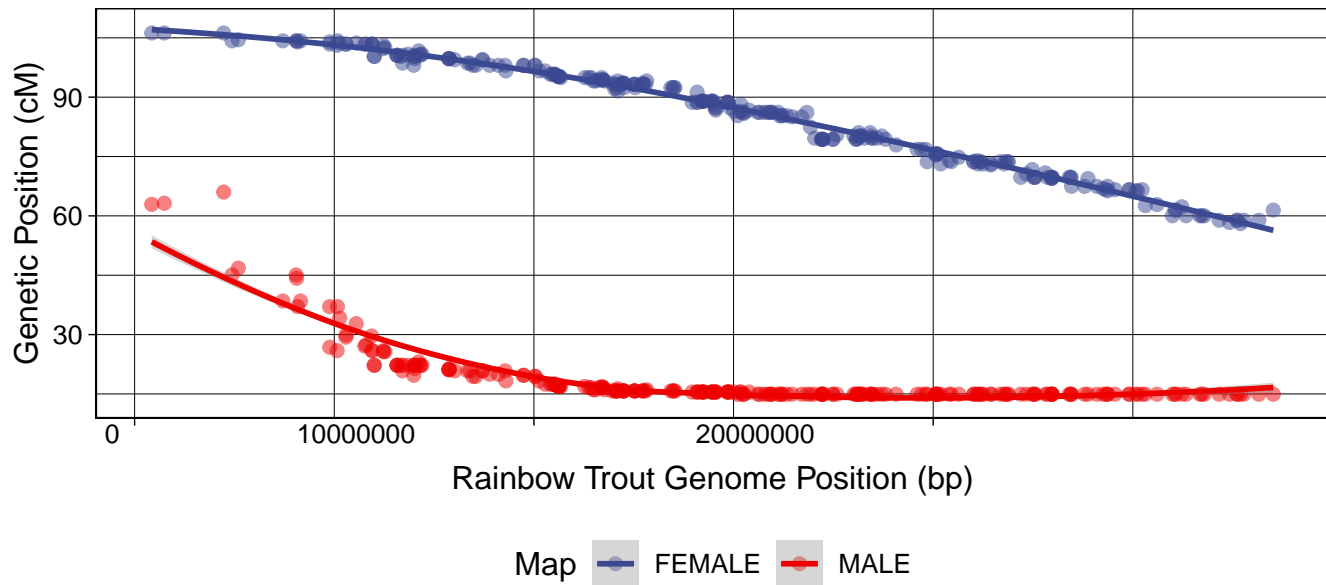


Map  FEMALE  MALE

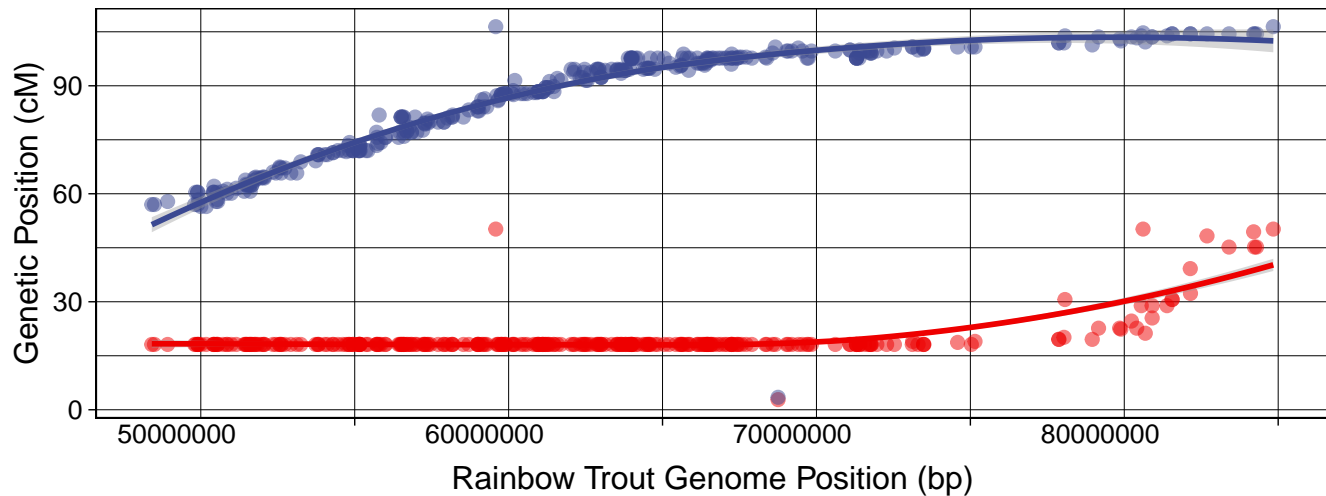
sna4 vs. omy23



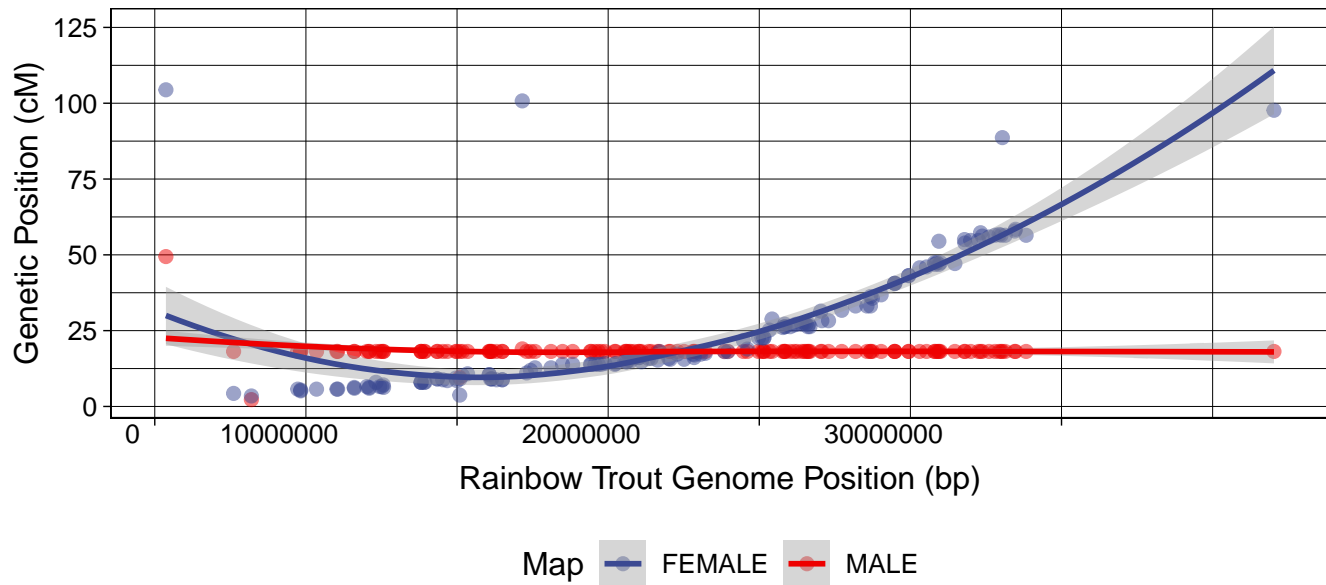
sna4 vs. omy16



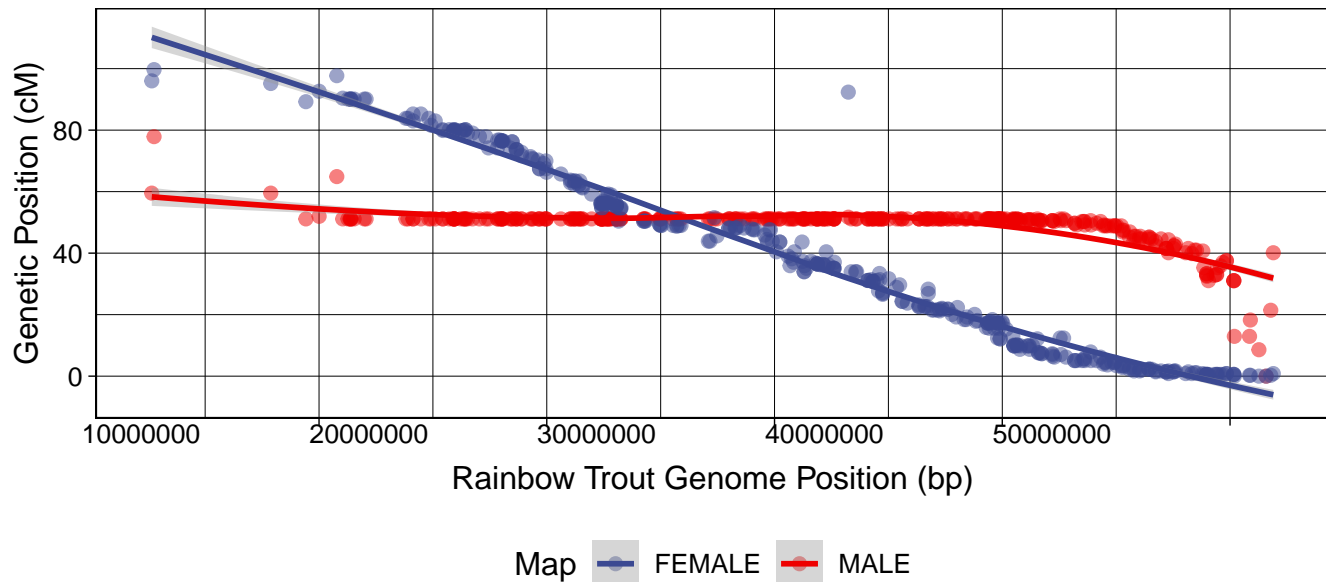
sna5 vs. omy14



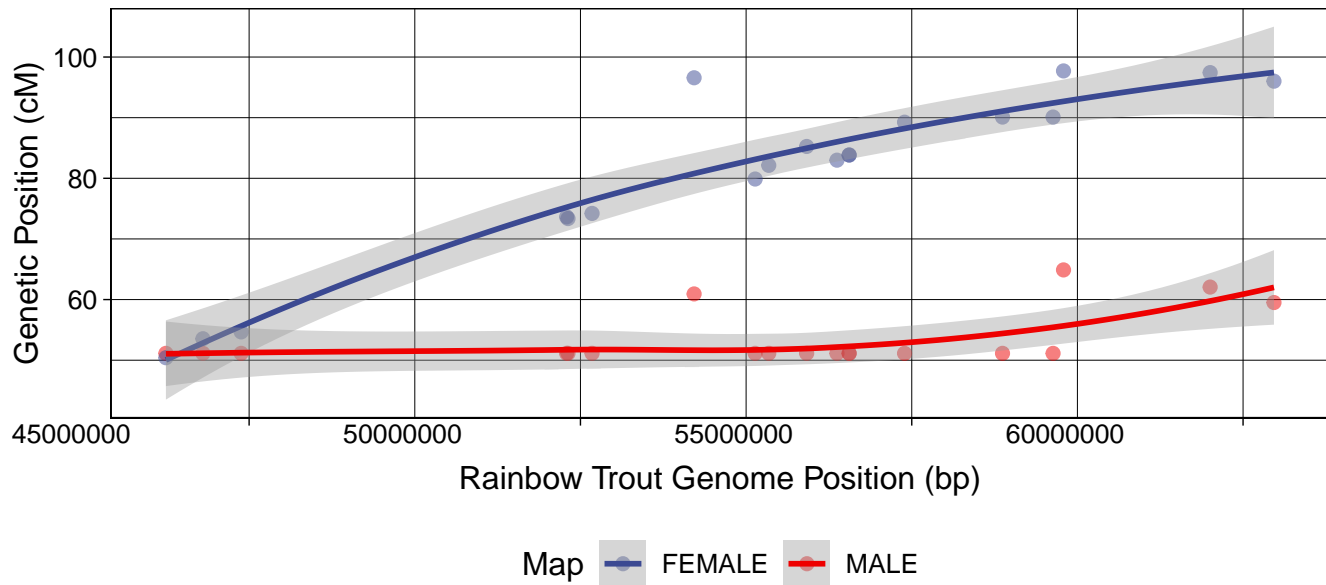
sna5 vs. omy2



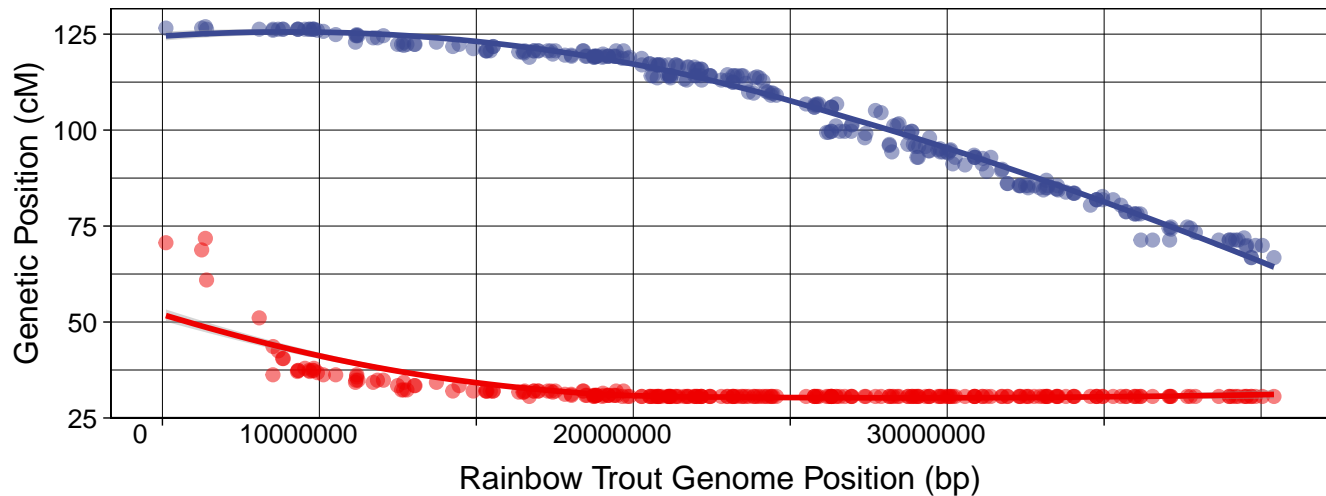
sna6 vs. omy21



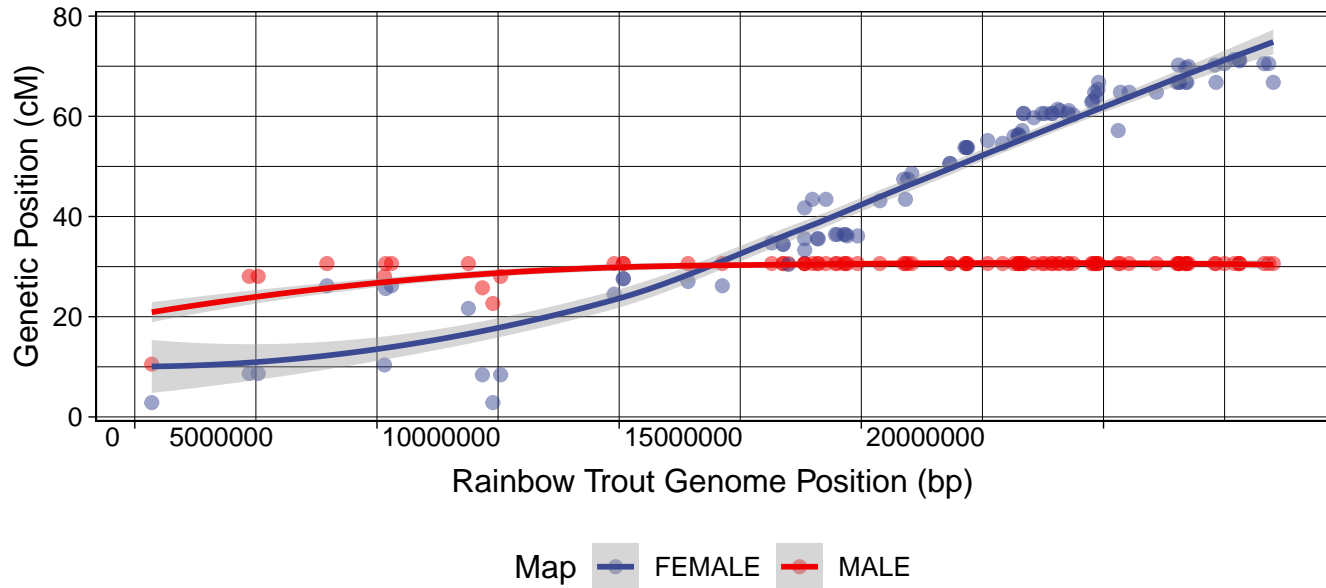
sna6 vs. omy15



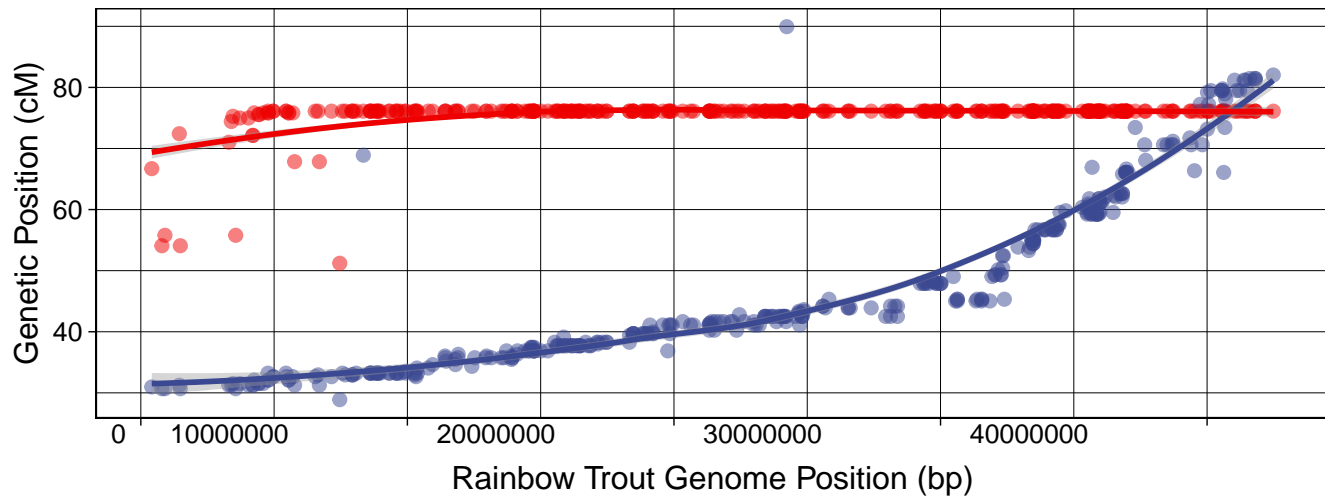
sna7 vs. omy15



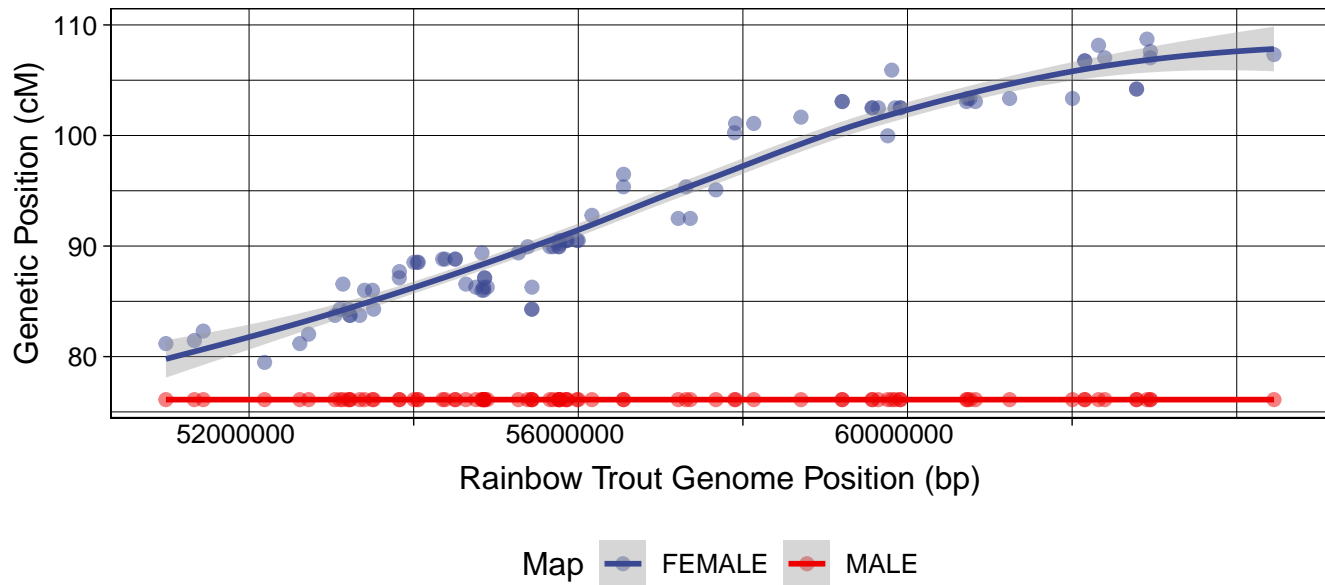
sna7 vs. omy18



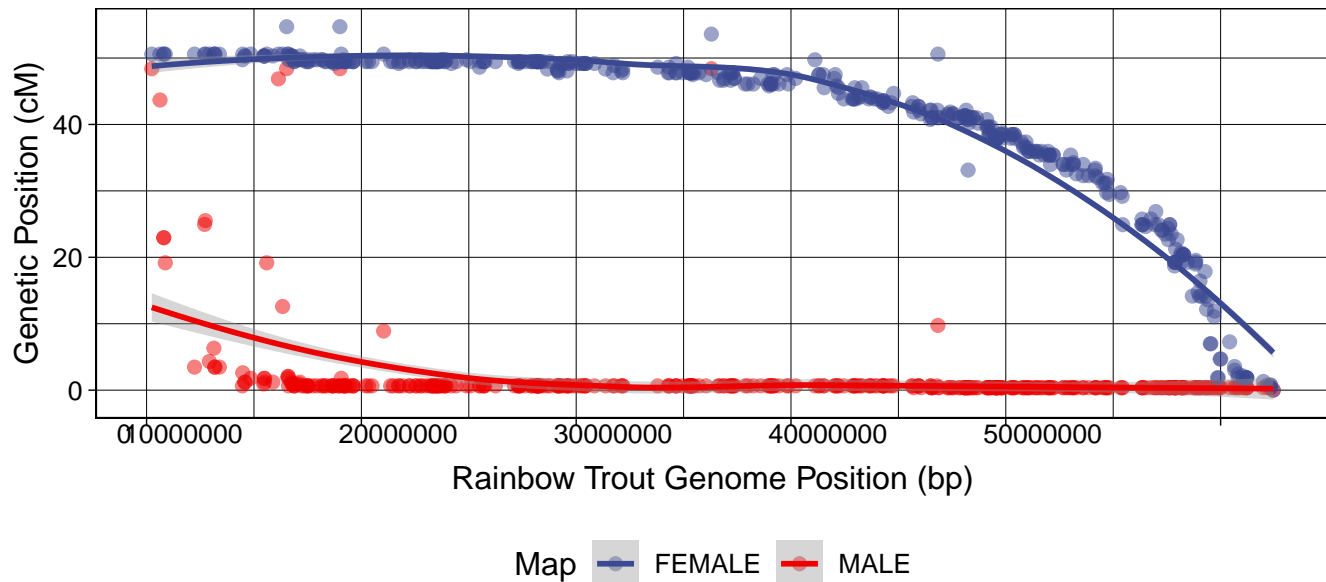
sna8 vs. omy4



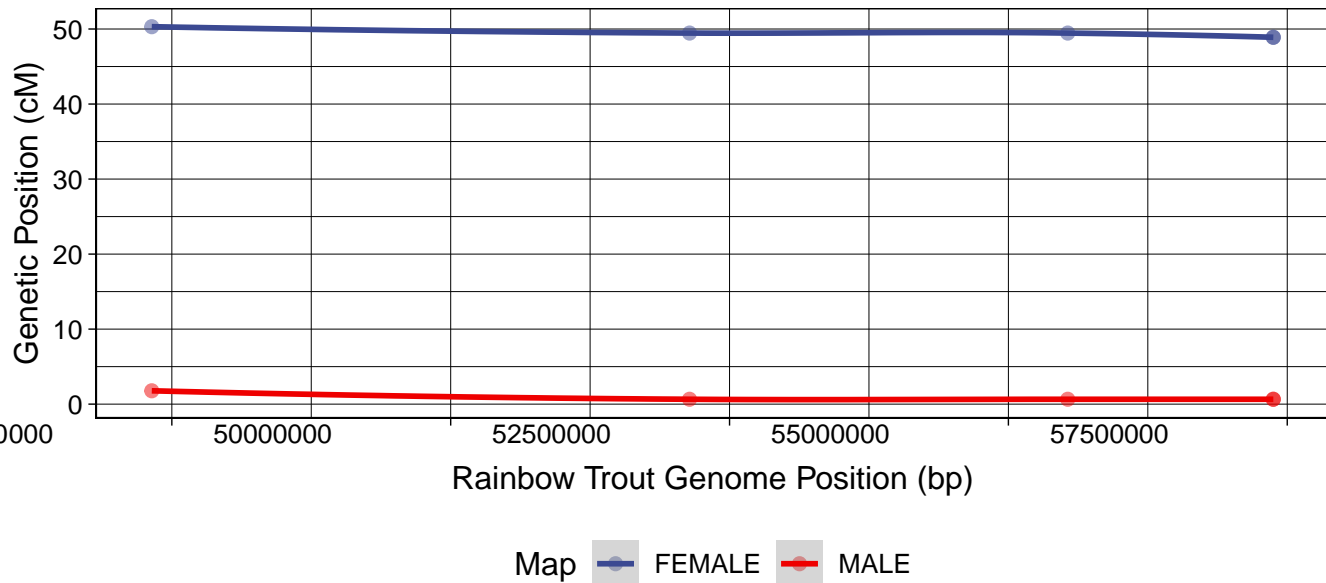
sna8 vs. omy10



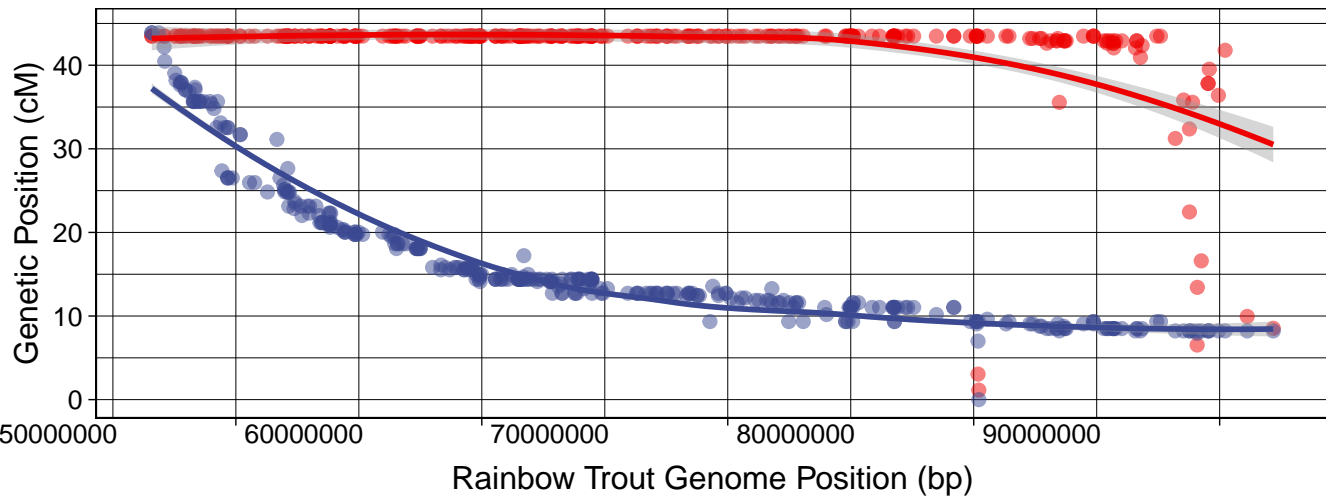
sna9 vs. omy1



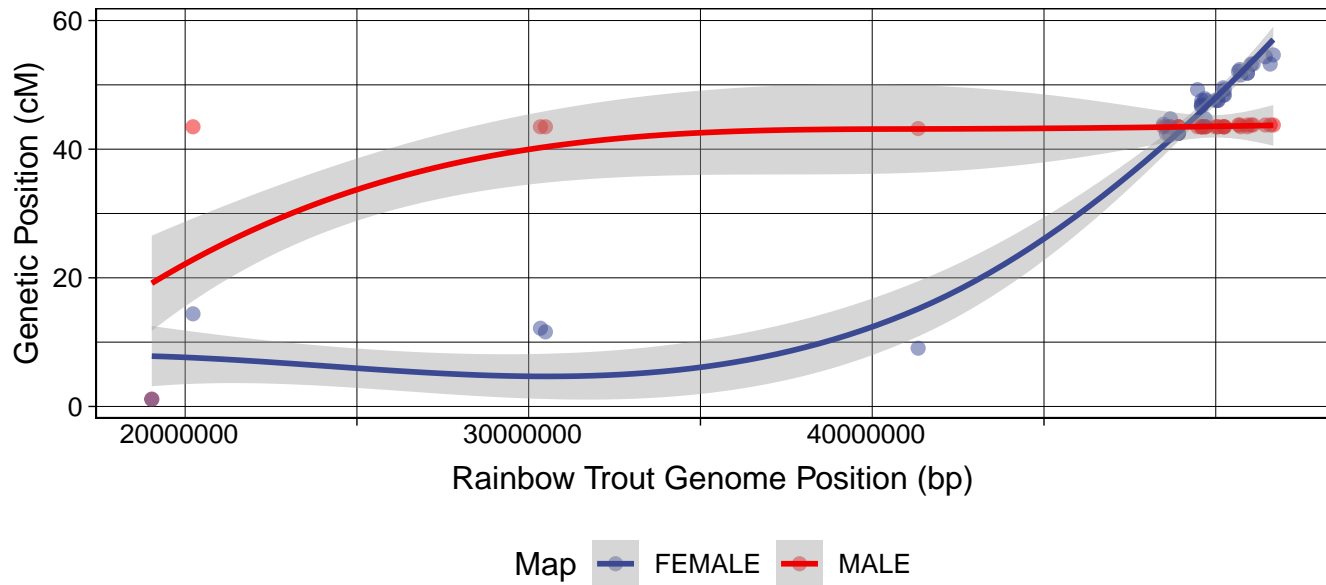
sna9 vs. omy5



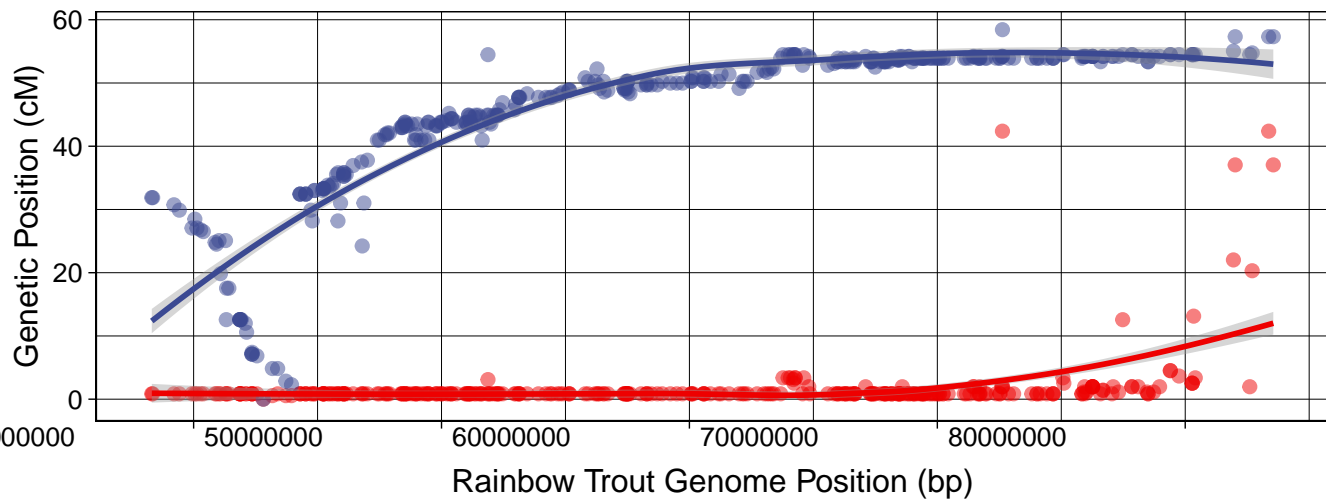
sna10 vs. omy5



sna10 vs. omy4

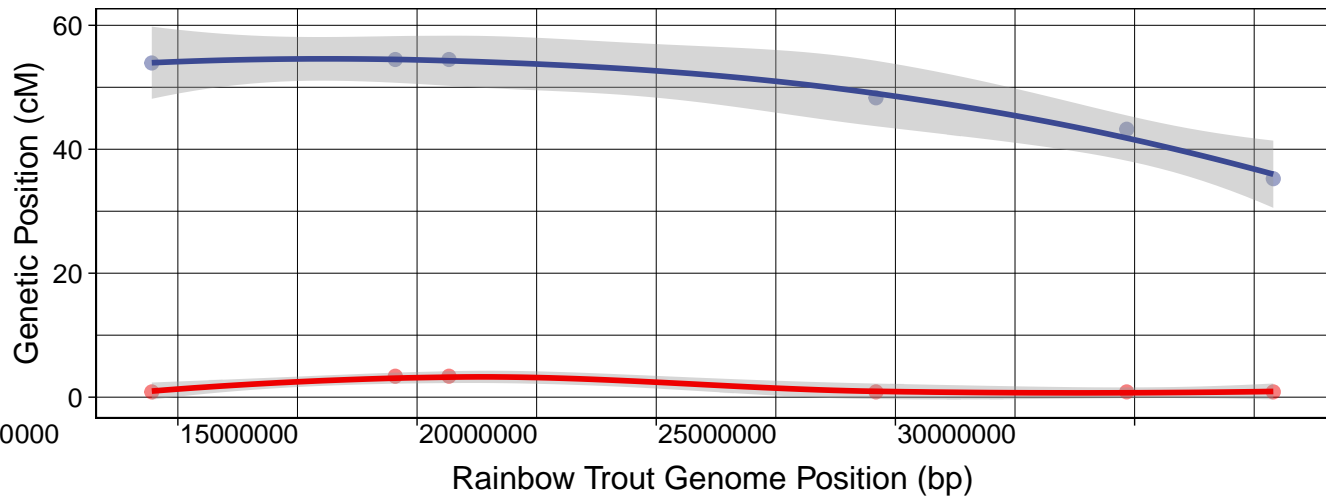


sna11 vs. omy8



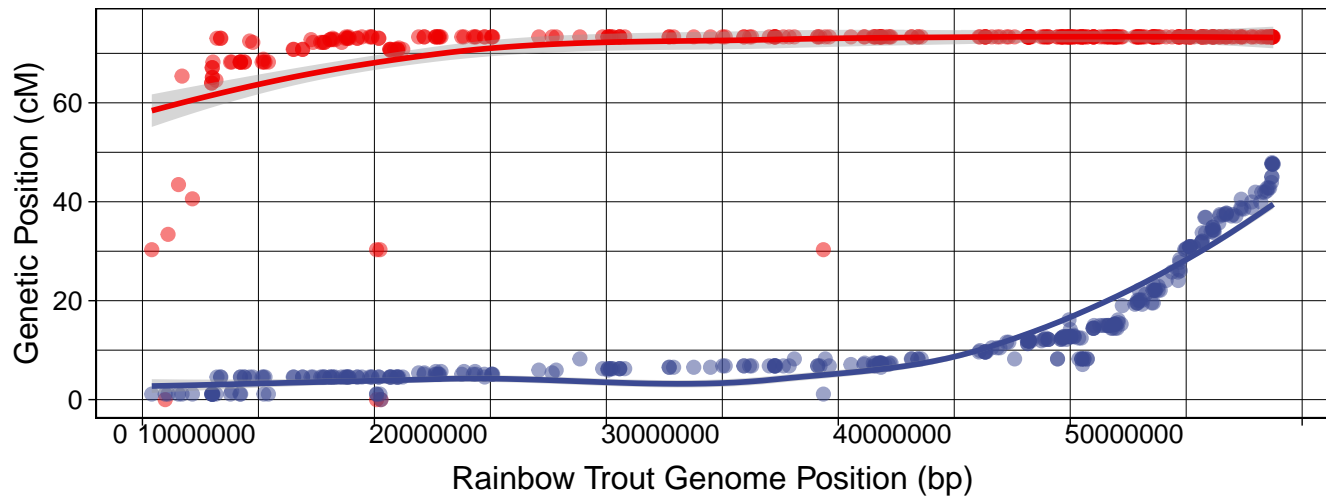
Map  FEMALE  MALE

sna11 vs. omy28

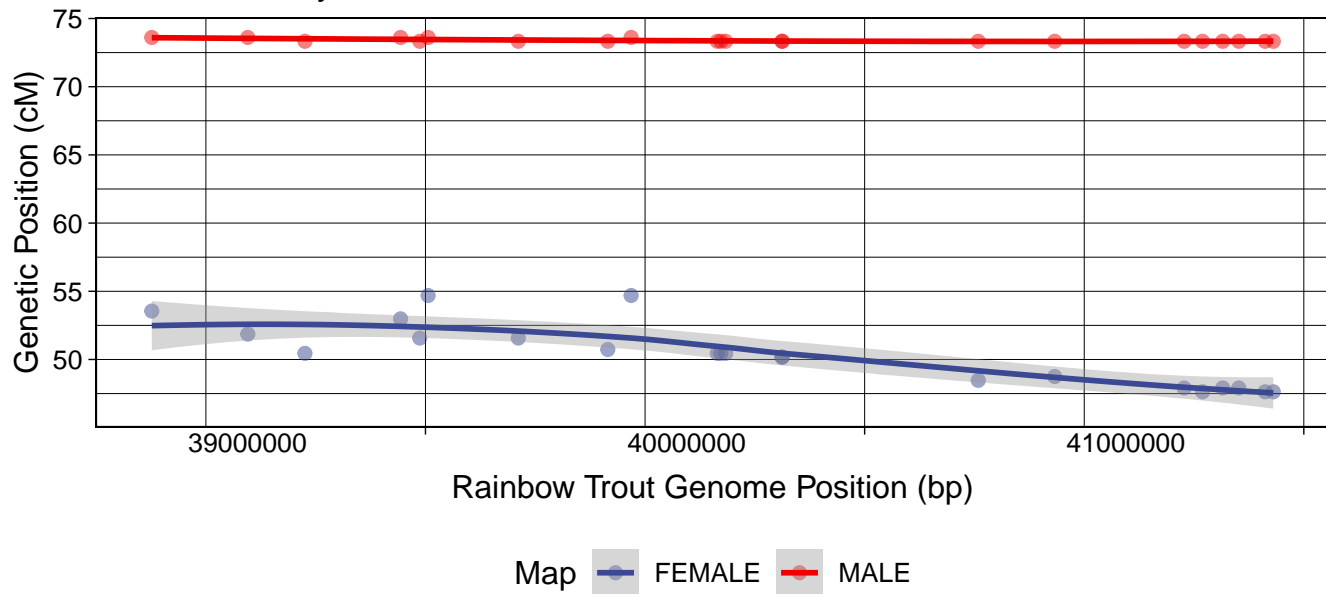


Map  FEMALE  MALE

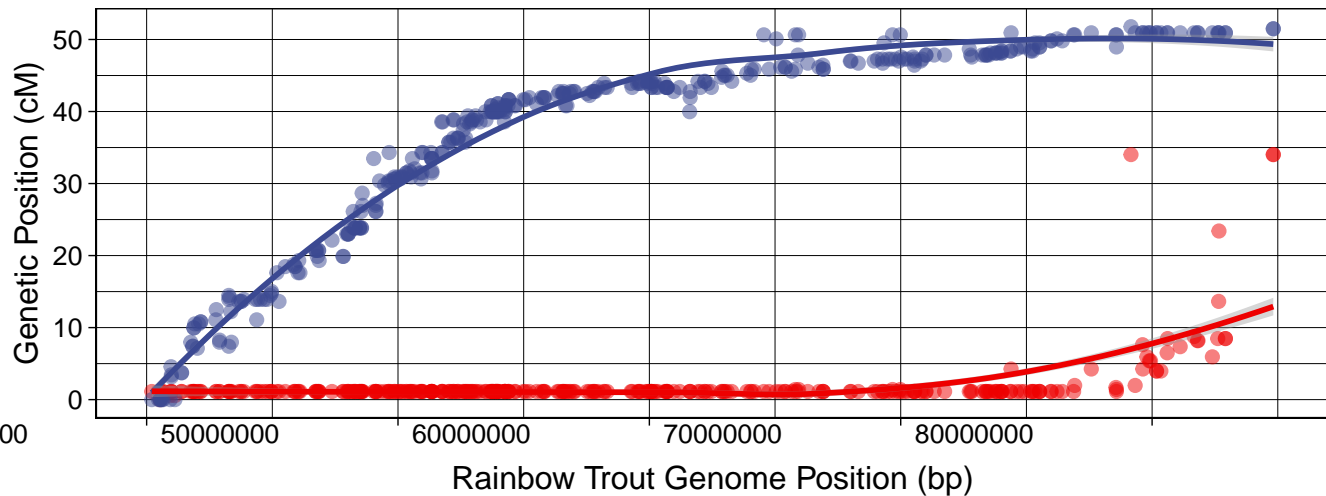
sna12 vs. omy10



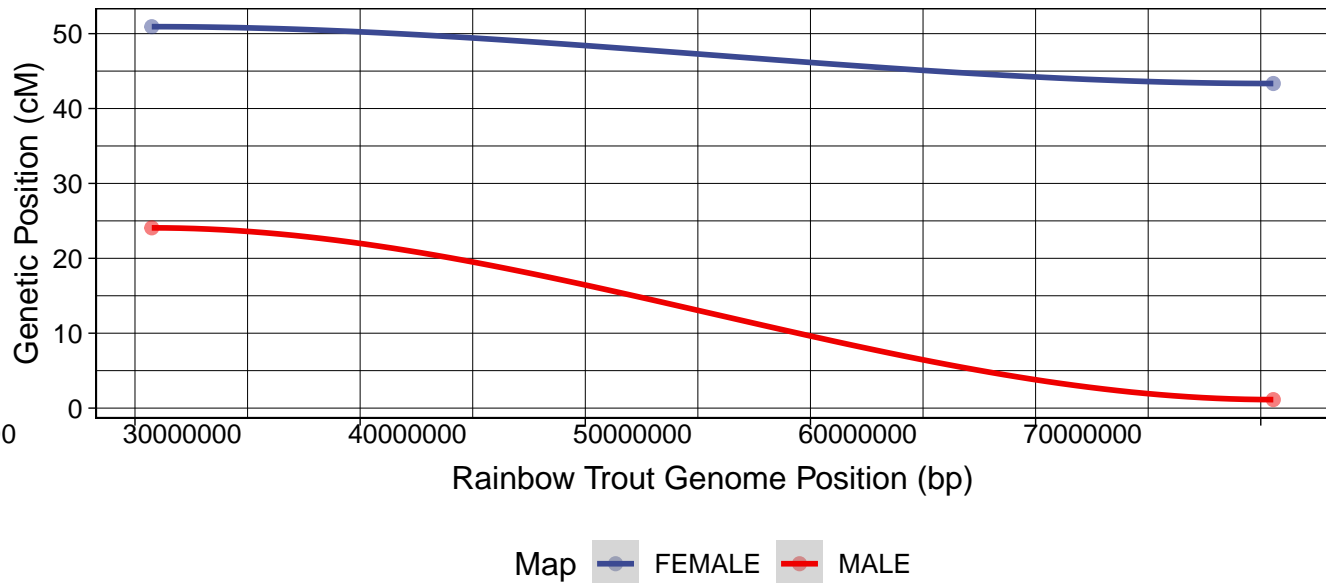
sna12 vs. omy15



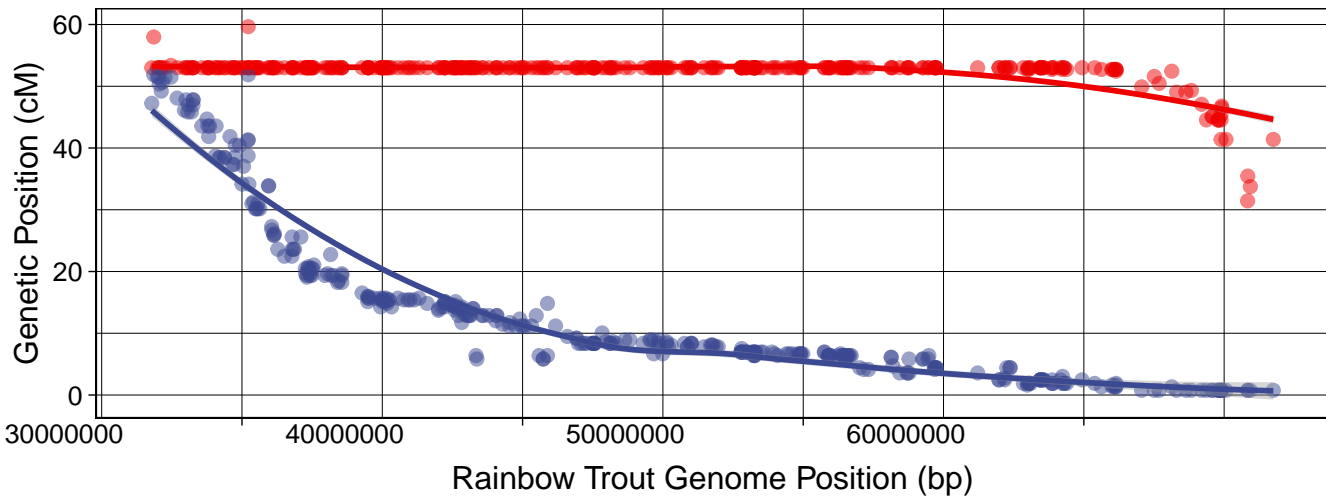
sna13 vs. omy3



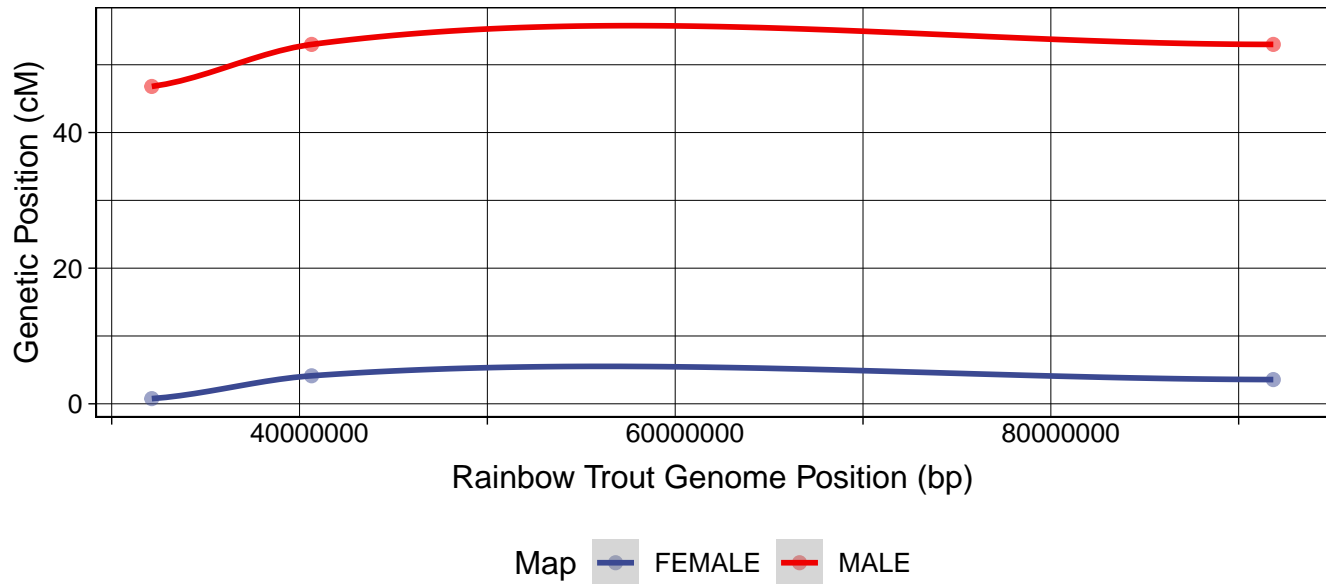
sna13 vs. omyUn3



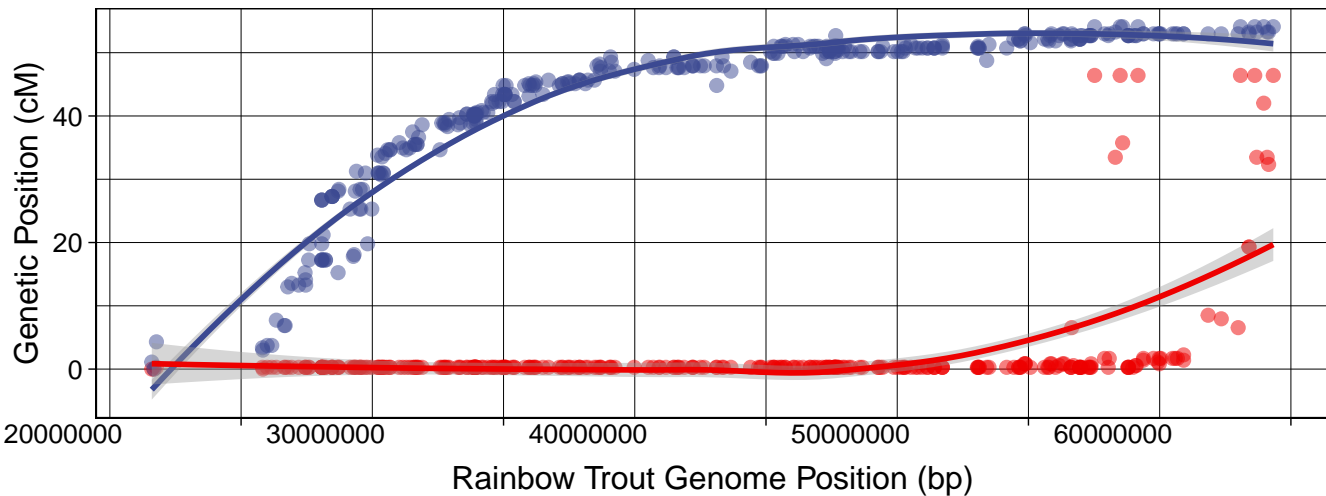
sna14 vs. omy9



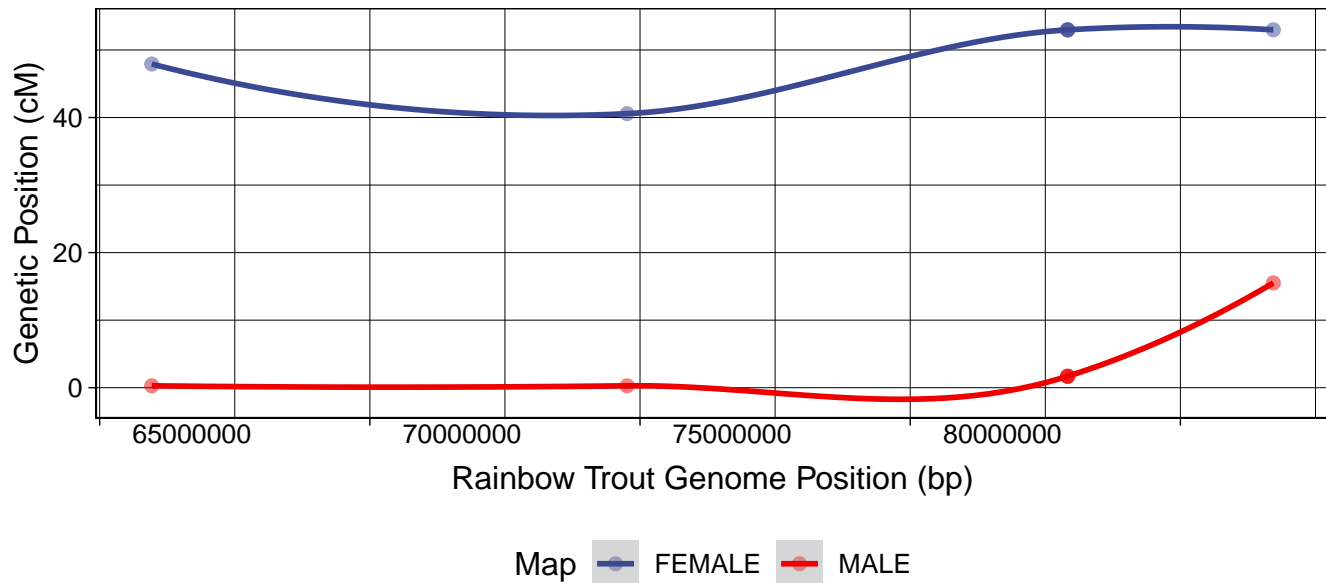
sna14 vs. omyUn3



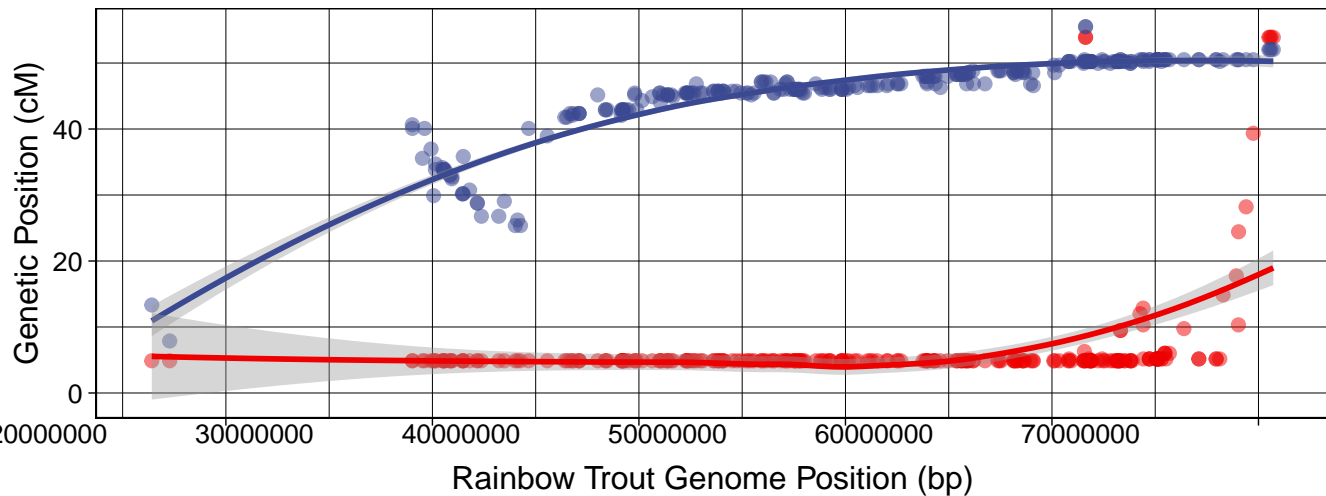
sna15 vs. omy19



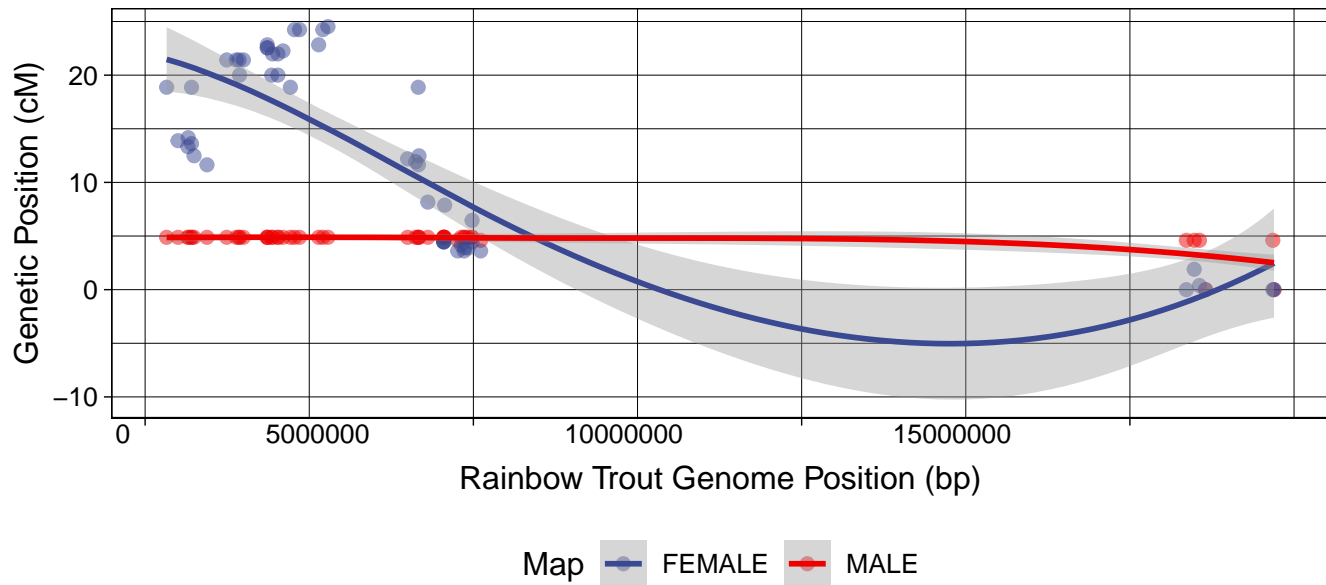
sna15 vs. omy25



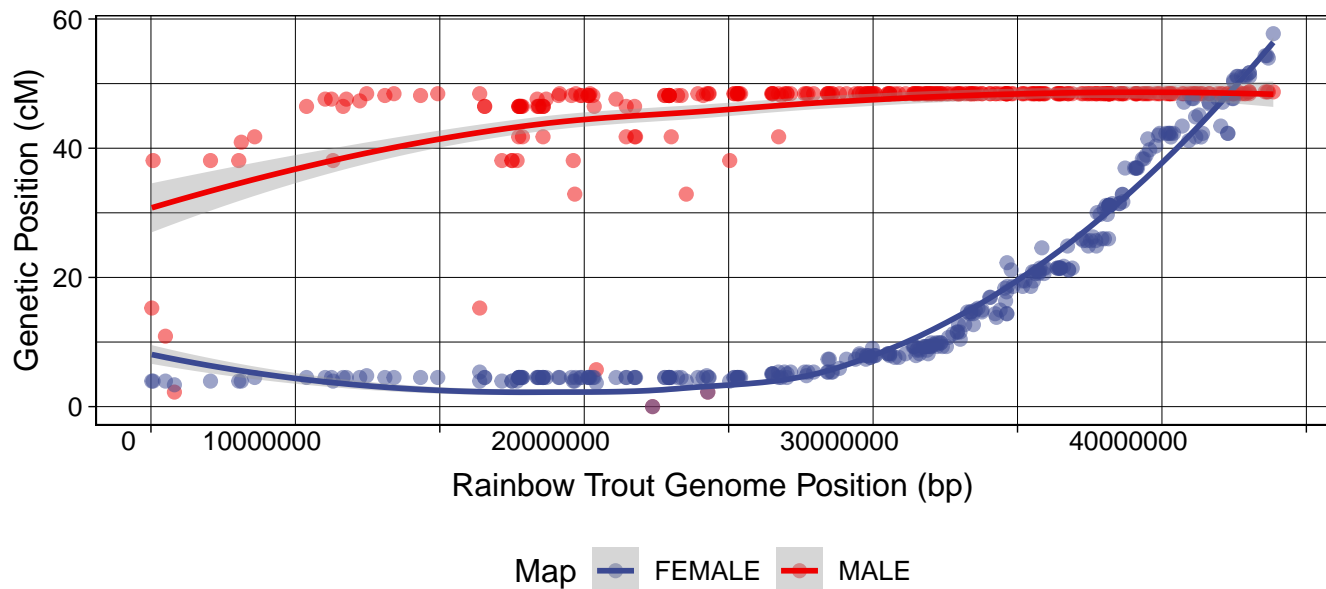
sna16 vs. omy16



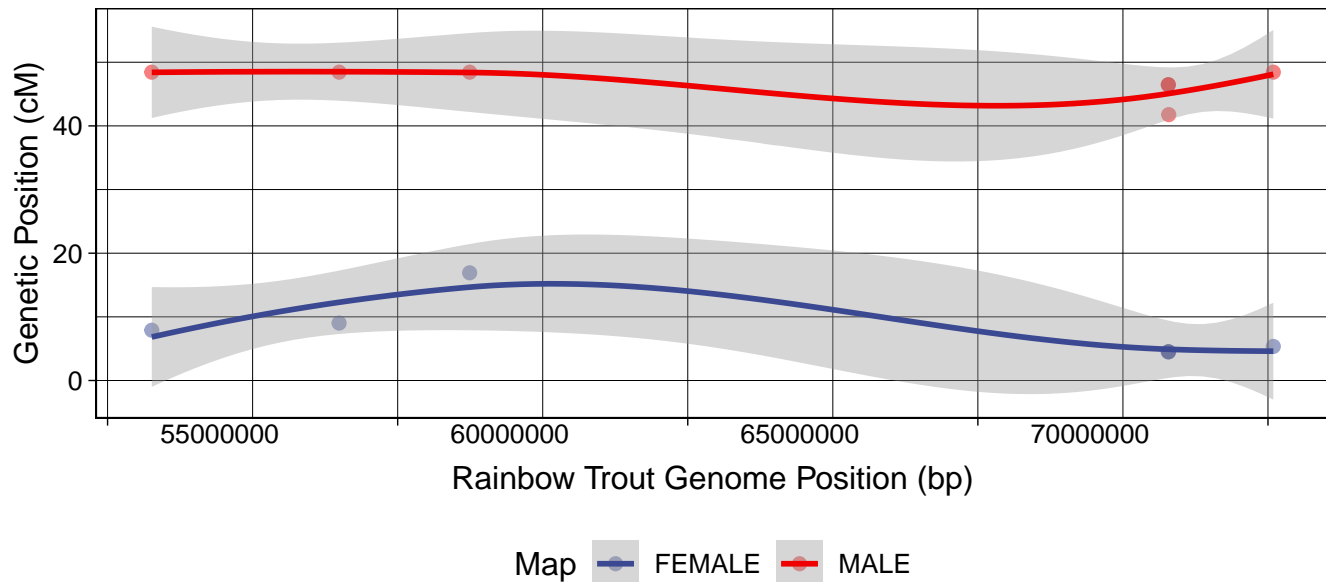
sna16 vs. omy20



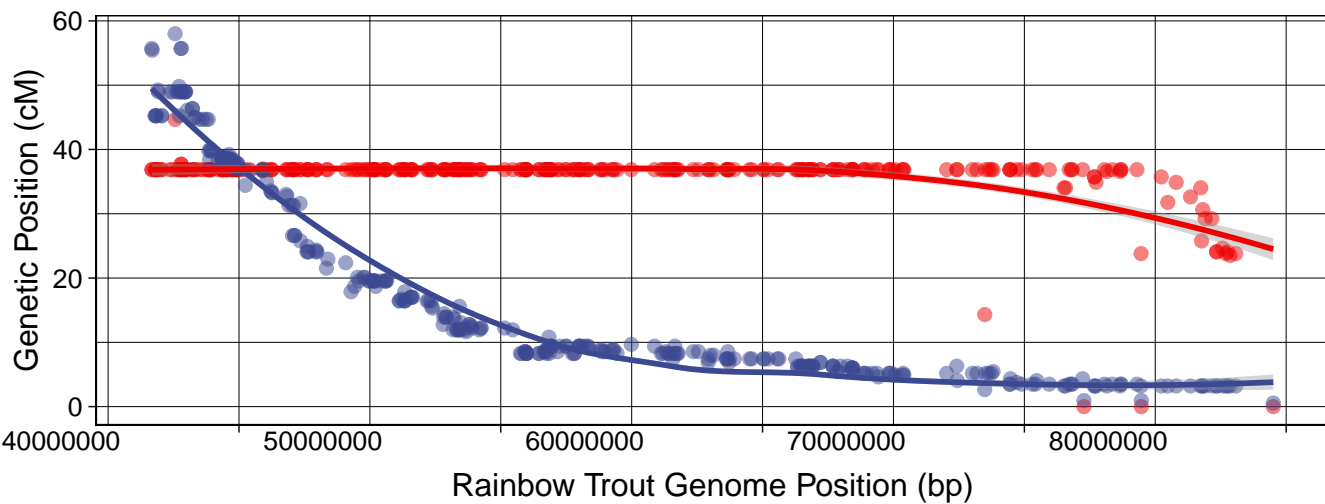
sna17 vs. omy25



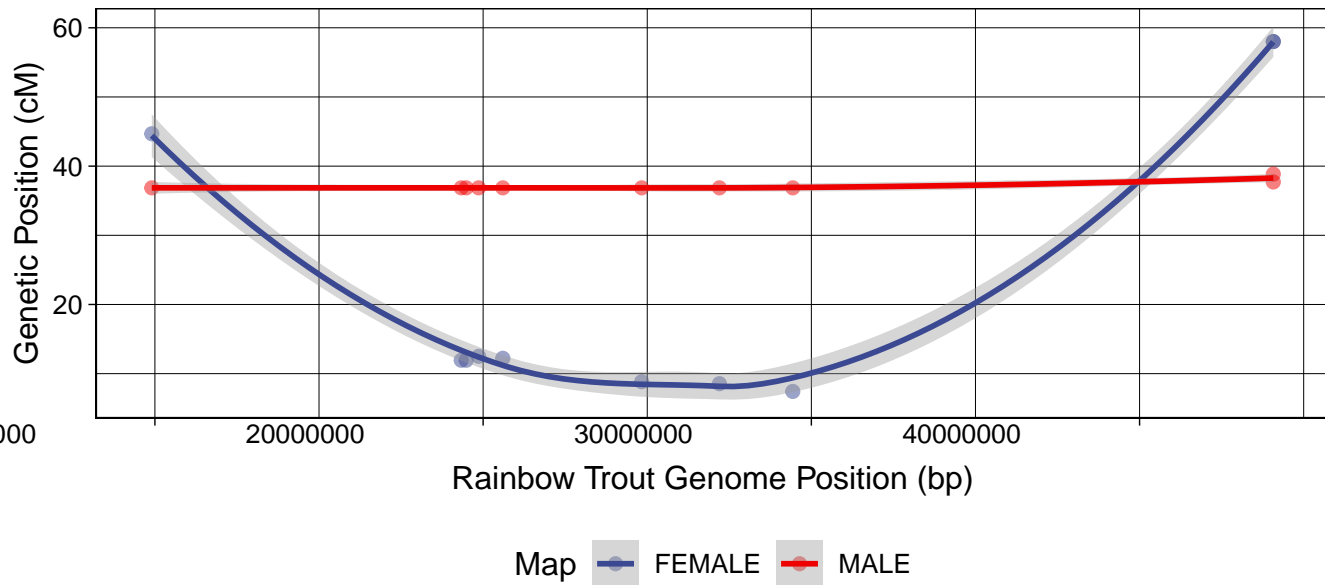
sna17 vs. omy14



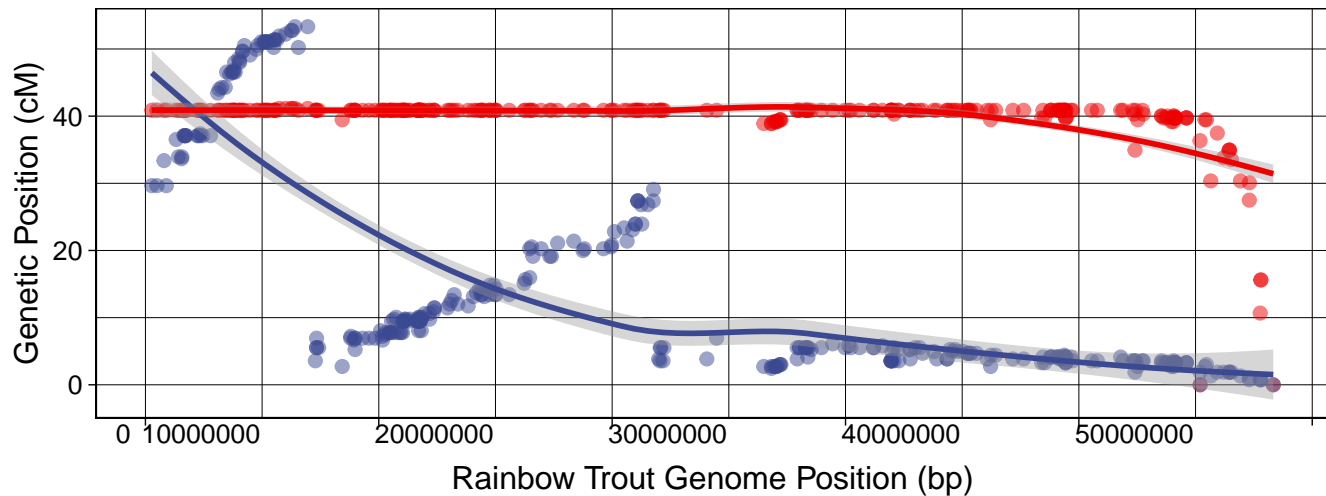
sna18 vs. omy11



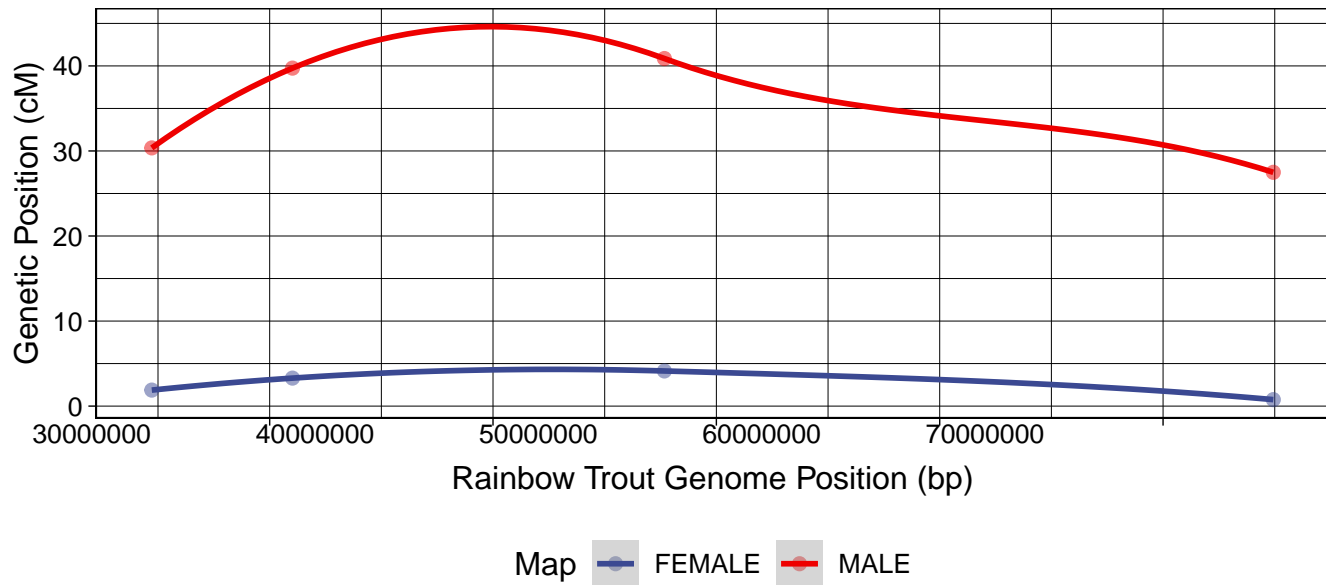
sna18 vs. omy6



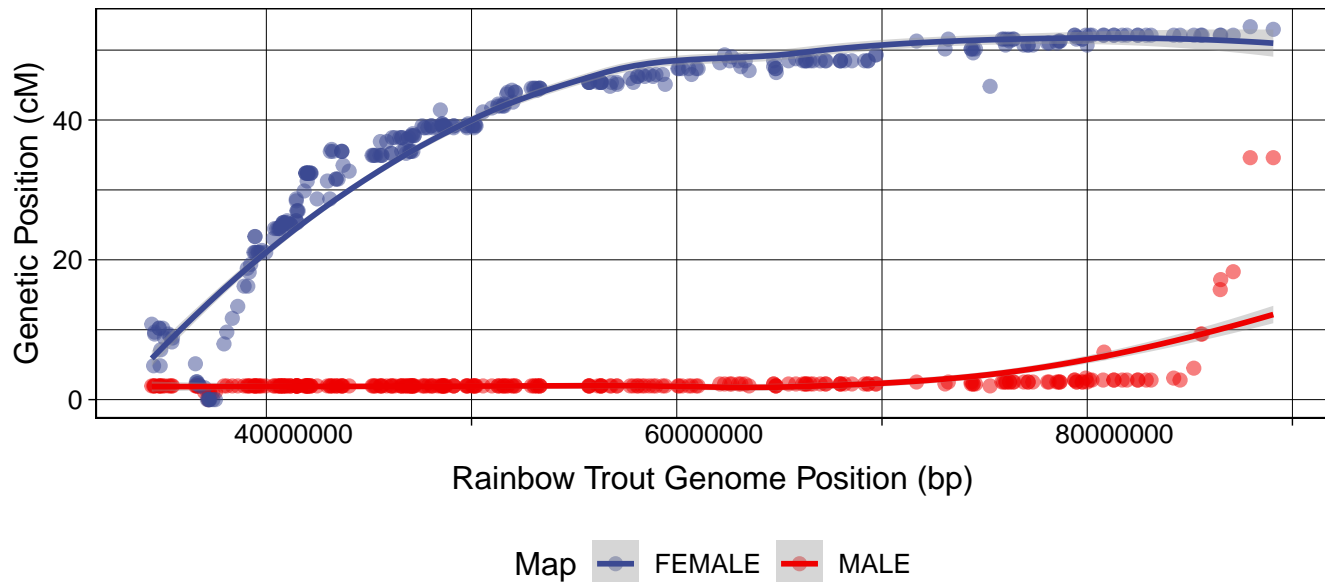
sna19 vs. omy22



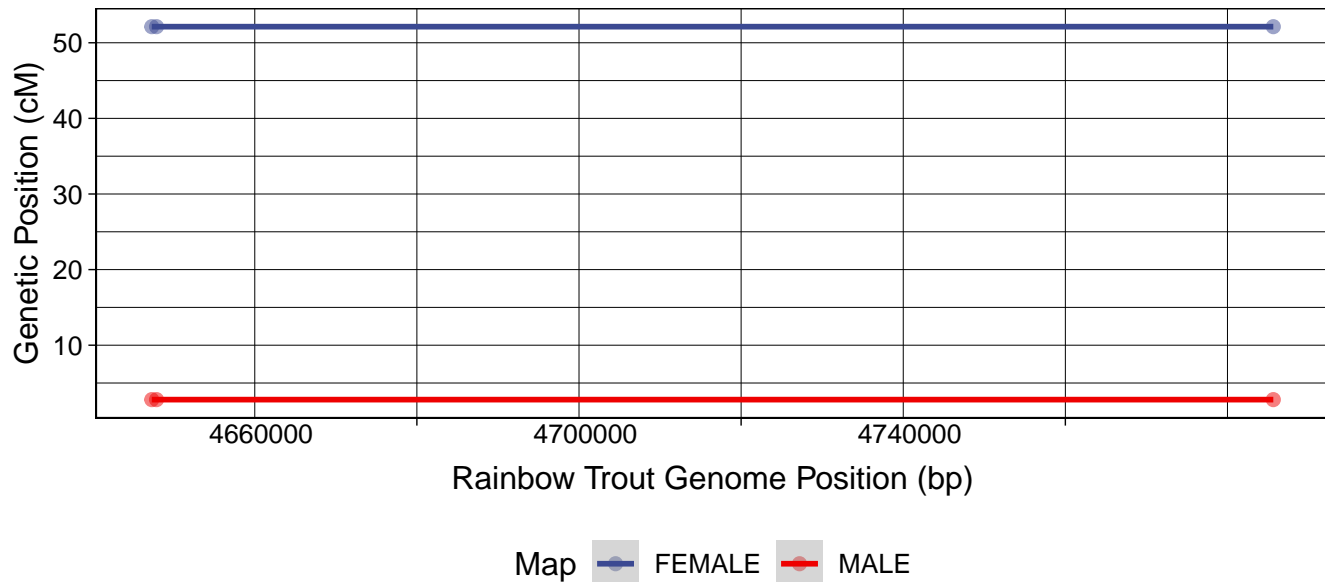
sna19 vs. omyUn2



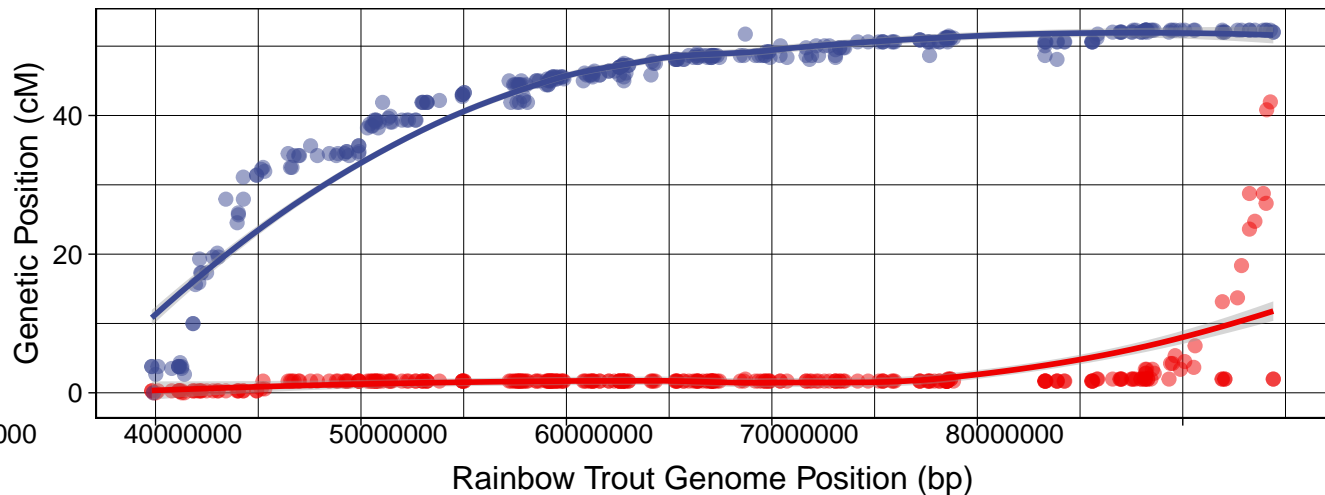
sna20 vs. omy7



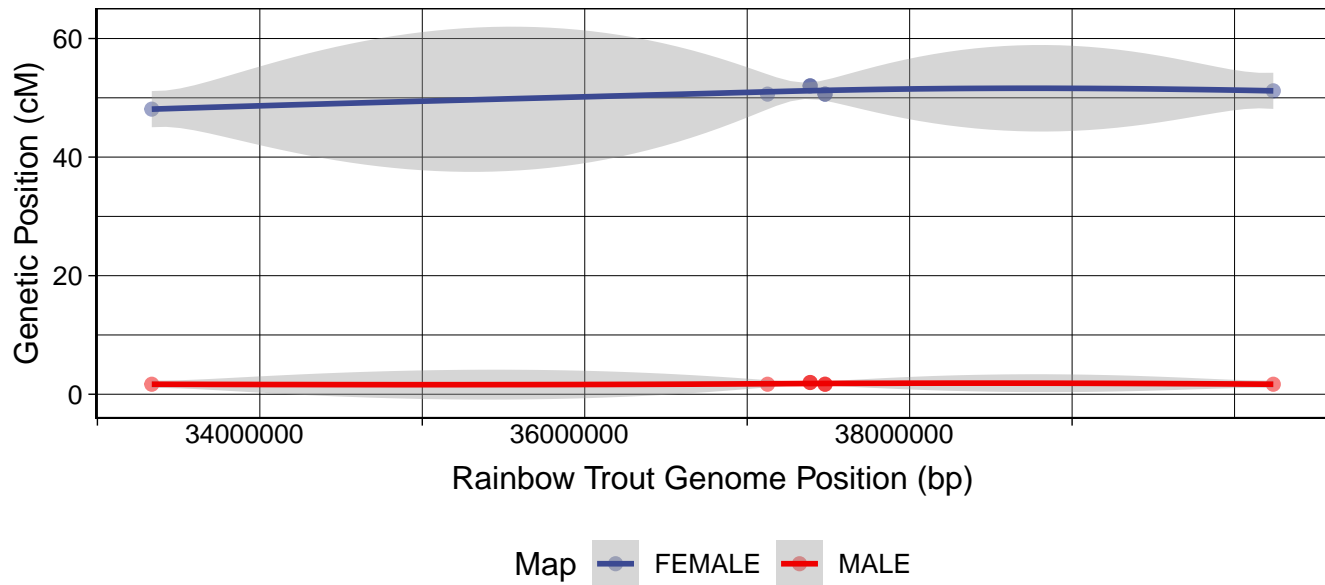
sna20 vs. omy6



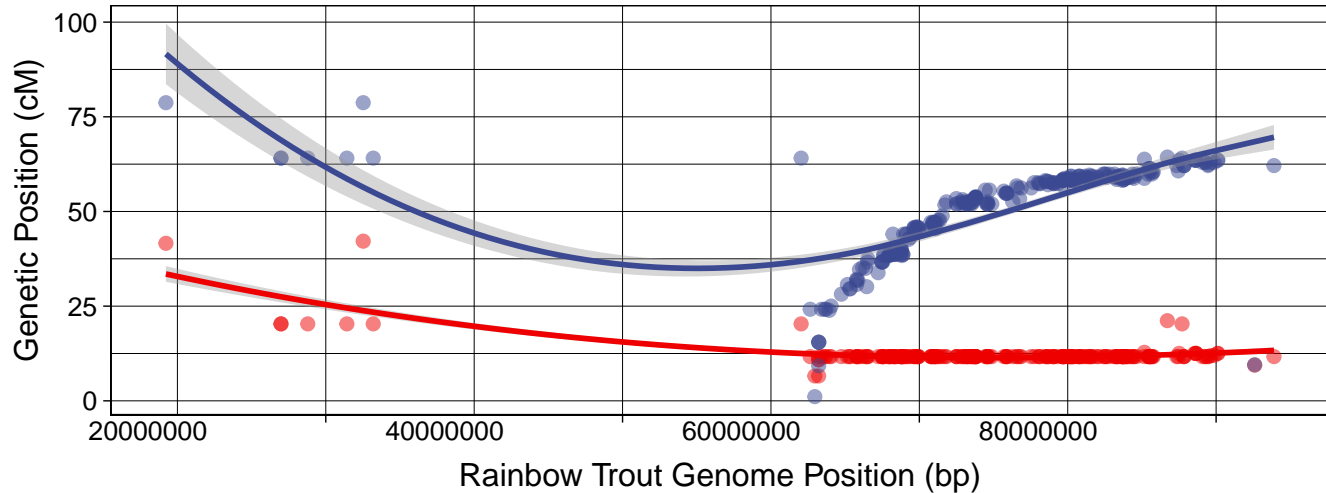
sna21 vs. omy2



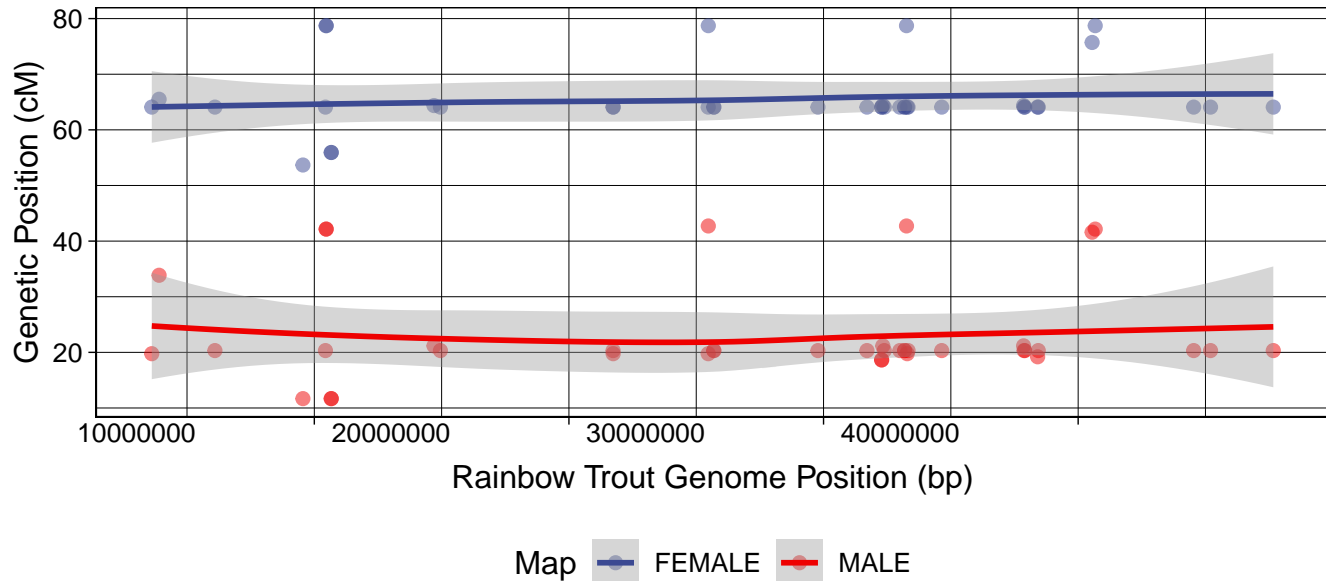
sna21 vs. omy1



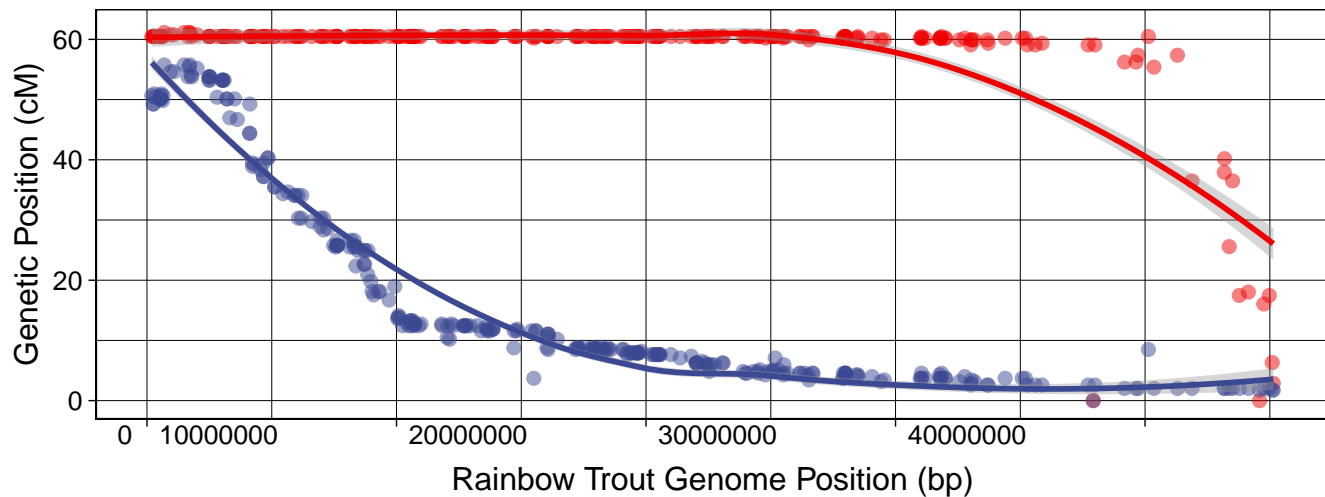
sna22 vs. omy1



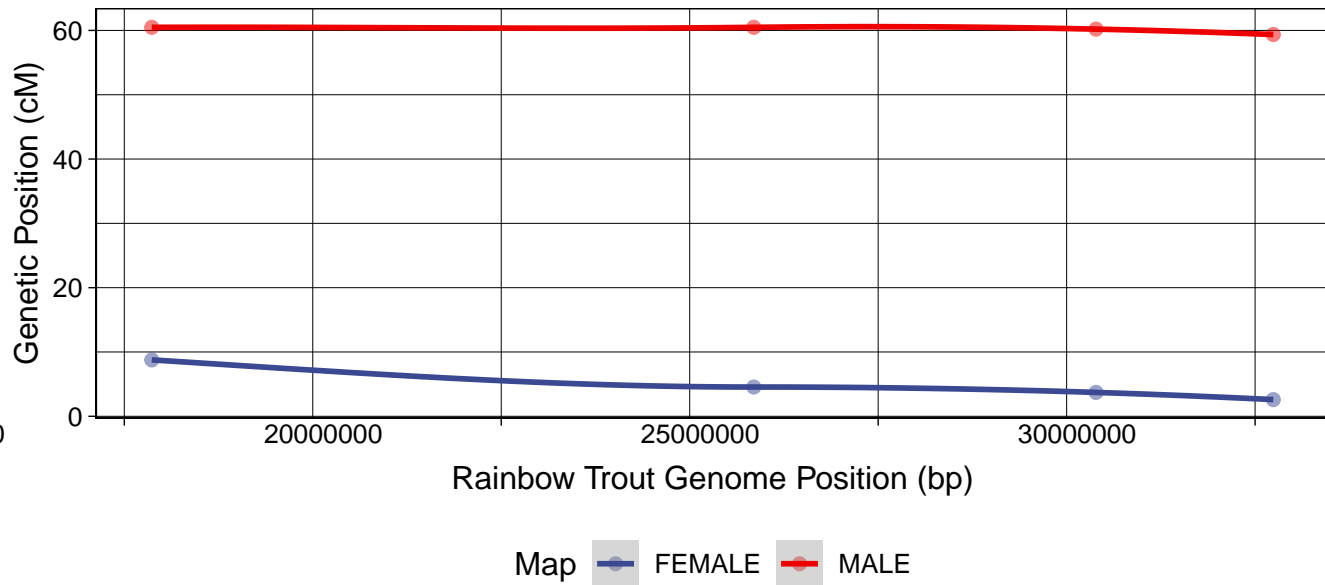
sna22 vs. omy23



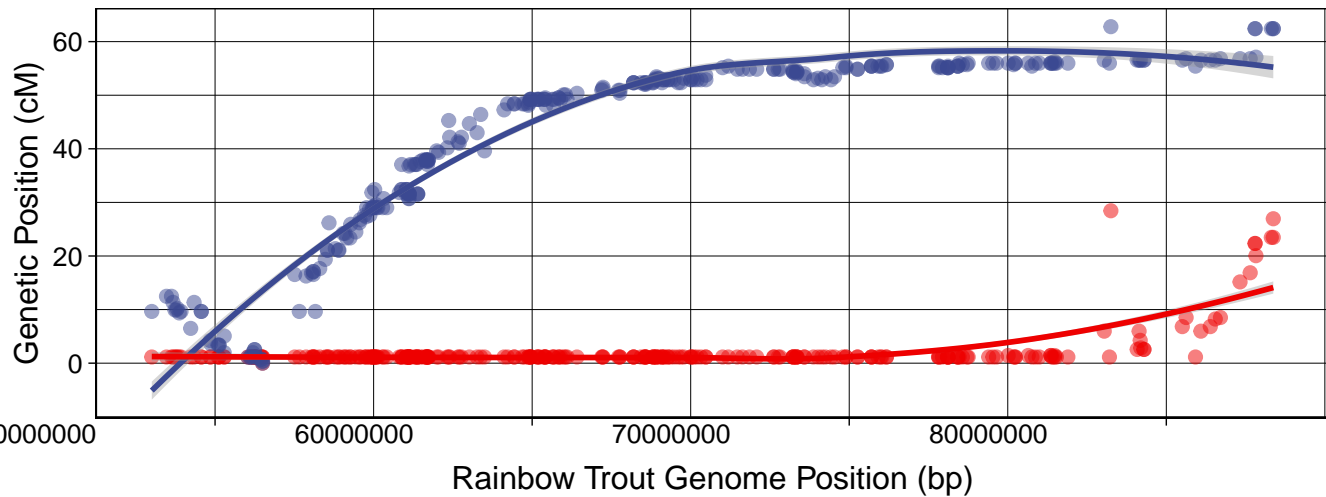
sna23 vs. omy27



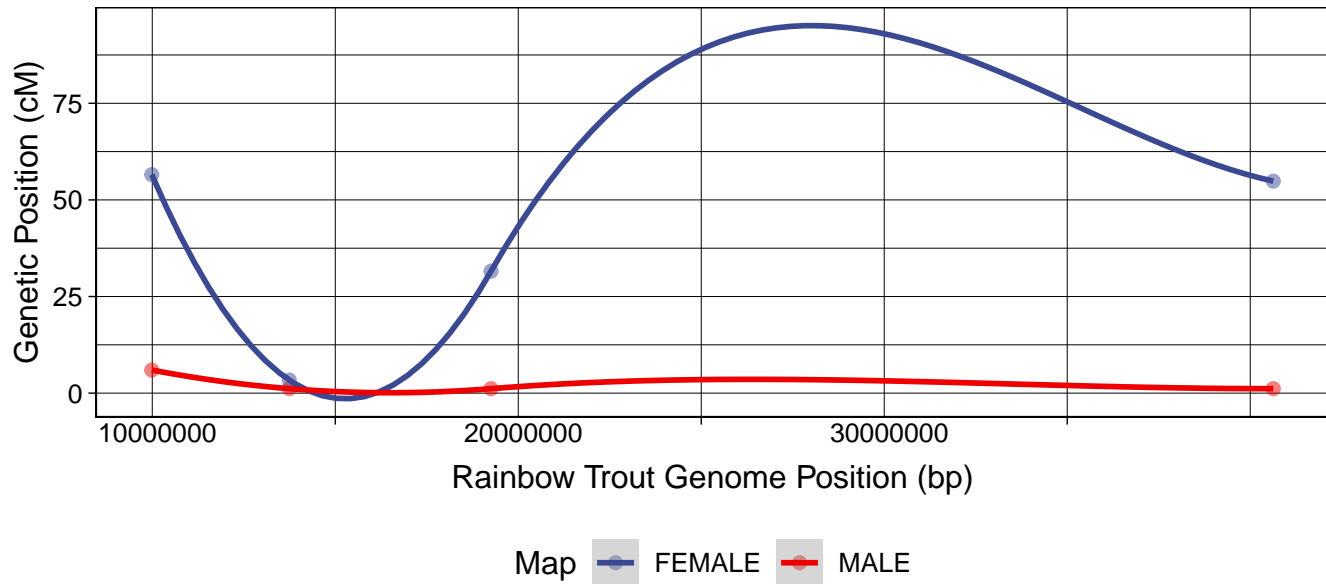
sna23 vs. omy24



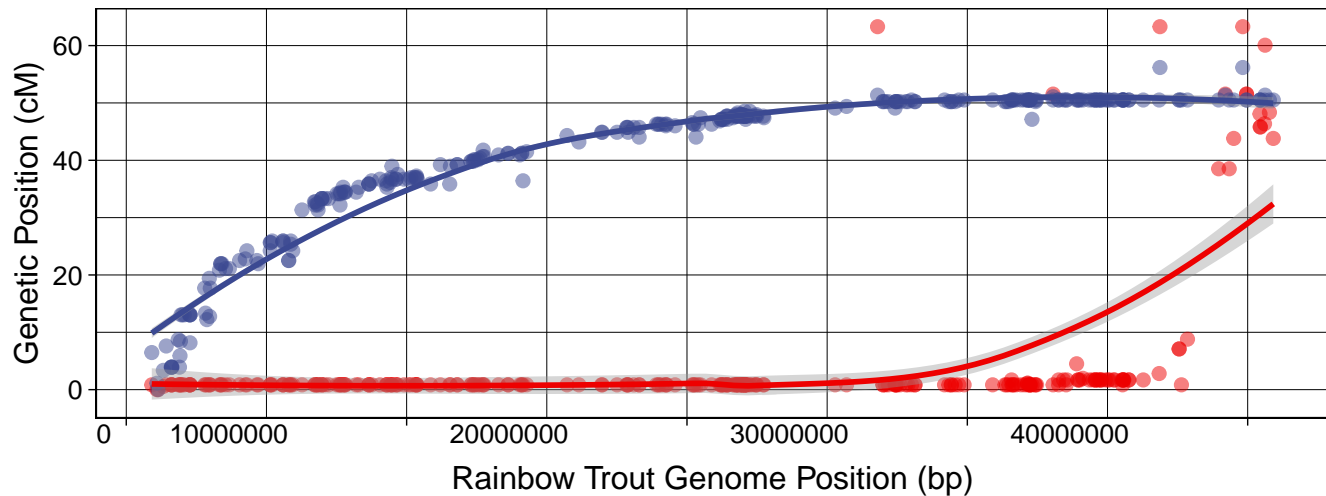
sna24 vs. omy4



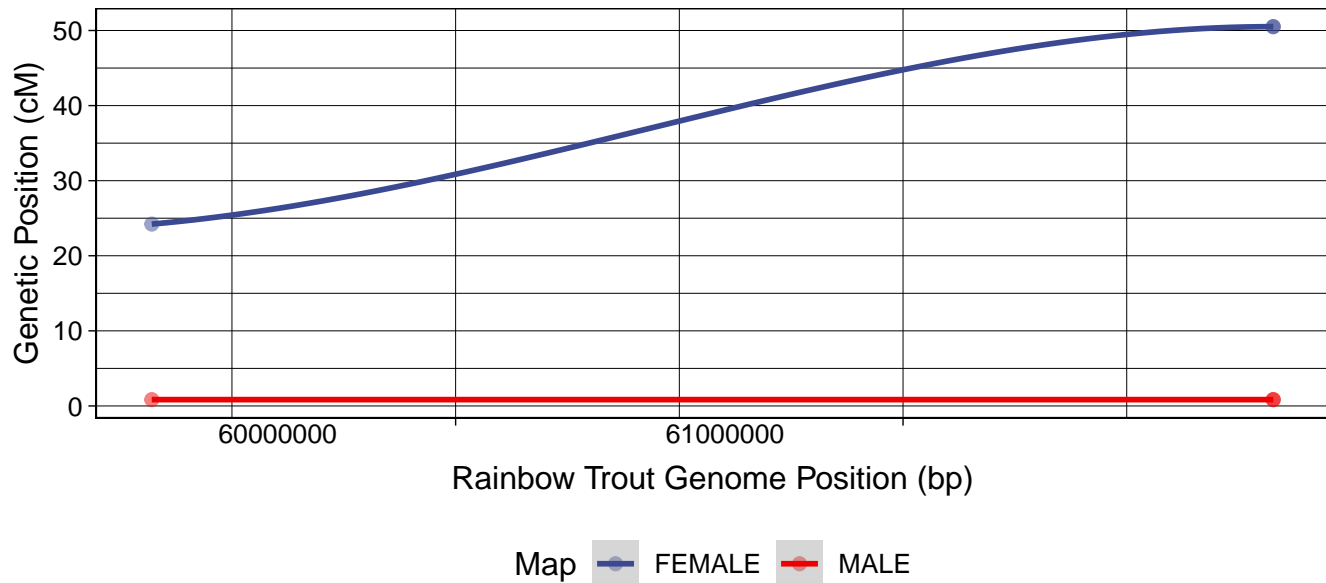
sna24 vs. omy8



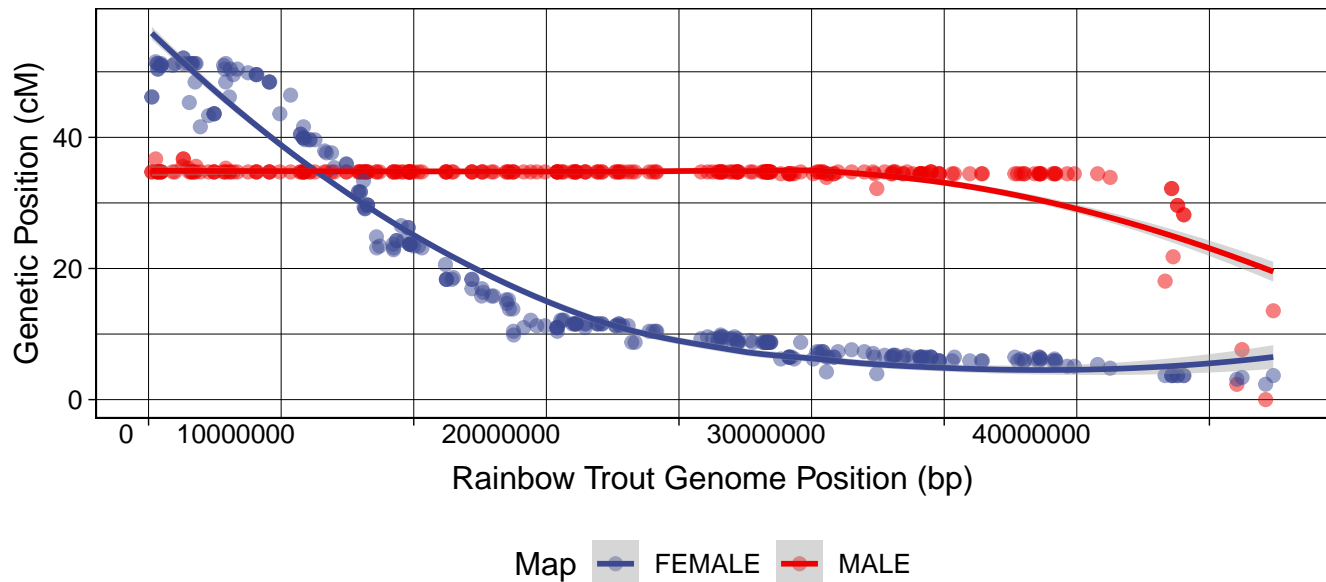
sna25 vs. omy28



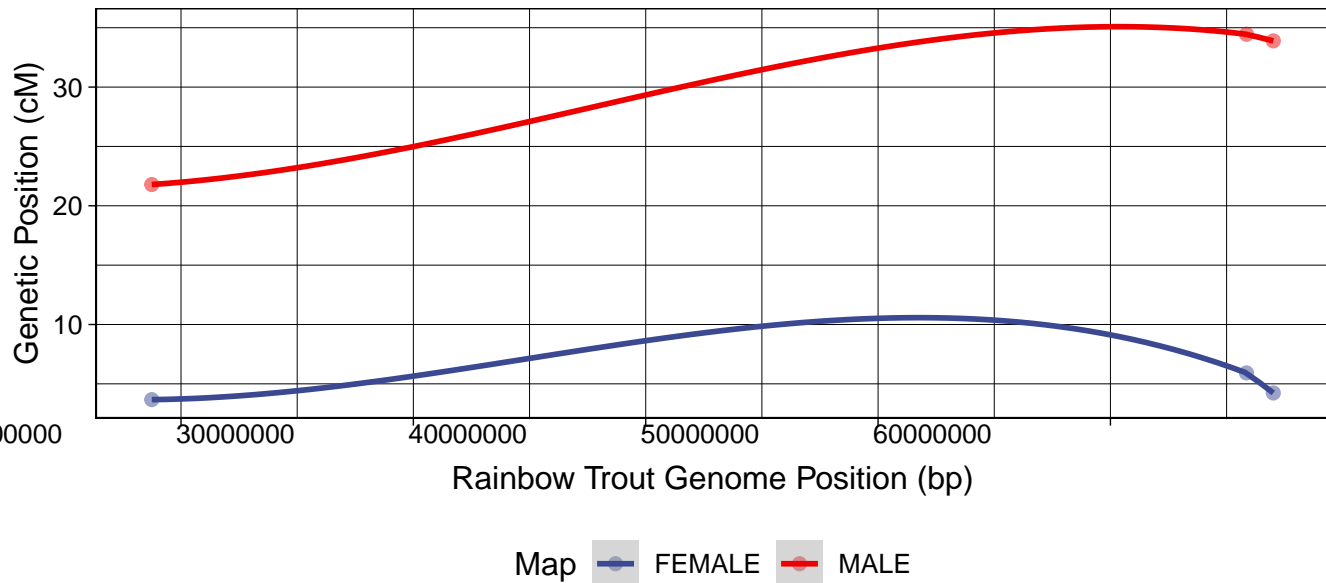
sna25 vs. omy16



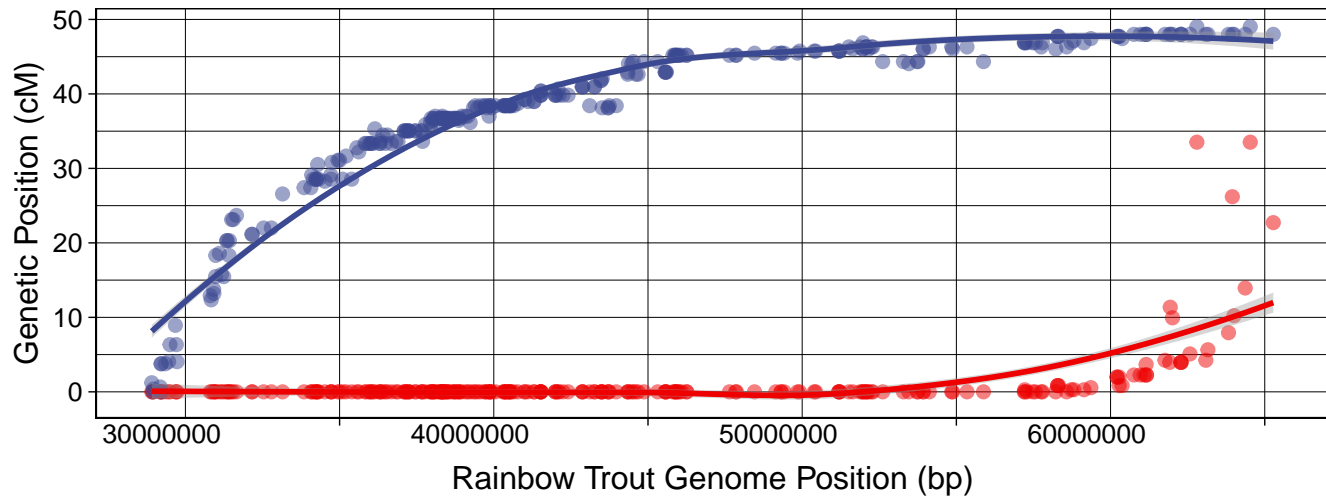
sna26 vs. omy29



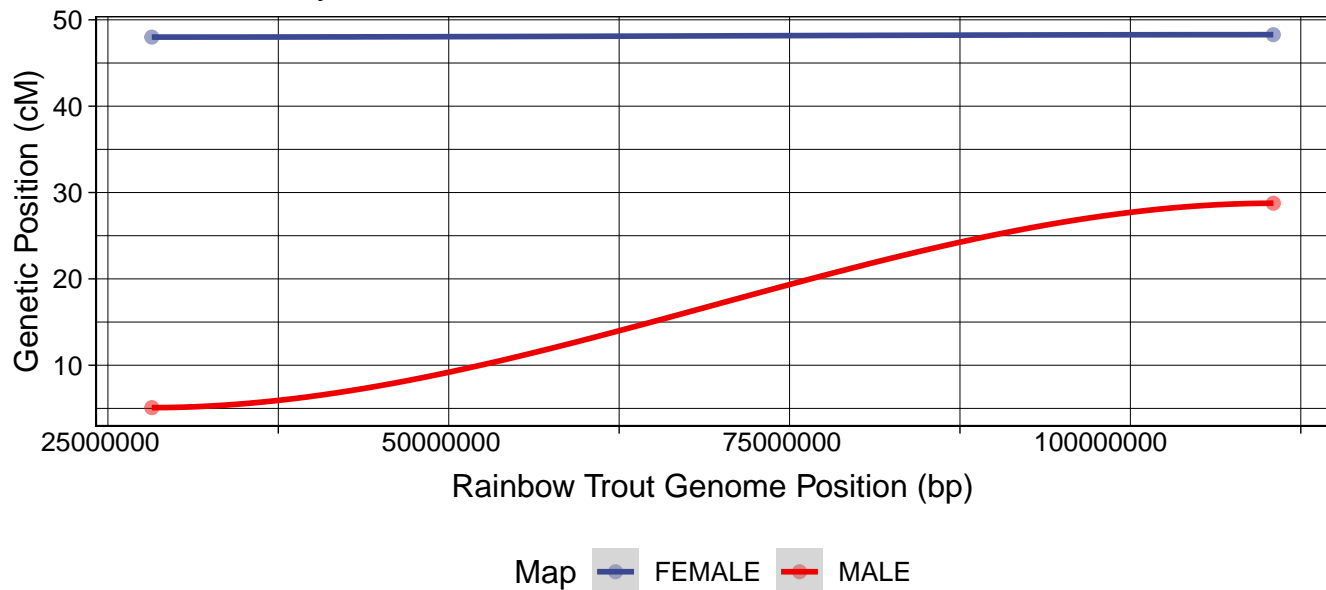
sna26 vs. omyUn3



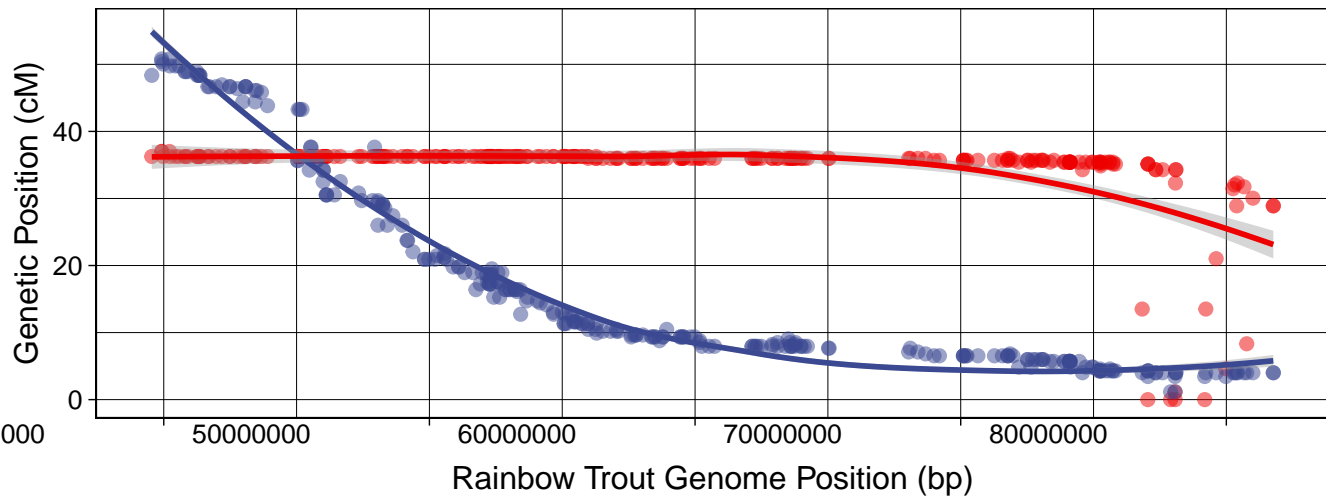
sna27 vs. omy18



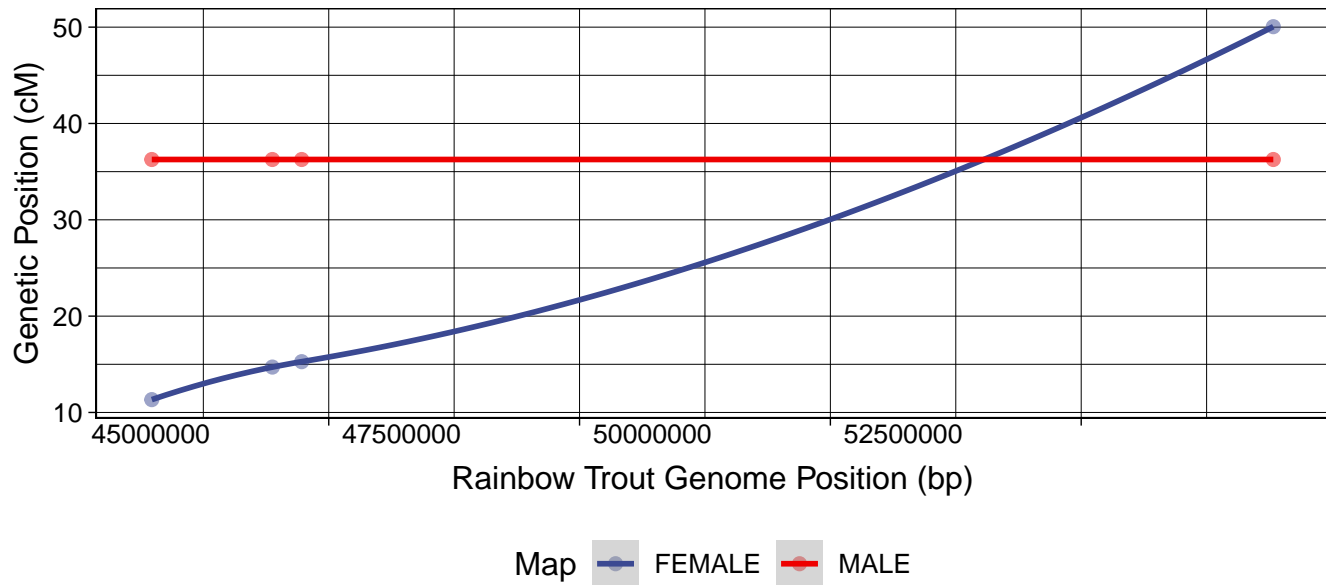
sna27 vs. omyUn1



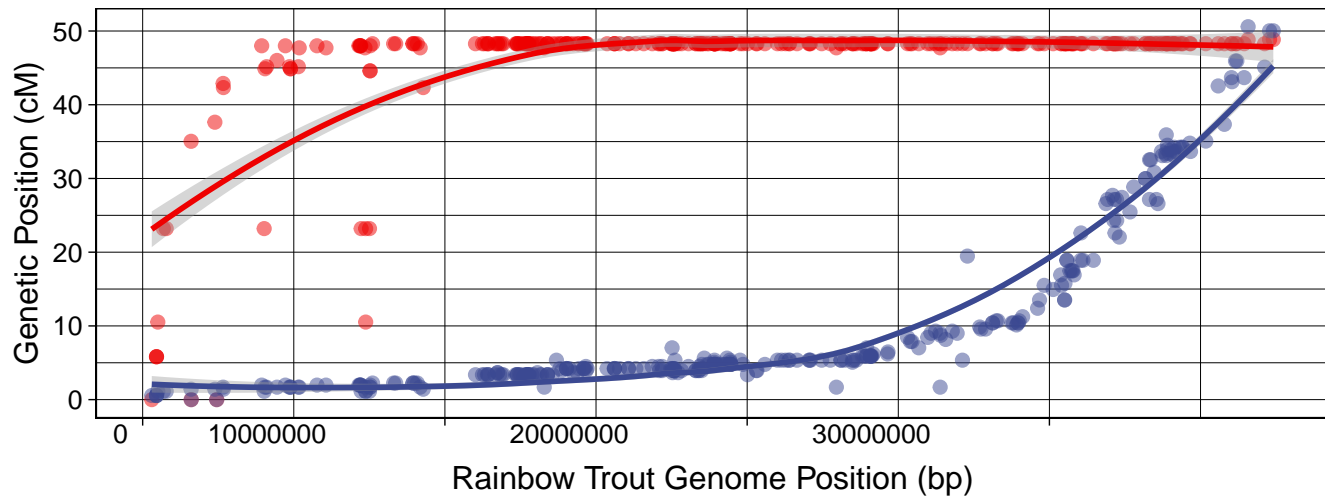
sna28 vs. omy25



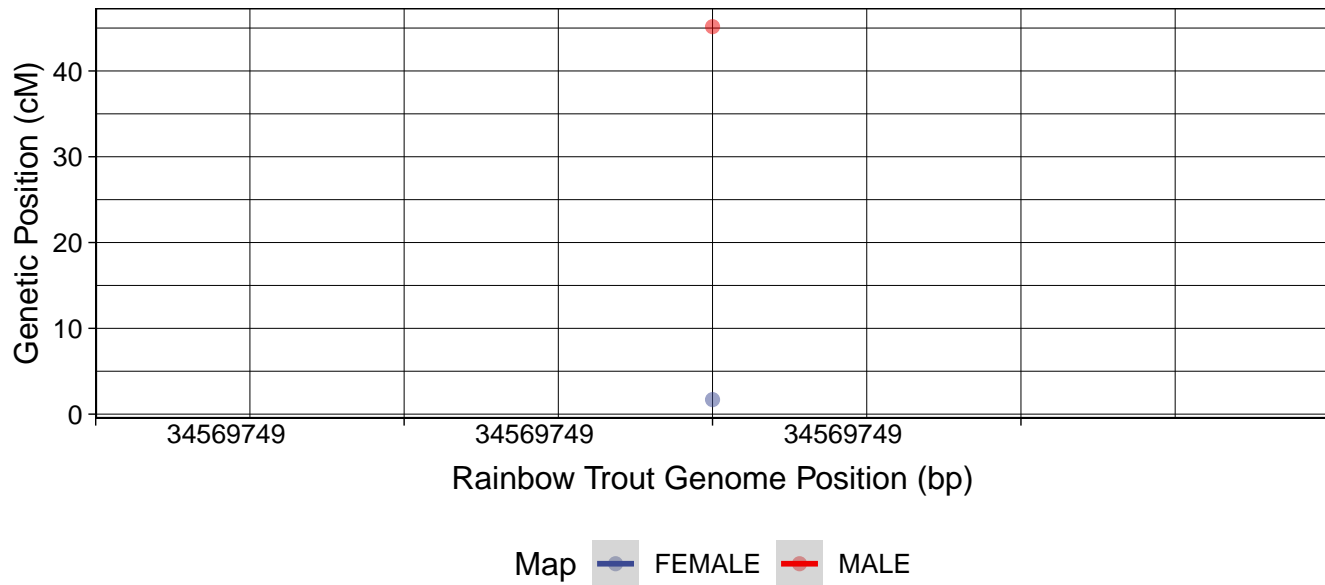
sna28 vs. omy19



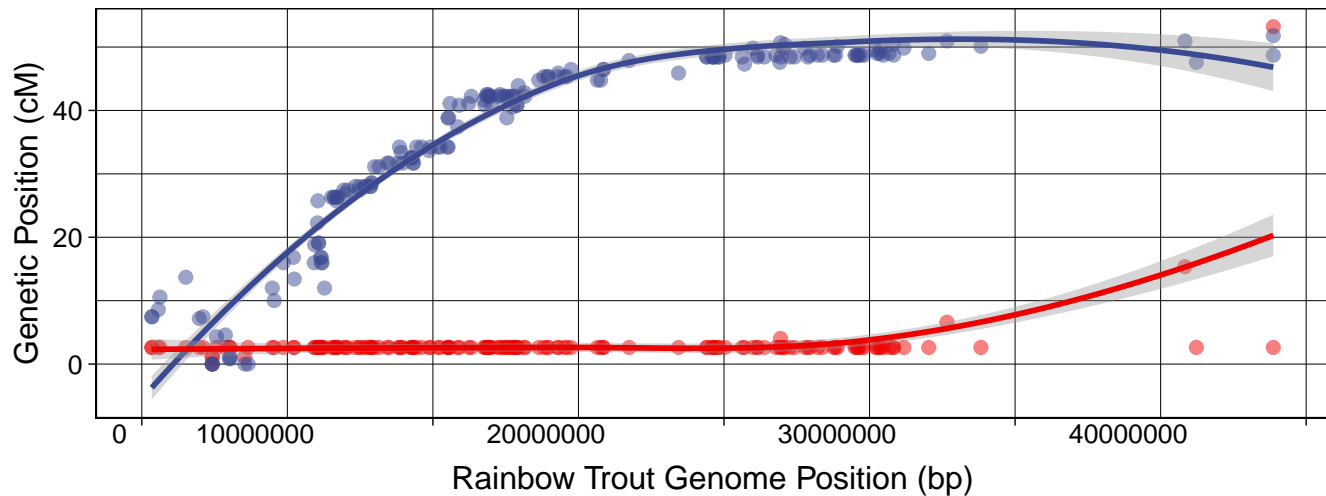
sna29 vs. omy8



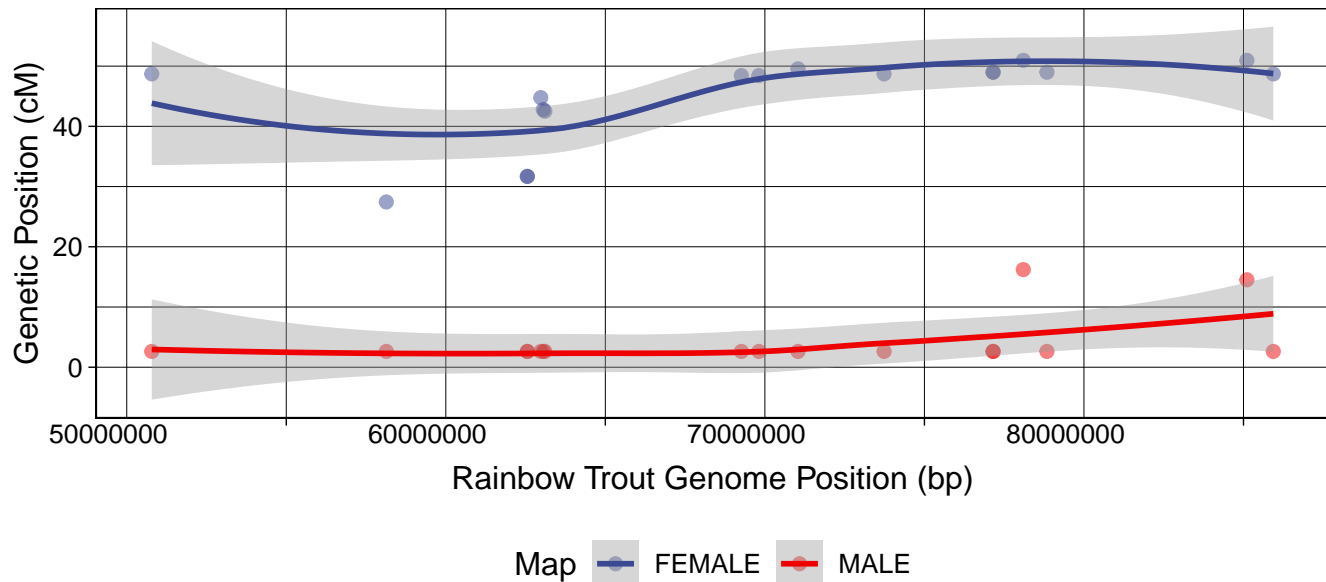
sna29 vs. omyUn4



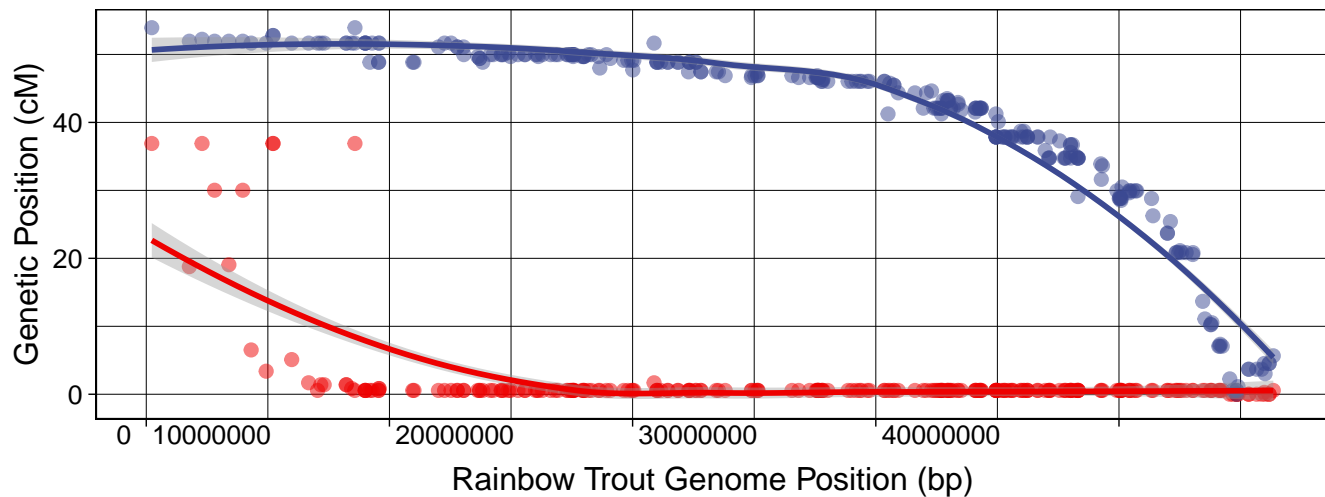
sna30 vs. omy26



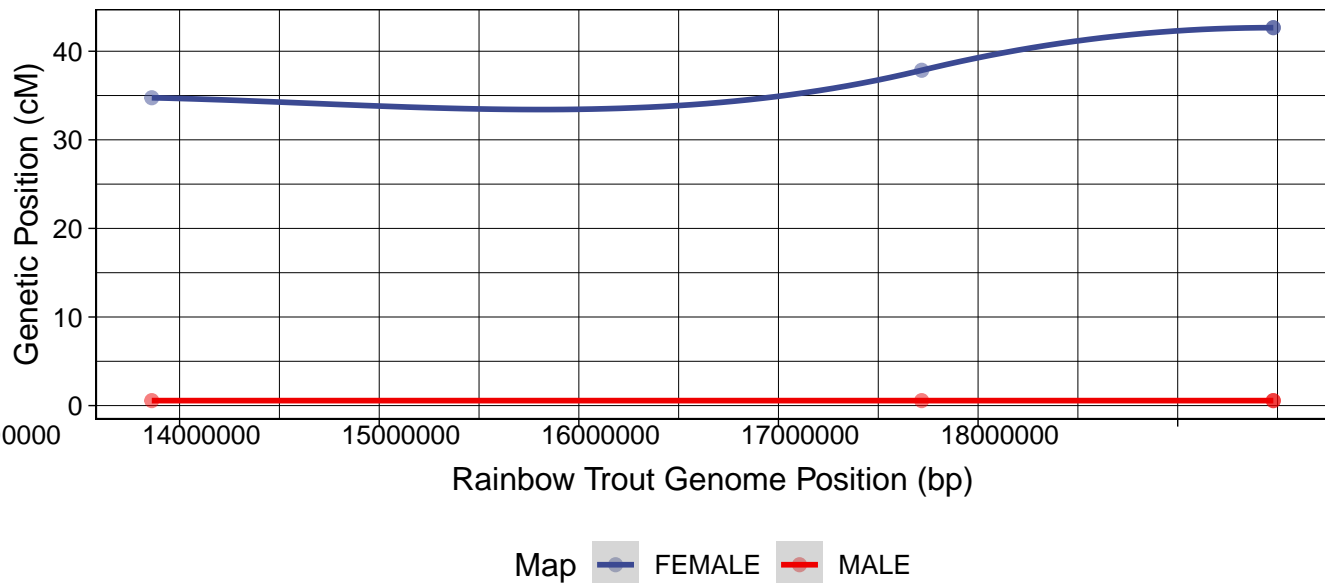
sna30 vs. omy6



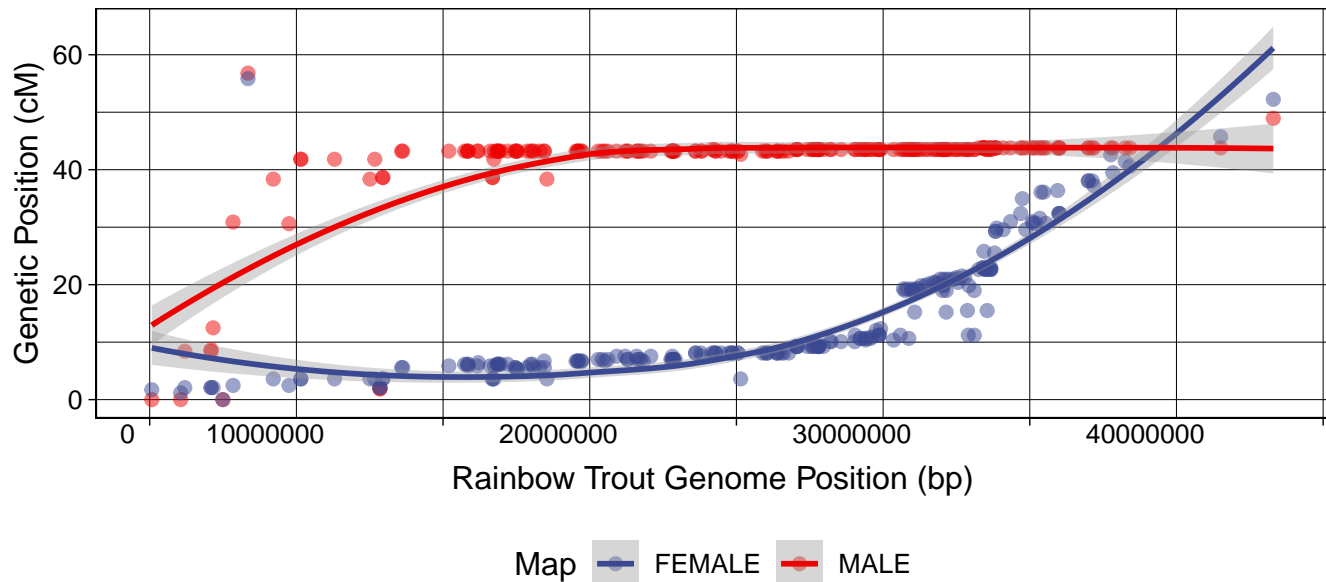
sna31 vs. omy5



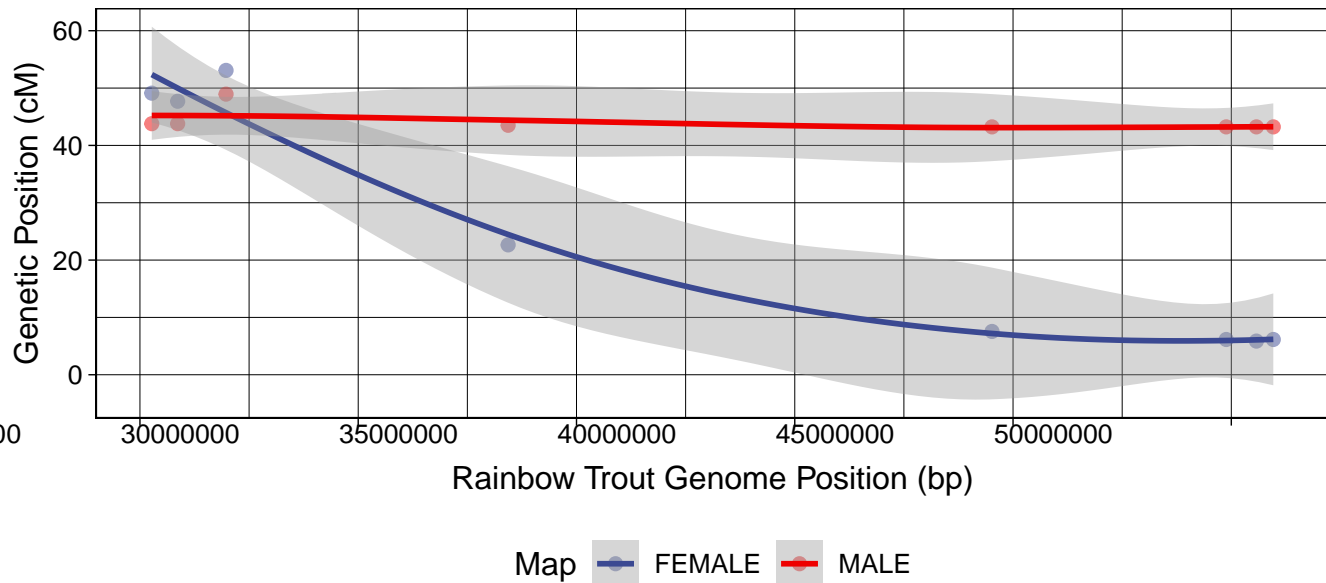
sna31 vs. omy12



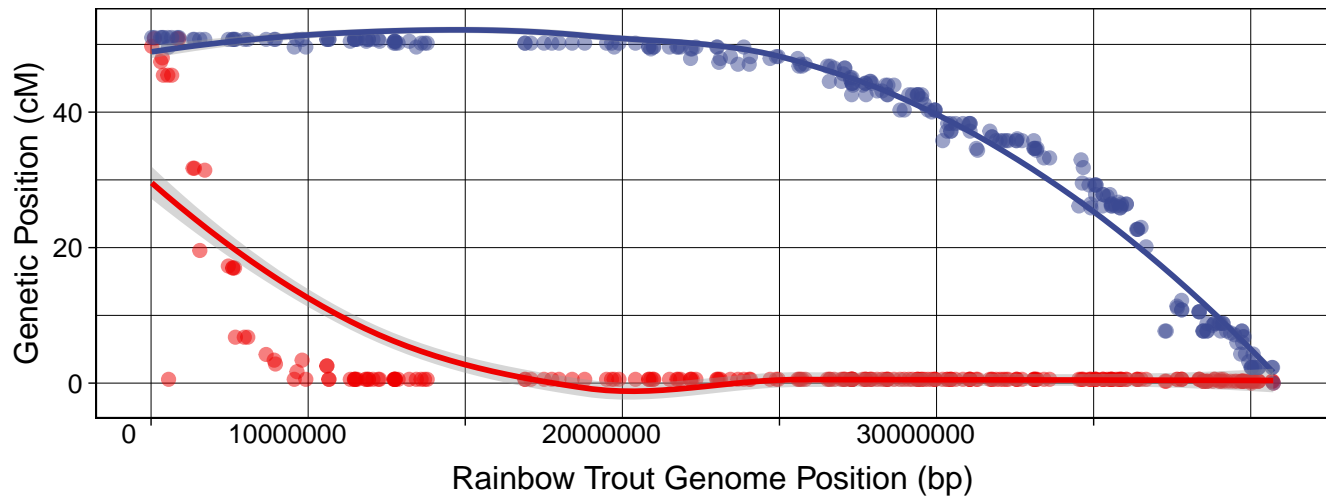
sna32 vs. omy14



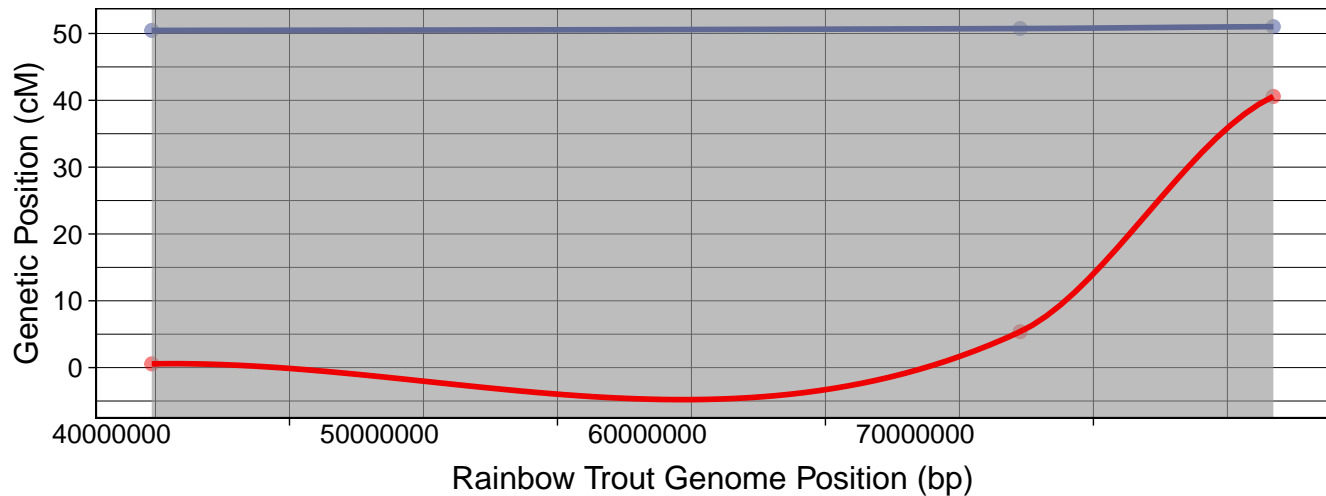
sna32 vs. omy18



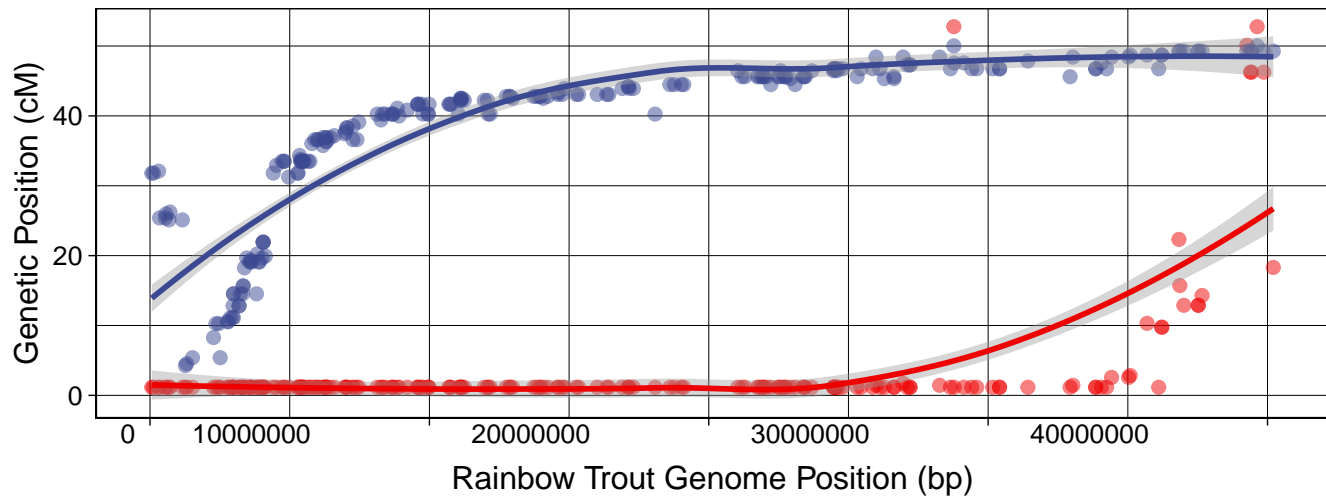
sna33 vs. omy11



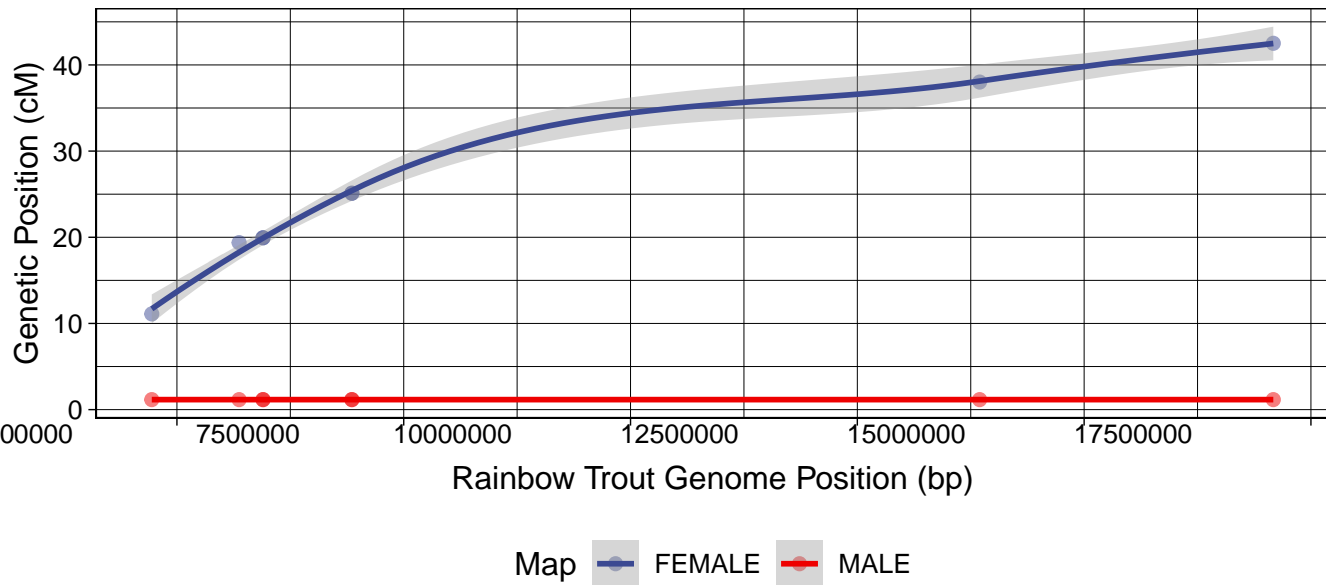
sna33 vs. omyUn3



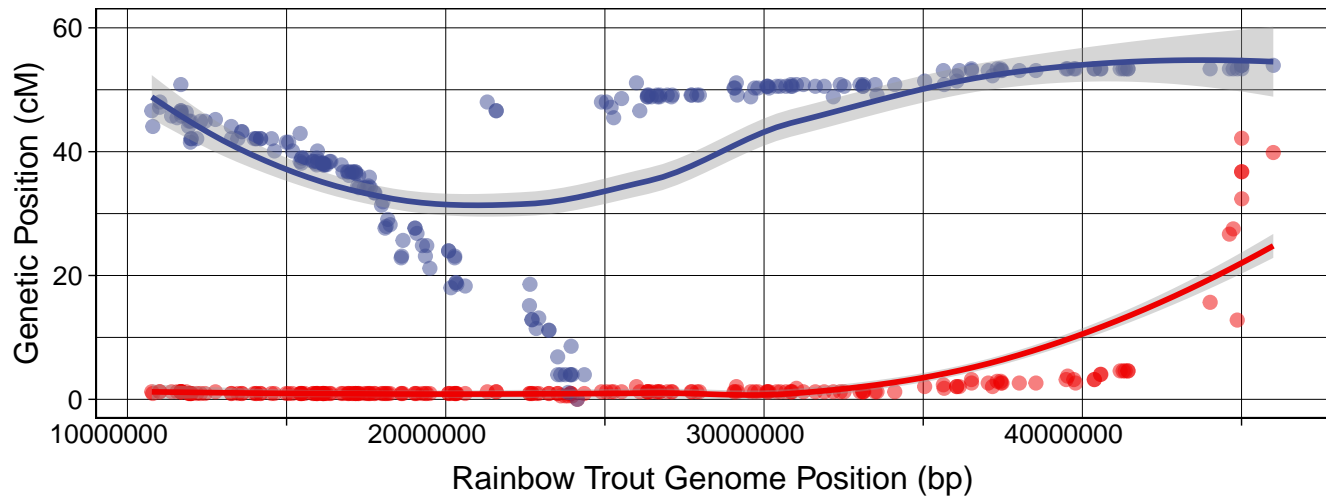
sna34 vs. omy24



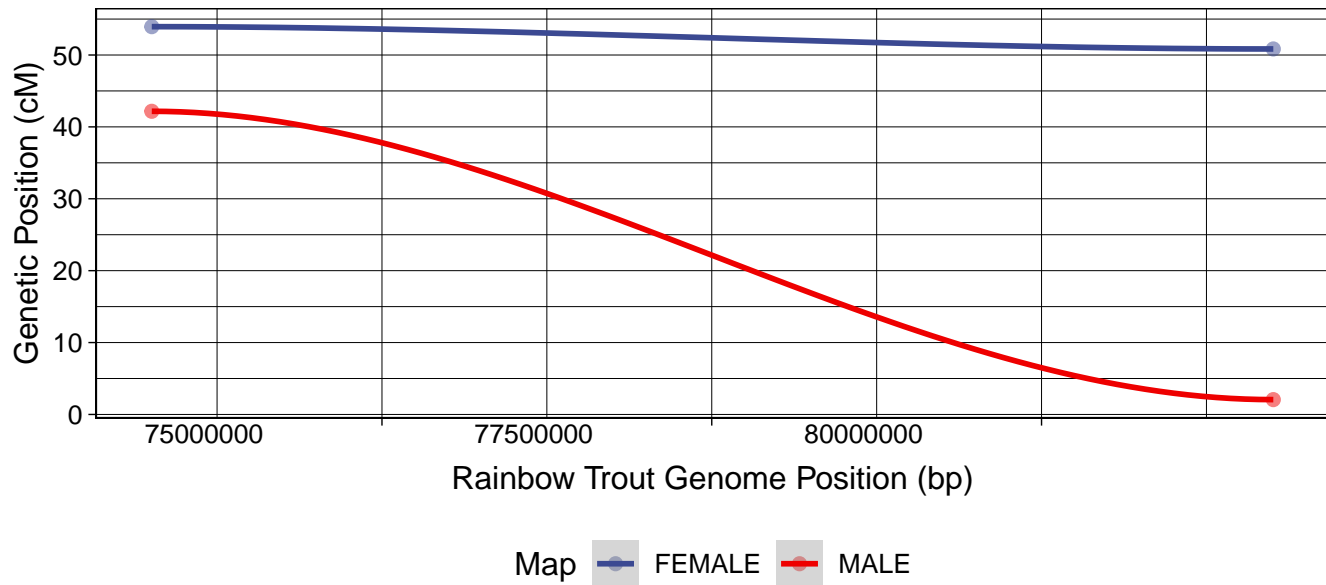
sna34 vs. omy27



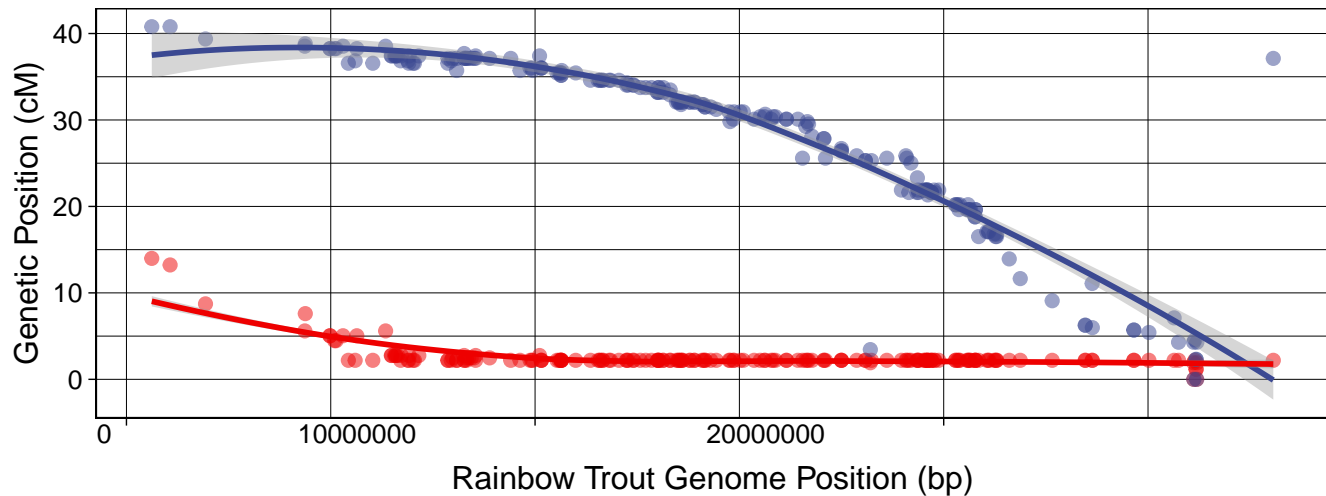
sna35 vs. omy20



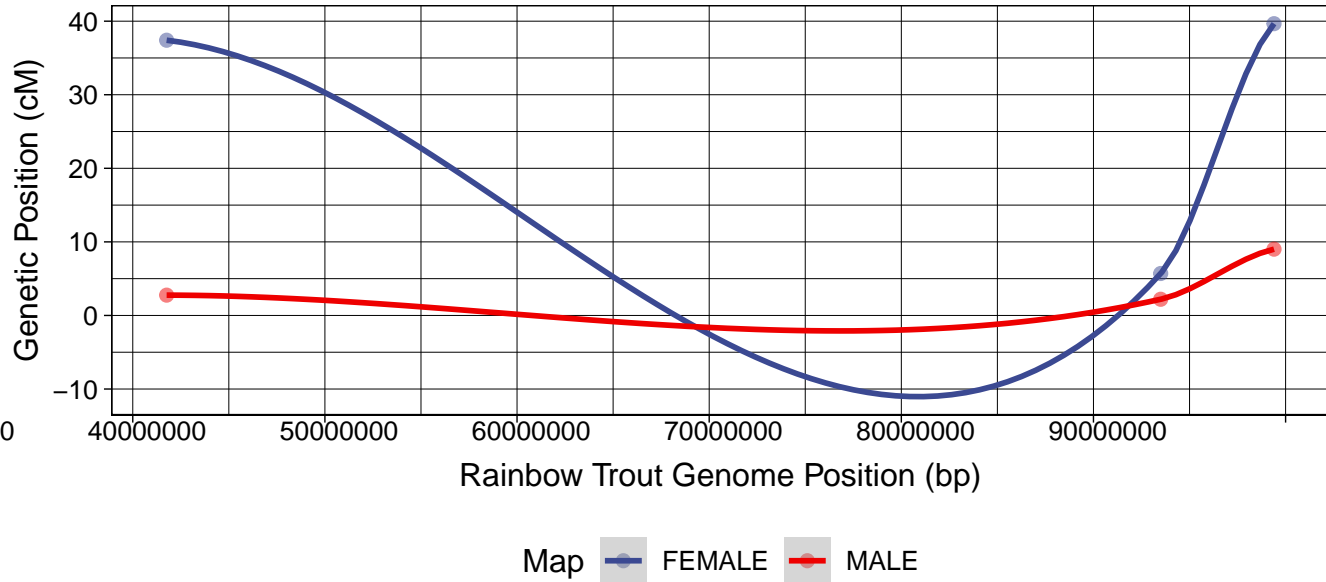
sna35 vs. omyUn3



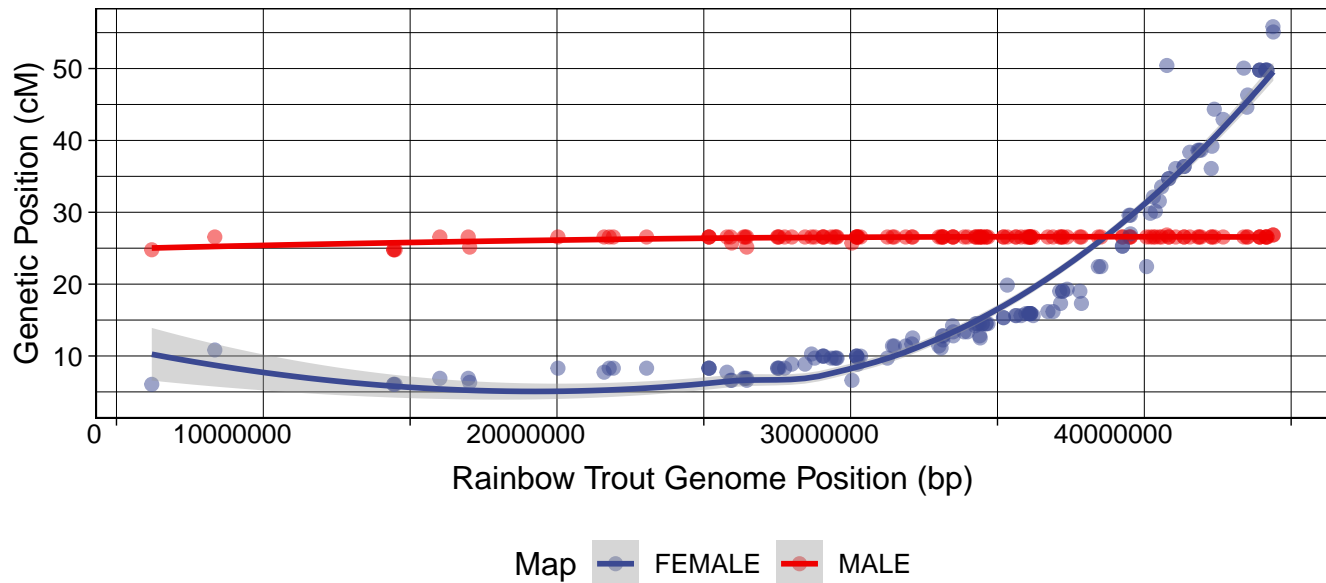
sna36 vs. omy9



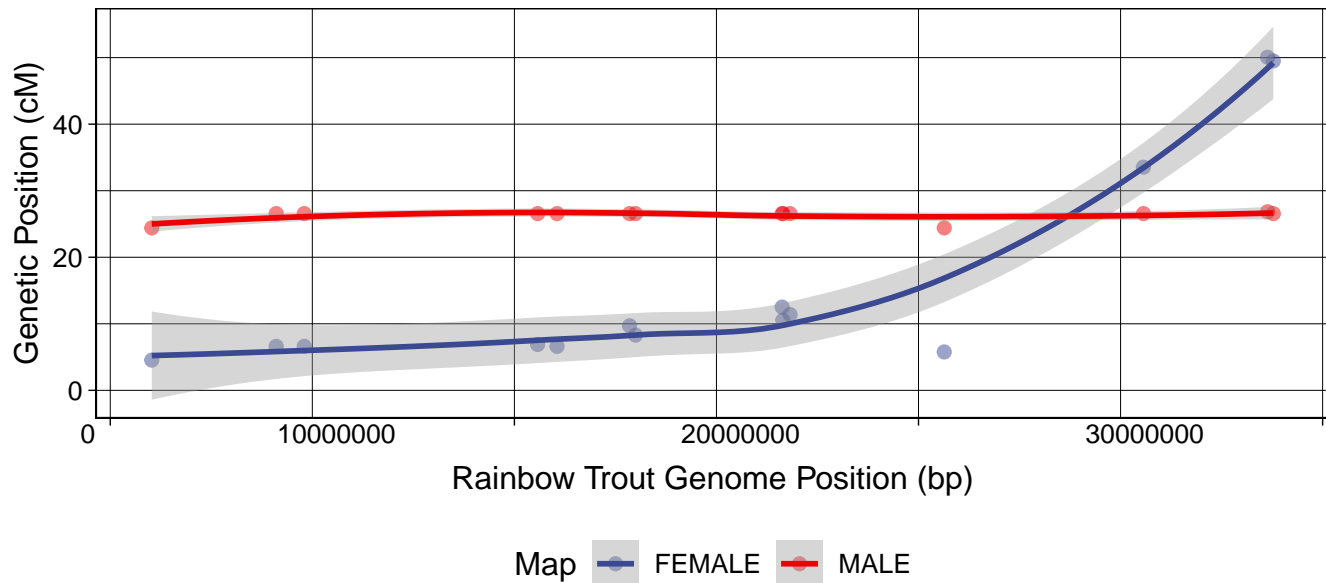
sna36 vs. omyUn3



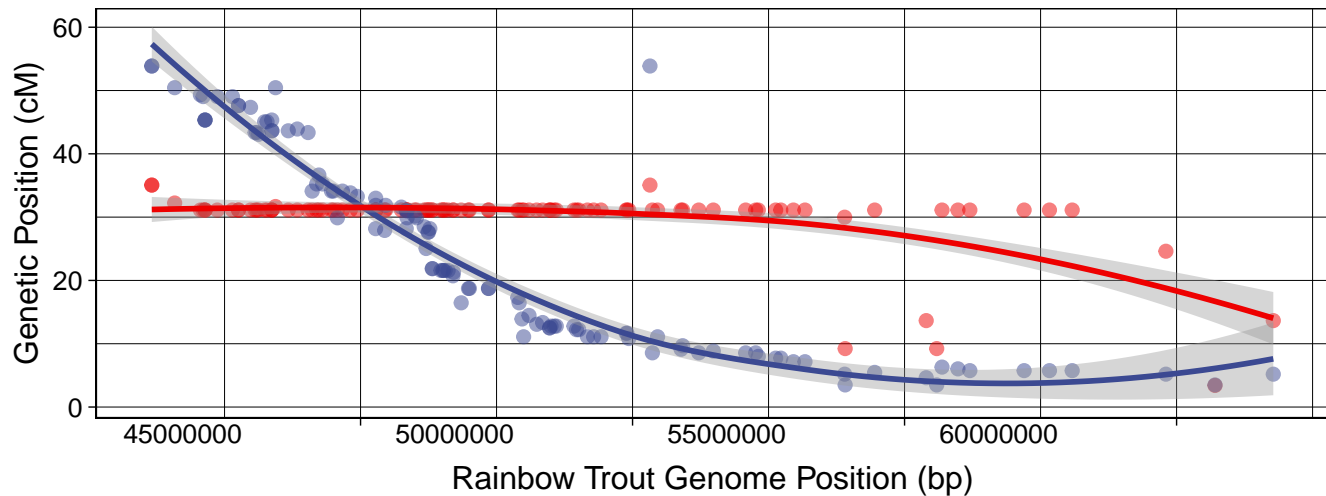
sna37 vs. omy3



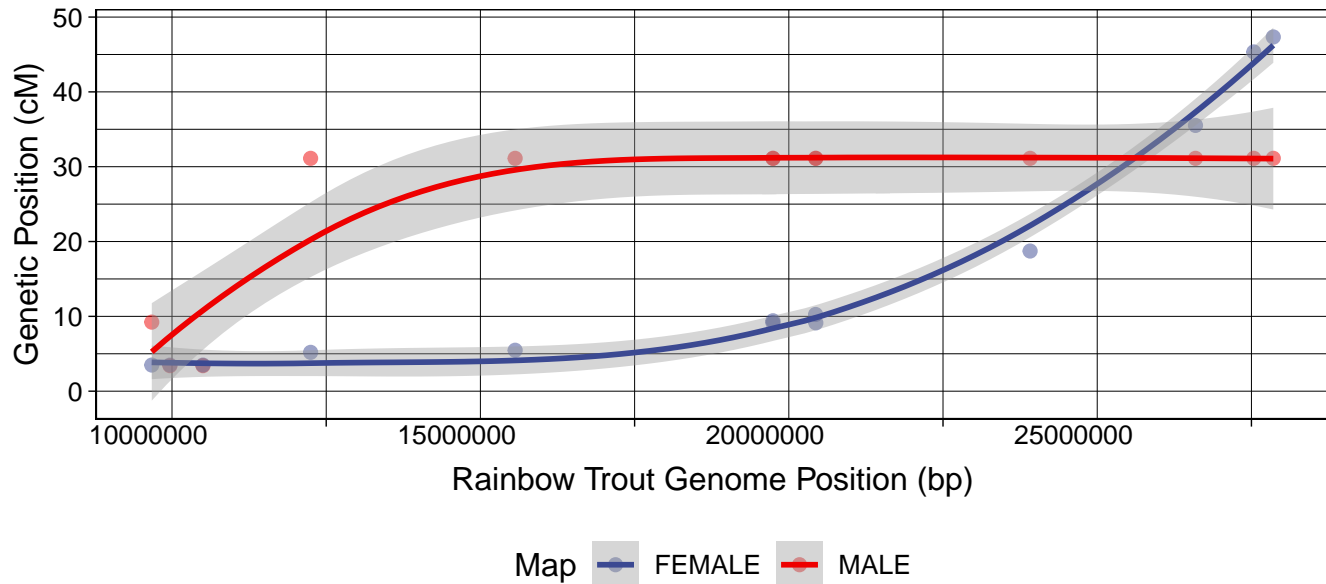
sna37 vs. omy2



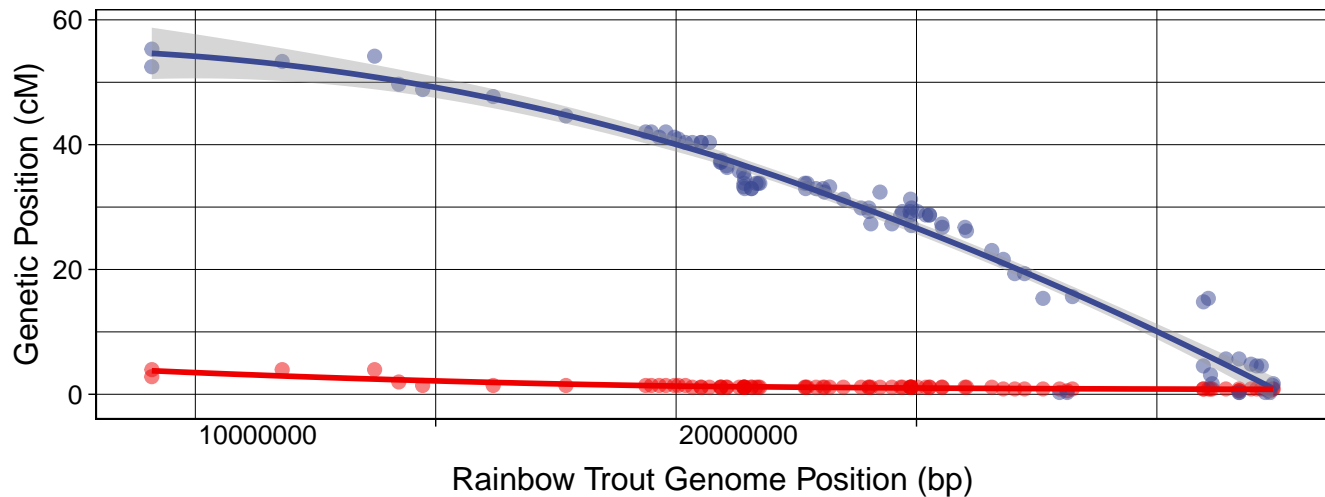
sna38 vs. omy15



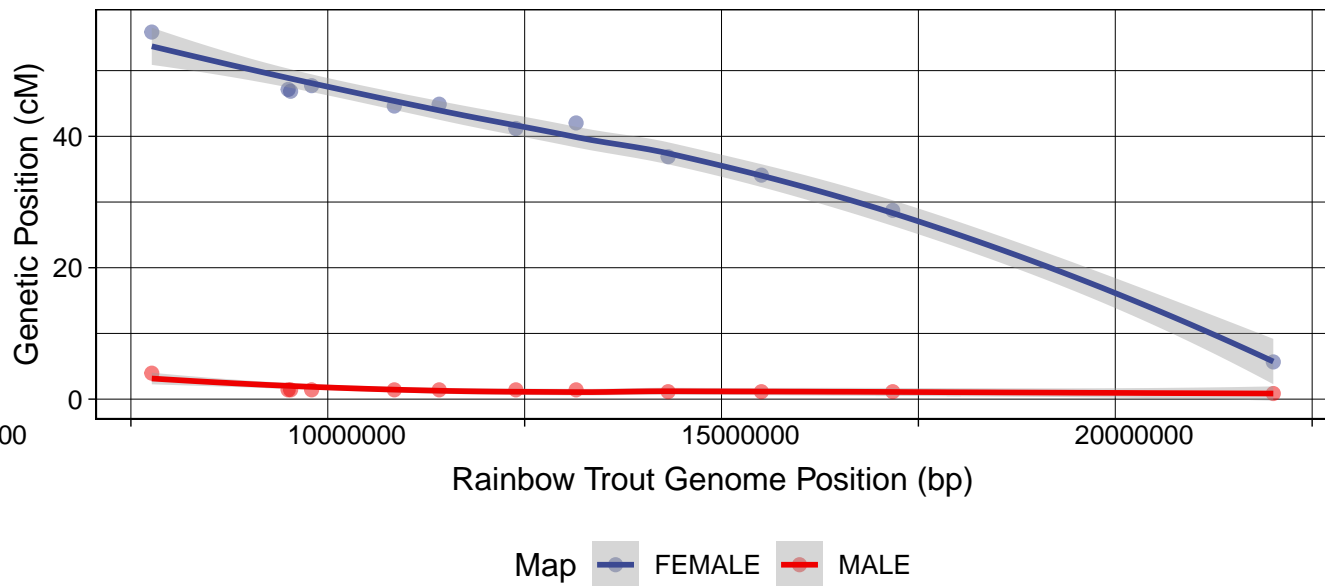
sna38 vs. omy21



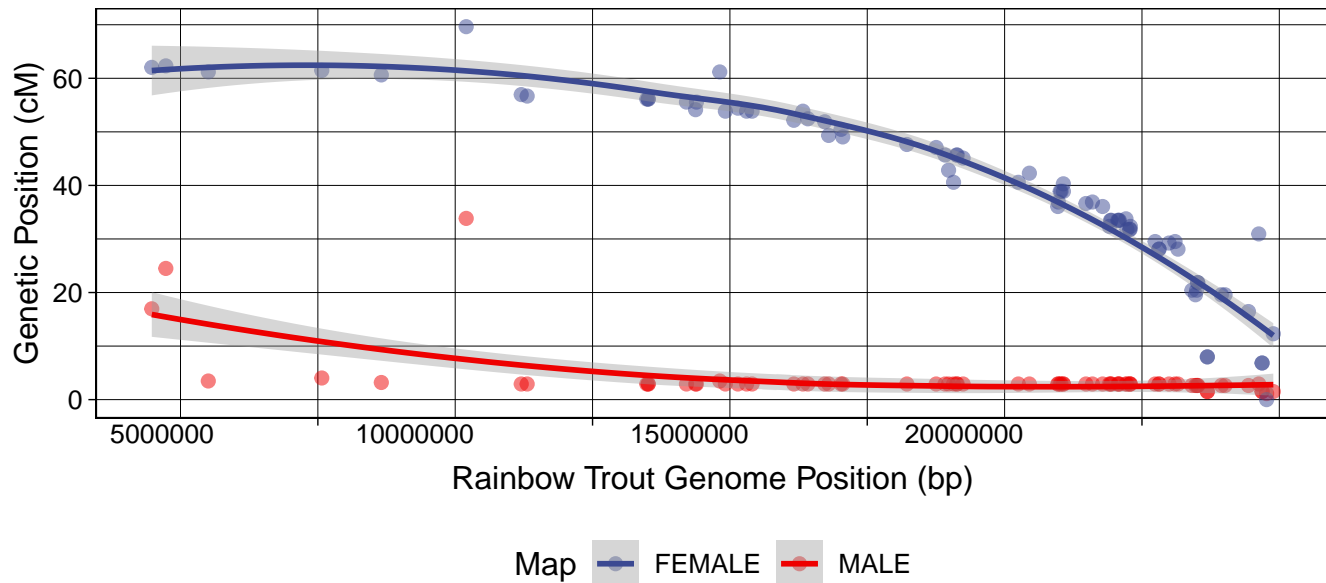
sna39 vs. omy13



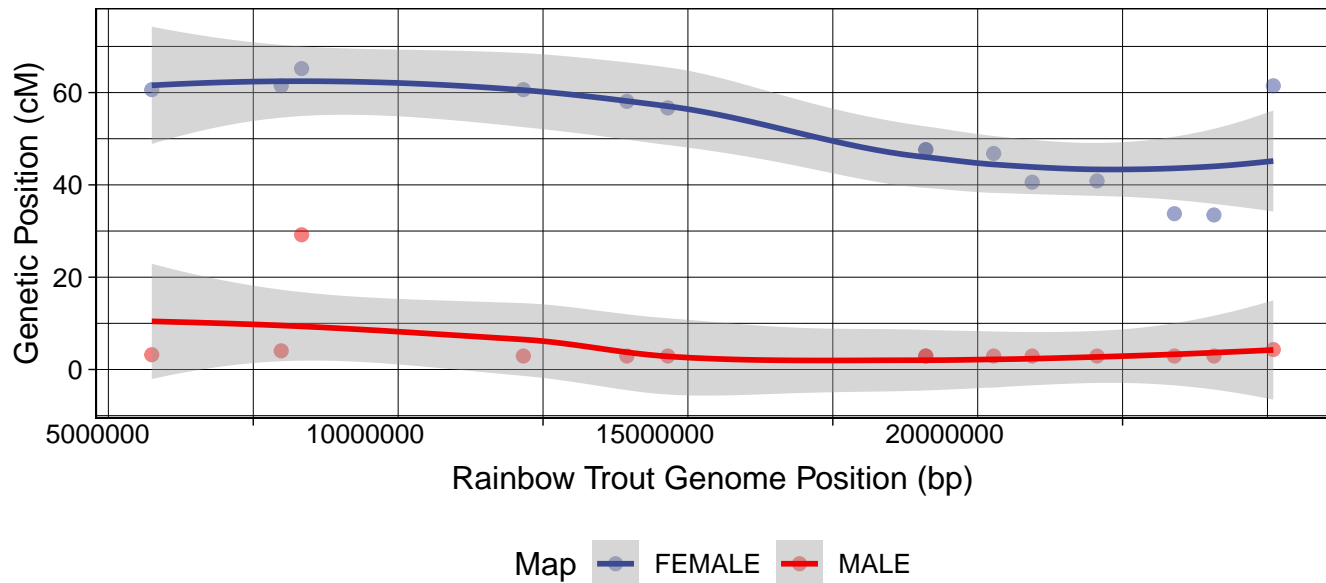
sna39 vs. omy17



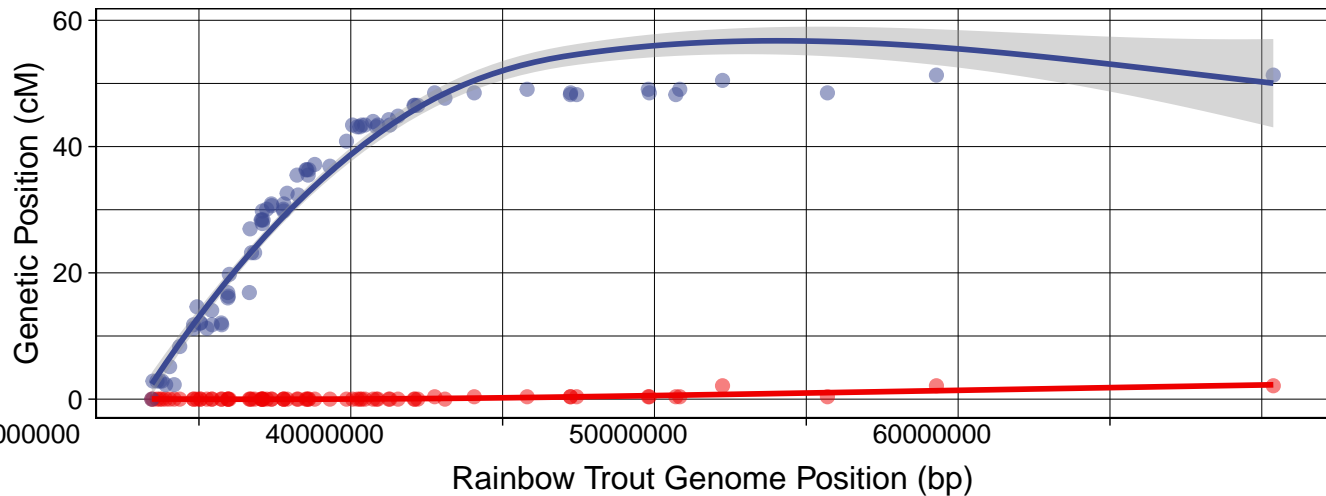
sna40 vs. omy7



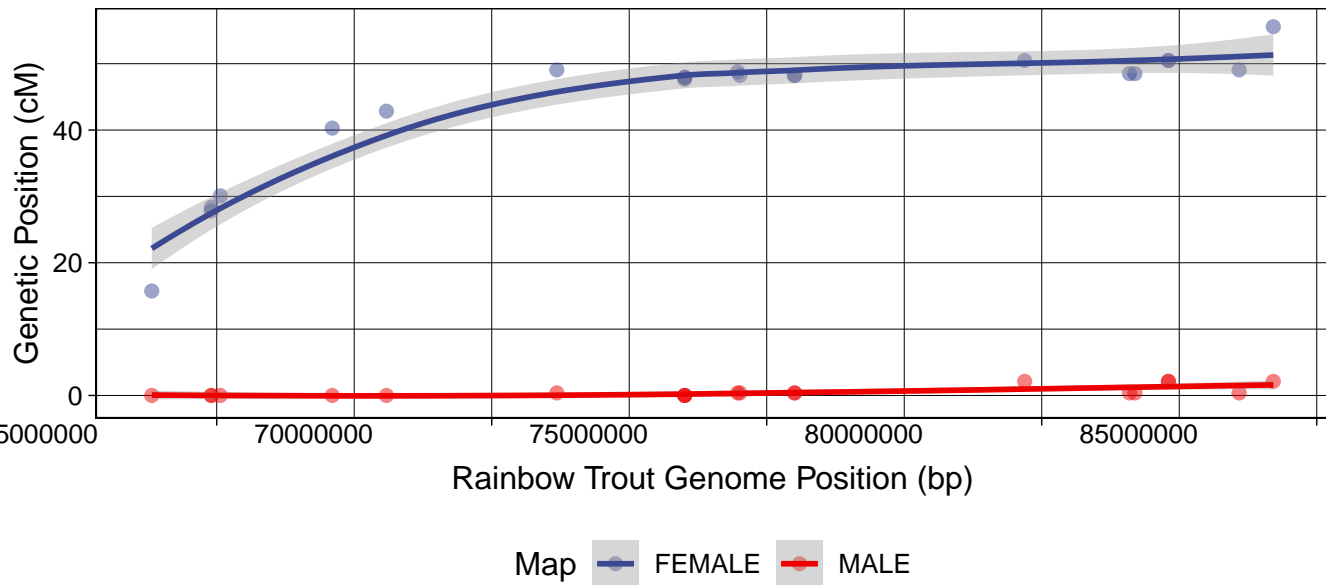
sna40 vs. omy18



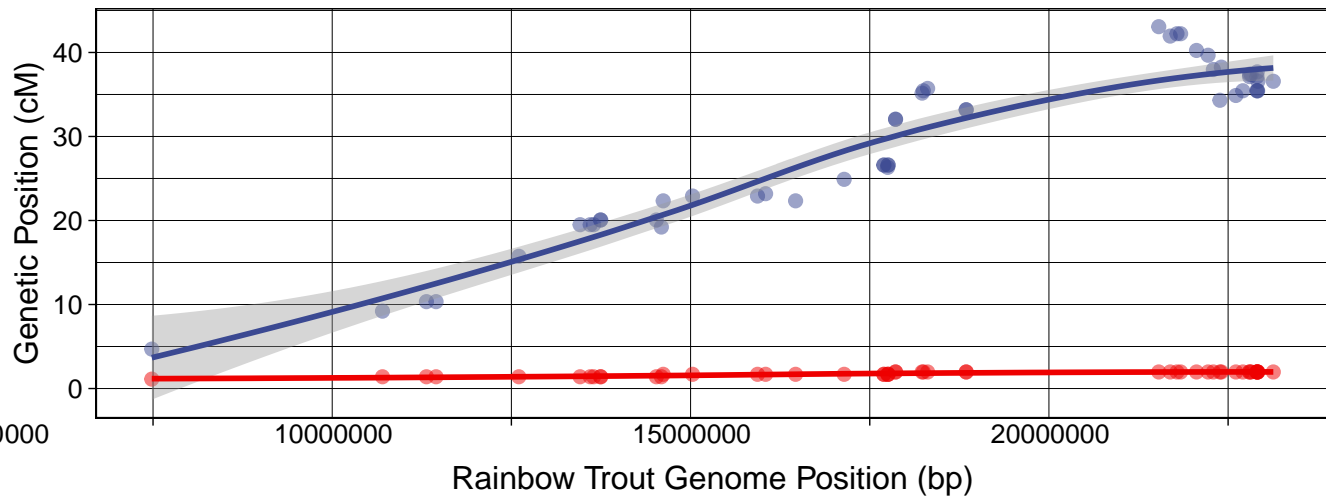
sna41 vs. omy13



sna41 vs. omy12



sna42 vs. omy19



sna42 vs. omy10

