

Figure S1. Increased oxidative-stress resistance upon *AKT1* or *KEAP1* knockdown (related to Figure 1)

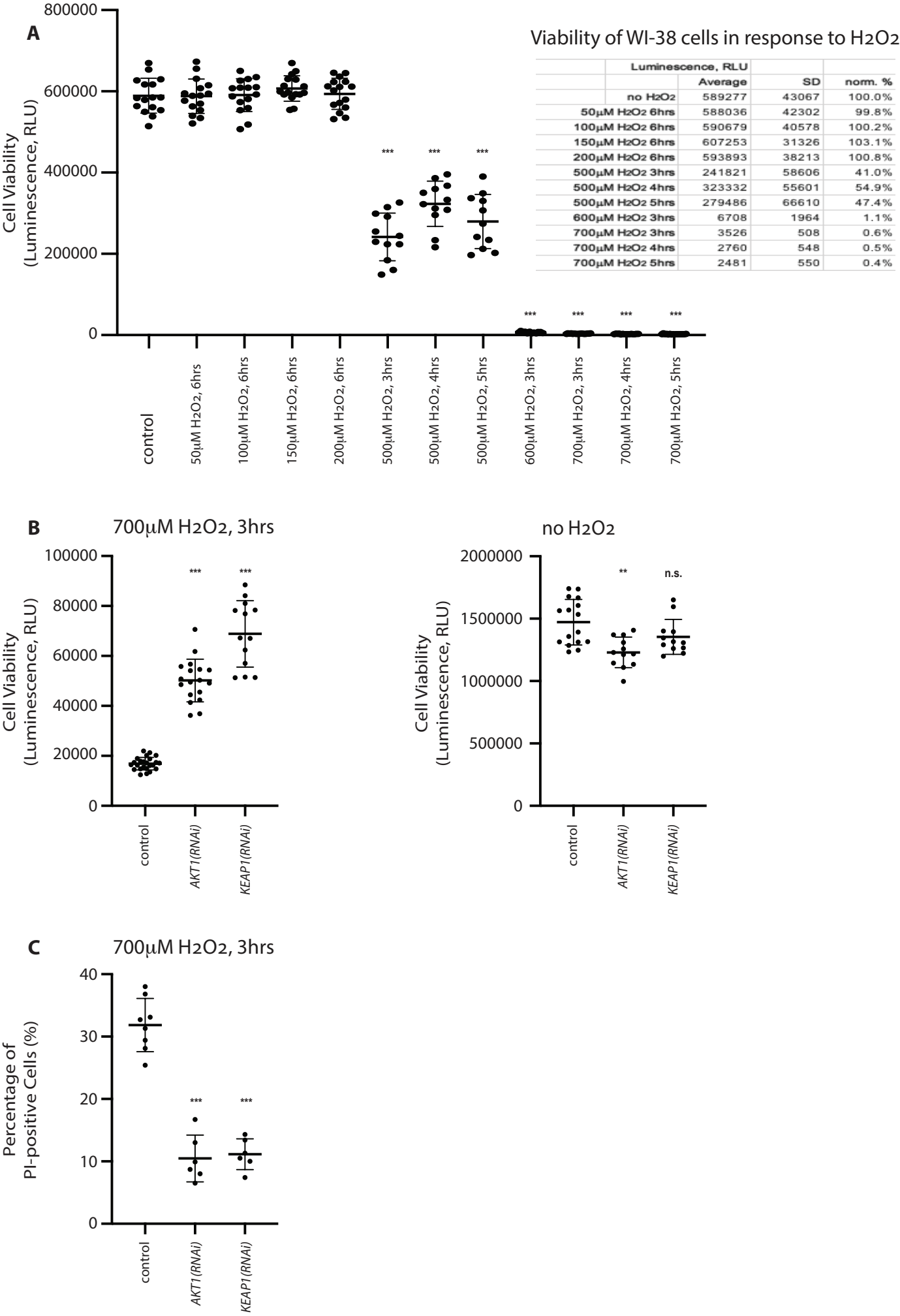


Figure S2. Z-prime scores across the screen (related to Figure 1)

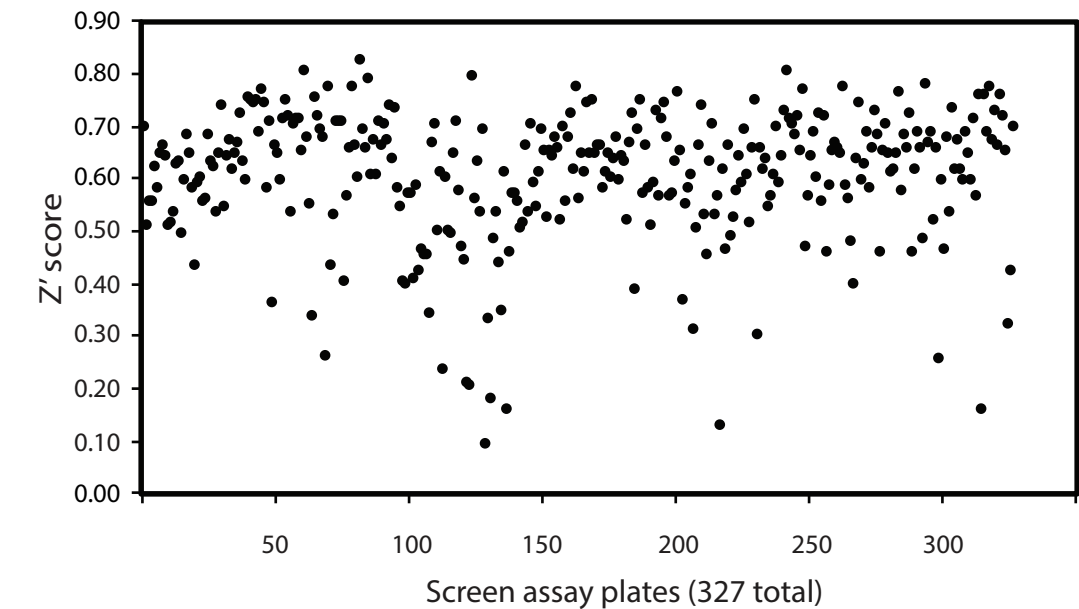


Figure S3. ROS-scavenging capacity of certain small molecules in the absence of cells (related to Figure 1)

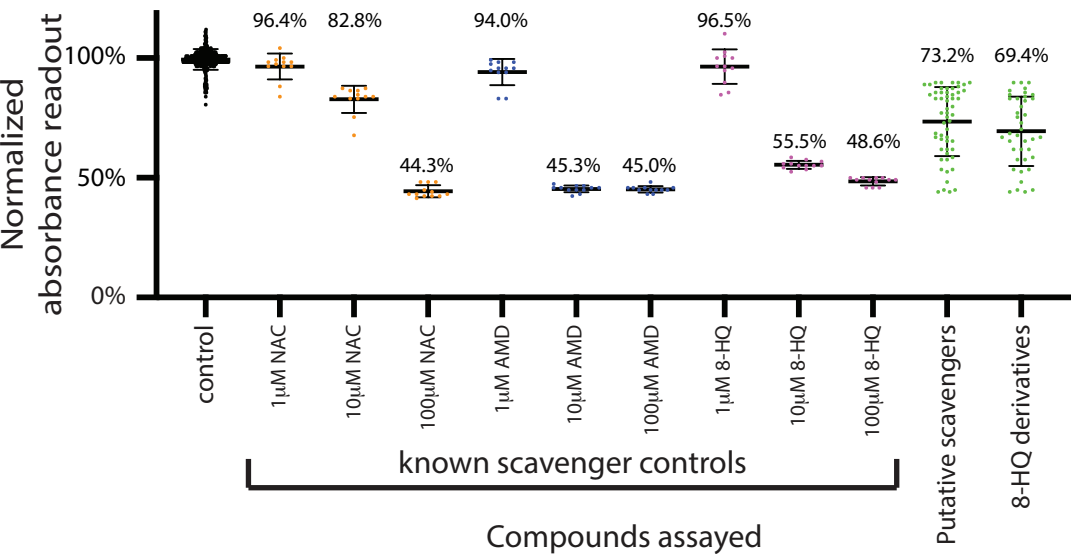


Figure S4. No H₂O₂-quenching effects by small molecules in the absence of cells (related to Figure 2)

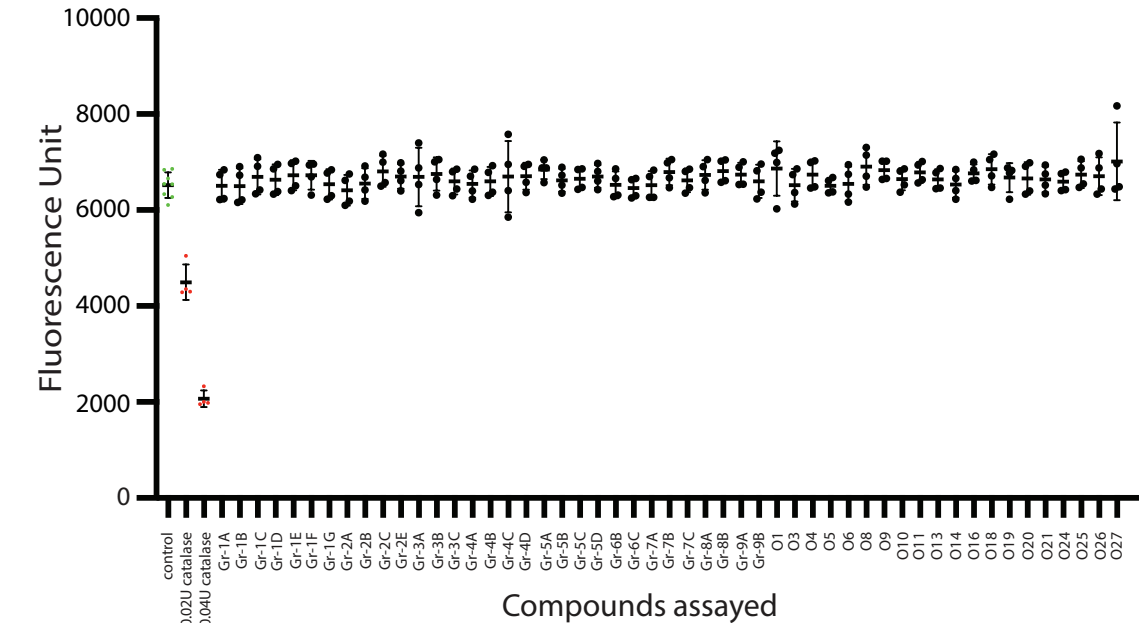
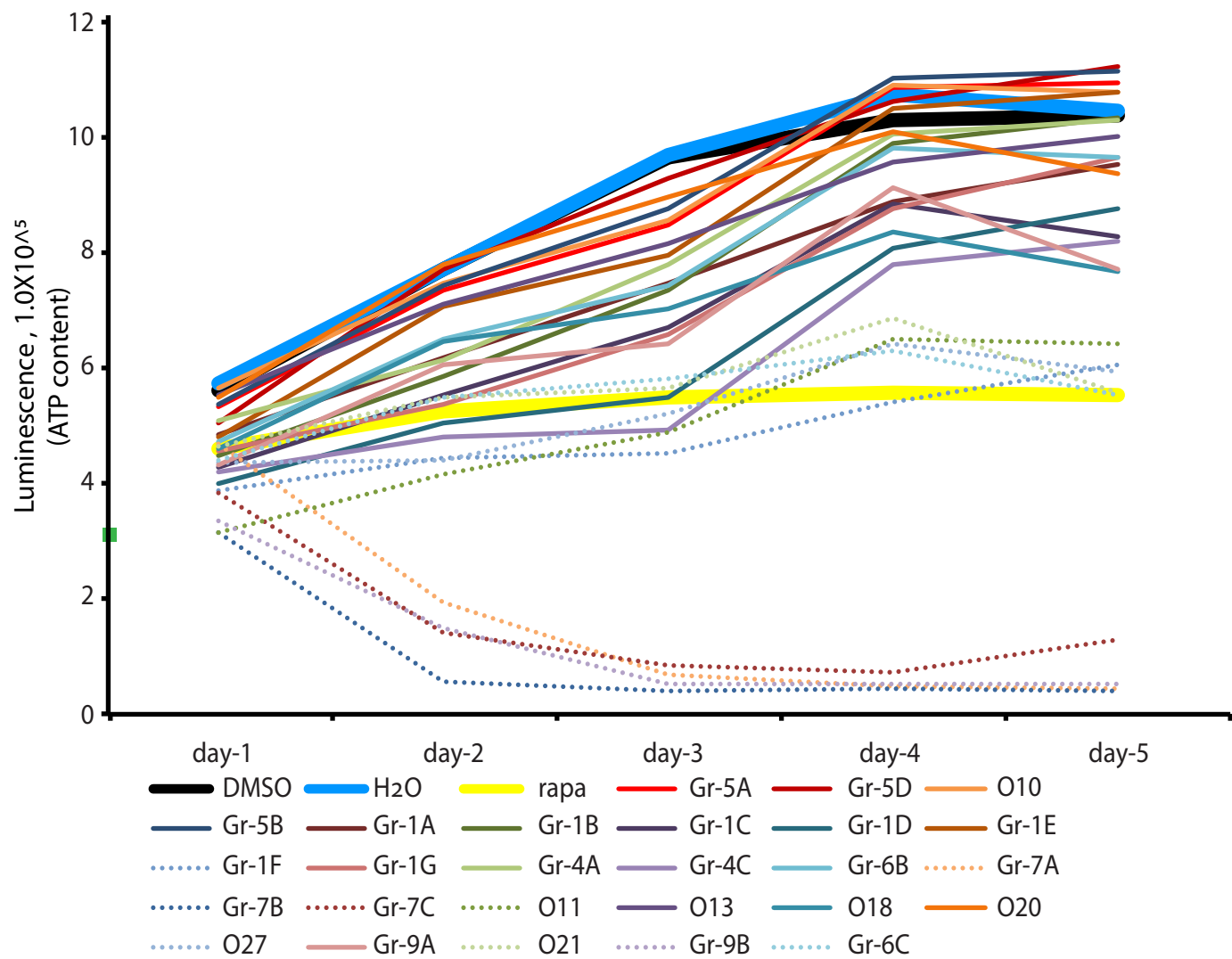


Figure S5-1. Long-term effects of small molecules on ATP levels (related to Figure 3)

A



B

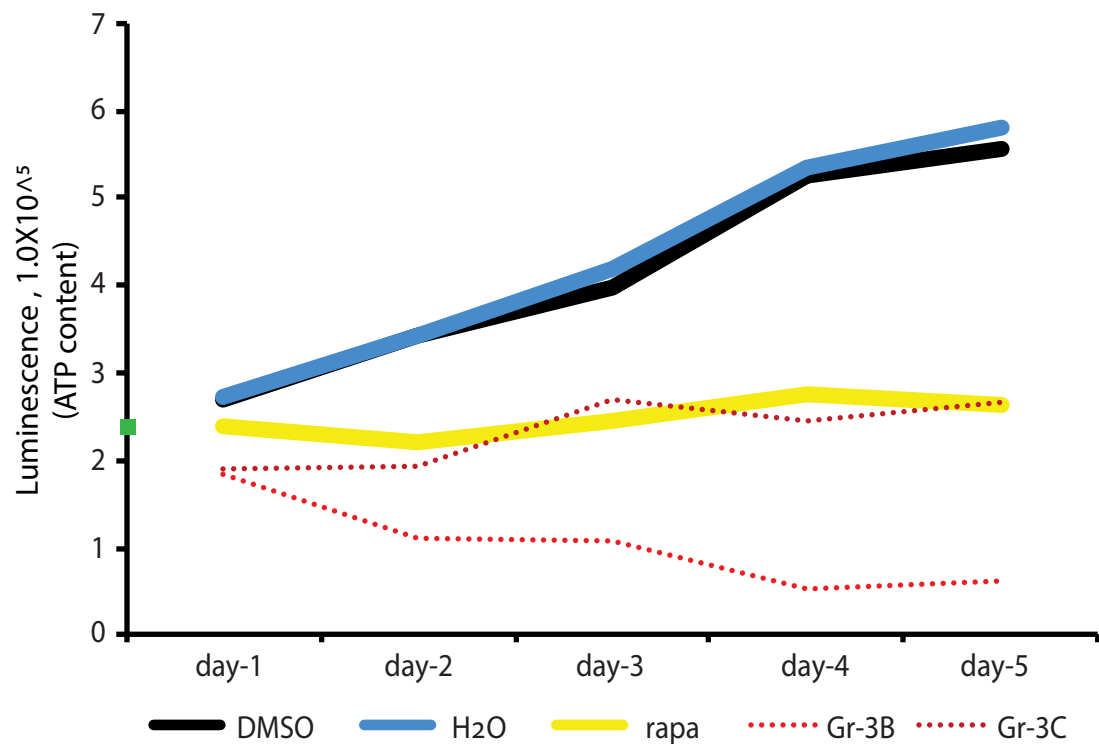


Figure S5-2. Effects of prolonged small-molecule incubation on WI-38 cell confluency (related to Figure 3)

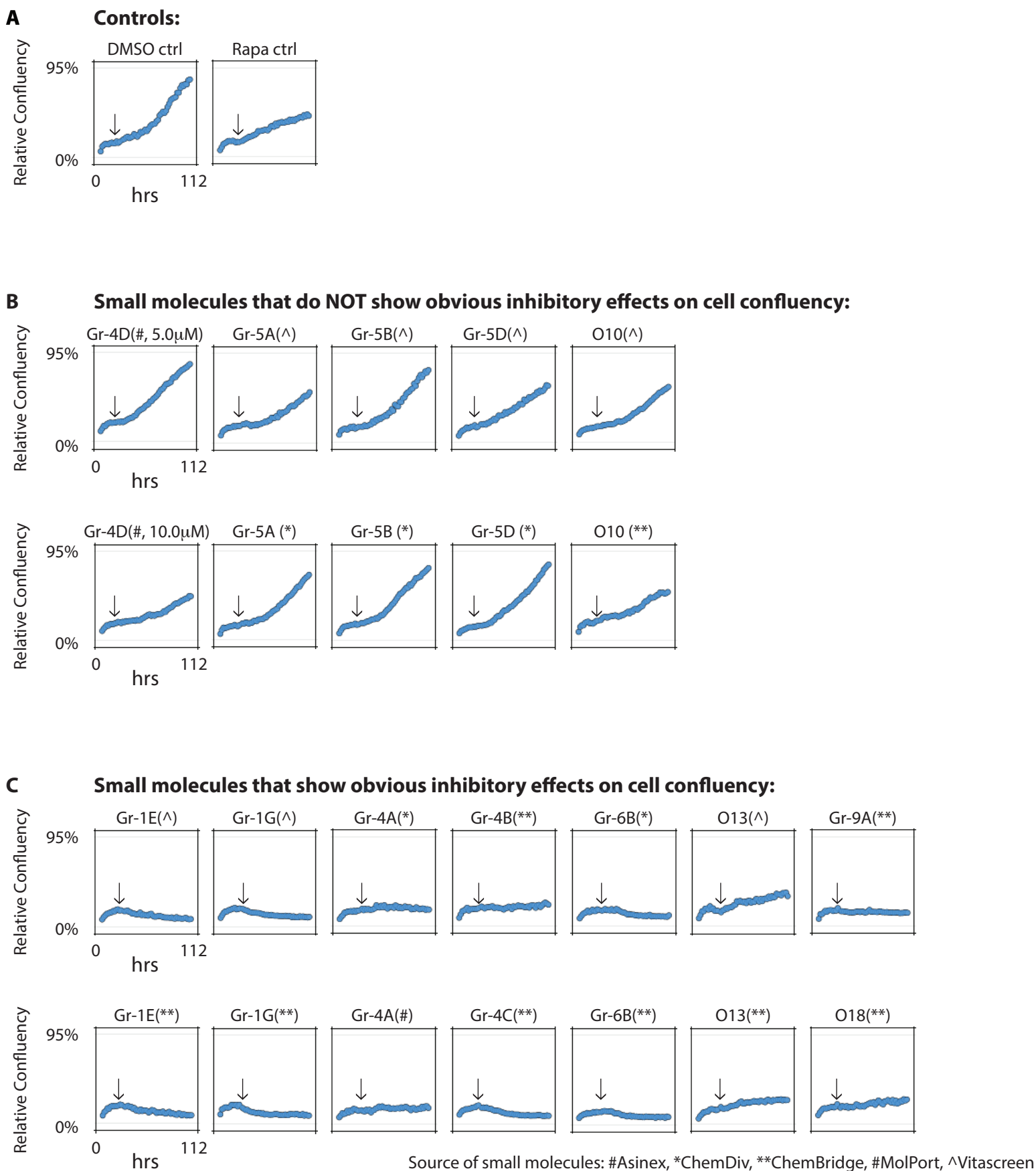
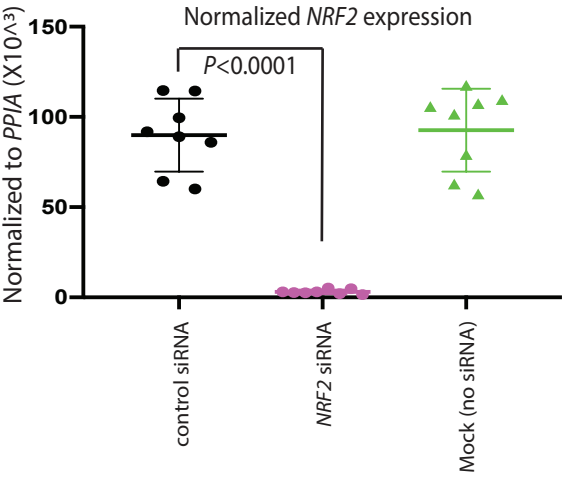
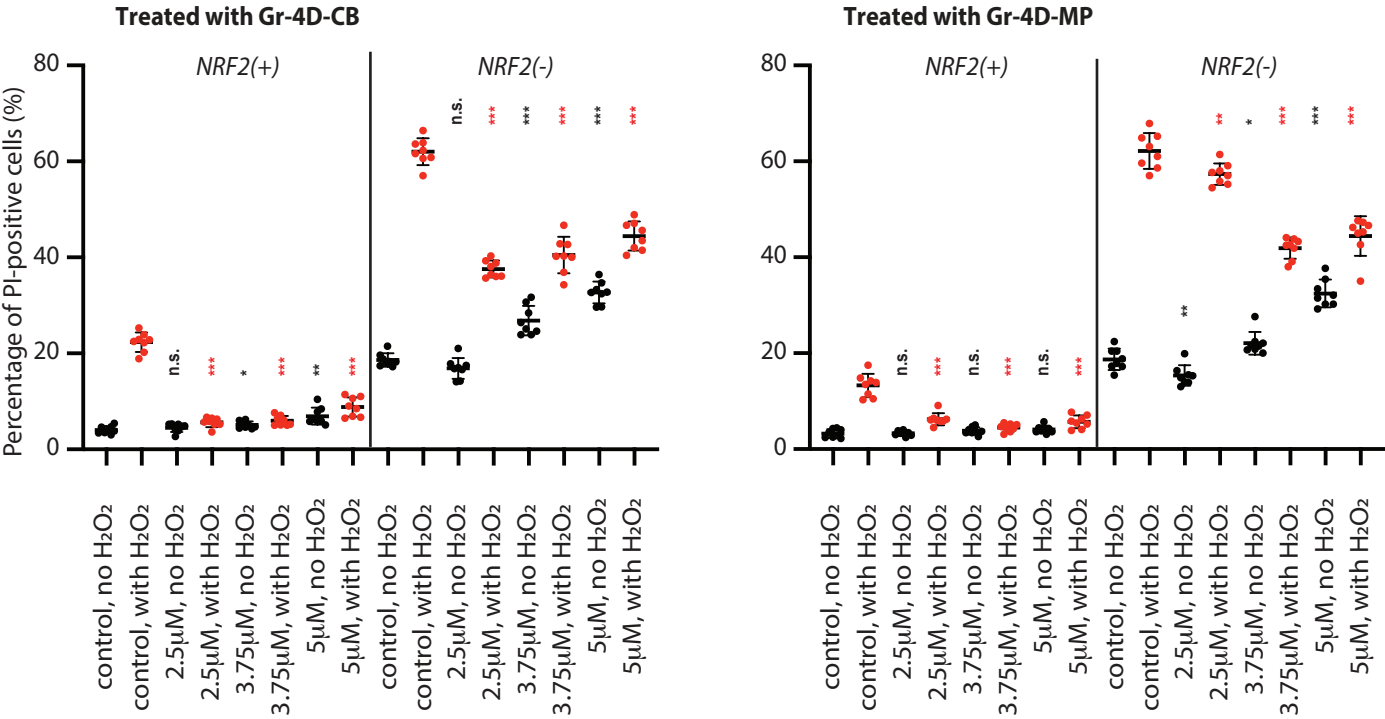


Figure S6. Increased cells viability upon H₂O₂ by small molecules (related to Figure 3)

A



B



C

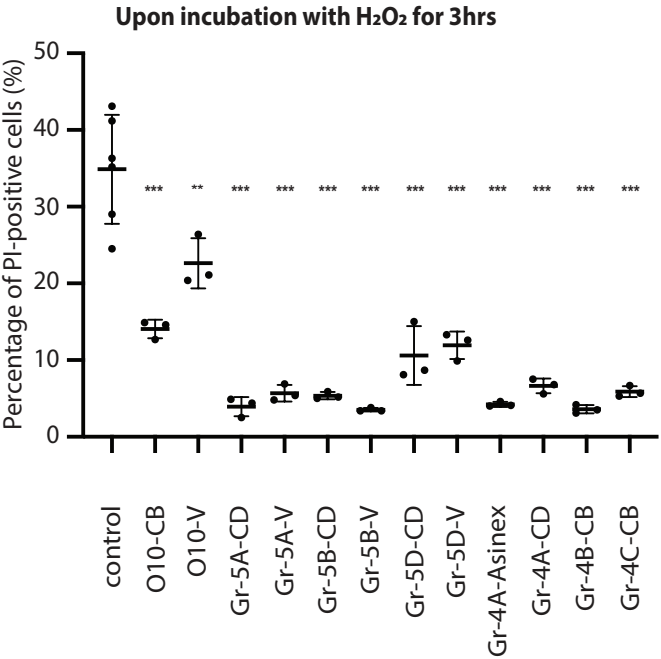


Figure S7. Effects of small molecules on gene expression of WI-38 cells (related to Figure 3)

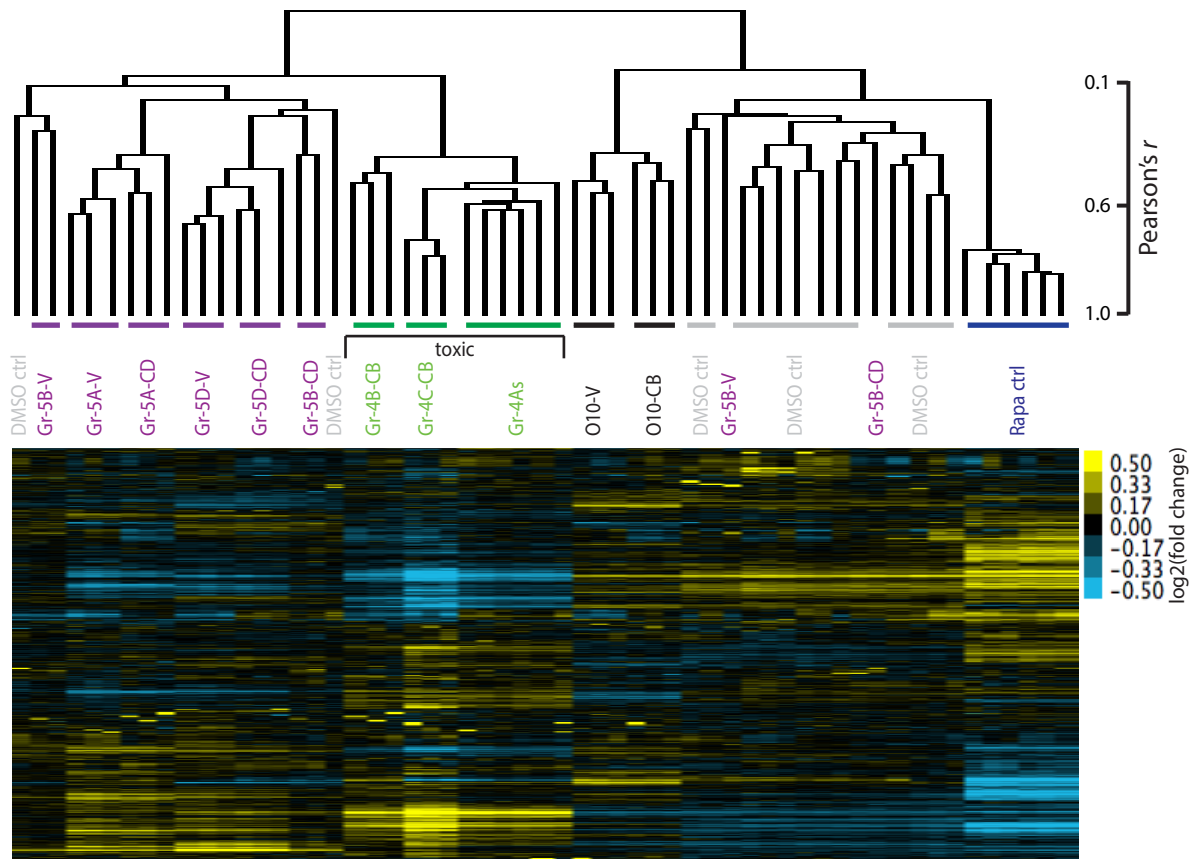


Figure S8. Inhibitory effects of certain small molecules on PARP (related to Figure 2)

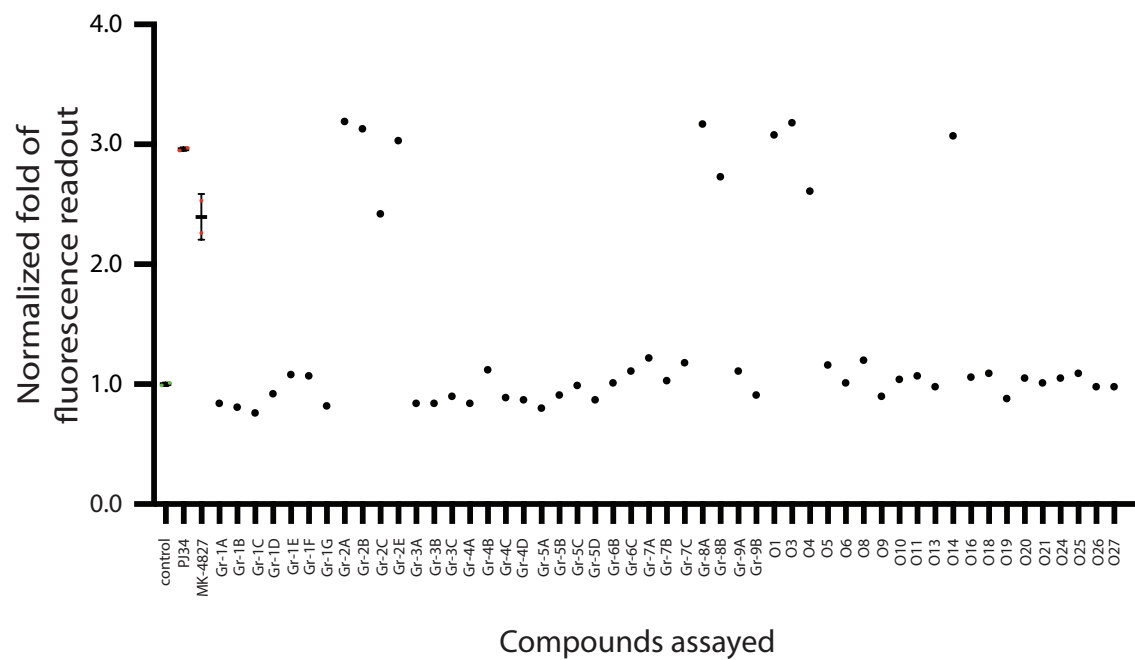


Figure S9. Protective effects of certain small molecules against poly-Q toxicity (related to Table 1)

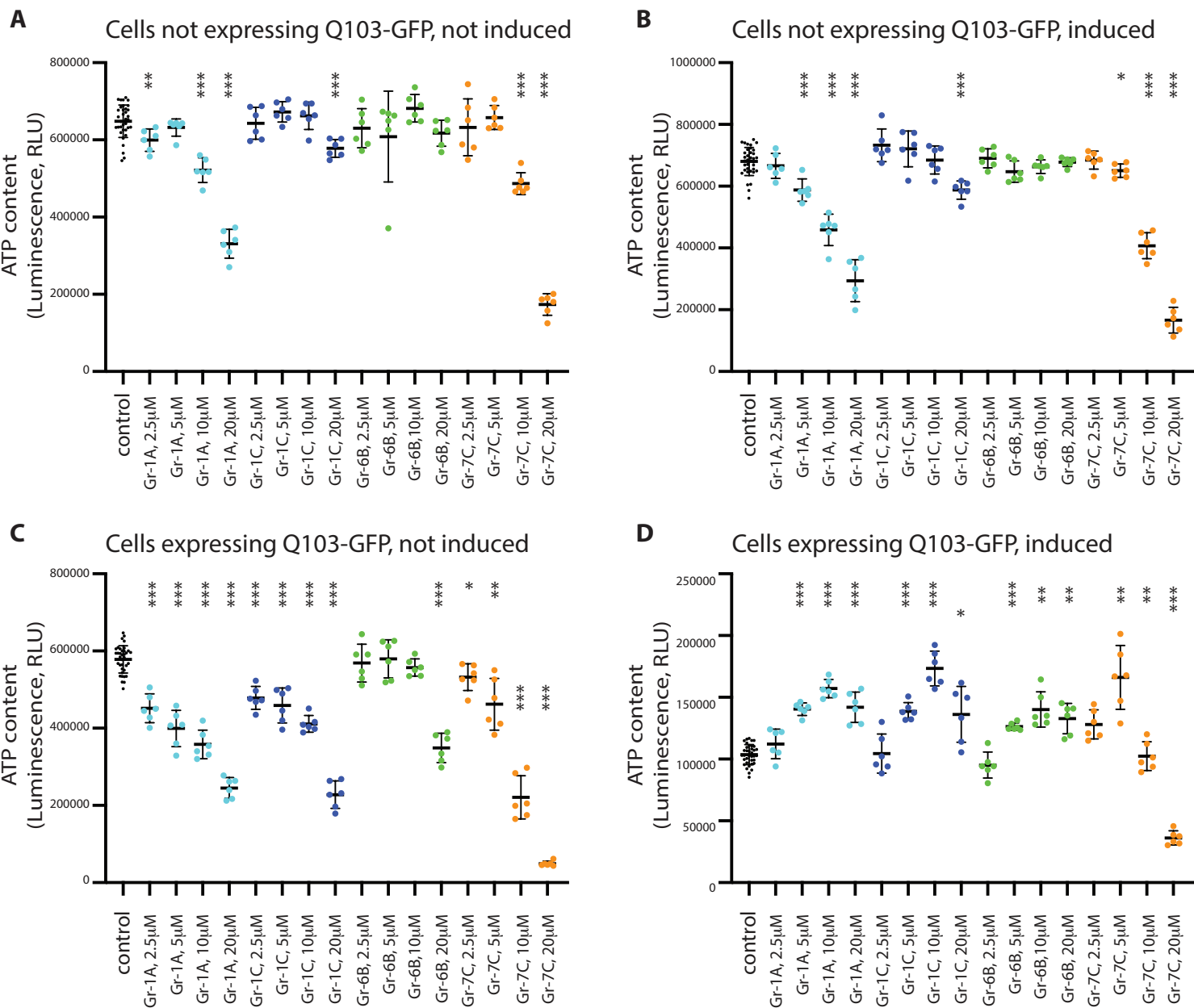


Figure S10. Effects of Gr-4D on *C. elegans* expressing several pathway reporters & on lifespan of worms treated with *sesn-1(RNAi)* (related to Figure 4)

