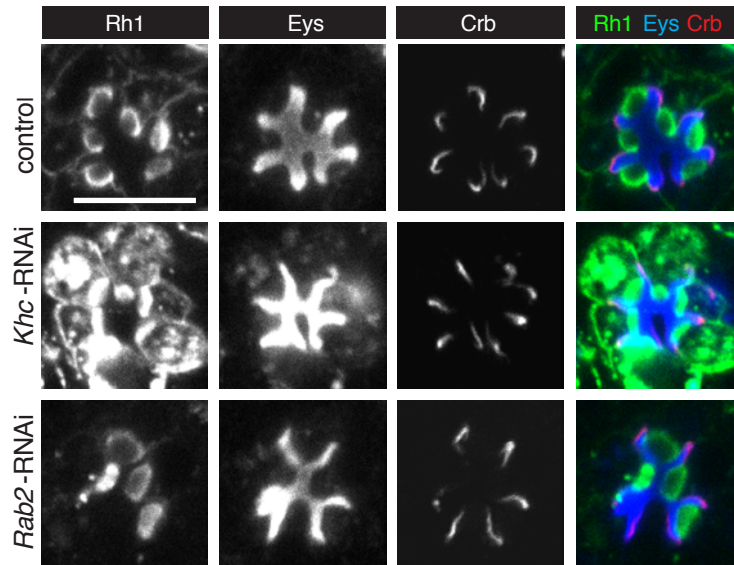


## Laffafian and Tepass, Figure S2



### Figure S2. Genes affecting Rh1 and Eys trafficking.

Flies with UAS-RNAi constructs were crossed to UAS-dicer-2; pGMR-Gal4 flies. The retinas of adult progeny were stained for Rh1, Eys, and Crb. UAS-dicer-2/+; pGMR-Gal4/+ was used as a control. **Khc** knockdown (RNAi line BDSC 25898) resulted in the accumulation of cytoplasmic Rh1 and Eys. **Rab2** knockdown (RNAi line BDSC 28701) led to a reduction in Rh1 and Eys. Missing rhabdomeres and reduced IRS size were also apparent. Scale bar, 5  $\mu$ m.